

Department of Communication Pathology

Established in 1959

Incorporating the Centre for Early Intervention in
Communication Pathology (CEICP)

ANNUAL REPORT 2008

Editors: Prof. Brenda Louw and Mr HEC Tesner

Co-Workers: Departmental Staff

Published in the 49th Year of the Department's Existence



100
1908 - 2008



UNIVERSITEIT VAN PRETORIA
UNIVERSITY OF PRETORIA
YUNIBESITHI YA PRETORIA

Faculty of Humanities

TABLE OF CONTENTS

		PAGE
1.	THE YEAR 2008 IN RETROSPECT	1
2.	DEPARTMENTAL MANAGEMENT STRUCTURE	3
3.	DEPARTMENTAL STAFF	5
	• Achievements by staff members	8
	• Staff serving membership: Committees of the University of Pretoria	8
	• Staff serving membership: Committees, associations, boards, councils and task groups	9
4.	STUDENTS DEMOGRAPHICS AND ACHIEVEMENTS	9
	• Undergraduate students	9
	• Advanced Diploma in Hearing Aid Acoustics	10
	• M. Communication Pathology students	10
	• Doctoral students	10
	• Achievements by students	10
5.	TEACHING AND LEARNING	10
	• Overview	10
	• Clinical contexts utilized for student training	11
	• Objectives for 2009	11
6.	RESEARCH	12
	• Research articles published by staff members in accredited journals	12
	• Non-accredited scientific publications by staff members	13
	• Chapters by staff members in books	13
	• International conference contributions by staff members	13
	• National conference contributions by staff members	14
	• Other scientific presentations	16
	• Research reports by final year students	16
	• Postgraduate research: M. Communication Pathology dissertations	17
	• Objectives for 2009	17
7.	COMMUNITY ENGAGEMENT	17
	• Continuous professional development seminars presented by the Department of Communication Pathology	17
	• Community engagement activities undertaken by staff members	17
	• Objectives for 2009	18
8.	SPECIALIST CENTRE	19
	• PPS-CHRIB	19
9.	PRETORIA COCHLEAR IMPLANT PROGRAMME (PCIP)	20
	• Team members of the PCIP	20
	• Patient statistics	20
	• Research outputs	20
	• National and international contacts	21
	• Objectives for 2009	21

	PAGE
10. INTERNATIONAL VISITS, VISITORS AND COLLABORATION	21
• International visitors	21
• International visits by staff members	22
• International collaboration	23
11. ACKNOWLEDGEMENTS	24

1 THE YEAR 2008 IN RETROSPECT

The highlights of 2008 can be summarized as being diverse and exiting with new developments on various levels in the department which contributed to the department's growth and expertise in different fields.

In preparing for the new curriculum to be introduced in 2009, namely to offer future single profession training in either Speech-Language Pathology or Audiology, the 2008 focus was on the scholarship of teaching and learning. The support of and collaboration with the Department Education Innovation is gratefully acknowledged (refer to Section 5).

The department was proud to launch its Tinnitus Therapy Unit, the first to be introduced at an academic training facility in South Africa. It offers a comprehensive assessment and intervention programme for individuals suffering from tinnitus.

A play area was created in the foyer and therapy rooms were refurbished to make the building more children friendly. This was made possible by a community engagement project of students in the School for Built Environment of the Faculty Engineering, Built Environment and Information Technology.

The year 2008 marked the centenary celebrations of the University of Pretoria and the department contributed to this special occasion by presenting a centenary conference titled *Fast Forward over a Century* covering the latest developments and trends in Audiology and Speech-language therapy.

Dr J Hall, University of Florida, USA, and Prof. B Vinck, University of Ghent, Belgium, two world renowned audiologists, were appointed as extraordinary professors in the department in 2008. These appointments led to new joint research projects and co-supervision of post graduate students. Dr Hall also presented a two day workshop which was a resounding success. A number of international visitors were received in the department and various staff members visited institutions around the world (refer to Section 9, Table 9.1)

Research output by the staff during 2008 (refer to Section 6, Tables 6.1 – 6.6) confirms that the department remains committed to its vision by training Speech-Language Pathologists and Audiologists of excellence, by excellence in research activities; by meeting the needs of the South African population; by transformation; and finally by developing and maintaining multi-level partnerships.

The 2008 annual report provides an overview of the department's teaching and learning, research and community engagement activities and attests to the dedication and commitment of both staff and students. These activities benefited individuals with communication disorders, the university as an institution and the community at large.

PROFESSOR BRENDA LOUW

HEAD: DEPARTMENT OF COMMUNICATION PATHOLOGY

2. DEPARTMENTAL MANAGEMENT STRUCTURE

The participatory management structure of the department is illustrated in Figure 2.1. All members of staff share responsibility for the effective functioning of the department as each has a designated function within the structure.

Faculty of Humanities
School for Professional Social Sciences
Department of Communication Pathology

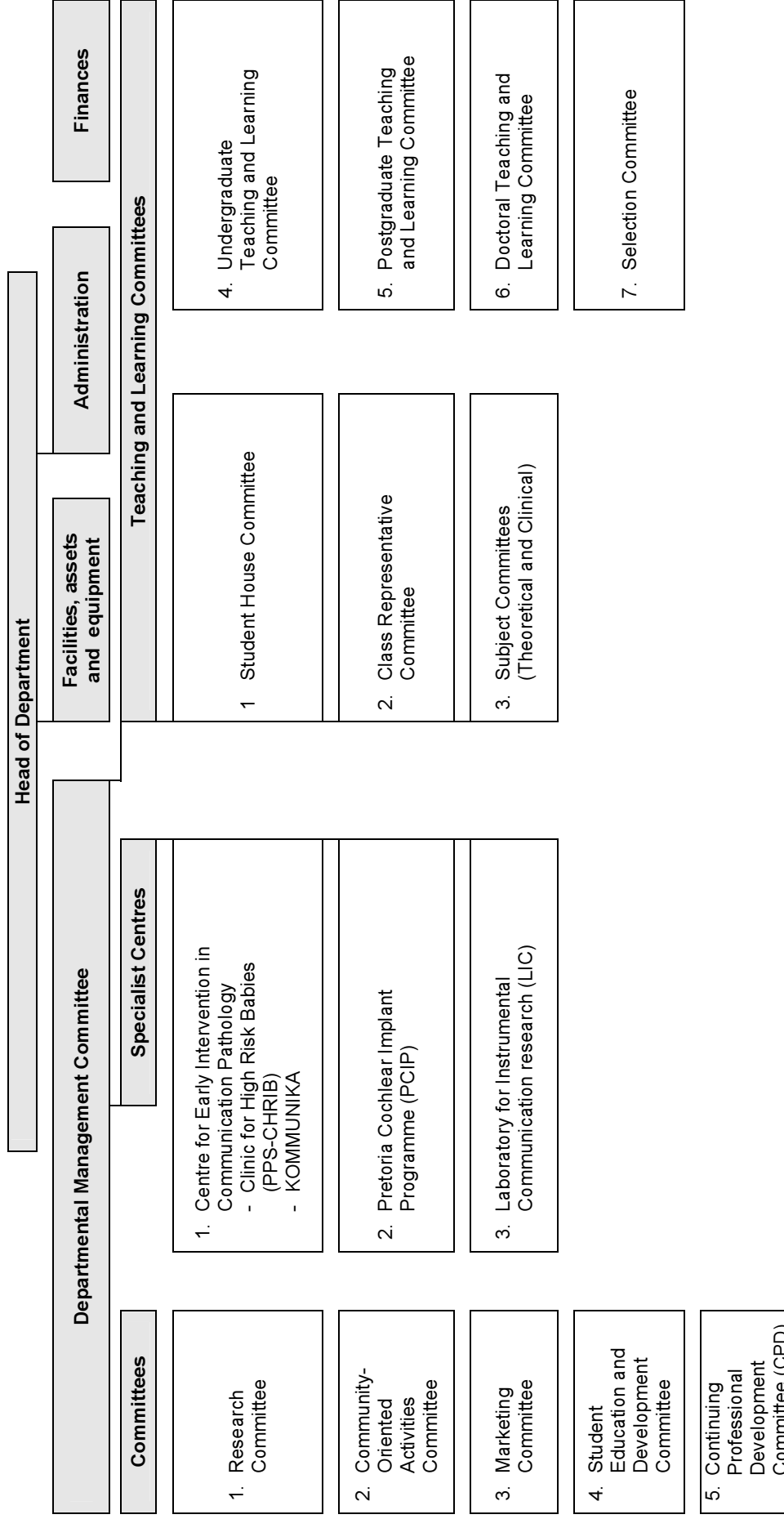


Figure 2.1: Departmental management structure

3. DEPARTMENTAL STAFF

The departmental staff complement is illustrated in Figure 3.1. The year 2008 was typified by change and a number of new staff members joined the department in 2008. Dr S Seoke who completed her D Aud at the University of Florida, USA, and Mrs B Heinze (M ECI) who left private practice, both accepted appointments as lecturers in Audiology. Ms C van der Westhuizen returned from the UK to be appointed as departmental tutor.

Mrs C Vermaak, Mrs L Cilliers, and Ms M Theunissen were appointed as temporary part-time staff members and their teaching inputs added an important dimension to training as they are all practice-based and their respective contributions were valued. Prof. IC Uys, Mr A Lötter, Mr PA Gouws, Dr CJB Smit and Dr G Goldblum continued their session appointments during 2008 to the benefit of the students and of the department itself.

Two lecturers namely Mrs A Redelinghuys, an expert in child language, language learning disorders, and autism spectrum disorders resigned in June 2008, as well as Mrs A Stipinovich, an expert in dysphagia, adult neurological disorders and aphasia, who resigned in December 2008, both in favour of fulltime motherhood/parenting. They distinguished themselves as popular lecturers and research supervisors of undergraduate and postgraduate students. They left a valuable legacy in their respective fields and their contributions to the department are highly appreciated.

Sadly, Mr Norman Machacha, clerical assistant and messenger, passed away on 12 December 2008. He is survived by his two sons aged 7 and 9. Mr. Machacha joined the department in 2002 and took pride in his work. His work ethics and commitment were appreciated and he played a vital role in the day to day functioning of the department. Mr Machacha will be sorely missed.

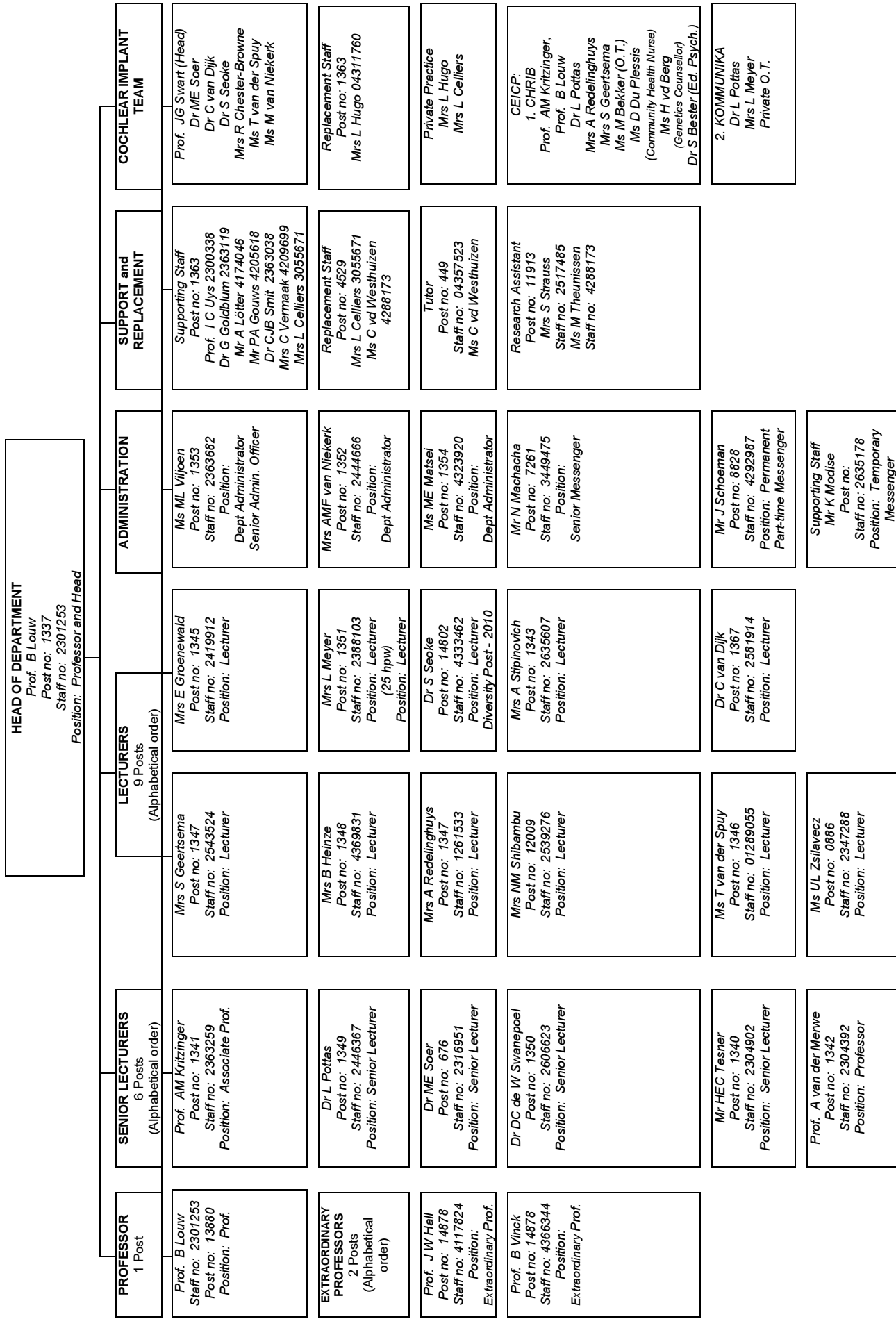


FIGURE 3.1: DEPARTMENT OF COMMUNICATION PATHOLOGY: STAFF COMPLEMENT 2008

Departmental staff



Front: Prof. Alta Kritzing, Mr Herman Tesner, Prof. Brenda Louw, Prof. Anita van der Merwe, Mrs Ursula Zsilavec, Dr Maggi Soer

Middle: Mrs Mary Shibambu, Mrs Ronel Chester-Browne, Mrs Barbara Heinze, Dr Sinah Seoke, Ms Ria Viljoen, Mrs Lynette Meyer, Mr Kosie Schoeman, Mrs Maria Matome

Back: Ms Daisy Matsei, Mrs Alex Stipinovich, Mrs Salomé Geertsema, Dr Catherine van Dijk, Ms Talita van der Spuy, Dr De Wet Swanepoel, Mr Norman Machacha, Dr Lidia Pottas

Table 3.1: Major achievements by staff members

Staff member	Achievements
Prof. Brenda Louw	<ul style="list-style-type: none"> ▪ Invited by The Smile Train to serve on an <i>ad hoc</i> Committee on Speech Services for Cleft Palate in Underserved Regions of the World. New York, 12-14 June 2008 ▪ Invited participant in Seattle-Kumasi Advocacy for Team Care in Africa. Kumasi, Ghana, 3-10 May 2008
Dr Sinah Seoke	<ul style="list-style-type: none"> ▪ Awarded a Research Development Grant for 2009 by the University of Pretoria
Dr De Wet Swanepoel	<ul style="list-style-type: none"> ▪ Invited to present the Marion Downs Paediatric Audiology Lecture at the Annual Convention of the American Academy of Audiology 2008. Charlotte, North Carolina, USA, 2 – 5 April. ▪ Keynote presentation: Early intervention for hearing loss in South Africa: Cost-benefits and current status. Ndiyeveva Audiology Conference. Somerset-West, South Africa. 10 -12 July 2008. ▪ Keynote presentation: Infant hearing loss in developing countries – silent health priority. 44th South African ENT and Audiology Congress. Durban International Convention Centre, 2 – 5 November 2008 ▪ Received the South African Association of Audiologists' 2008 award for <i>Best contribution to Audiology in the Field of Academics and Research</i>. 44th South African ENT and Audiology Congress, Durban, 2-5 November 2008
Dr Catherine van Dijk Mrs Ronel Chester-Browne	<ul style="list-style-type: none"> ▪ Invited and sponsored to attend international training course on cochlear implants. University of Leyden, Leyden, Netherlands, 11-13 March 2008
Mrs Ursula Zsilavec	<ul style="list-style-type: none"> ▪ Invited to attend the Mid-Atlantic Workshop 2008: Treating Children and Adolescents who stutter. Children's Hospital of Philadelphia, Philadelphia, 18-22 June 2008

Table 3.2: Staff serving membership: Committees of the University of Pretoria

Staff member	Committee	Portfolio
Prof. AM Kritzinger	<ul style="list-style-type: none"> • Faculty of Humanities: Community Engagement Committee 	<ul style="list-style-type: none"> • Chair
Prof. B Louw	<ul style="list-style-type: none"> • Faculty of Humanities: School for Applied Social Sciences Committee • Faculty of Humanities: Research Proposal and Ethics Committee • Senate Committee for Research Ethics and Integrity • Senate Committee 	<ul style="list-style-type: none"> • Member • Chair • Member • Member
Mrs M Shibambu	<ul style="list-style-type: none"> • UPWO 	<ul style="list-style-type: none"> • Faculty Representative
Dr DCD Swanepoel	<ul style="list-style-type: none"> • Education Innovation Awards Panel 	<ul style="list-style-type: none"> • Faculty Representative
Prof. A van der Merwe	<ul style="list-style-type: none"> • Faculty of Humanities: Research Committee • Faculty of Humanities: School of Social Sciences Research Committee • Faculty of Humanities: Research Information System 	<ul style="list-style-type: none"> • Member • Co-ordinator • Faculty co-ordinator

Table 3.3: Staff serving membership: Committees, associations, boards, councils, task groups

Staff Member	Body/ies	Appointed position
Prof. A Kritzinger	South African Speech-Language and Hearing Association (SASLHA)	Member: Ethics and Standards Committee
	South African Neonate, Infant and Toddler Support Association (SANITSA)	Member: Speech-Language Therapy Board
Prof. B Louw	International Confederation of Cleft, Palate and Related Craniofacial Anomalies	Member: Congress Organizing Committee, Fortaleza, Brazil
	South African Cleft Lip and Palate Society (SACLPS)	President
	Pan African Association for Cleft Lip and Palate (PACLIP)	Vice-President
	HPCSA Professional Board for Speech Language and Hearing Professions	Co-opted member: Education Sub-committee
Dr L Pottas	South African Speech-Language and Hearing Association (SASLHA)	Member: Ethics and Standards Committee
Dr M E Soer	HPCSA Professional Board for Speech, Language and Hearing Professions	Member: Standards Generating Body for Hearing Aid Acousticians
	South African Buro of Standards	Member: Working Group 43, Acoustics
Dr DCD Swanepoel	World Health Organization: International Classification of Functioning and Health Steering Committee	Representative for African region
	International Advisory board for the XXIXth International Congress of Audiology	Member: of Advisory Board
Mrs U Zsilavec	HPCSA Professional Board for Speech Language and Hearing Professions	Member Education Sub-committee Member Inquiry of conduct Sub-committee

4. STUDENTS: DEMOGRAPHICS AND ACHIEVEMENTS

Table 4.1: Undergraduate student complement of 2008

		YEAR OF STUDY				GRAND TOTALS
		First	Second	Third**	Final***	
POPULATION GROUP	Male	0	0	2	0	2
	Female	46	38	44	28	156
	TOTAL	46	38	46	28	158
	Black	3	3	6	2	14
	Coloured	0	1	0	1	2
	Indian	1	2	1	1	5
	White	42	32	39	24	137
	Disabled	0	0	0	0	0

**OF THE 46 THIRD YEAR STUDENTS REFLECTED IN THE TABLE ABOVE, 8 WERE REGISTERED FOR B. COMMUNICATION PATHOLOGY (AUDIOLOGY), AND 4 FOR B. COMMUNICATION PATHOLOGY (SPEECH-LANGUAGE PATHOLOGY). THE REMAINING 34 WERE REGISTERED FOR BOTH.

*** OF THE 28 FOURTH YEAR STUDENTS REFLECTED IN THE TABLE ABOVE, 7 WERE REGISTERED FOR B. COMMUNICATION PATHOLOGY (AUDIOLOGY), AND 2 FOR B. COMMUNICATION PATHOLOGY (SPEECH-LANGUAGE PATHOLOGY). THE REMAINING 19 WERE REGISTERED FOR BOTH.

Table 4.2: Students registered for the Advanced Diploma in Hearing Aid Acoustics in 2008

		YEAR OF STUDY		GRAND TOTALS
		First	Second	
Population group	Male	3	4	7
	Female	6	8	14
	TOTAL	9	12	21
	Black	1	1	2
	Coloured	0	1	1
	Indian	0	0	0
	White	8	10	18
	Disabled	0	0	0

Table 4.3: Master's students registered in 2008

Male	Female	TOTAL	Black	Coloured	Indian	White	Disabled
2	38	40	3	1	4	32	0

Table 4.4: Doctoral students registered in 2008

Male	Female	TOTAL	Black	Coloured	Indian	White	Disabled
0	6	6	0	0	3	3	0

Table 4.5: Achievements by students in 2008

Name	Year of study	Achievement/s
Karien Fourie	Final year undergraduate	Signal Trust UK: Travel bursary for a 2 week visit to Royal United Hospital in Bath, UK
Carina Grové	Final year undergraduate	Vice Head Student of Madelief ladies' residence in 2008 and elected as Head Student for 2009
Lelanie de Kock	Final year undergraduate	Elected as member of the Student Representative Council (SRC) for 2009. Portfolio: Marketing and external projects.
Yolandé van der Westhuizen	Master's degree student	Chair: Student Representative Council, 2008
Marianne Theunissen	Master's degree student	Holland Scholarship to attend the International Congress of Audiology. Hong Kong, 12 - 15 June 2008.

5. TEACHING AND LEARNING

5.1 Overview

- The new proposed curriculum was approved by Senate and will be implemented in 2009.
- The staff attended a ClickUP course in the beginning of the year, with the result that more modules were taught using the e-learning approach.
- A series of eight assessment workshops which were presented in the department by consultants of the Department Education Innovation were attended by lecturers.

Table 5.1: Clinical contexts utilized for student training

Clinical training sites	Corresponding module/s
1. Tertiary hospitals: Steve Biko Hospital (Pretoria Academic), Universitas Hospital, 1 Military Hospital, George Mukari Hospital, Chris Hani Baragwanath Hospital	KMP 381 ODL 482
2. Secondary level hospitals Kalafong Hospital, Ermelo Hospital, Klerksdorp Hospital, Clairwood Hospital, Leratong Hospital, King Edward Hospital, Livingstone Hospital, Witbank Hospital, Rob Ferreira Hospital	KMP 283, 381, 482
3. Private hospitals Femina Hospital, Little Company of Mary Hospital, Muelmed Hospital, Riverfield Lodge, Kloof Hospital	KMP 381, 483 ODL 382 SPP 482
4. District hospitals Jubilee Hospital, Lethabo Hospital	KMP 381, 483
5. Primary health care clinics Gateway Clinic, Temba Clinic	KMP 483
6. Specialized clinics/centres Facial Cleft Deformities Clinic, Baby Therapy Centre, Pretoria Cochlear Implant Programme	KMP 110, 482 ODL 482 SPP 210
7. Care centres Boikanyo Centre for children with multiple disabilities	KMP 483
8. Primary schools Wespark Laerskool, Die Heuwel Laerskool, Genl. Nic Smit Laerskool, Jacaranda Primary School, Lindopark Primary School, Genl. Beyers Laerskool, Booyens Laerskool, Riviera Laerskool	KMP 120, 283, 483 ODL 381, 481 SPP 281, 381, 382, 482
9. Special schools Sonitus School, Transoranje School, Unica School, New Hope School, Pretoria School, Eduplex, Carel du Toit Centre, Prospectus Novus Skool, Via Nova Skool	ODL 481, 482 SPP 481, 482
10. Nursery schools Beyersbytjies, Small Talk, Kwaggasrand, Lethlebile Day Care Centre	KMP 120, 483 SPP 281, 381, 382
11. Support groups Conversation groups, Speak Easy group	SPP 482
12. Industries Volkswagen: Panel beaters and factories	ODL 281
13. Speech, Voice and Hearing Clinic, Dept of Communication Pathology	KMP 120, 210, 482 ODL 281, 382, 482 SPP 281, 381, 481, 482
14. PPS-CHRIB, Dept of Communication Pathology, UP	KMP 120, 210, 220, 482
15. Private audiology and speech-language therapy practices Belltone, HASS, Mariet du Plooy, Hearing Innovations, and various others, depending on students' choice	KMP 210 ODL 381, 382
16. Parent organizations Down Syndrome Association of Tshwane	KMP 210
17. Homes for senior citizens Susan Strydom, Jaffa, Ons Tuis	SPP 482
18. Home-based care	SPP 482

5.2 Objectives for 2009

- To implement and assess the new first year curriculum
- To implement the newly acquired knowledge in all assessment practices and to write appropriate assessment criteria in all study guides

- To continue with the ASL module as best practice in community engagement and to keep focus in all practical training on the Millennium Development Goals (eight in all) of the United Nations
- To continue with in-service training workshops by the Department for Education Innovation to promote a standard of excellence in all teaching activities
- To share in new staff members' knowledge of writing study guides after they have attended the UP induction course.

6. RESEARCH

Table 6.1: Research articles published by staff members in accredited journals

TITLE	PUBLICATION	AUTHOR/S
Continuous versus pulsed pure-tone audiometry in school-aged children	<i>South African Journal of Communication Disorders</i> Vol. 55	Van Dijk C Osman N
Challenges to preschool teachers in learners' acquisition of English as Language of Teaching and Learning	<i>SA Journal of Education</i> 28, 53-75	Du Plessis S Louw B
Hearing instrument fittings of pre-school children: Do we meet the prescription goals?	<i>International Journal of Audiology</i> 47 (S1) September, S62-S71	Strauss S Van Dijk C
Infant hearing loss in South Africa: Age of intervention and parental needs for support	<i>International Journal of Audiology</i> 47 (1) June, 30-35	Talita van der Spuy Lidia Pottas
The need for standardization of methods for worldwide infant hearing screening: A systematic review	<i>The Laryngoscope</i> 118, 1830-1835	Olusanya BO Somefun AO Swanepoel D.
Auditory steady-state response and auditory brainstem response thresholds in children	<i>European Archives of Oto-Rhino-Laryngology</i> In press	Swanepoel D Ebrahim S
EHDI Africa – Advocating for infants with hearing loss in Africa	<i>International Journal of Audiology</i> 47 (1) S1-S2	Swanepoel D Störbeck C
Maternal views on infant hearing loss and early intervention in a South African community	<i>International Journal of Audiology</i> , 47 (1) 44-48	Swanepoel D Almec N
Early hearing detection and intervention services in the public health sector of South Africa	<i>International Journal of Audiology</i> 47 (1) 23-29	Theunissen M Swanepoel D
Parental perceptions and practices of emergent literacy development in young children with Down syndrome: The development of intervention guidelines	<i>South African Journal of Communication Disorders</i> Vol. 55	Van Heerden C Kritzinger A
Auditory steady-state responses to bone conduction stimuli in children with hearing loss.	<i>International Journal of Pediatric Otorhinolaryngology</i> In press	Swanepoel D Ebrahim S Friedl P Swanepoel A Pottas L

Table 6.2: Non-accredited scientific publications by staff members

TITLE	PUBLICATION	AUTHOR/S
Infant hearing loss in developing countries – a silent health priority	<i>Audiology Today</i> 20 (3),16-24	Swanepoel D
Children with hearing loss in South Africa: A historical perspective of education to inform the future	<i>Journal of the South African Association of Audiologist</i> Vol 1 (1) www.audiologysa.co.za	Van Dijk C Hugo R Louw B
Update on electrophysiological tests used in the diagnosis of hearing disorders	<i>The Specialist Forum for Continuing Medical Education</i> 8 (11), 3-5	Van Dijk C Hofmeyer LM
Newborn hearing screening may predict sudden infant death syndrome	<i>SA Family Practice</i> Guest editorial, 50 (1), 61	Swanepoel D

Table 6.3: Chapters by staff members in books

TITLE	PUBLICATION	AUTHOR/S
A theoretical framework for the characterization of pathological speech sensorimotor control	McNeil MR (Ed.) <i>Clinical management of sensorimotor speech disorders</i> 2nd Edition. New York: Thieme	Van der Merwe A
Worster-Drought syndrome	McNeil MR (Ed.) <i>Clinical management of sensorimotor speech disorders</i> 2nd Edition. New York: Thieme	Van der Merwe A

Table 6.4: International conference contributions by staff members

CATEGORY	CONFERENCE NAME	PRESENTATION TITLE	PRESENTER/S
<i>International Conference contribution:</i> • Keynote address/ Invited paper	<i>Annual Convention of the American Academy of Audiology</i> Marion Downs Pediatric Audiology Lecture, Charlotte, NC., USA, 2-5 April	Infant hearing loss: silent epidemic of developing countries	Swanepoel D
• Papers	<i>The International Conference on Newborn Hearing Screening Diagnosis and Intervention</i> 19 – 21 June, Cernobbio, Como, Italy	Auditory steady-state responses to bone conduction stimuli in children with hearing loss	Swanepoel D Ebrahim S Friedland P Pottas L
	<i>The International Conference on Newborn Hearing Screening Diagnosis and Intervention</i> 19 – 21 June Cernobbio, Como, Italy	Early detection and intervention for infant hearing loss in South Africa	Swanepoel D Störbeck C
	<i>The International Conference on Newborn Hearing Screening Diagnosis and Intervention</i> 19 – 21 June Cernobbio, Como, Italy	Hearing-impairment in young South African children: Parents' initial needs for information and support	Van der Spuy T Pottas L Venter N (Read by Swanepoel D)

CATEGORY	CONFERENCE NAME	PRESENTATION TITLE	PRESENTER/S
	6th international Conference on New Directions in the Humanities July 15-18, Istanbul, Turkey	Creative guidelines for obtaining informed consent from vulnerable human participants in social science research in South Africa	Louw B Delpont CL
• Posters	ASHA Convention November 2008, Chicago USA	Linking people with aphasia and cognitive communication disabilities using technology	Avent J Glista S Goldblum G
	2008 International Congress of Audiology 8-12 June, Hong Kong	A comparison of list compilation methods in a test of sentence recognition in noise	Theunisen M Swanepoel D Hanekom JJ
	2008 International Congress of Audiology 8-12 June, Hong Kong	Early hearing detection and intervention services in the public health sector of South Africa	Theunisen M Swanepoel D

Table 6.5: National conference contributions by staff members

CATEGORY	CONFERENCE / CONGRESS	PRESENTATION TITLE	PRESENTER/S
National/ regional conference and seminar/ workshop contributions • Papers	South African Paediatric Association Congress 29 May – 1 June 2008, Sun City	A hearing screening programme for NICU infants at Kalafong hospital	Delpont S Swanepoel D Strauss S
	South African Paediatric Association Congress 29 May – 1 June 2008, Sun City	Early intervention for infant hearing loss – current status in South Africa	Friedland P Swanepoel D Delpont S Störbeck C
	Eduvate 2008 June 2008, UP	A diversified approach for obtaining optimum student feedback on practical modules	Kriek H Zsilavec U
	Ndiyeva Audiology Conference 10 - 12 July, Stellenbosch	Cost-benefits of early detection: Current status of screening projects in South Africa	Swanepoel D
	Ndiyeva Audiology Conference 10 - 12 July, Stellenbosch	Summary and overview	Swanepoel D
	Department of Communication Pathology Centenary Conference: Fast Forward Over a Century 6 September 2008, UP	Ethics in Audiology and Speech Language Pathology: Practice and Research	Louw B Zsilavec U L Soer ME
	Department of Communication Pathology Centenary Conference: Fast Forward Over a Century 6 September 2008, UP	Cerumen management: Expanding our role in the 21 st century	Heinze B
	Department of Communication Pathology Centenary Conference: Fast Forward Over a Century 6 September 2008, UP	Developments in the field of cochlear implants	Van Dijk C
	Department of Communication Pathology Centenary Conference: Fast Forward Over a Century 6 September 2008, UP	Noise-induced hearing loss in children	Pottas L

CATEGORY	CONFERENCE / CONGRESS	PRESENTATION TITLE	PRESENTER/S
	<i>Department of Communication Pathology Centenary Conference: Fast Forward Over a Century</i> 6 September 2008, UP	Recent trends in paediatric hearing aid fittings	Van der Spuy TE
	<i>Department of Communication Pathology Centenary Conference: Fast Forward Over a Century</i> 6 September 2008, UP	Auditory pharmacology	Seoke SY
	<i>Department of Communication Pathology Centenary Conference: Fast Forward Over a Century</i> 6 September 2008, UP	Early detection of cochlear damage with OAE's: The Hearing Coach	Soer ME
	<i>Department of Communication Pathology Centenary Conference: Fast Forward Over a Century</i> 6 September 2008, UP	A biomedical perspective on autism: the gut-brain connection	Redelinghuys A
	<i>Department of Communication Pathology Centenary Conference: Fast Forward Over a Century</i> 6 September 2008, UP	The assessment and management of adult dysphagia associated with HIV/AIDS	Stipinovich AM
	<i>Department of Communication Pathology Centenary Conference: Fast Forward Over a Century</i> 6 September 2008, UP	Early communication intervention. A bright future	Kritzinger AM Louw B
	<i>Department of Communication Pathology Centenary Conference: Fast Forward Over a Century</i> 6 September 2008, UP	Caregiver-child interaction for intervention	Redelinghuys A
	<i>Department of Communication Pathology Centenary Conference: Fast Forward Over a Century</i> 6 September 2008, UP	Emergent literacy: Past and future trends	Wium AM Louw B Eloff I
	<i>Department of Communication Pathology Centenary Conference: Fast Forward Over a Century</i> 6 September 2008, UP	Motor learning principles in speech intervention	Van der Merwe A
	<i>Department of Communication Pathology Centenary Conference: Fast Forward Over a Century</i> 6 September 2008, UP	Stuttering: Empowering the learner	Zsilavec UL
	<i>Department of Communication Pathology Centenary Conference: Fast Forward Over a Century</i> 6 September 2008, UP	Opening address and closing: The way forward	Louw B
	<i>Department of Communication Pathology Centenary Conference: Fast Forward Over a Century</i> 6 September 2008, UP	Evaluating the efferent auditory system	Swanepoel D Van Zyl A
	<i>Department of Education Foundation Phase Conference – Laying solid foundations for learning</i> 30 September – 1 October, Mokopane	The development of literacy skills: A continued professional development programme for foundation phase teachers	Wium AM Louw B Eloff I
	<i>Pediatric ENT and Audiology Conference 2008</i> 2-5 November, Durban	EABR's in a group of cochlear implant patients	Van Dijk C
	<i>Pediatric ENT and Audiology Conference 2008</i> 2-5 November, Durban	Infant hearing loss in developing countries: A silent health priority	Swanepoel D

CATEGORY	CONFERENCE / CONGRESS	PRESENTATION TITLE	PRESENTER/S
	Pediatric ENT and Audiology Conference 2008 2-5 November, Durban	Telemedicine for hearing loss – the only hope for widespread impact in developing countries	Swanepoel D Koekemoer D
	Pediatric ENT and Audiology Conference 2008 2-5 November, Durban	EABR's ia a group of cochlear implant patients	Van Dijk A (PCIP)
• Posters	27th Conference on Priorities in Perinatal Care in Southern Africa 11 – 14 March, Johannesburg	The effect of an early communication intervention training programme on mothers in kangaroo mother care	Kritzinger A Van Rooyen E

Table 6.6: Other scientific presentations

CATEGORY	AUDIENCE	PRESENTATION TITLE	PRESENTER/S
Inaugural address	Scientific community and others	<i>Communication Pathology: Yesterday and today for tomorrow</i>	Louw B

Table 6.7: Research reports by final year students

STUDENTS	TITLE	SUPERVISORS
Botha C Cater CD	Afrikaans Test for Sentence Recognition in Noise: Test Reliability	Dr D Swanepoel
Carstens A Hollier N Mosca R	Pervasive developmental disorders: Speech-Language Therapists' perceptions and needs regarding further training	Ms A Redelinghuys Ms A Stipinovich
Clough C Steven T	Fitting adults with unilateral hearing loss: Hearing aids versus FM systems	Dr C van Dijk
Coetzee A Snyman A	"Behoeftte aan gehoorkonserving in hoë-impak aërobiese klasse"	Dr L Pottas Prof. B Louw
Currie L Osman F	Electrical Auditory Brainstem Responses (EABR's) of adult cochlear implant users	Dr C van Dijk
Damonse N Fourie K Gwala K	The frequency of verbal perseveration in bilingual speakers with RHD	Prof. A vd Merwe Ms A Stipinovich
Erasmus M Grové C	"Gehoorkonservingprogram – <i>Hearing coach</i> : sensitiviteit en spesifisiteit van TOOAE's en DPOAE's by normaalhorende volwassenes"	Ms E Groenewald Dr M Soer
Hein B Thompson K	Educational placement of school-aged children with cochlear implants: influencing factors and parental perceptions	Dr M Soer
Joubert L	Early hearing detection in a developing country: The knowledge, perceptions and referral practices of nurses in a neonatal intensive care unit	Ms E Groenewald
Nel J Meyer A	Parental aspirations for the future communication abilities of their young children with Down Syndrome	Prof. A Kritzinger Ms U Zsilavec
Opperman M Swart I	The perception and knowledge of adolescents regarding hearing conservation	Dr L Pottas Prof. B Louw
Sieburg E Van Rensburg K	Infant hearing loss: Physician and medical student knowledge and perceptions	Dr D Swanepoel
Venter J Viljoen C	Children with Hearing Loss: Parental needs regarding diagnosis	Ms T van der Spuy Prof. A Kritzinger

Table 6.8: Postgraduate research: Master's dissertations

Student	Title	Supervisor
Theunissen M (with distinction)	Dissertation: Development of an Afrikaans test for sentence recognition in noise	Supervisor: Dr DCD Swanepoel Co-supervisor: Prof. JJ Hanekom External examiner: Dr RW Harris (Brigham Young University, USA)
Van Zyl Z	Dissertation: Narratives of a spouse regarding his experiences with dementia of the Alzheimer's type (DAT)	Supervisor: Mrs AM Stipinovich Co-supervisor: Dr E Naudé External examiner: Ms DM Jones (Private practice)

6.1 Objectives for 2009

- To involve young members of staff in research activities and to mentor them in the publication process
- To formalize joint research with the two appointed extra-ordinary professors and to plan publications in cooperation with them
- To sustain, but also endeavour to improve the current research output
- To pay renewed attention to the research culture in the department

7. COMMUNITY ENGAGEMENT**Table 7.1: Continuous professional development seminars presented by the Department of Communication Pathology**

Seminar	Presenters
PPS-CHRIB seminar: 8 March 2008 <i>New developments in intervention with preschoolers with cleft palate</i>	Prof. B Louw and Prof. AM Kritzinger
Audiology seminar: 24 July 2008 <i>Tinnitus, hyperacusis and electro-acoustic measurements in Audiology</i>	Prof. J Hall Dr D Swanepoel
Seminar: 16 August 2008 <i>New trends in the management of aphasia and cognitive communication disorders: The role of group therapy</i>	Dr G Goldblum
Department of Communication Pathology Centenary Conference: Fast Forward Over a Century: 6 September 2008	Presented by 14 members of staff (Refer to Table 6.5)

Table 7.2: Community engagement activities undertaken by staff members

Member/s of staff and presentation	Organization and location	Date
Dr G Goldblum - Coordinator: Conversational groups for persons with aphasia and cognitive communication disorders - Open evening for conversational groups	Dept of Communication Pathology Burgundy's, UP-campus	Weekly meetings 15 October
Mrs B Heinze - The establishment of the Tinnitus Therapy Unit - Short article about the newly established Tinnitus Therapy Unit	Dept of Communication Pathology, UP Post-graduate supplement, <i>The Mail and Guardian</i>	Launched on 1 September September

Member/s of staff and presentation	Organization and location	Date
Prof. AM Kritzinger - Talk: Nurses at Kalafong Hospital - Training: Health professionals from Ghana - Training: Health professionals from Indonesia - Talk: Dieticians at Kalafong Hospital - Radio Talk - Talk: Paediatricians at Kalafong Hospital	KMC Unit KMC Unit KMC Unit Dept of Dietetics Radio Ripple, Pretoria Dept of Paediatrics	25 April 2 June 24 May 24 July 7 August 22 October
Prof. B Louw - University of Pretoria Realities: Part of panel presentation, Education Induction Course - Opening address: CHRIB Seminar - Opening address: Tinnitus, hyperacusis and electro-acoustic measurements in Audiology - Opening address: New trends in the management of aphasia and cognitive communication disorders: The role of group therapy - Opening address: Centenary Conference	Dept of Education Innovation, UP Dept of Communication Pathology, UP Dept of Communication Pathology, Eduplex Convention Centre Dept of Communication Pathology, UP Dept of Communication Pathology, UP	17 January 8 March 24 July 6 September 16 August
Prof. B Louw Dr M Soer Lecture: <i>Spirit of Africa</i> . American delegates	Johannesburg	13 August
Dr M Soer Magazine article: <i>I hear you</i>	The magazine <i>Living and Loving</i>	March issue
Mrs M Shibambu Consultant at the Special Olympics	Special Olympics, Old Mutual Stadium (KZN)	30-31 October
Mrs A Stipinovich Handing over of AAC device	Residents and governing body of <i>Ons Tuis</i> home for the aged, Pretoria	4 March
Ms T van der Spuy Talk: Hearing and Middle-ear infection in children with Down syndrome	Down Syndrome Association of SA, Centurion	13 March
Ms T van der Spuy Mrs R Chester-Brown Workshop on assessment and rehabilitation of children with cochlear implants (pre- and post-implant assessment protocols)	Dept of Communication Pathology, UP	9 October
Mrs U Zsilavec - Talk: <i>Working with individuals who have a communication disorder</i> - Talk: <i>What are communication disorders?</i> - Coordinator: Speakeasy Group for persons who stutter	M Social Work students, UP M Music Therapy students. Dept of Music, UP Dept of Communication Pathology, UP	29 February 4 September 8 meetings

7.1 Objectives for 2009

- To present four continuous professional development seminars
- To encourage staff to participate in community engagement activities as a means to raise awareness of the needs of individuals with communication disorders in

terms of speech, language and/or hearing, and to market the separate courses for the two professions of Audiology and Speech-Language Therapy

- To continue to act as an accreditor of continuous professional development activities on behalf of the HPCSA
To focus on the United Nations Millennium Development Goals in all community engagement activities of the department

8. SPECIALIST CENTRE: PPS-CHRIB

Table 8.1: PPS-CHRIB student training and client profile in 2008

Student training	Students / Clients
Undergraduate student training	
• B Communication Pathology IV (Intensive training)	29
• B Communication Pathology III	40
• B Communication Pathology II	39
• B Communication Pathology I	21
• MBChB III	78
• Occupational Therapy II	35
Postgraduate student training	
• M Educational Psychology	9
• M ECI	2
TOTAL	253
Number of assessments: Parents with young children	
• First assessments	43
• Re-assessments	15
TOTAL	58
Number of families who received early communication intervention by final year students at the Department of Communication Pathology	27
TOTAL	27
Risk conditions in 58 clients	
• Cleft lip and palate	20
• Down syndrome	6
• Slow expressive language development	10
• Suspected autism spectrum disorder	6
• Cerebral palsy	3
• Developmental apraxia of speech	2
• Foetal alcohol spectrum disorders	2
Other risk conditions: Rubenstein Taybi syndrome, ADHD, Velo-cardio-facial syndrome, De Barys syndrome, Prader Willi syndrome, Developmental delay	9
TOTAL	58
Geographical distribution of PPS-CHRIB clients	
• Pretoria and surrounding areas	41
• Gauteng	11
• North West	5
• KwaZulu Natal	1
TOTAL	58
Language diversity of clients	
• Afrikaans	37
• English	12
• Setswana	6
• Zulu	2
• Luganda (Uganda)	1
TOTAL	58

8.1 Objectives for 2009

- To continue assessments in the trans-disciplinary arena and promote the active participation of team members from different disciplines, i.e. Speech-Language Therapy, Audiology, Occupational Therapy, Educational Psychology and Community Health Nursing
- To present one continuous professional development seminar in September 2009
- To publish articles flowing from masters' research in early communication intervention over the past two years

9 THE PRETORIA COCHLEAR IMPLANT PROGRAM (PCIP)

A total of 296 patients have been implanted since the first implantation in 1991. Until March 2008, the Pretoria Cochlear Implant Program implanted the Cochlear Nucleus device only but since Dr Hofmeyr joined the team the Advanced Bionics Corporation's Clarion device was implanted as well.

Table 9.1: Team members of the PCIP

Professional field	Members
Medicine	Prof. JG Swart Dr E Burden Dr G Moolman Dr L Hofmeyr Prof. M Tsifularo
Psychology	Dr I Strydom
Audiology and Speech-Language Therapy	Mrs R Chester-Browne Dr C van Dijk Mrs N Cass Dr M Soer Ms T van der Spuy Mrs L Hugo Dr S Seoke Mrs M Beukes

Table 9.2: Patient statistics 2008

	Children	Adults
Number of patients implanted in 2008	13*	5*
Patients from other programs	7	14
Total number of patients evaluated	28	22
Total number of devices upgraded in 2008	34	28

* TWO CHILDREN AND 2 ADULTS WERE IMPLANTED BILATERALLY.

9.1 Research outputs in 2008

The research of the PCIP is reflected in Section 6 of this report, Table 6.5, p. 13.

Table 9.3: PCIP's national and international contacts

Contact	Nature of contact
Cochlear Corporation's Nucleus device (SA agent: Southern ENT)	<ul style="list-style-type: none"> • Mr S Thomas (Cochlear (UK): Patient management in clinic, music appreciation and advanced mapping training. 21 August 2008 • Dr B Nevison (Cochlear Europe Ltd.): Training in ABI. 6, 7 October 2008. UP • Southern ENT: Training in Psycho-acoustics. 7 October 2008 • Ms C Sheradon (Cochlear UK): Rehabilitation workshop. 7 November 2008
Advanced Bionics Corporation's Clarion device (SA agent: Medifix)	<ul style="list-style-type: none"> • Mapping audiologists from the PCIP were invited to attend a training workshop by Advanced Bionics Corporation at the University of Leiden, the Netherlands, 10 – 13 March 2008. • In-theatre training with Advanced Bionics Corporation: Surgery and switch-on. 20 March, 5 and 6 May, 8 July, 31 October 2008 • Surgeon: Dr Rolien Free • Audiologists: Ms E Claeys and Ms Eileen (The Netherlands)
Communities	<ul style="list-style-type: none"> • Training of school therapists involved with cochlear implant recipients, focusing on evaluation protocols, rehabilitation, and device maintenance. 9 October 2008, UP • Sonitus School: Visit and training by PCIP team and Dr E Schoeman (Psychologist). 28 May 2008

9.2 Objectives for 2009

- To provide accountable services of a high standard to clients and their significant others
- To liaise with other cochlear implant teams both locally and internationally to ensure that service delivery is in accordance with latest trends
- To provide continued opportunities for students to observe sessions with clients which include assessment, programming and rehabilitation
- To promote opportunities for research that will enhance knowledge and service delivery in the field of cochlear implants

10. INTERNATIONAL VISITS, VISITORS AND COLLABORATION

Table 10.1: International visitors received in 2008

Date of visit	Visitors	Institution	Country
9 May	Dr O Falcke	Phonak	Switzerland
18 June	Mr Wan Boy	Audio-Medi Hi-Tech	India
27 June	Dr P Yates	Neurocom International	USA
15-27 July	Prof. J Hall	University of Florida, Gainesville	USA
13 August	35 Speech Language Therapists and Audiologists	People to People International	USA
4 November	Dr B Hayden	The PROMPT Institute, Santa Fe	USA

Table 10.2: International visits by staff members in 2008

Date	Staff	Institution	Country
March	Dr C van Dijk Mrs R Chester-Brown	University Leyden	Netherlands
June	Prof. B Louw	Eastern Tennessee State University	USA
June	Mrs U Zsilavec	Children's Hospital, Philadelphia	USA

Table 10 3: International collaboration during 2008

Staff Member	Collaborator	Affiliation	Country	Nature of Collaboration
Dr G Goldblum	Dr J Avent Dr S Glista	Western Michigan University Western Michigan University	USA	Paper presentation, ASHA Annual Conference, Chicago
Prof. B Louw	Prof. L D'Antonio	The Smile Train	USA	Ad Hoc Committee on Speech Services in Cleft Palate in Underserved Regions of the World
	Dr N Scherer	Eastern Tennessee State University	USA	International visit
	Dr R Strauss	University of North Carolina, Chapel Hill	USA	International visit
	Prof. P Donkor	Kwame Nkrumah University of Science and Technology	Ghana	International visit
	Dr M Cunningham	Seattle Children's Hospital	USA	Seattle – Kumasi Advocacy for Team Care in Africa
	Dr R Hopper	Seattle Children's Hospital	USA	Seattle – Kumasi Advocacy for Team Care in Africa
Dr M Soer	Prof. B Vinck	University of Ghent	Belgium	Extraordinary Professor and Co-supervisor, Master's student project
Dr DCD Swanepoel	Dr B Olusanya	University of Lagos, Nigeria and University College London	Nigeria	Publication
Prof. A vd Merwe	Dr D Hayden	The PROMPT Institute, Santa Fe	USA	Information exchange
Mrs R Chester-Browne	Advanced Bionic Corporation	University of Leyden	Netherlands	Specialized training course in cochlear implants

11. ACKNOWLEDGEMENTS

The Department of Communication Pathology's functioning and achievements would not have been possible without the leadership and support received on all levels during the course of 2008. The department therefore gratefully acknowledges the valuable input of the following individuals: Prof. C Pistorius, Principal; Profs. R Crewe, A Mogotlane and N Ogude, Vice Principals; Prof. N Grové, Registrar; Prof. M Muller and Prof. S Klopper, Deans, Faculty of Humanities; Prof. H Potgieter, Vice-Dean, Faculty of Humanities and Chair, School for Professional Social Sciences, Faculty of Humanities; and Prof. MT Speckman, Student Dean. The staff members of the various university departments of support services, and especially the Faculty of Humanities' Student Administration and the Faculty Management Team are sincerely thanked for enabling the department to function effectively within the university structure.

The teaching input of a number of academic departments of the university to the courses B. Communication Pathology and M. Communication Pathology is highly valued and the department extends its appreciation to the individual lecturers involved, as well as to their departments for facilitating this collaboration.

Finally, the staff and students of the department are thanked for their team approach, individual hard work and dedication to the department and their commitment to the professions of Audiology and Speech-Language Pathology and.

PROFESSOR BRENDA LOUW
HEAD: DEPARTMENT OF COMMUNICATION PATHOLOGY