

Fakulteit Geesteswetenskappe
Faculty of Humanities

Department of Speech-Language Pathology
and Audiology
Established in 1959

ANNUAL REPORT 2013

Editors: Prof. Bart Vinck
Prof. Alta Kritzinger
Co-workers: Departmental staff



UNIVERSITEIT VAN PRETORIA
UNIVERSITY OF PRETORIA
YUNIBESITHI YA PRETORIA

Denkleiers • Leading Minds • Dikgopolo tša Dihlalefi

TABLE OF CONTENTS

	PAGE
1. THE YEAR 2013 IN RETROSPECT	3
2. DEPARTMENTAL MANAGEMENT STRUCTURE	4
3. DEPARTMENTAL STAFF	5
• Major achievements by staff members	7
• Staff serving membership: Committees of the University of Pretoria	7
• Staff serving membership: Committees, associations, boards, councils and task groups	7
4. STUDENTS DEMOGRAPHICS AND ACHIEVEMENTS	10
• Undergraduate students	10
• Achievements by students	10
5. TEACHING AND LEARNING	11
• Clinical contexts utilized for student training	11
6. RESEARCH	12
• Peer-reviewed articles by staff members	12
• Publication of books	12
• International conference papers by staff members	13
• Papers delivered by staff members at national conferences	13
• Papers delivered by staff members at regional seminars	14
• Research reports by final year students	14
• Postgraduate research: MCommunication Pathology and DPhil	16
7. COMMUNITY ENGAGEMENT	16
• Continuous professional development seminars presented by the Department of Speech-Language Pathology and Audiology	16
• Department of Speech-Language Pathology and Audiology as continuous professional development accreditor during 2013	17
• Community engagement activities undertaken by staff members	18
8. SPECIALIST CLINIC: Clinic for High-Risk Babies (CHRIB)	19
9. UNIVERSITY OF PRETORIA COCHLEAR IMPLANT UNIT (UP-CIU)	20
10. INTERNATIONAL VISITS, VISITORS AND COLLABORATION	22
• International visits by members of staff	22
• International visitors	22

1. THE YEAR 2013 IN RETROSPECT

I will remember the year 2013 first of all as the year during which the name of our Department changed from Communication Pathology into Speech-Language Pathology and Audiology. This name change is only the first step where our training programmes become more in line with the international trends of our professions. In a second phase will also the names of our undergraduate and postgraduate degrees (masters and PhD) in Speech and Audiology change.

The year 2013 was also the start of a whole range of initiatives where our Department had to become in line with the new strategic plan -2025 of our University. This plan aims for excellence in teaching and high level research output. The new format of our postgraduate programmes and a new model of supervision resulted in an increased number of research output and postgraduate students. Our Department also changed the selection strategies for attracting a diverse and representative student population.

I am pleased to see that there is also a great diversity in clinical competences between the different staff members. A great variety of research lines and clinical expertise attracts many outside students to our Department. The Cochlear Implant Unit is also growing both in terms of clinical activity as well as in terms of research output.

We are a rich Department in terms of variety and universitas, in terms of excellent students and in terms of a highly competent staff profile.

My third year was again another very full and busy year, with many challenges, but as a family together we managed to reach the end the year with a great feeling of success and coherence. I want to thank everybody, students, staff, clients, and parents, who contributed to this success.

Regards

Professor Bart Vinck
HEAD: DEPARTMENT OF SPEECH-LANGUAGE PATHOLOGY AND AUDIOLOGY

2. DEPARTMENTAL MANAGEMENT STRUCTURE

The participatory management structure of the department is illustrated in Figure 2.1. All members of staff share responsibility for the effective functioning of the department as each has designated functions within the structure.

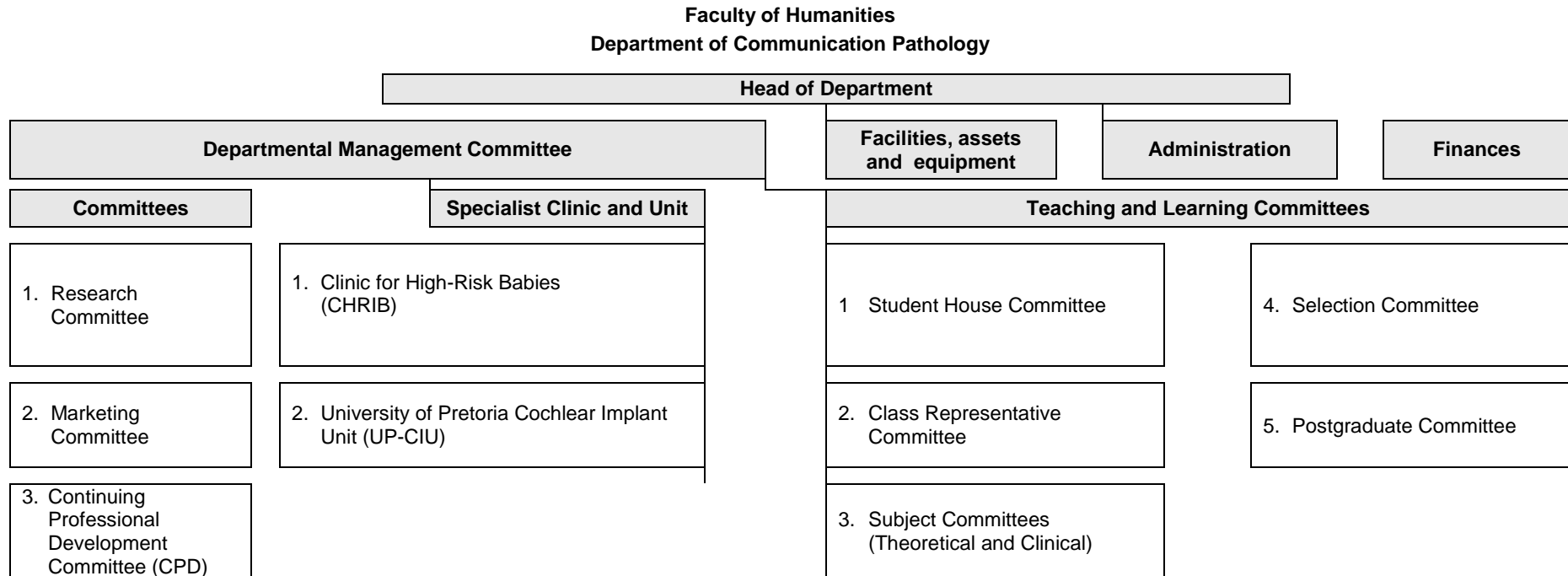


Figure 2.1: Departmental management structure

3. DEPARTMENTAL STAFF

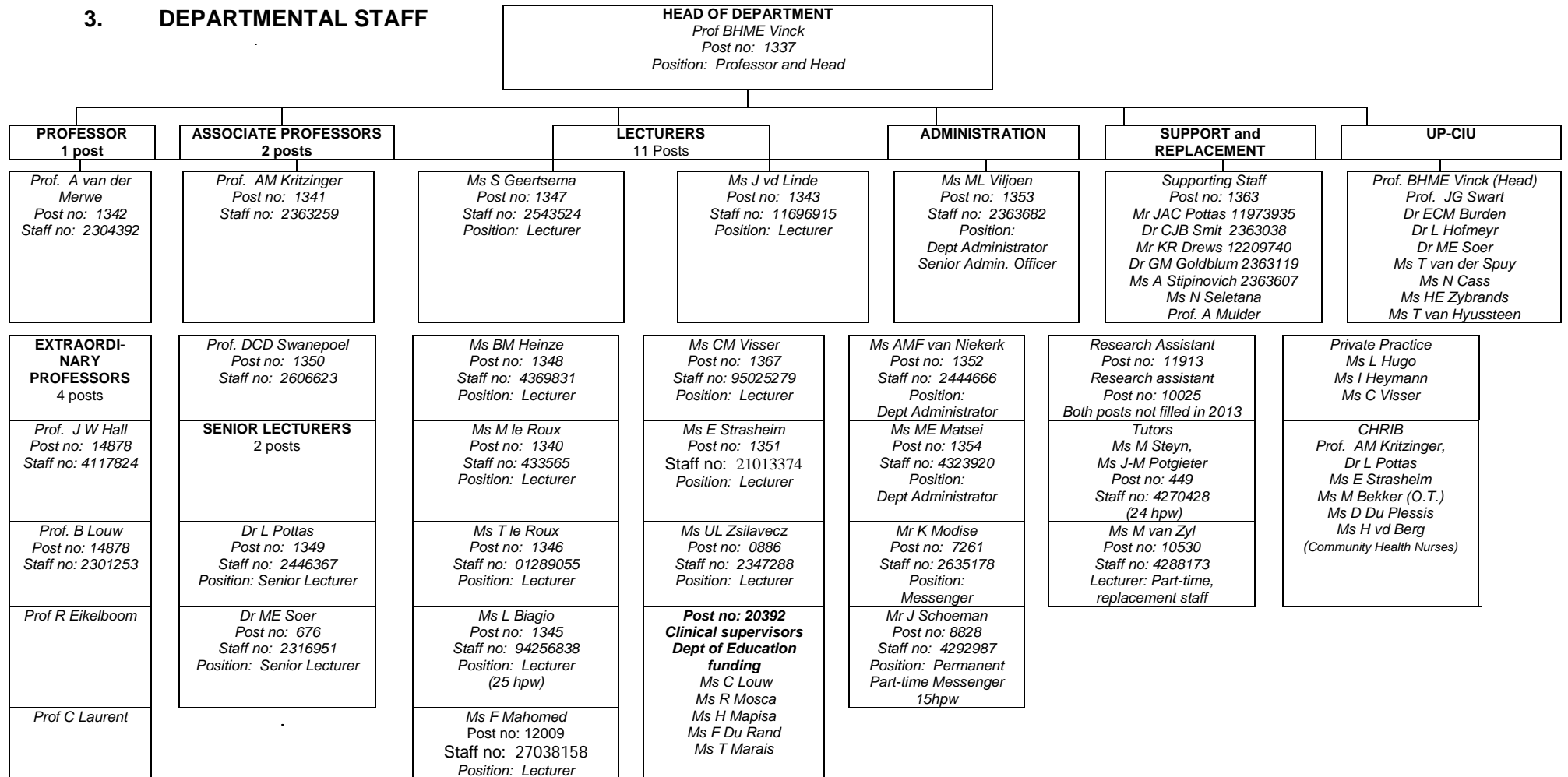


Figure 3.1: Department of Speech-Language Pathology and Audiology staff complement 2013



Departmental staff at the year-end function, the Farm Inn, 15 November 2013

Front row: R Mosca, F Mahomed, K Schoeman, C Louw, A van der Merwe, D Matsei, L Biagio

Second row: T Marais, E Strasheim, J-M Potgieter, M Steyn, C Visser, D Swanepoel, L Pottas, M Le Roux, M Soer, U Zsilavec, B Heinze, B Vinck, R Viljoen

Last row: A Kritzinger, L Hugo, T Le Roux, I Heymann, N Cass, T van Zyl, A Visser, K Modise, A van Niekerk

Complete list of departmental staff 2013

Senior staff

Prof. BHME Vinck, Prof. AM Kritzinger, Dr L Pottas, Dr ME Soer, Prof. DCD Swanepoel, Prof. A van der Merwe, Ms UL Zsilavec

Junior staff

Ms L Biagio, Ms S Geertsema, Ms BM Heinze, Ms M le Roux, Ms T le Roux, Ms CM Louw, Ms F Mahomed, Ms J van der Linde,

Part-time staff

Mr C Drews, Ms F du Rand, Dr GM Goldblum, Ms C Louw, Ms H Mapisa, Ms T Marais, Ms R Mosca, Prof A Mulder, Ms S Pietersen, Mr C Pottas, Ms N Seletana, Dr C Smit, Ms S Steyn, Ms A Stipinovich

Departmental tutors

Ms J-M Potgieter, Ms M Steyn

Administrative staff

Ms M Matsei, Mr K Modise, Ms G Nel, Mr JJ Schoeman, Ms AMF van Niekerk, Ms R Viljoen

Pretoria Cochlear Implant Unit:

Ms M Beukes, Ms N Cass, Ms T van Zyl, Ms E Zybrands

Private audiologists:

Ms I Heymann, Ms L Hugo, Ms C Visser

Cleaning staff:

Ms N Sekwati, Ms S Mokgalaka

Table 3.1: Major achievements by staff members

Staff member	Achievements
Ms B Heinze	- Vice-Chancellor's academic career award
Ms F Mahomed	- Winner of the Faculty of Humanities Postgraduate Research Prize for Research Master's degree category, 24 August 2013. Study leader: Prof. DCD Swanepoel
Prof. DCD Swanepoel	- Appointed as full professor at the Department of Speech-Language Pathology and Audiology - Exceptional Young Researchers Award 2013, University of Pretoria - Vice-Chancellor's Postdoctoral fellowship awarded as supervisor/host. R200 000 pa (for 2 years). Candidate: Dr Vijay Narne - UP Patent filed for mobile phone hearing screening with Prof De Wet Swanepoel as inventor with Dr Herman Myburgh
Ms J van der Linde	- Mellon Foundation Research Award as part of the Vulnerability research theme - Vice-Chancellor's academic career award

Prof. A van der Merwe	- Prof. van der Merwe from the University of Pretoria and Prof. Diane Kendall from the University of Washington received a Fulbright scholarship from the Government of the USA for Prof. Kendall to visit the Department of Speech-Language Pathology and Audiology for five months during 2013
Prof. BHME Vinck	- Appointed as chair of the Cluster of Social Sciences in the Faculty of Humanities - Inaugural lecture: "The Future is Hear" 2 September 2013

Table 3.2: Staff serving membership: Committees of the University of Pretoria

Staff member	Committee	Portfolio
Prof. AM Kritzinger	• Teaching and Learning Committee: Faculty of Humanities	• Member
Prof. DCD Swanepoel	• Postgraduate Research Committee: Faculty of Humanities	• Member
Prof. A van der Merwe	• Research Committee: Faculty of Humanities • Research Information System: Faculty of Humanities	• Member • Faculty co-ordinator
Prof. BHME Vinck	• Dean's Advisory Committee: Faculty of Humanities • Cluster of Social Sciences in the Faculty of Humanities	• Member • Chair

Table 3.3: Staff serving membership: Committees, associations, boards, councils, task groups

Staff Member	Body	Appointed position
Ms S Geertsema	The National Red Apple Dyslexia Association	Appointed board member
Prof. AM Kritzinger	South African Neonate, Infant and Toddler Support Association (SANITSA) Reviewer	Board Member: Speech-Language Therapy South African Journal of Communication Disorders
Dr L Pottas	South African Speech-Language and Hearing Association (SASLHA)	Member: Ethics and Standards Committee
Dr ME Soer	Society of Hearing Aid Acousticians (SHAA)	Lifelong Honorary Member
	South African Speech-Language and Hearing Association (SASLHA)	Member: Ethics and Standards Committee
	SAAA (South African Academy of Audiologists)	Adjudicator for annual Audiology Awards
	South African Bureau of Standards	Member: Working Group 43, Acoustics
Prof. DCD Swanepoel	World Health Organization (WHO), International Classification of Functioning and Health (ICF) steering committee	Member, representing Africa for the development of a Core Set of questions for classification of hearing impairment as a chronic health condition (2008 – 2011)
	International Society of Audiology (ISA)	Co-chair of the Task Force of the American Academy of Audiology for Tele-Audiology
	International Society of Audiology (ISA)	Executive Board member, representative for affiliate societies
	South African Association for Audiology	Ethics committee member

Staff Member	Body	Appointed position
	Editorial board member of the following international journals:	International Journal of Audiology The International Journal of Health Science Education Journal of Speech, Language and Hearing Research (Guest editor)
	Reviewer of the following international journals:	International Journal of Audiology International Journal of Pediatric Otorhinolaryngology Journal of Occupational and Environmental Hygiene Ear and Hearing South African Medical Journal South African Journal of Communication Disorders Journal of Telemedicine and Telecare Telemedicine and e-Health Journal of the American Academy of Audiology BMJ Open Journal of Medical Internet Research
Ms UL Zsilavec	Department of Health	Liaison re community service year
	South African Speech-Language and Hearing Association (SASLHA)	Chair: Ethics and Standards Committee

4. STUDENTS: DEMOGRAPHICS AND ACHIEVEMENTS 2013

2013														
Code	Academic Plan	Level	Asian		Asian Total	Black		Black Total	Coloured	Coloured Total	White		White Total	Grand Total
			Fem ale	Male		Fem ale	Male		Female		Femal e	Male		
011225 55	Advanced Diploma: Hearing Aid Acoustics	01		2	2	5	3	8			6	5	11	21
		FIN	2	2	4	2	2	4			11	6	17	25
01122555 Total			2	4	6	7	5	12			17	11	28	46
011350 21	BCommunication Pathology: Speech-Language Pathology	01	3		3						29	1	30	33
		02	2		2				1	1	35		35	38
		03	1		1	1		1			25		25	27
		FIN	1		1	3		3	1	1	21		21	26
01135021 Total			7		7	4		4	2	2	110	1	111	124
011350 31	BCommunication Pathology: Audiology	01	2		2	3	2	5			35	3	38	45
		02	4		4	3		3	1	1	16	1	17	25
		03	1		1	3		3			21	1	22	26
		FIN	3		3	5		5			22	1	23	31
01135031 Total			10		10	14	2	16	1	1	94	6	100	127
012500 21	MCommunication Pathology: Communication Pathology	01	1		1						8		8	9
		FIN	1		1	1		1			20		20	22
01250021 Total			2		2	1		1			28		28	31
012646 11	DPhil: Communication Pathology	FIN	1	1	2						10		10	12
01264611 Total			1	1	2						10		10	12

Table 4.7: Achievements by final year undergraduate students during 2013

Name	Achievement
Not available yet	SASLHA Prize – Best final year student in Audiology – Clinical
	Susan M Swart Prize – Best final year student in Audiology – Academic
	SASLHA Prize - Best final year student in Speech Pathology – Clinical
	P De V Pienaar Prize – Best final year student in Speech Pathology – Academic
	A B Clemons Award for best research project
	SAAA Prize for the most professional student in Audiology

5. TEACHING AND LEARNING

Table 5.1: Clinical contexts utilized for student training during 2013

Clinical training sites	Modules
1. Tertiary hospitals: Steve Biko Academic hospital, 1 Military hospital, Dr George Mukhari hospital, Chris Hani Baragwanath hospital, Universitas hospital, Charlotte Maxeke hospital, Red Cross War Memorial Children's hospital, Groote Schuur hospital	KMP 381 ODL 482 ODL 382
2. Secondary level hospitals Pelenomi, Witrand, King Edward VIII, Leratong, 1Military, RK Kahn, Tshwane District, Rob Ferreira, Helen Joseph, Tintswalo, Stanger, Heidelberg and Kalafong Hospital	KMP 281 381, 482 ODL 281, 482
3. Private hospitals and Centres Eugene Marais hospital, Femina hospital, Kloof hospital, Little Company of Mary hospital, Medforum hospital, Muelmed Rehabilitation Centre	KMP 381, 483 ODL 382 SPP 482
4. Primary health care clinics Daspoort Poli Clinic	KMP 483
5. Specialized clinics/centres Facial Cleft Deformities Clinic, University of Pretoria Cochlear Implant Unit, Consultation Voice Clinic, CHRIB, Vestibular Laboratory, Centre for Listening and Spoken Language	KMP 110, 482 ODL 382, 482 SPP 181, 210
6. Care centres Mamelodi Centre for children with multiple disabilities	KMP 483
7. Primary schools (7) Wespark Laerskool, Die Heuwel Laerskool, Genl. Nic Smit Laerskool, Lindopark Primary School, Genl. Beyers Laerskool, Booyens Laerskool, Riviera Laerskool	KMP 120, 281 483 ODL 381, 481 SPP 281, 381, 382, 482
8. Special schools Sonitus School, Transoranje School, New Hope School, Pretoria School, Eduplex, Carel du Toit Centre, Via Nova School, Alma Centre	ODL 481, 482 SPP 481, 482
9. Nursery schools Beyers Bytjies, Small Talk, Kwaggasrand, Sunnyside pre-primary school	KMP 120 SPP 281, 381, 382
10. Support groups – Conversation groups at the Department of Speech-Language Pathology and Audiology – Speakeasy	SPP 482
11. Industries Volkswagen: Panel beaters and factories	ODL 281
12. Speech, Voice and Hearing Clinic, Department of Communication Pathology	KMP 120, 210, 482 ODL 281, 382, 482 SPP 281, 381, 481, 482
13. CHRIB, Department of Speech-Language Pathology and Audiology	KMP 181, 210, 220, 482, SPP 381
14. Private audiology and speech-language therapy practices HASS, Mariet du Plooy, Hearing Innovations, and various other practices, depending on students' choice	KMP 210 ODL 381, 382
15. Homes for senior citizens Susan Strydom, Jaffa, Ons Tuis	SPP 482
16. Home-based care	SPP 482

6. RESEARCH

Table 6.1: ISI accredited articles by staff members

1.	Biagio L, Swanepoel D, Adeyemo A, Hall JW III, Vinck B (2013). Asynchronous video-otoscopy by a telehealth facilitator. <i>Telemedicine and e-Health</i> , 9(4):252-258.
2.	Bockstael A, De Bruyne L, Vinck B, Botteldooren D (2013). Hearing protection in industry: Companies' policy and workers' perception. <i>International Journal of Industrial Ergonomics</i> , 43: 512-517.
3.	Convery E, Keidser G, Caposecco A, Swanepoel D, Wong LLN, Shen E (2013). Hearing aid assembly management among adults from culturally and linguistically diverse backgrounds: toward the feasibility of self-fitting hearing aids. <i>International Journal of Audiology</i> , 52(6):385-93.
4.	Degeest S, Corthals P, Vinck B, Keppler H (2013). Prevalence and characteristics of tinnitus after leisure noise exposure in young adults. <i>Noise and Health</i> . IN PRESS.
5.	Erasmus D, Schutte L, van der Merwe M, Geertsema S (2013). Speech-language therapy for adolescents with written-language difficulties: The South African context. <i>South African Journal of Communication Disorders</i> , 60:50-58.
6.	Eikelboom RH, Swanepoel D, Motakef S, Upson GS (2013). Clinical validation of the AMTAS Automated Audiometer. <i>International Journal of Audiology</i> , 52(5):342-9.
7.	Groenewald H, Kritzinger A, Viviers, M (2013). Age-specific communication functioning of young children with cleft lip and palate in a South African database. <i>The Cleft-Palate Craniofacial Journal</i> , 50(6):717-729.
8.	Heinze B, Swanepoel D, Hofmeyr LM, Vinck BM (2013). Vestibular involvement in adults with HIV/AIDS. <i>Auris Nasus Larynx</i> , 1793:1-9.
9.	Maclennan-Smith F, Swanepoel D, Hall JW III (2013). Validity of diagnostic pure-tone audiometry without a sound-treated environment in older adults. <i>International Journal of Audiology</i> , 52:66-73.
10.	Mahomed F, Swanepoel D, Eikelboom RH, Soer M (2013). Validity of automated threshold audiometry: a systematic review and meta-analysis. <i>Ear and Hearing</i> , 34(6), 745-752.
11.	Margolis RH, Eikelboom RH, Johnson C, Ginter SM, Swanepoel D, Moore CJ (2013). False air-bone gaps at 4 kHz in listeners with normal hearing and sensorineural hearing loss. <i>International Journal of Audiology</i> , 52(8):526-32.
12.	Ooms E, Vanheule S, Meganck R, Vinck B, Watelet J-B, et al. (2013). Tinnitus, anxiety and automatic processing of affective information: An explorative study. <i>European Archives of Otorhinolaryngology</i> , 270(3):823–830.
13.	Potgieter JM, Swanepoel D, Heinze B, Hofmeyr LM, Hamersma H (2013). An auditory profile of sclerosteosis. <i>Journal of Laryngology & Otology</i> , IN PRESS.
14.	Strauss S, Swanepoel D, Becker P, Eloff Z, Hall JW III (2013). Noise and age related hearing loss - a study of 40 123 South African Gold Miners. <i>International Journal of Audiology</i> , IN PRESS
15.	Swanepoel D, Eikelboom R, Hunter ML, Friedland PL, Atlas MD (2013). Self-reported hearing loss in Baby Boomers from the Busselton healthy ageing study – audiometric correspondence and predictive value. <i>Journal of the American Academy of Audiology</i> , 24(6):514-521.
16.	Swanepoel D, Johl L, Pienaar D (2013). Childhood hearing loss and risk profile in a South African population. <i>International Journal of Pediatric Otorhinolaryngology</i> , 77(3):394-8.
17.	Swanepoel D, Maclennan-Smith F, Hall JW III (2013). Diagnostic pure-tone audiometry in schools: mobile testing without a sound-treated environment. <i>Journal of the American Academy of Audiology</i> , 24:9920-1000.
18.	Uys M, Pottas L, van Dijk C, Vinck B (2013). The influence of non-linear frequency compression on the perception of timbre and melody by adults with a moderate to severe hearing loss. <i>Communication Disorders, Deaf Studies & Hearing Aids</i> . 1(2) 6 pages. doi: 10.4172/jcdsha.1000104.
19.	Van der Linde J, Kritzinger A (2013). Perceptions of rural primary health care personnel about expansion of early communication intervention services to infants at risk <i>African Journal of Primary Health Care and Family Medicine</i> , 5 (1): 11 pages. doi: 10.4102/phcfm.v5i1.553.
20.	Van der Westhuizen Y, Swanepoel D, Heinze B, Hofmeyr LM (2013). Auditory and otological manifestations in adults with HIV/AIDS. <i>International Journal of Audiology</i> , 52:37-43.

Book associate editor:

Roeser RJ (2013). Roeser's Audiology Desk Reference. New York: Thieme. Associate editors: Clark JL, Meinke D, Swanepoel D, Wright GG.

Fagan J, Laurent C, Swanepoel D. Open Access Guide to Audiology and Hearing Aids for Otolaryngologists.

Book Chapters:

Swanepoel D, Laurent C. (2013) Hearing loss classification. In *Open Access Guide to Audiology and Hearing Aids for Otolaryngologists*; Edited by Fagan J, Laurent C and Swanepoel D.

Table 6.2: International conference papers by staff members 2013

Conference Name	Presentation Title	Presenter/s
11 th European Federation of Audiological Societies, Budapest, Hungary 19-22 June 2013	Paed OM at primary health care clinic in SA	Ms L Biagio
	Video-otoscopic recordings within SA telehealth service	
Colloquium on African Languages and Linguistics Leiden University, Netherlands 26-29 August 2013	The other side of PIRLS: An ELoLT triumph for the Setswana learner	Ms S Geertsema
	The Setswana learner in the ELoLT classroom: Literacy disaster or perhaps not?	Ms M Le Roux
Communication: The key to success Edge Hill University, Liverpool, UK 21 June 2013	Listening behaviour of preschool children with autism spectrum disorders	Prof AM Kritzinger J Mouton C Muller
4th Biennial Modern Developments in Audiology, Nashville, TN, USA 19 April 2013 [Invited Judith Gravel Lecture in Pediatric Audiology]	Prevention of infant hearing loss – a global priority.	Prof. DCD Swanepoel
3rd Ear Science Institute Australia Research Symposium, Perth, Australia, 28 June 2013. [Keynote]	Going mobile – mHealth for ear and hearing health.	
Sound Foundation Through Early Amplification. Chicago, USA, 8-10 December 2013 [Invited]	The global challenge of infant hearing loss.	
11 th European Federation of Audiology Societies (EFAS) Congress. Budapest, Hungary, 19 -22 June 2013.	Diagnostic pure-tone audiometry in schools: mobile testing without a sound treated environment.	
11 th European Federation of Audiology Societies (EFAS) Congress. Budapest, Hungary, 19 -22 June 2013.	Paediatric otitis media at a primary health care clinic in South Africa.	
11 th European Federation of Audiology Societies (EFAS) Congress. Budapest, Hungary, 19 -22 June 2013.	Video-otoscopic recordings in children within a South African telehealth service.	

Table 6.3: Papers delivered by staff members at national conferences 2013

Authors	Title of paper	Conference name	City	Date
Ms B Heinze	Vestibular Evoked Myogenic Potentials	2nd Update in the management of patients with vestibular disorders	Indaba Hotel, Johannesburg	26-28 July
Ms T le Roux	Hearing loss and its co-morbidities: An overview	Carel du Toit Annual Conference	Tygerberg, Cape Town	6 Sep
Ms UL Zsilavec	Workshop: New developments in stuttering intervention	ENT/SAHNOS/SAAA /SASLHA Congress 2013	Bloemfontein	28 Sep

Table 6.4: Papers delivered by staff members at regional seminars

Presenter	Title of paper
1. Supervising and mentoring students. Seminar hosted by Department of Speech-Language Pathology and Audiology, Pretoria, 23 January	
Ms U Zsilavec	What is mentoring and supervision?
Dr M Soer Dr L Pottas	Ethical issues: What should we know?
2. Acoustic analysis using PRAAT software, Seminar hosted by Department of Speech-Language Pathology and Audiology, Pretoria, 14 & 15 March	
Prof. BMHE Vinck	Biostatistics
3. Cochlear Implants: Do they meet their expectations? Seminar hosted by Department of Speech-Language Pathology and Audiology, Pretoria, 1 August	
Ms T Le Roux	Clinical profile and outcomes of a group of pediatric cochlear implant recipients in South Africa
Prof. BMHE Vinck	Hearing aids vs cochlear implants: A war between two giants?
4. The Annual CHRIB Seminar, hosted by CHRIB, Department of Speech-Language Pathology and Audiology, Pretoria, 7 September	
Dr L Pottas	Ethical dilemmas in early intervention
Prof. AM Kritzinger	Listening behaviour of preschool children with autism spectrum disorders
Ms R Mosca	Communication characteristics of young children with visual impairment
Ms T Le Roux	Young children with hearing loss and additional /multiple disabilities
Ms E Strasheim	Neonatal communication Intervention in the NICU. A group training programme for mothers in English and IsiZulu
5. 2*Day Stuttering Conference, Seminar hosted by Department of Speech-Language Pathology and Audiology, Pretoria, 24 & 25 September	
Ms M Le Roux Ms J van der Linde	Phonology as a concomitant. Critique: So what should we do?
Ms U Zsilavec	- Introduction - Social emotional impact of fluency disorders and management thereof
Ms U Zsilavec Ms J van der Linde	Differential diagnosis and management
Ms U Zsilavec Ms S Geertsema	A parent child interaction approach
6. 2*Day Vestibular Workshop: Balance your practice. Seminar hosted by Department of Speech-Language Pathology and Audiology, Pretoria, 7-8 November	
Ms BM Heinze	Clinical usefulness of laboratory testing
Prof. BMHE Vinck	Anatomy and physiology of the vestibular system

Table 6.5: Research reports by final year students in Audiology 2013

	Student Names	Project Title	Study leaders
1	Aaqilah Bhamjee, Mahmooda Noor Mohammed, Sabeehah Dawood	Clinical profile and outcomes of children and adult cochlear implant recipients at the JHB CIU	Ms T le Roux Prof. BHME Vinck
2	Roelien Roets, Marizaan van Zyl	Random GAP detection thresholds: Preliminary normative values in young South African adults	Dr L Pottas Ms CM Louw
3	Lynelle Grobler, Anike Benade	The perceived benefits of binaural hearing in cochlear implant adults	Ms CM Louw Dr ME Soer
4	Amerie Lerm	The effect of outer hair cell damage over a 3 hour session on air	Prof. BHME Vinck Ms BM Heinze
5	Jeannette Veldman, Sanja Deacon	Effect of ventilation tubes on OAE results	Dr M Soer Ms BM Heinze
6	Chantelle Dreyer, Monica du Toit, Zylani Naude	Adolescents attitude to noise, noise exposure and tinnitus and corresponding OAEs	Dr L Pottas Ms BM Heinze
7	Amy Klapwijk, Hennis Le Roux, Kirsten Mills	Clinical profile and outcomes of adult cochlear implant recipients of the UPCIU	Ms T le Roux Prof. BHME Vinck
8	Jomari Veenstra, Aretha Buys	Difference in temporal patterning between Caucasian and African population using the Duration pattern test and Frequency pattern test	Dr L Pottas Ms CM Louw
9	Nomonde Zikhundla, Marina Christoforou	The effects of smoking on OAE results	Dr M Soer Ms C Louw
10	Talani Ndlovu, Nokubongo Radebe	Audiological workforce profile and attitudes to telehealth– A South African perspective	Prof. DCD Swanepoel Prof. R Eikelboom
11	Tembi Sithole, Deliwe Ndobu	The value of the S.I.F.T.E.R. as used by educators to identify learners with hearing related difficulties	Dr M Soer Dr L Pottas
12	Clarisse Da Mata, Martelle Bornman	A comparison of the effect on temporal processing abilities of adults using bilateral cochlear implant as opposed to bimodal cochlear implant	Ms CM Louw Prof. BHME Vinck
13	Liné Botha, Meghan Kidson, Amanda Templeton	The combined effects of loud music exposure and alcohol consumption on the outer hair cell functioning of the cochlea	Prof. BHME Vinck Ms CM Louw

Table 6.6: Research reports by final year students in Speech-Language Pathology 2013

	Student Names	Project Title	Study leaders
1	Arina Meyer, Leona Mynhardt, Mariandi van Aswegen	Gestural communication of 12-36 month old children with Down syndrome	Prof. AM Kritzinger
2	Heather Sharma, Marissa vd Merwe, Pooja Vallabh	Description of English additional language learners' emergent literacy skills in an urban South African context	Ms J van der Linde Prof. AM Kritzinger
3	Cherise Francis, Samantha van den Berg	Cluster signs and symptoms in children with speech disorders: childhood apraxia of speech	Prof. A van der Merwe
4	Clare Klimek and Bailey Merven	Oral-motor feeding abilities of preschoolers with Autism Spectrum Disorders	Ms MM Viviers Prof. AM Kritzinger

	Student Names	Project Title	Study leaders
5	Rene Botha, Lisa Stoffberg, Amey van Schalkwyk	Frequency distribution of characteristics in young children suspected of Autism Spectrum Disorders	Prof. AM Kritzinger
6	Chloe Venter, Nadine Watson	Comparison of developmental skills in 3- 4 year old children with symptoms of Autism Spectrum Disorders and neurotypical children	Prof. AM Kritzinger
7	Leanne Hyams	A preliminary feeding profile of a high- risk group of infants presenting with retroviral disease exposure	Ms MM Viviers
8	Lee Ora du Pont Simone Mitchell	Perceptions of special educators regarding their role, competency and training in supporting learners using aided augmentative and alternative communication	Dr K Tönsing
9	Claire Anderson- Post, Samantha Richardson, Charne Bingham	Management of Dyslexia by SLPs in South Africa	Ms U Zsilavec Ms S Geertsema
10	Dominique Zieba, Stephanie Couch	Vocal effectiveness of Speech- Language Pathology students: Before and after voice use during service delivery	Ms J van der Linde Prof. A van der Merwe
11	Chézne Dowd, Jomari Schickerling	Communication development in toddlers with symptoms of Autism Spectrum Disorders compared to neurotypical peers: A matched-pair group study	Prof. AM Kritzinger
12	Noko Ngoepe	The effect of accent reduction training on the intelligibility of English additional language speakers	Ms M le Roux Ms S Geertsema

Table 6.7: Postgraduate research: MCommunication Pathology dissertations

Student	Title	Supervisors and examiners
1. Kock JFW	Hearing protection in mines: Evaluating the Noise Clipper® custom made hearing protection device	Supervisor: Dr ME Soer Co-supervisor: Prof. BHME Vinck External examiner: Dr DK Meinke (University of Northern Colorado, USA)
2. Maclennen- Smith FJ	Validity of diagnostic pure tone audiometry using a portable computerised audiometer without a sound-treated environment	Supervisor: Prof. DCD Swanepoel Co-supervisor: Prof. JW Hall External examiner: Prof. GT Church (University of Michigan, USA)
3. Mahomed, F	A systematic review and meta-analysis of automated pure tone audiometry	Supervisor: Prof. DCD Swanepoel Co-supervisor: Dr Me Soer External examiner: Prof. R Margolis (University of Minnesota, USA)
4. Potgieter JM	An auditory profile of sclerosteosis	Supervisor: Prof. DCD Swanepoel Co-supervisor: Ms BM Heinze External examiner: Prof. JL Danhauser (University of California, USA)

Table 6.8: Postgraduate research: DPhil Communication Pathology

Candidate	Thesis	Promoters and examiners
Strauss S	Noise-induced hearing loss: Prevalence, degree and impairment criteria in South African goldmines	Promoter: Prof. DCD Swanepoel Co-promoter: Prof. JW Hall Internal examiner: Dr L Pottas External examiners: DR DK Meinke (University of Northern Colorado, USA) DR TC Morata (National Institute for Occupational Safety and Health)
Moodley P	Comparison of educational facilitation approaches for Grade R English second language learning in Mpumalanga	Promoter: Prof. AM Kritzinger Co-promoter: Prof. BHME Vinck Internal examiner: Dr L Pottas External examiners: Prof. RJ Balfour (North-West University) Prof HL Jordaan (University of the Witwatersrand) Dr RA Levy (University of Sheffield, UK)

7. COMMUNITY ENGAGEMENT

Table 7.1: Continuous professional development seminars presented by the Department of Speech-Language Pathology and Audiology during 2013

Topic	Date	Presenters	Number of attendees
1. Supervision workshop	23 Jan	Ms U Zsilavec Dr M Soer Dr L Pottas	39
2. Acoustic phonetics using the PRAAT software	14 & 15 March	Prof P Corthals Prof. BHME Vinck	15
3. BAHA® Workshop	16 April	Ms N van Zyl Ms M Meyer	70
4. Cochlear Implants: Do they meet their expectations?	1 Aug	Prof. A van Wieringen Prof. BHME Vinck Ms T Le Roux Prof. J Hanekom Prof. T Hanekom	
5. Annual CHRIB Seminar Early Communication Intervention: A shared role for audiologists and speech-language therapists	7 Sep	Dr L Pottas Prof. AM Kritzinger Ms R Mosca Ms E Strasheim Ms T Le Roux	34
6. 2* Day Stuttering Conference 7. Fluency disorders and subtypes	24-25 Oct	Prof. J van Borsel Prof. D Kendall Ms U Zsilavec Ms J van der Linde Ms M Le Roux Ms S Geertsema	30
8. 2* Day Vestibular Workshop	7-8 Nov	Dr L Maes Prof. BHME Vinck Ms M du Plooy Ms C Rogers Ms BM Heinze	40

Table 7.3: Department of Communication Pathology as continuous professional development (CPD) accreditor during 2013

Different service providers	Number of service providers	Number of activities accredited
1. Journal clubs	4	37
2. Individuals who supervised student training	6	6
3. Level 3 activities: Individuals earning continuous educational units (CEU's) for postgraduate studies	2	3
4. Organizations, departments or units presenting workshops and seminars	10	23
5. Individuals presenting training seminars	4	4
6. Individuals earning CEU's as principle presenters of papers/posters at a conference or principle authors of articles in a peer-reviewed journal	3	3
7. CPD articles provided to members of a professional body	3	16
8. Personal CPD activities (conference/seminar/workshop attendance)	3	5
Total	35	97

Table 7.4: Community engagement activities undertaken by staff members 2013

Member/s of staff and presentation	Organisation and location	Date
<p>Ms S Geertsema</p> <ul style="list-style-type: none"> - New trends in the assessment of Language and Language Learning Disorders - Dyslexia in a nutshell - Dyslexia in a nutshell 	<p>Informal Private Practitioners' Group, St Alban's College, Pretoria</p> <p>Pretoria School for Children with Cerebral Palsy</p> <p>Prospectus Novus School</p>	<p>June</p> <p>9 Sep</p> <p>4 Nov</p>
<p>Dr GM Goldblum</p> <ul style="list-style-type: none"> - Coordinator: Conversational groups for individuals with aphasia and cognitive communication disorders - Discussion around aphasia with a group of individuals living with aphasia - Annual open evening for Conversational Groups (for family members and members of the public): <i>United through empowering projects and conversations for 18 years</i> Live SKYPE global choir: conducted with the Siyathemba Singer Choir (part of the Conversation Groups) and the Aphasia Tones at California State University, East Bay, USA – part of a global choir for individuals with aphasia. - Raising awareness about aphasia - The use of technology in the Conversation Groups for individuals with aphasia and cognitive communication disorders - <i>Aphasia Tones Holds Global Concert at CSU East Bay</i> 	<p>Department of Communication Pathology</p> <p>Live SKYPE hour-long call with group members of the Adler Aphasia Center, New Jersey</p> <p>Conference Centre, UP Live SKYPE global choir</p> <p>Interview with Karen Key SAfm as part of Stroke Awareness Week</p> <p>Interview with Karen Key SAfm: Health Update</p> <p>Lead article in <i>The Pioneer Newspaper</i>, California State University East Bay</p>	<p>Weekly meetings</p> <p>13 May</p> <p>16 Oct</p> <p>17 Sep</p> <p>24 Oct</p> <p>24 Oct</p>
<p>Ms BM Heinze</p> <ul style="list-style-type: none"> - Tinnitus assessment and management - Vestibular evoked myogenic potentials - What is tinnitus and what can be done 	<p>Talk presented to Audiologists at the Ear Institute</p> <p>Talk presented to Audiologists and ENTs at the Indaba Hotel</p> <p>Interview on SAfm</p>	<p>27 May</p> <p>26 July</p> <p>26 Nov</p>
<p>Prof. AM Kritzinger</p> <ul style="list-style-type: none"> - Parent training to support families with infants born with cleft lip and palate - The role of the speech-language therapy in the treatment of patients with clefts 	<p>Facial Cleft Deformities Clinic</p> <p>CPD talk at Dept of Oro-Facial-Maxillo Surgery</p>	<p>11 March</p> <p>17 Sep</p>
<p>Ms T le Roux</p> <ul style="list-style-type: none"> - Hearing loss and its comorbidities 	<p>Talk presented at Information Day, Carel du Toit Centre, Tygerberg</p>	<p>6 Sep</p>

Ms H Mapisa - Expansion of Vocabulary	Talk presented to teachers, occupational - and physiotherapists at Alma School	26 Aug
Mr K Schoeman - Raising community awareness for persons with Down syndrome	Played the character of Kosie, delivery man for the butcher in the soapie, Sewende Laan, on SABC 2	2013
Ms A Stipinovich - Fronto-limbic injury and communicative effectiveness	Talk presented at an adult neurology multi-disciplinary workshop hosted by the South African Neurodevelopmental Therapy Society (SANDTA) in Pretoria	11 May
Ms E Strasheim - Communication disorders associated with cleft lip and palate	Talk at FCDC, University of Pretoria, Prinshof Campus	18 Oct
Prof. DCD Swanepoel - Help at hand for the deaf - You may not want to hear it, but sooner is better - Early screening vital in helping the deaf - 20Q with Gus Mueller - Hearing loss	Newspaper articles for Deaf Awareness Month Online questions Radio interview on Classic FM	Sep 27 Aug
Prof. BHME Vinck - Beeld newspaper article	Gehoorskade sluip stil-stil in	19 June
Ms UL Zsilavec - Coordinator of UP Speakeasy Support Group for people who Stutter - 'n Lewe met Hakkel - Hakkel - International Stuttering Awareness Day, "What is Stuttering"	Department of Speech-Language Pathology and Audiology KYKNET TV programme with Dr Franco Colin Short article in the Volksblad, Cape Town, with Reginald Witbooi Radio interview with Karen Key on SAfm	8 meetings 20 Aug 5 Sep 22 Oct

8. SPECIALIST CLINIC: CLINIC FOR HIGH-RISK BABIES (CHRIB)

Table 8.1: CHRIB student training and client profile in 2013

Description of activities and client characteristics		Number
Undergraduate student training	BCommunication Pathology IV (Intensive training)	62
	BCommunication Pathology III	58
	BCommunication Pathology II	61
	BCommunication Pathology I	72
	MChB III	60
	BOccupational Therapy II	25
Postgraduate student training	MEducational Psychology final year	14
	MECI II (ODL)	2
Assessments (n=66): Parents and young children	Initial assessments	45
	Re-assessments	21
<ul style="list-style-type: none"> - Number of families who received intervention at CHRIB - Average age of clients - Age range 		34 34 months 10-61months
Different developmental conditions in the clients (n=66)	Cleft lip and/or palate, including Pierre Robin sequence and van der Woude syndrome	1
	Suspected autism spectrum disorder	11
	Delayed speech and language development	11
	Developmental delay	7
	Down syndrome	7
	Twins and delayed communication development	4
	Foetal alcohol spectrum disorder	2
	Visual impairment	2
	ADHD	2
	Other conditions: Auditory neuropathy spectrum disorder, Apraxia of speech, Developmental phonological disorder	3
Geographical distribution of client families (n=66)	Pretoria and surrounding areas	40
	Centurion	11
	Gauteng	10
	Mpumalanga	1
	Limpopo	2
	North West	2
Home language diversity of client families (n=66)	Afrikaans	41
	English	11
	Setswana	7
	IsiZulu	2
	Xitsonga	2
	Shona, Amhari, German	3

9. UNIVERSITY OF PRETORIA COCHLEAR IMPLANT UNIT (UP-CIU) 2013

Team Members

Chairman: Prof. BHME Vinck, chairman of UP-CIU

Co-ordinator: Ms Nicolize Cass

Medical: The pre-operative evaluations, surgery, post-operative care and management are performed by: Dr ECM Burden (Private) and Dr AJ Smit (Private).

Psychology: Ms T van Huyssteen is responsible for the pre-operative evaluations as well as pre- and post-operative counselling.

Audiology and Speech-Language Pathology:

- Ms N Cass: Unit co-ordinator, pre-operative evaluation and counselling, programming (mapping) of speech processors, intra-operative testing and post-operative measurements.
-
- Ms T le Roux: Pre-operative evaluation and counselling, programming (mapping) of speech processors, intra-operative testing and post-operative measurements. Management and supervision of speech therapy and auditory training, student training and research (under- and postgraduate students).
-
- Dr ME Soer: Head of Audiology Division in the Department of Communication Pathology – offers support in clinical meetings and the functioning of the Unit within the Department.
- Ms M Beukes: Joined the UP-CIU in a private capacity. She is involved in pre-operative evaluation and counselling, programming (mapping) of speech processors, intra-operative testing and post-operative measurements.
-
- Ms T van Zyl: Joined the UP-CIU in a private capacity. She is involved in pre-operative evaluation and counselling, programming (mapping) of speech processors, intra-operative testing and post-operative measurements.
-
- Ms J Barnard: Auditory rehabilitation and programming of speech processors of young children and school-going children at the satellite centre.
-
- Ms K Weinmann: Pre-operative and post-operative speech and language assessments of adults and children. Auditory rehabilitation, post-operatively, of adults and children is also performed as well as Auditory Verbal Therapy.
-
- Ms M Barnes: Pre-operative and post-operative speech and language assessments of adults. Auditory rehabilitation of adults.
-
- Ms L Spies: Pre-operative and post-operative speech and language assessments of adults. Auditory rehabilitation of adults.
-
- Ms B Schmid: Pre-operative and post-operative parental guidance. Auditory rehabilitation of young children pre-operatively and post-operatively is also performed as well as Auditory Verbal Therapy. Support to cochlear implant users in the mainstream educational environment is also provided.

Bio-Engineering Prof. J Hanekom is responsible for research on cochlear implants from an engineering perspective.

The team is supported by Ms E Zybrands, the administrative assistant.

Services Rendered: 2013

- **Evaluations performed and outcomes:**

During 2013, a total number of 34 new patients were evaluated by the UP-CIU as potential cochlear implant candidates. Of those evaluated, 14 patients were children and 20 patients were adults. Four children were rejected as candidates.

- **Implants performed and patient statistics:**

A total number of 62 implant operations were performed by the UP-CIU during 2013. The following table is an analysis of those implants.

Table 9.1: Cochlear implants performed and patient statistics 2013 at the University of Pretoria

	Adults	Children
Total number of patients implanted in 2013	25*	34*
Number of bilateral implants	18	22
Patients from other programs	21	12
Total number of patients evaluated	14	20
Total number of devices upgraded in 2013	38	20
Number of explants and re-implants	3	2

* Bilateral implants included

The majority of the recipients were implanted with the Nucleus Freedom CI24RE(CA) cochlear implant systems from Cochlear Corporation. One adult patient was implanted with the Sonata i100 Standard electrode from MedEL.

10. INTERNATIONAL VISITS, VISITORS AND COLLABORATION

Table 10.1: International visits by members of staff during 2013

Visitor	Institution	Date
Dr G Goldblum	- <i>Adler Aphasia Center, New Jersey, USA</i>	19 June
	- <i>Snyder Center for Aphasia Life Enhancement, Baltimore, USA</i>	27 & 28 June
	- Visit with Professors Janet Patterson and Ellen Bernstein-Ellis, <i>Aphasia Treatment Program, California State University, East Bay, USA</i>	12 July
Prof. DCD Swanepoel	- Visit to Ear Science Institute Australia & The University of Western Australia, Perth	27 June to 12 July

Table 10.2: International visitors received in 2013

Country	Visitors received	Institution/s name/s	Purpose
UK	Prof. John Bamford	University of Manchester	Collaboration for teaching initiative in African countries
USA	Prof. Jackie Clark	University of Texas at Dallas	Course on ear canal management
Belgium	Prof. Paul Corthals	Audiology Department, Ghent University	Workshop presentation
UK	Ms Laura Dixon	Cochlear	Visit UP-CIU

Australia	Prof. Robert Eikelboom	University of West Australia	Course on telehealth, Research collaboration, joint writing on several manuscripts, postgraduate student supervision
USA	Dr DL Kendall	Associate Professor Speech and Hearing Sciences, University of Washington, Seattle, WA	Fullbright Scholarship awarded for 6 months to conduct research in the Department of Speech-Language Pathology and Audiology, UP
Sweden	Prof. Claude Laurent	University of Umea, Sweden	Course on ear canal management, research supervision of postgraduate students
Sweden	Dr Thorbjorn Lundberg	University of Umea, Sweden	Research collaboration and completion of two joint manuscripts
Belgium	Dr Leen Maes	ENT Department, Ghent University	Workshop presentation
Belgium	Prof. Jan van Borsel	Audiology Department, Ghent University	Workshop presentation and research collaboration
Belgium	Dr Astrid van Wieringen	ExpORL Department Neurosciences, Katolieke Universiteit Leuven	Workshop presentation and research collaboration