

Fakulteit Geesteswetenskappe
Faculty of Humanities

Department of Communication Pathology
Established in 1959

ANNUAL REPORT 2010

**Editors: Dr Maggi Soer
Prof. Alta Kritzinger
Co-workers: Departmental staff**



UNIVERSITEIT VAN PRETORIA
UNIVERSITY OF PRETORIA
YUNIBESITHI YA PRETORIA

Denkeleers • Leading Minds • Dikgopolo tša Dihlalefi

TABLE OF CONTENTS

	PAGE
1. THE YEAR 2010 IN RETROSPECT	1
2. DEPARTMENTAL MANAGEMENT STRUCTURE	2
3. DEPARTMENTAL STAFF	3
• Achievements by staff members	3
• Staff serving membership: Committees of the University of Pretoria	4
• Staff serving membership: Committees, associations, boards, councils and task groups	5
4. STUDENTS DEMOGRAPHICS AND ACHIEVEMENTS	6
• Undergraduate students	6
• Advanced Diploma in Hearing Aid Acoustics	7
• M Communication Pathology students	7
• Doctoral students	7
• Achievements by students	7
5. TEACHING AND LEARNING	8
• Clinical contexts utilized for student training	8
6. RESEARCH	9
• Refereed articles by staff members in accredited journals	9
• Non-accredited, peer-reviewed articles published by staff members	9
• International conference papers by staff members	10
• Papers delivered by staff members at national conferences	10
• International and national conference posters by staff members	12
• Research reports by final year students	12
• Postgraduate research: M Communication Pathology dissertations	13
• Doctoral research	14
7. COMMUNITY ENGAGEMENT	14
• Continuous professional development seminars presented by the Department of Communication Pathology	14
• Community engagement activities undertaken by staff members	15
8. SPECIALIST CENTRE	16
• PPS-CHRIB	16
9. PRETORIA COCHLEAR IMPLANT PROGRAMME (PCIP)	17
10. INTERNATIONAL VISITS, VISITORS AND COLLABORATION	17
• International visitors	17
• International visits by staff members	17
11. ACKNOWLEDGEMENTS	18

1. THE YEAR 2010 IN RETROSPECT

The year 2010 was an exciting and challenging year for the Department of Communication Pathology. It was the second year of implementation of the new curriculum and the staff members looked forward to the appointment of a new head of the Department. It was only towards the end of the year that the announcement came that Prof. Bart Vinck of the Gent University Hospital In Belgium has been appointed as new head of the Department as from 1 January 2011. Prof. Vinck was not an unfamiliar person to the staff, as he visited the Department twice during 2010 and was an extraordinary professor of the Department since 2004.

It was also with sadness that we received the resignation of Dr Catherine van Dijk, who was a senior lecturer and audiologist of the Department for six years, since 1 August 2004. She was also a valuable member of the Pretoria Cochlear Implant Programme and her resignation caused quite a number of obstacles, especially for the audiology staff members.

A number of successful workshops and CPD activities were presented by the Department, such as the Annual CHRIB seminar on a shared role for Audiologists and Speech-Language Therapists; New Developments in hearing aids and assessment by Prof. Robert Sweetow from the Department of Otolaryngology, University of California, San Fransisco. His visit was sponsored by Widex. A workshop on Vestibular Assessment and Rehabilitation was presented by Prof. Bart Vinck and a workshop on Tinnitus was presented by Mirella Horiuti from Brazil. Prof. Claude Laurent, an ear, nose and throat surgeon from the Riks University Hospital in Oslo Norway, visited the Department to follow up on the collaboration and establishment of the tele-audiology service for the Kenya Ear Foundation in Nyeri and Koplou Mission Hospitals.

The research output by the staff during 2010 confirms that the Department remained committed to its vision by training Speech-Language Therapists and Audiologists of excellence; by excellence in research activities; by meeting the needs of the South African population; by transformation; and, finally, by developing and maintaining multi-level partnerships.

The 2010 annual report provides an overview of the Department's teaching and learning, research and community engagement activities. These activities benefited individuals with communication disorders, the University as an institution and the community at large.

Dr Maggi Soer
ACTING HEAD: DEPARTMENT OF COMMUNICATION PATHOLOGY

2. DEPARTMENTAL MANAGEMENT STRUCTURE

The participatory management structure of the department is illustrated in Figure 2.1. All members of staff share responsibility for the effective functioning of the department as each has a designated function within the structure.

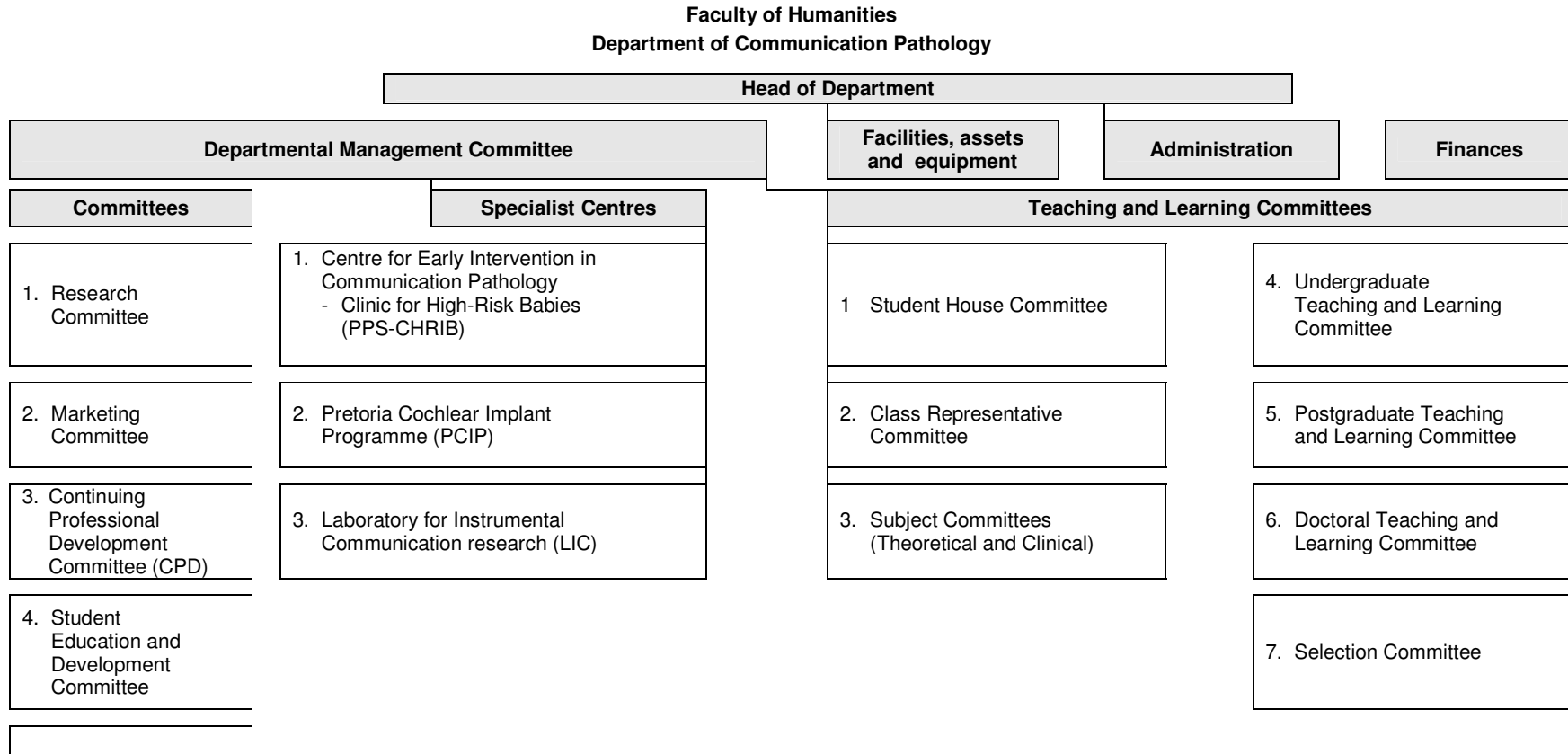


Figure 2.1: Departmental management structure

3. DEPARTMENTAL STAFF

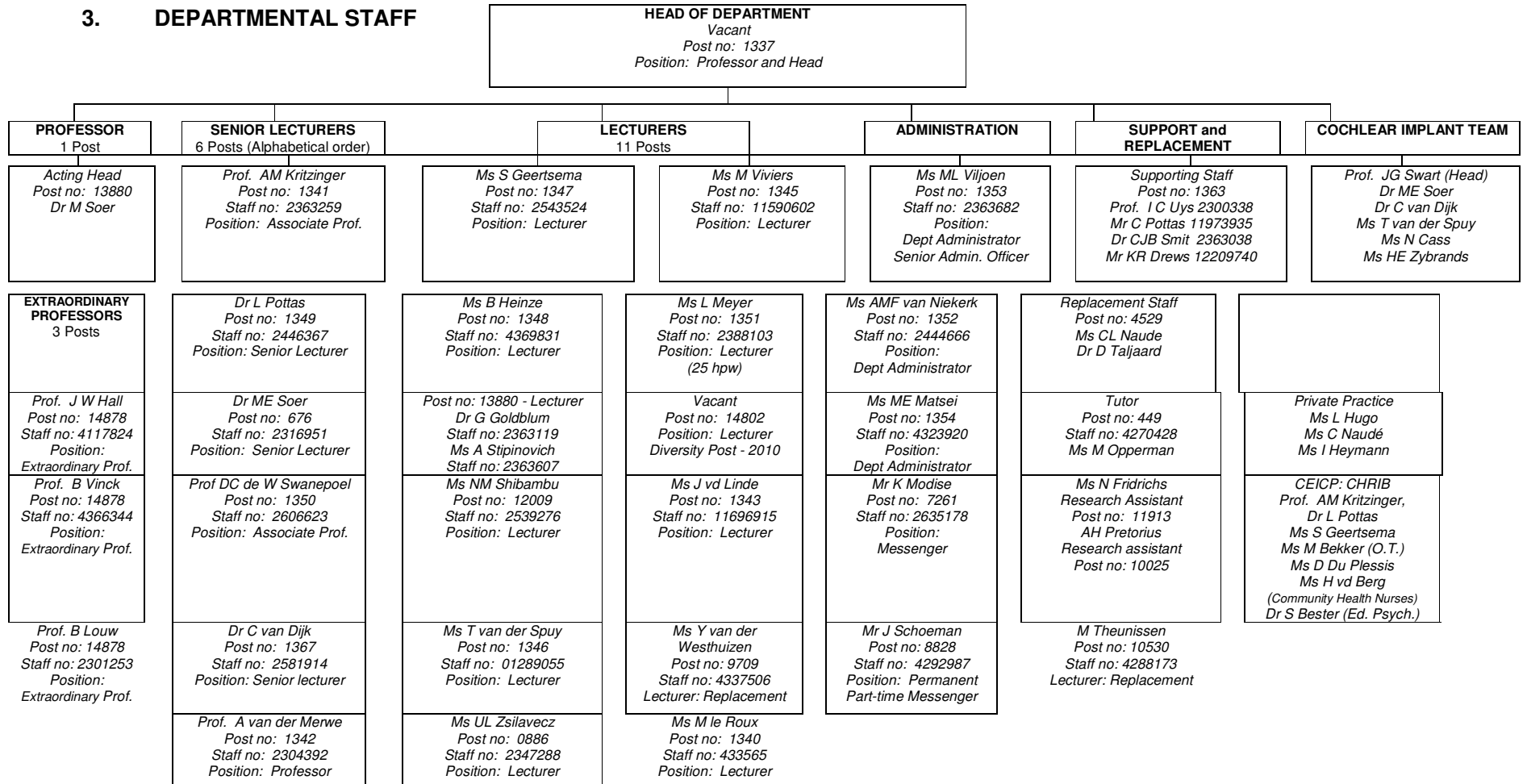


Figure 3.1: Department of Communication Pathology: Staff complement 2010

Departmental staff



- Front:** Mr Kosie Schoeman, Prof. Alta Kritzinger, Dr Maggi Soer, Prof. Anita van der Merwe, Ms Ursula Zsilavec
- Middle:** Ms Ria Viljoen, Ms Talita le Roux, Ms Elize Zybrands, Dr Lidia Pottas, Ms Maria Matome, Ms Mary Shibambu, Ms Jeannie van der Linde
- Back:** Ms Ansie van Niekerk, Ms Salomé Geertsema, Ms Nicolize Cass, Dr Catherine van Dijk, Ms Mia le Roux, Ms Mari de Beer, Ms Barbara Heinze, Mr Kgomotso Modise
- Absent:** Prof. De Wet Swanepoel, Dr Glenn Goldblum, Ms Lynette Meyer

Table 3.1: Major achievements by staff members

Staff member	Achievements
Dr G Goldblum	Invited to contribute to a Special Issue of Seminars in Speech and Language - serving as a tribute to the late Professor Mark Ylvisaker. Title: Mark Ylvisaker's influence on scripts, videos and projects within a South African context. <i>Seminars in Speech and Language</i> , 2010, Volume 31(3), 177-186.
Mr K Schoeman	" <i>n Lewe met Kosie Schoeman</i> " TV programme made about Kosie to promote public awareness of the active life-styles of adults with Down syndrome. Programme was screened on KYKNET during October
Prof. DCD Swanepoel	Received a President's Rating from the National Research Foundation (NRF P-rating) Voted in as a member of the executive committee of the International Society of Audiology – representative of the affiliated societies
Prof. B Vinck Extraordinary professor	Research by Prof. Vinck on the effectiveness of hearing protectors led to a new set of regulations adopted by the Belgian government to enforce quality control on all sold hearing protectors

Table 3.2: Staff serving membership: Committees of the University of Pretoria

Staff member	Committee	Portfolio
Prof. AM Kritzingner	<ul style="list-style-type: none"> Community Engagement Committee, Faculty of Humanities: 	<ul style="list-style-type: none"> Member
Ms M Shibambu	<ul style="list-style-type: none"> UPWO 	<ul style="list-style-type: none"> Faculty Representative
Prof. DCD Swanepoel	<ul style="list-style-type: none"> Postgraduate Research Committee, Faculty of Humanities 	<ul style="list-style-type: none"> Member
Prof. A van der Merwe	<ul style="list-style-type: none"> Research Committee: Faculty of Humanities Research Information System: Faculty of Humanities 	<ul style="list-style-type: none"> Member Faculty co-ordinator

Table 3.3: Staff serving membership: Committees, associations, boards, councils, task groups

Staff Member	Body	Appointed position
Prof. AM Kritzingner	South African Neonate, Infant and Toddler Support Association (SANITSA)	Board Member: Speech-Language Therapy
Dr L Pottas	South African Speech-Language and Hearing Association (SASLHA)	Member: Ethics and Standards Committee
Dr ME Soer	HPCSA Professional Board for Speech, Language and Hearing Professions	Member: Standards Generating Body for Hearing Aid Acousticians
	Society of Hearing Aid Acousticians (SHAA)	Lifelong Honorary Member
	South African Speech-Language and Hearing Association (SASLHA)	Member: Ethics and Standards Committee
	South African Bureau of Standards	Member: Working Group 43, Acoustics
Prof. DCD Swanepoel	<ul style="list-style-type: none"> World Health Organization (WHO), International Classification of Functioning and Health (ICF) steering committee 	Member, representing Africa for the development of a Core Set of questions for classification of hearing impairment as a chronic health condition (2008 – 2011)
	<ul style="list-style-type: none"> International Society of Audiology panel on recommendations for Newborn Hearing Screening, since 2008 	Expert panel member
	<ul style="list-style-type: none"> Telehealth Committee of the International Society of Audiology (ISA), since 2009 	Chair
	<ul style="list-style-type: none"> Tele-Audiology Network (www.teleaudiology.org), since 2009 	Founding Member
	<ul style="list-style-type: none"> International Society of Audiology 	Executive Board Member representing affiliated societies, since 2010
Ms U Zsilavec	HPCSA Professional Board for Speech Language and Hearing Professions (January-May)	Member: Education Sub-committee
	Department of Health	Member: Inquiry of conduct Sub-committee Liaison re community service year

4. STUDENTS: DEMOGRAPHICS AND ACHIEVEMENTS

STUDENT DEMOGRAPHICS AS IN JULY 2010

SECTION A: UNDERGRADUATE:

Table 4.1: Demographics of students registered for B Communication Pathology: **Audiology**

YEAR	POPULATION GROUP				LANGUAGE					GENDER		TOTAL
	Black	Coloured	Indian	White	Afri-kaans	Set-wana	Isizulu	Eng-lish	Xit-songa	Female	Male	
First years	3	0	2	21	12	0	1	12	1	25	1	26
Second years	5	0	2	20	17	2	2	3	1	25	0	25

Table 4.2: Demographics of first year students registered for B Communication Pathology: **Speech-Language Pathology**

YEAR	POPULATION GROUP				LANGUAGE				GENDER		TOTAL
	Black	Coloured	Indian	White	Afrikaans	Sesotho	English	Sepedi	Female	Male	
First years	1	0	2	22	9	1	16	0	24	1	25
Second years	5	0	2	20	13	0	13	1	27	0	27

Table 4.3: Demographics of students in the second, third, and fourth year of B Communication Pathology

YEAR	POPULATION GROUP				LANGUAGE							GENDER		TOTAL PER YEAR GROUP	PROFESSION OF CHOICE		
	Black	Coloured	Indian	White	Afri-kaans	Set-swana	Ger-man	Siswati	Xit-songa	Se-sotho	Eng-lish	Female	Male		AUD	SLP	AUD+SLP
Second	2	0	0	0	0	0	0	1	0	1	0	2	0	2	0	0	2
Third	3	0	1	37	25	0	0	2	1		13	41	0	41	1	6	35
Fourth	2	1	2	32	26	1	1	1	0	0	7	36	0	36	3	4	29

SECTION B: POSTGRADUATE DIPLOMA:**Table 4.4: Demographics of students registered for the postgraduate Advanced Diploma in Hearing Aid Acoustics (ADHAA)**

YEAR	POPULATION GROUP				LANGUAGE		GENDER		TOTAL
	Black	Coloured	Indian	White	Afrikaans	English	Female	Male	
First	4	0	2	9	8	7	12	3	15
Second	2	1	1	8	4	8	5	7	12

SECTION C: POSTGRADUATE DEGREES:**Table 4.5: Number of registrations for postgraduate degree and preparatory courses**

COURSE	TOTAL
Master's Preparatory	13
M Communication Pathology	26
Doctoral Preparatory	5
D. Phil Communication Pathology	5

Table 4.6: Achievements by students in 2010

Name	Year of study	Achievement
Gail Jones	Final year undergraduate	SASLHA Prize – Best final year student in Audiology – Clinical R300.00 cash prize and certificate
Cornelia Semmelink	Final year undergraduate	Susan M Swart – Best final year student in Audiology – Academic R300.00 cash prize and certificate
Nadine Basson	Final year undergraduate	SASLHA Prize - Best final year student in Speech Pathology – Clinical R300.00 cash prize and certificate
Nadine Basson	Final year undergraduate	P. De V. Pienaar prize – Best final year student in Speech Pathology – Academic R300.00 cash prize and certificate
Engela Louw, Cornelia Semmelink, Corli Richard	Final year undergraduate	A.B. Clemons Award for best research project will remain a branded SASLHA gift with certificate, for each of the project participants
Silva Kuscke	Final year undergraduate	Primaria, Nerina residence
Ansunette Pelser	Final year undergraduate	Vice-primaria, Madelief residence
Christna van der Merwe	Final year undergraduate	Chair: Tuks Camerata

5. TEACHING AND LEARNING

Table 5.1: Clinical contexts utilized for student training during 2010

Clinical training sites	Corresponding module/s
1. Tertiary hospitals: Steve Biko Academic hospital, 1 Military hospital, Dr George Mukari hospital, Chris Hani Baragwanath hospital	KMP 381 ODL 482
2. Secondary level hospitals Thembisa, Rob Ferreira, Ermelo, Kalafong, Tswane District, Charlotte Maxeke, Witbank, Tambo Memorial	KMP 281 381, 482
3. Private hospitals Eugene Marais hospital, Femina hospital, Kloof hospital, Little Company of Mary hospital, Medforum hospital, Muelmed hospital	KMP 381, 483 ODL 382 SPP 482
4. Primary health care clinics Gateway hlinic in Hammanskraal	KMP 483
5. Specialized clinics/centres Facial Cleft Deformities Clinic, Pretoria Cochlear Implant Programme, Consultation Voice Clinic	KMP 110, 482 ODL 482 SPP 181, 210
6. Care centres Boikanyo Centre for children with multiple disabilities	KMP 483
7. Primary schools (9) Wespark Laerskool, Die Heuwel Laerskool, Genl. Nic Smit Laerskool, Jacaranda Primary School, Lindopark Primary School, Genl. Beyers Laerskool, Booyens Laerskool, Riviera Laerskool, Meyerspark Laerskool	KMP 120, 281 483 ODL 381, 481 SPP 281, 381, 382, 482
8. Special schools Sonitus School, Transoranje School, Unica School, New Hope School, Pretoria School, Eduplex, Carel du Toit Centre, Prospectus Novus Skool, Via Nova Skool	ODL 481, 482 SPP 481, 482
9. Nursery schools Beyers Bytjies, Small Talk, Kwaggasrand, Lethlebile Day Care Centre in Hammanskraal	KMP 120, 483 SPP 281, 381, 382
10. Support groups Conversation groups at Dept of Communication Pathology	SPP 482
11. Industries Volkswagen: Panel beaters and factories	ODL 281
12. Speech, Voice and Hearing Clinic, Dept of Communication Pathology	KMP 120, 210, 482 ODL 281, 382, 482 SPP 281, 381, 481, 482
13. PPS-CHRIB, Dept of Communication Pathology, UP	KMP 181, 210, 220, 482, SPP 381
14. Private audiology and speech-language therapy practices HASS, Mariet du Plooy, Hearing Innovations, and various other practices, depending on students' choice	KMP 210 ODL 381, 382
15. Parent organizations Down Syndrome Association of Tshwane	KMP 210
16. Homes for senior citizens Susan Strydom, Jaffa, Ons Tuis	SPP 482
17. Home-based care	SPP 482

6. RESEARCH

Table 6.1: Refereed articles by staff members in accredited journals (11)

Danermark, B., Cieza, A., Gange, J., Gimigliano, F., Granberg, S., Hickson, L., Kramer, S. E., McPherson, B., Möller, C., Russo, I., Strömngren, J. P., Stucki, G., & Swanepoel, D. (2010). International classification of functioning, disability, and health core sets for hearing loss: A discussion paper and invitation. <i>International Journal of Audiology</i> , 49: 256-62.
De Beer, M., Kritzing, A., & Zsilavec, U. (2010). Young children with fetal alcohol spectrum disorder – communication profiles. <i>South African Journal of Communication Disorders</i> , 57, 33-42.
Heinze, B., Swanepoel, D., & Hofmeyr, L. M. (2010). A systematic review of HIV/AIDS related vestibular disorders. <i>Journal of Laryngology and Otology</i> , In Press.
Pienaar, E., Stearn, N., & Swanepoel, D. (2010). Self-reported outcomes of aural rehabilitation for adult hearing aid users in a South African context. <i>South African Journal of Communication Disorders</i> , 57, 1-6.
Swanepoel, D., Clark, J.L., Koekemoer, D., Krumm, M., Ferrari, D. V., McPherson, B., Olusanya, B. O., Mars, M., Russo, I., & Barajas, J. J. (2010). Telehealth in audiology: The need and potential to reach underserved communities. <i>International Journal of Audiology</i> , 49:195-202.
Swanepoel, D., Olusanya, B. O., & Mars, M. (2010). Hearing health-care delivery in sub-Saharan Africa – a role for tele-audiology. <i>Journal of Telemedicine and Telecare</i> , 16:53-56.
Swanepoel, D. C. D., & Hall, J. W. III. (2010). Football match spectator sound exposure and effect on hearing: A pretest-posttest study. <i>South African Medical Journal</i> , 100(4): 239-242.
Swanepoel, D., Clark, J., & Koekemoer, D. (2010). Intercontinental hearing assessment – a study in tele-audiology. <i>Journal of Telemedicine and Telecare</i> , 16:248-252.
Swanepoel, D., Mngemane, S., Molemong, S., Mkwanazi, H., & Tutshini, M. (2010). Hearing assessment – reliability, accuracy, and efficiency of automated audiometry. <i>Telemedicine and e-Health</i> , 16(5):557-563.
Swanepoel, D., & Hall, J. W. III. (2010). A systematic review of telehealth applications in audiology. <i>Telemedicine and e-Health</i> , 16(2):181-200.
Wium, A-M., Louw, B., & Eloff, I. (2010). Speech-language therapists supporting foundation phase teachers with literacy and numeracy in a rural township context. <i>South African Journal of Communication Disorders</i> , 57, 14-21.

Table 6.2: Non-accredited, peer-reviewed articles published by staff (6)

Goldblum, G. (2010). Mark Ilvisaker's influence on scripts, video's and projects within a South African context. <i>Seminars in Speech and Language</i> , 31(3):177-186.
Gopal, R., Louw, B., & Kritzing, A. (2010). Speech assessment material for young children with cleft lip and/or palate. <i>Journal of the Indian Speech and Hearing Association</i> , 24(1):24-38.
Hofmeyr, L. M., Heinze, B., & Swanepoel, D. (2010). HIV/AIDS vestibular disorders. <i>The Specialist Forum</i> , 10(8): 16-21.
Swanepoel, D. (2010). Providing remote hearing health care. <i>Audiology Today</i> , March/April, 39-45.
Swanepoel, D., Hall, J.W. III., & Koekemoer, D. (2010). Vuvuzela sound measurements. Correspondence. <i>South African Medical Journal</i> , 100(4):192.
Swanepoel, D., Hall, J.W. III., & Koekemoer, D. (2010). Vuvuzela – good for your team, bad for your ears. <i>South African Medical Journal</i> , 100(2):99-100.

Table 6.3: International conference papers by staff members

Conference Name	Presentation Title	Presenter/s
International Pediatric Audiology Conference Chicago, USA 8-10 November	Opening address: Infant hearing loss in developing countries: A silent epidemic	Swanepoel DCD
	A sound foundation through early amplification	Swanepoel DCD
ICA 2010 XXXth International Congress of Audiology Sao Paulo, Brazil 28 March-2 April	Round Table Discussion: Hearing health care and latest technologies	McPherson D Swanepoel DCD
	Round table discussion: Globalization of standards and education in audiology	Swanepoel DCD
	Grand Round: Tele-Audiology	Swanepoel DCD
Newborn Hearing Screening 2010 Beyond Newborn Hearing Screening Infant and Childhood Hearing in Science and Clinical Practice Cernobbio, Como Lake, Italy 8-10 June	Parental perceptions of the social well-being of school-going children with cochlear Implants: A comparative study	Van der Spuy T Loots TE Pieters J
	Prioritizing 'Developing EHDl' systems: A Global Priority	Swanepoel DCD Storbeck C
	Early detection and intervention for infant hearing loss in South Africa	Swanepoel DCD Storbeck C
	Community-based infant hearing screening in South Africa: Preliminary findings	Friderichs N Swanepoel DCD

Table 6.4: Papers delivered by staff members at national conferences

Authors	Title of paper	Conference name	City	Date
Ms S Geertsema	Assessment checklists for children with autism spectrum disorder	The 2010 CHRIB Seminar Early Communication Intervention: A shared role for audiologists and speech-language therapists	UP, Pretoria	4 September
Ms B Heinze	Management of ototoxic chemotherapy: Perceptions of oncologists and audiologists in private practice	SASLHA Conference New perspectives on our professions	Eduplex Pretoria	19 April
Ms B Heinze	Childhood ototoxicity: Implications for ECI	The 2010 CHRIB Seminar	UP, Pretoria	4 September
Ms B Heinze	Tinnitus service delivery in the South African context	46 th Congress of the South African Society of Otorhinolaryngology,	Drakensberg	24-27 October

Authors	Title of paper	Conference name	City	Date
		Head and Neck Surgery in Association with the South African Association of Audiologists & South African Head and Neck Oncology Society		
Prof. AM Kritzinger	Sensory regulation knowledge for ECI	The 2010 CHRIB Seminar	UP, Pretoria	4 September
Dr L Pottas	Ethical considerations in your ECI practice	The 2010 CHRIB Seminar	UP, Pretoria	4 September
Dr M Soer	Cross-referrals between audiologists and speech-language therapists in ECI	The 2010 CHRIB Seminar	UP, Pretoria	4 September
Prof. DCD Swanepoel	Infant hearing loss in developing countries - exposing a silent epidemic	The 2010 CHRIB Seminar	UP, Pretoria	4 September
Prof. DCD Swanepoel	The auditory steady-state response in pediatric audiology	Widex Congress of Paediatric Audiology	UP, Pretoria	13-15 May
Prof. A van der Merwe	A brain-behaviour model of speech motor control: Concepts, questions and research	Neuroscience Day	UP, Pretoria	26 May
Prof. A van der Merwe Dr JG Killian	Paradoxical vocal fold motion and asthma: Co-occurrence, nature of disorder and treatment	46 th Congress of the South African Society of Otorhinolaryngology, Head and Neck Surgery in Association with the South African Association of Audiologists & South African Head and Neck Oncology Society	Drakensberg	24-27 October
Ms TE van der Spuy	The multidisciplinary challenge of auditory neuropathy spectrum disorder	SASLHA Conference New perspectives on our professions	Eduplex Pretoria	19 April
Ms M Viviers	Communication profiles of a small group of young children (0-5 years) with foetal alcohol spectrum disorder	SASLHA Conference New perspectives on our professions	Eduplex, Pretoria	19 April
Ms M Viviers	Communication Profiles of a small group of young children (0-5 years) with Foetal Alcohol Spectrum Disorders	Pan-African Early Childhood Development Conference	Cape Town	29 September
Ms M Viviers	Clinical assessment of paediatric dysphagia	The 2010 CHRIB Seminar	UP, Pretoria	4 September
Ms U Zsilavec	New perspectives on stuttering intervention	SASLHA Conference New perspectives on our professions	Eduplex, Pretoria	19 April

Table 6.5: International and national conference posters by staff members

Authors	Title of poster	Conference and city	Country	Date
S Glista J Patterson R Pollens G Goldblum E Bernstein-Ellis	Cybersafety: Educating individuals with aphasia or cognitive- communication disorders .	ASHA Convention Philadelphia	USA	November
S Kola K Smith M Shibambu B Louw	Parental perceptions of cleft lip and palate information sharing sessions at FCDC	67 th American Cleft Palate Cleft Palate–Craniofacial Association Meeting	Fort Worth, Texas	15-20 March
TE van der Spuy	Early Intervention for children with auditory neuropathy spectrum disorder in a developing country	Newborn Hearing Screening Cernobbio, Como Lake	Italy	8-10 June
E Strasheim B Louw A Kritzinger	Meeting the needs of our youngest clients: Neonatal communication intervention program for South African parents	ASHA Convention Philadelphia	USA	November

Table 6.6: Research reports by final year students

Students	Title	Supervisors
Andrea Abendroth Heather Nicholson	1. The outcomes of a phonological planning approach to the treatment of a bilingual individual with phonemic paraphasia an aphasia	Prof. A van der Merwe
Nadia Coetzer Ansunette Pelsler	2. Temporal speech characteristics of individuals with motor speech disorders: a comparative study	Prof. A van der Merwe
Sulize Venter Ingrid Wassenaar	3. Caregiver perceptions of emergent literacy development and practices in preschool children from families with limited resources	Prof. AM Kritzinger
Danél Erasmus Leani Schutte Melissa van der Merwe	4. Speech-language therapy to adolescents with written language dissabilities: Current practice, perceptions and needs regarding training in the South African context	Ms S Geertsema
Silva Kuschke Therese Marais Christina van der Merwe	5. Speech reception thresholds in english additional language speakers: Digits versus spondaic words	Dr C van Dijk
Gail Jones Marlize Nieuwoudt Elizca Spies	6. The incidence and percieved handicap of vestibular symptoms among workers exposed to continous industrial noise	Ms B Heinze Co-supervisor: Dr L Pottas
Ilze Gadd Marli van Niekerk	7. Audiologists' perceived competence in identifying vestibular disorders and performing bed-side assessments	Ms B Heinze Co-supervisor: Dr L Pottas
Nadine Basson Jessica Freeman	8. The effect of regular personal music device use on the oto-acoustic emissions of young adults	Dr M Soer Co-supervisor: Ms M le Roux
Aadila Mahomed Faheema Mahomed	9. The effect of using an introductory sentence on speech discrimination results	Dr M Soer
Gabrielle Cloete	10. The audiologists' perceived competence in	Ms B Heinze

Students	Title	Supervisors
Alida Visagie	tinnitus service delivery	Co-supervisor: Dr L Pottas
Engela Louw Corli Richard Cornelia Semmelink	11. A clinical profile of a group of young children with auditory neuropathy	Ms T le Roux
Elfriede Röhrs Tamara Simpson	12. The communication profile and progress of a young child diagnosed with ANSD: A single case study	Ms T le Roux
Estienne Havenga Jolinda van Heerden	13. The outcomes of preverbal late implanted cochlear implant recipients: Parental perceptions	Ms T le Roux
Sixolelwe Hlatshwayo	14. A preliminary translation of the Fluharty-2 Speech and Language Screening Test into isiZulu	Ms U Zsilavec Co-supervisor: Ms S Geertsema
Melissa Berry Elizeth Coetzer	15. Child rearing priorities of African language-speaking families with young children	Prof. AM Kritzinger
Refilwe Morwane Judy Hartzenberg	16. Gaps-in-noise thresholds in normal hearing young South African adults	Dr L Pottas

Table 6.7: Postgraduate research: M Communication Pathology dissertations

Student	Title	Supervisors
1. Jacoby KL	Dissertation: Pragmatic language ability in a group of adolescents with traumatic brain injury	Supervisor: Ms AM Stipinovich Co-supervisor: Dr G Goldblum External examiner: Ms D Jones (private practice)
2. Pillay D	Dissertation: Geriatric audiology: Clients' perspective of service delivery in an affluent, urban area in South Africa	Supervisor: Dr L Pottas Co-supervisor: Ms T van der Spuy External examiner: Ms A Visser (University of Limpopo)
3. Strasheim E	Dissertation: The development of a neonatal communication intervention tool	Supervisor: Prof. B Louw Co-supervisor: Prof. AM Kritzinger External examiner: Prof. S du Plessis (University of Limpopo)
4. Swiegers D	Dissertation: Development of a perceptual speech assessment protocol for Zulu-speaking children with cleft palate	Supervisor: Prof. B Louw Co-supervisor: Prof. AM Kritzinger External examiner: Ms H Jordaan (University of the Witwatersrand)

Table 6.8: Doctoral research completed

Candidate	Title	Promotor/s and examiners
Marx EMM	Thesis: The ability of adolescents with hearing loss in special schools to access and use academic information.	Promotor: Dr ME Soer Co-promotor: Prof. AL Dick External examiners: Prof. C de Conde-Johnson (University of Colorado, USA) Prof. J Henning (UNISA)
Wium AM	Thesis: A support programme for foundation phase educators to facilitate the development of listening and language in numeracy	Promotor: Prof. B Louw Co-promotors: Prof. I Eloff (UP) Prof. P du Toit (North-West University) External examiner: Prof. RE Owens (New York State University, USA)
Gopal R	Thesis: Development of a communication assessment protocol for young children with cleft lip and/or palate (CL/P) in Mauritius	Promotor: Prof. B Louw Co-promotor: Prof. AM Kritzinger (UP) External examiners: Prof. DP Kuehn (University of Illinois at Urbana-Champaign, USA) Prof. JE Troste-Cardamone (California State University Northridge, USA)

7. COMMUNITY ENGAGEMENT

Table 7.1: Continuous professional development seminars presented by the Department of Communication Pathology during 2010

Topic	Date	Presenters	Number of attendees
1. Annual CHRIB Seminar Early Communication Intervention: A shared role for audiologists and speech-language therapists	4 Sep	Dr M Soer, Dr L Pottas, Ms S Geertsema, Prof. DCD Swanepoel, Ms M Viviers, Ms B Heinze, Prof. AM Kritzinger	63
2. Learning and motor learning during speech, language, and voice intervention	26 Aug	Prof. A van der merwe	11
3. Tinnitus and patient management	19 Oct	Prof. R Sweetow (USA)	100
4. Right hemisphere syndrome	21 Oct	Ms AM Stipinovich	7
5. Is stuttering, stuttering?	25 Nov	Ms U Zsilavec	8
6. Vestibular assessment and rehabilitation	5 March	Prof. B Vinck (Belgium)	80

Table 7.2: Community engagement activities undertaken by staff members

Member/s of staff and presentation	Organisation and location	Date
Dr G Goldblum - Coordinator: Conversational groups for individuals with aphasia and cognitive communication disorders - Open evening for Conversational Groups	Dept of Communication Pathology Conference Centre, UP	Weekly meetings 14 Oct
Prof. AM Kritzinger - Talk: A neonatal communication intervention programme - Participated in the TV programme: "n Lewe met Kosie Schoeman" - Talk: Screening and early identification of communication disorders - Talk: Clinical tools for early communication screening and assessment	Speech and Hearing Dept, Charlotte Maxeke Hospital Johannesburg KYKNET TV viewers Early Intervention Course Itesi, Brits Speech and Hearing Dept, Steve Biko Academic Hospital, Pretoria	14 July July 13 Aug 17 Sep
Ms M Shibambu - Consultant at the Special Olympics for hearing screening of children with cognitive impairment	Lucas van den Berg Sport Grounds, Pretoria	11 Sep
Prof. DCD Swanepoel - Seminar on HIV/AIDS related auditory disorders	Nurses at the Witkoppen Primary Health Care Clinic	27 Oct

8. SPECIALIST CENTRE: PPS-CHRIB

Table 8.1: PPS-CHRIB student training and client profile in 2010

Student training	Students / Clients
Undergraduate student training <ul style="list-style-type: none"> • B Communication Pathology IV (Intensive training) • B Communication Pathology III • B Communication Pathology II • B Communication Pathology I • MChB II 	38 44 46 51 70
Postgraduate student training <ul style="list-style-type: none"> • M Educational Psychology • M ECI • Nursing students 	11 5 2 Total: 253
Number of assessments: Parents with young children <ul style="list-style-type: none"> • First assessments • Re-assessments 	53 22 Total: 75
Number of families who received early communication intervention with final year students at the Department of Communication Pathology	41
Risk conditions in 75 clients <ul style="list-style-type: none"> • Slow expressive language development • Cleft lip and palate • Down syndrome • Suspected autism spectrum disorder • Auditory neuropathy spectrum disorder (3 re-assessments) • Developmental delay • Other risk conditions: Chromosomal disorder, CHARGE association, low birth weight and preterm birth, HIV exposed, regulatory disorder, otitis media • Normal development 	24 11 9 8 6 4 12 1 Total: 75
Geographical distribution of PPS-CHRIB clients <ul style="list-style-type: none"> • Pretoria and surrounding areas • Gauteng • KwaZulu Natal 	67 7 1 Total: 75
Language diversity of clients <ul style="list-style-type: none"> • Afrikaans • English • Tswana • Sepedi • Sesotho • Zulu • French 	53 11 4 2 2 2 1 Total: 75

9. THE PRETORIA COCHLEAR IMPLANT PROGRAMME (PCIP)

Table 9.1 Implants performed and patient statistics 2010

	Children	Adults
Total number of patients implanted in 2010	29*	11
Number of bilateral implants	5	2
Patients from other programs	7	14
Total number of patients evaluated	29	15
Total number of devices upgraded in 2009	16	15

* Bilateral implants included

10. INTERNATIONAL VISITS, VISITORS AND COLLABORATION

Table 10.1: International visitors received in 2010

Continent	Country	Visitors received (Inbound)	UP visitors abroad (outbound)	Institution/s name/s	Purpose
Europe	Belgium	2	Prof. B Vinck Ms Nathalie Vinck	University Hospital Ghent	Extraordinary professor: Discussions with staff members and postgraduate students
Europe	Norway	1	Prof. Claude Laurent	Riks University Hospital Oslo Norway	Discussions with members of staff on the collaboration of the Kenya Ear Foundation
USA	San Francisco	1	Prof. Sweetow	University of California	Workshops on: - Clinical management of tinnitus - New developments in hearing aids and assessment
Europe	Belgium	1	Prof. B Vinck	University Hospital Ghent	- Meetings with staff and Dean - Attending the annual departmental bosberaad

10. Acknowledgements

The Department of Communication Pathology's functioning and achievements would not have been possible without the leadership and support received on all levels during the course of 2010. The Department therefore gratefully acknowledges the valuable input of the following individuals: Prof. C de la Rey (Principal); Profs. R Crew, A Mogotlane and N Ogude (Vice Principals); Prof. N Grové (Registrar); Prof. S Klopper (Dean Faculty of Humanities); Prof. M Speckman (Student Dean); Profs. H Stander and J Sharp (Deputy Deans, Faculty of Humanities). The staff members of the various University Departments of support services, especially the Faculty of Humanities' Student Administration, the Faculty Management team and the Department of Statistics are sincerely thanked for enabling the Department to function effectively within the university structure.

The teaching input of a number of academic departments of the University to the courses B. Communication Pathology and M. Communication Pathology is highly valued and the Department extends its appreciation to the individual lecturers involved, as well as to their departments for facilitating this collaboration.

Finally the staff and students of the Department of Communication Pathology are thanked for their support during a trying year, their hard work and dedication to the Department, the University of Pretoria and the professions of Audiology and Speech-Language Pathology. I sincerely want to thank all staff members for their wonderful support and positive attitude during the past year that I was acting head of the Department.

Dr Maggi Soer
ACTING HEAD: DEPARTMENT OF COMMUNICATION PATHOLOGY