

Fakulteit Geesteswetenskappe
Faculty of Humanities

Department of Communication Pathology
Established in 1959

ANNUAL REPORT 2012

Editors: Prof. Bart Vinck
Prof. Alta Kritzinger
Co-workers: Departmental staff



UNIVERSITEIT VAN PRETORIA
UNIVERSITY OF PRETORIA
YUNIBESITHI YA PRETORIA

Denklelers • Leading Minds • Dikgopolo tša Dihlalefi

TABLE OF CONTENTS

	PAGE
1. THE YEAR 2012 IN RETROSPECT	3
2. DEPARTMENTAL MANAGEMENT STRUCTURE	4
3. DEPARTMENTAL STAFF	5
• Major achievements by staff members	6
• Staff serving membership: Committees of the University of Pretoria	7
• Staff serving membership: Committees, associations, boards, councils and task groups	7
4. STUDENTS DEMOGRAPHICS AND ACHIEVEMENTS	8
• Undergraduate students	9
• Advanced Diploma in Hearing Aid Acoustics	9
• Postgraduate degree students	9
• Through-put numbers of final year and postgraduate students	10
• Achievements by students	10
5. TEACHING AND LEARNING	11
• Clinical contexts utilized for student training	11
6. RESEARCH	11
• Peer-reviewed articles by staff members	12
• Chapter in a book by member of staff	12
• International conference papers by staff members	12
• Papers delivered by staff members at national conferences	13
• Papers delivered by staff members at regional seminars	14
• International and national conference posters by staff members	14
• Research reports by final year students	14
• Postgraduate research: MCommunication Pathology and DPhil	16
7. COMMUNITY ENGAGEMENT	16
• Continuous professional development seminars presented by the Department of Communication Pathology	16
• CPD-HOUR activities presented by the Department of Communication Pathology during 2012	17
• Department of Communication Pathology as continuous professional development accreditor during 2012	17
• Community engagement activities undertaken by staff members	18
8. SPECIALIST CLINIC: Clinic for High-Risk Babies (CHRIB)	19
9. UNIVERSITY OF PRETORIA COCHLEAR IMPLANT UNIT (UP-CIU)	20
10. INTERNATIONAL VISITS, VISITORS AND COLLABORATION	22
• International visits by members of staff	22
• International visitors	22

1. THE YEAR 2012 IN RETROSPECT

2012 was a year full of major events and activities. Prof. Sandra Klopper, the Dean of Humanities resigned at the end 2011 to commence a new position as Deputy Vice-Chancellor at the University of Cape Town. Prof. Hennie Stander took over as acting-Dean until the end of April 2012. Prof. Norman Duncan started his term as new Dean of our Humanities Faculty from 1 May.

The year was also the year of different quality assurance evaluations. The Department went through the HPCSA Inspection in May and a few months later through the External evaluation in September. Both evaluations went very well and we received the good news that both our programmes (Audiology and Speech-Language Pathology) are accredited.

In between these two evaluations we were also hosting a very successful Intervarsity meeting in August.

In addition to all that, several staff members also left the Department. Ms Mary Shibambu and Ms Mari Viviers left the Department because of new professional opportunities elsewhere.

It was a very busy, hectic and challenging year during my second year as Head of Department, but also a very succesful one. With the enormous efforts of all the academic staff and support staff we managed to increase our student numbers, the throughput, and the research output significantly. A new format for PhD and Masters programmes was established and the first students under the new format were graduating.

I am very proud to be the Head of this Department, a department full of motivated, wonderful academics and support staff. Together we stand strong, together we were and will play an important role in the strategic changes required by the University. For each of us a small step, but together a giant step forward for our professions.

Thank you to all of you !!

Yours sincerely

Professor Bart Vinck
HEAD: DEPARTMENT OF COMMUNICATION PATHOLOGY

2. DEPARTMENTAL MANAGEMENT STRUCTURE

The participatory management structure of the department is illustrated in Figure 2.1. All members of staff share responsibility for the effective functioning of the department as each has designated functions within the structure.

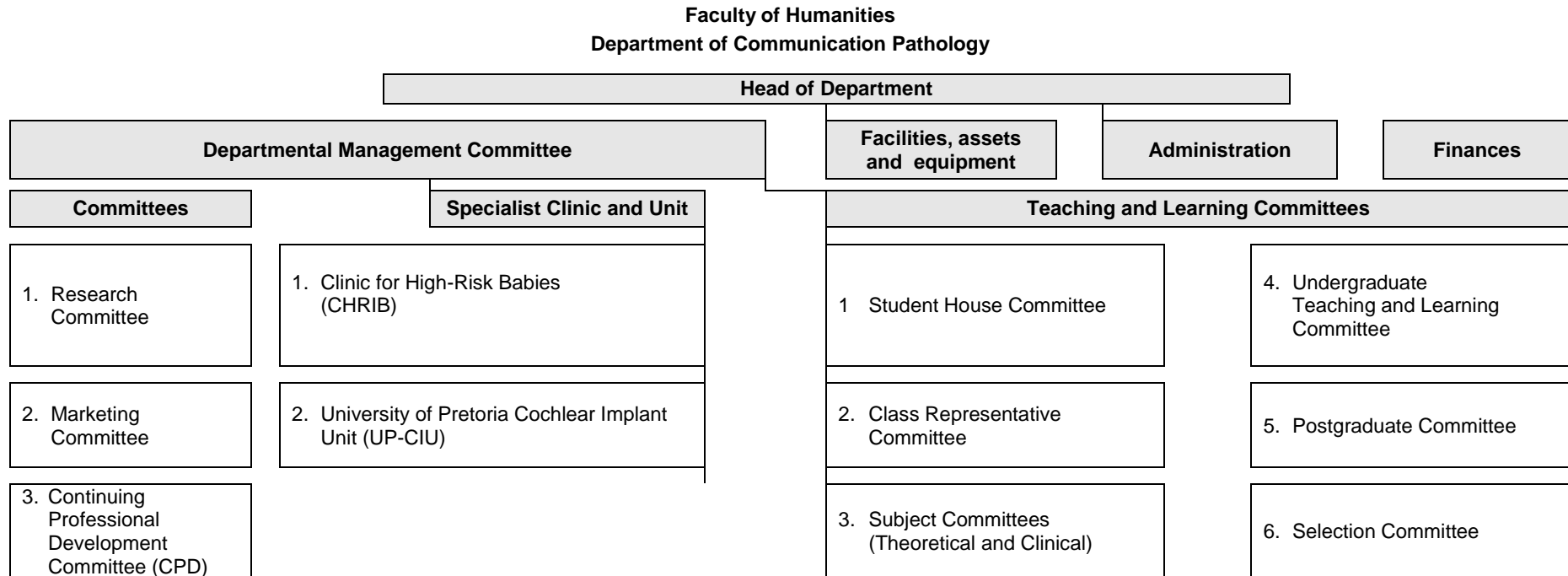


Figure 2.1: Departmental management structure

3. DEPARTMENTAL STAFF

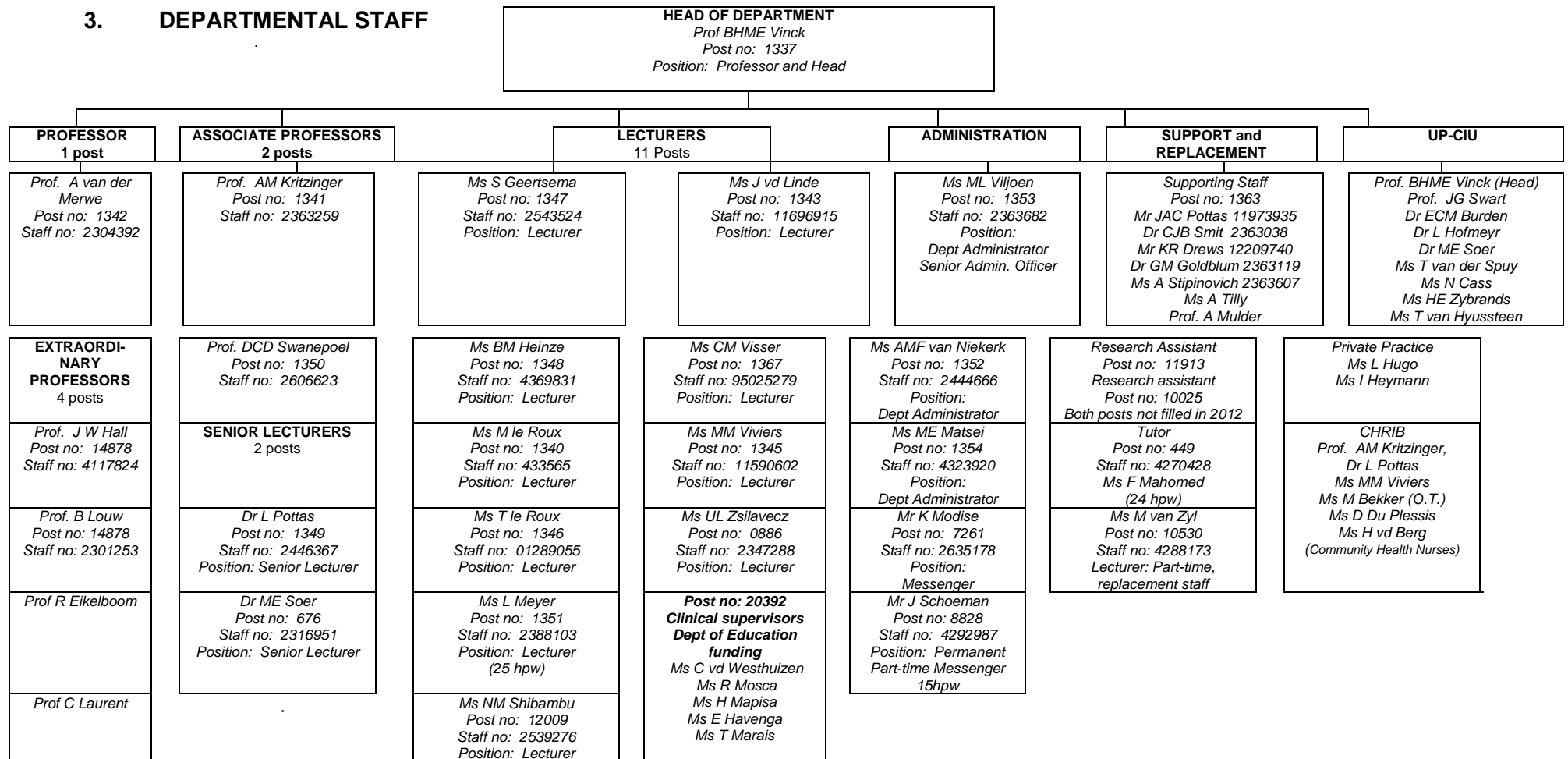


Figure 3.1: Department of Communication Pathology staff complement 2012

Departmental staff 2012



- Front:** Prof. DCD Swanepoel, Prof. R Eikelboom, Prof. C Laurent, Prof. BHME Vinck, Dr ME Soer, Prof. A van der Merwe, Prof. AM Kritzing, Ms UL Zsilavec
- 2nd row:** Ms C van der Westhuizen, Ms H Mapisa, Ms ME Matsei, Ms ML Viljoen, Dr GM Goldblum, Dr L Pottas, Ms N Cass, Ms E Zybrands
- 3rd row:** Ms S Geertsema, Ms M le Roux, Ms CM Visser, Ms L Hugo, Ms M van Zyl, Ms T le Roux,
- 4th row:** Ms AMF van Niekerk, Ms F Mahomed, Ms BM Heinze, Mr K Modise, Ms J van der Linde
- Absent:** Mr JJ Schoeman, Ms NM Shibambu, Ms MM Viviers, Ms L Meyer, Ms I Heymann, Ms R Mosca, Ms A Stipinovich, Ms N Sekwati, Ms T Marais, Ms E Havenga

Table 3.1: Major achievements by staff members

Staff member	Achievements
Ms BM Heinze	Awarded the "Best 2011 paper in the review category" by <i>The Journal of Laryngology and Otology</i> for doctoral thesis paper entitled, "A systematic review of HIV/AIDS-related vestibular disorders". The prize was awarded at a ceremony of the Royal Society of Medicine in London, UK, 3 May 2012
Prof. DCD Swanepoel	Awarded the "Best 2011 paper in the review category" by <i>The Journal of Laryngology and Otology</i> along with a doctoral student for a paper entitled, "A systematic review of HIV/AIDS-related vestibular disorders". The prize was awarded at a ceremony of the Royal Society of Medicine in London, UK, 3 May 2012

Table 3.2: Staff serving membership: Committees of the University of Pretoria

Staff member	Committee	Portfolio
Prof. AM Kritzinger	<ul style="list-style-type: none"> Community Engagement Committee: Faculty of Humanities Teaching and Learning Committee: Faculty of Humanities 	<ul style="list-style-type: none"> Member Member
Ms NM Shibambu	<ul style="list-style-type: none"> UPWO 	<ul style="list-style-type: none"> Faculty Representative
Prof. DCD Swanepoel	<ul style="list-style-type: none"> Postgraduate Research Committee: Faculty of Humanities 	<ul style="list-style-type: none"> Member
Prof. A van der Merwe	<ul style="list-style-type: none"> Research Committee: Faculty of Humanities Research Information System: Faculty of Humanities 	<ul style="list-style-type: none"> Member Faculty co-ordinator
Prof. BHME Vinck	<ul style="list-style-type: none"> Dean's Advisory Committee: Faculty of Humanities 	<ul style="list-style-type: none"> Member

Table 3.3: Staff serving membership: Committees, associations, boards, councils, task groups

Staff Member	Body	Appointed position
Ms S Geertsema	The National Red Apple Dyslexia Association	Appointed board member
Prof. AM Kritzinger	South African Neonate, Infant and Toddler Support Association (SANITSA)	Board Member: Speech-Language Therapy
	HPCSA, Professional Board for Speech, Language and Hearing Professions	Examiner to foreign graduates applying for registration
Dr L Pottas	South African Speech-Language and Hearing Association (SASLHA)	Member: Ethics and Standards Committee
Dr ME Soer	Society of Hearing Aid Acousticians (SHAA)	Lifelong Honorary Member
	South African Speech-Language and Hearing Association (SASLHA)	Member: Ethics and Standards Committee
	SAAA (South African Academy of Audiologists)	Adjudicator for annual Audiology Awards
	South African Bureau of Standards	Member: Working Group 43, Acoustics
Prof. DCD Swanepoel	World Health Organization (WHO), International Classification of Functioning and Health (ICF) steering committee	Member, representing Africa for the development of a Core Set of questions for classification of hearing impairment as a chronic health condition (2008 – 2011)
	International Society of Audiology (ISA)	Chair, Telehealth Committee
	International Society of Audiology (ISA)	Executive Board member, representative for affiliate societies
	South African Association for Audiology	Ethics committee member
Prof. A van der Merwe	HPCSA, Professional Board for Speech, Language and Hearing Professions	Examiner to foreign graduates applying for registration
Prof. BHME Vinck	HPCSA Professional Board for Speech, Language and Hearing Professions	Conducted a programme evaluation for accreditation
Ms UL Zsilavec	Department of Health	Liaison re community service year
	South African Speech-Language and Hearing Association (SASLHA)	Member: Ethics and Standards Committee

4. STUDENTS: DEMOGRAPHICS AND ACHIEVEMENTS 2012

SECTION A: UNDERGRADUATE

**Table 4.1: Demographics of students registered for BCommunication
Pathology: **Audiology 2012****

Academic level	01	02	03	FINAL
Population group				
Asian	4	1	3	2
Black	4	3	5	1
Coloured	1			
White	22	23	24	16
Language				
Afrikaans	13	17	16	14
Afrikaans/English	1		1	
English	11	8	10	4
German	2			
IsiZulu		1	3	
Sepedi	1	1		
Sesotho	1			
Setswana			1	
SiSwati	1			
Xitsonga	1		1	1
Gender				
Female	29	25	31	19
Male	2	2	1	
Total	31	27	32	19

Source: BIRAP, 2013

**Table 4.2: Demographics of students registered for BCommunication
Pathology: **Speech-Language Pathology 2012****

Academic level	01	02	03	FINAL
Population group				
Asian	2	1	1	1
Black		1		3
Coloured	1		1	
White	36	24	22	23
Language				
Afrikaans	17	15	9	12
Afrikaans/English	2	1		1
English	18	9	15	12
German	2			
Sepedi				1
Sesotho				1
Setswana		1		
Gender				
Female	39	26	24	27
Total	39	26	24	27

Source: BIRAP, 2013

SECTION B: POSTGRADUATE DIPLOMA

Table 4.3: Demographics of students registered for Advanced Diploma: Hearing Aid Acoustics 2012

Academic level	01	FINAL
Population group		
Asian	3	1
Black	5	3
White	16	14
Language		
Afrikaans	14	10
Canadian French		1
English	7	4
IsiZulu		2
Other Language	1	
Sepedi	1	
Setswana	1	
Xitsonga		1
Gender		
Female	16	10
Male	8	8
Total	24	18

Source: BIRAP, 2013

SECTION C: POSTGRADUATE DEGREES

Table 4.5: Number of registrations for postgraduate degree and preparatory courses

COURSE	TOTAL
Master's Preparatory	12
MCommunication Pathology	36
DPhil Communication Pathology	8
Total	56

SECTION D: THROUGH-PUT NUMBERS OF FINAL YEAR AND POSTGRADUATE STUDENTS

Table 4.6: Preliminary graduate numbers in specific programmes at the end of 2012

Term	Academic Plan Code	Academic Plan	Ethnic Group	Female	Male	Total
2012	01122555	Advanced Diploma: Hearing Aid Acoustics	Asian	1		1
			Black	1		1
			White	5	2	7
	01122555 Total			7	2	9
	01135021	BCommunication Pathology: Speech-Language Pathology	Asian	1		1
			White	22		22
	01135021 Total			23		23
	01135031	BCommunication Pathology: Audiology	Asian	2		2
			White	16		16
	01135031 Total			18		18
	01135041	BCommunication Pathology: Speech-Language Path and Aud	White	2		2
	01135041 Total			2		2
	01250021	MCommunication Pathology: Communication Pathology	White	3		3
	01250021 Total			3		3
	01264611	DPhil: Communication Pathology	White	2		2
	01264611 Total			2		2

Source: BIRAP, 2013

Table 4.7: Achievements by final year undergraduate students during 2012

Name	Achievement
Danielle Pienaar	SASLHA Prize – Best final year student in Audiology – Clinical
Danielle Pienaar	Susan M Swart Prize – Best final year student in Audiology – Academic
Roxanne Malan	SASLHA Prize - Best final year student in Speech Pathology – Clinical
Roxanne Malan	P De V Pienaar Prize – Best final year student in Speech Pathology – Academic
Lindsay Dickenson Roxanne Malan Tamaryn Pike	A B Clemons Award for best research project
Therine Hattingh	SAAA Prize for the most professional student in Audiology

5. TEACHING AND LEARNING

Table 5.1: Clinical contexts utilized for student training during 2012

Clinical training sites	Modules
1. Tertiary hospitals: Steve Biko Academic hospital, 1 Military hospital, Dr George Mukari hospital, Chris Hani Baragwanath hospital, Universitas hospital, Chris Hani-Baragwanath hospital, Charlotte Maxeke hospital, Red Cross War Memorial Children's hospital	KMP 381 ODL 482 ODL 382
2. Secondary level hospitals Thembisa, Rob Ferreira, Ermelo, Kalafong, Tswane District, Witbank, Tambo Memorial, Windhoek Central, Murchison, Klerksdorp	KMP 281 381, 482 ODL 281, 482
3. Private hospitals and Centres Eugene Marais hospital, Femina hospital, Kloof hospital, Little Company of Mary hospital, Medforum hospital, Muelmed Rehabilitation Centre	KMP 381, 483 ODL 382 SPP 482
4. Primary health care clinics Daspoort Poli Clinic	KMP 483
5. Specialized clinics/centres Facial Cleft Deformities Clinic, University of Pretoria Cochlear Implant Unit, Consultation Voice Clinic, PPS-CHIRB, Vestibular Laboratory, Centre for Listening and Spoken Language	KMP 110, 482 ODL 382, 482 SPP 181, 210
6. Care centres Mamelodi Centre for children with multiple disabilities	KMP 483
7. Primary schools (7) Wespark Laerskool, Die Heuwel Laerskool, Genl. Nic Smit Laerskool, Lindopark Primary School, Genl. Beyers Laerskool, Booysens Laerskool, Riviera Laerskool	KMP 120, 281 483 ODL 381, 481 SPP 281, 381, 382, 482
8. Special schools Sonitus School, Transoranje School, New Hope School, Pretoria School, Eduplex, Carel du Toit Centre, Via Nova School, Alma Centre	ODL 481, 482 SPP 481, 482
9. Nursery schools Beyers Bytjies, Small Talk, Kwaggasrand, Sunnyside pre-primary school	KMP 120 SPP 281, 381, 382
10. Support groups – Conversation groups at the Department of Communication Pathology – Speakeasy	SPP 482
11. Industries Volkswagen: Panel beaters and factories	ODL 281
12. Speech, Voice and Hearing Clinic, Department of Communication Pathology	KMP 120, 210, 482 ODL 281, 382, 482 SPP 281, 381, 481, 482
13. PPS-CHIRB, Department of Communication Pathology	KMP 181, 210, 220, 482, SPP 381
14. Private audiology and speech-language therapy practices HASS, Mariet du Plooy, Hearing Innovations, and various other practices, depending on students' choice	KMP 210 ODL 381, 382
15. Homes for senior citizens Susan Strydom, Jaffa, Ons Tuis	SPP 482
16. Home-based care	SPP 482

6. RESEARCH

Table 6.1: Peer-reviewed articles by staff members

Brits, J., Strauss, S., Becker, P., & Swanepoel, D. (2012). Hearing profile of gold miners with and without tuberculosis. <i>Occupational and Environmental Medicine</i> , 69, 243-249.
Friderichs, N., Swanepoel, D., & Hall, J. (2012.) Efficacy of a community-based infant hearing screening program utilizing existing clinic personnel in Western Cape, South Africa. <i>International Journal of Pediatric Otorhinolaryngology</i> , 76, 552-559.
Le Roux, M. (2012). An acoustic comparison: Setswana vowels versus the cardinal vowels. <i>South African Journal of African Languages</i> , 32(2), 175-180.
Meyer, M., Swanepoel, D., Le Roux, T., van der Linde, M. (2012). Early detection of infant hearing loss in the private health care sector of South Africa. <i>International Journal of Pediatric Otorhinolaryngology</i> , 76, 698-703.
Oosthuizen, I., & Swanepoel, D. (2012). Speech-perception-in-noise and bilateral spatial abilities in adults with delayed sequential cochlear implantation. <i>South African Journal of Communication Disorders</i> , 59, 45-52.
Strauss, S., Swanepoel, D., Becker, P., & Hall, J. (2012). Prevalence and degree of noise-induced hearing loss in South African gold miners. <i>Occupational Health Southern Africa</i> , 18(6), 20-25.
Uys, M., Pottas, L., & Vinck, B. (2012). The influence of non-linear frequency compression on the perception of music by adults with a moderate to severe hearing loss: Subjective impressions. <i>South African Journal of Communication Disorders</i> , 59, 53-63.
Wium, A.M., & Louw, B. (2012). Continued professional development of teachers to facilitate language used in numeracy and mathematics. <i>South African Journal of Communication Disorders</i> , 59, 8-15.

Table 6.2: International conference papers by staff members 2012

Conference Name	Presentation Title	Presenter/s
XXXI World Congress of Audiology Moscow, Russia 29 April – 3 May	Inclusive education in South Africa: Challenges for including the child with hearing loss	Dr L Pottas
	Temporal resolution: Gap detection threshold in normal hearing young South Africans	Dr L Pottas
Sixteenth Biennial Conference on Motor Speech Disorders and Speech Motor Control Santa Rosa, California 1-4 March	Knowledge of speech motor plans in normal adult speakers and individuals with apraxia of speech	Prof. A van der Merwe
7 th World Congress on Fluency Disorders Tours, France 2-5 July	A differential diagnostic checklist to identify symptoms of neurogenic stuttering	Ms UL Zsilavec

Table 6.3: Papers delivered by staff members at national conferences 2012

Authors	Title of paper	Conference name	City	Date
Dr ME Soer	Ethics	SHAA Symposium	Bedford View, Johannesburg	14 Sep
Prof. A van der Merwe	1) Outcomes of the SML programme on the treatment of childhood and acquired apraxia of speech (Key note address) 2) Signs of motor speech disorders in speakers of African languages	48th Congress of the SA Society of Otorhinolaryngology, Head and Neck Surgery in association with the SA Head and Neck Oncology Society, SA Association of Audiologists, and SASLHA	Sun City, North West Province	3-6 Nov
Ms M van Zyl	Development of an Afrikaans sentence recognition test			
Ms MM Viviers	Feeding and swallowing difficulties in 3-5 year old children: Comparison between typical development and autism spectrum disorder	National Autism Conference	Pretoria	19 Oct
Ms MM Viviers	FASD: Communication as foundation for academic achievement	National Foetal Alcohol Spectrum Disorder Conference (Keynote speaker)	Cape Town	7 Sep

Table 6.4: Papers delivered by staff members at regional seminars

Presenter	Title of paper
1. Neuroscience Day, University of Pretoria, 10 May	
Prof. A van der Merwe	Motor awareness of speech production in normal adult speakers: What can be assessed consciously?
2. Ear Canal Management Workshop, Department of Communication Pathology, Pretoria, 28 May	
Dr ME Soer Dr L Pottas Prof. A Mulder Prof. J Clarke	Clinical practice guidelines and ethical considerations for ear canal management for audiologists
3. The Annual CHRIB Seminar, hosted by CHRIB, Department of Communication Pathology, Pretoria, 1 September	
Prof. BHME Vinck	Early identification of hearing loss: A European example
Prof. AM Kritzinger, Ms MM Viviers Dr L Pottas	Parent-focused strategies for assessment feedback
Ms MM Viviers	New advances in foetal alcohol spectrum research
Ms L Hugo	Paediatric amplification: Theory versus practice in both the private and public health sectors

Table 6.5: International and national conference posters by staff members 2012

Authors	Title of poster	Conference and city	Country	Date
Hattam, M Louw, B Geertsema, S	Communication characteristics of children infected with HIV/AIDS in South Africa	ASHA Convention 2012, session 7388	Atlanta, USA	15-17 Nov
Visser, CM	(C)APD tests for non-English speaking individuals: It is our business!	Global Perspectives on CAPD Conference, contribution 102	Boston, USA	28-31 March
Viviers, MM Richter, C Preece, K	Early intervention services at primary health care clinics in the City of Tshwane Municipality: Services to 0-3 year olds suspected of foetal alcohol spectrum disorder not on the map?	48th Congress of the SA Society of Otorhinolaryngology Head and Neck Surgery	Sun City, South Africa	3-6 Nov
Viviers, MM Dickenson, L Malan, R Pike, T	Feeding and swallowing difficulties in 3-5 year old children: Comparison between typical development and autism spectrum disorder	48th Congress of the SA Society of Otorhinolaryngology Head and Neck Surgery	Sun City, South Africa	3-6 Nov
Viviers, MM Botha, L Schoeman, J	A national survey of the clinical assessment practices of speech-language therapists regarding paediatric dysphagia	48th Congress of the SA Society of Otorhinolaryngology Head and Neck Surgery	Sun City, South Africa	3-6 Nov

Table 6.6: Research reports by final year students in Audiology

	Student Names	Project Title	Study leaders
1	Christy Leader Elri van der Merwe	Noise exposure levels in a neonatal intensive care and high care unit in a South African public health care hospital	Prof. DCD Swanepoel
2	Nanette Buys Marzanne Gibson	The prevalence and characteristics of music induced tinnitus in young adults	Prof. BHME Vinck Ms CM Visser
3	Lorné Johl Danielle Pienaar	Hearing loss at a Paediatric Auditory Evoked Potential Clinic in South Africa – A five-year review	Prof. DCD Swanepoel
4	Nazrana Shabbir Ally Shouneez Yousuf Hussein	The effects of Type II Diabetes Mellitus on the outer hair cell functioning using Otoacoustic Emission testing	Prof. BHME Vinck Dr ME Soer
5	Carli Dawkins Hanneke Rabé	Sound intensities of different movie genres measured within movie theatres	Prof. BHME Vinck
6	Nanette Marais Storm Manjerico	Clinical utility of cVEMPs and oVEMPs in children with auditory neuropathy	Prof. BHME Vinck Ms BM Heinze
7	Nadia de Lange Therine Hattingh	Temporal resolution: GIN (Gaps-in-Noise) test performance in normal hearing South Africans adults	Dr L Pottas
8	Nannika le Roux Elzanne Roos	Clinical profile and outcomes of a group of paediatric cochlear implant recipients	Ms T le Roux
9	Marike Gous Danielle van Zyl	The effect of movie theatre noise on the hearing sensitivity of adults	Prof. BHME Vinck

Table 6.7: Research reports by final year students in Speech-Language Pathology

	Student Names	Project Title	Study leaders
1	Nomvuzo Dlamini Lebogang Sefali	The perception and reported practice of traditional healers regarding children with feeding, communication and hearing difficulties	Prof. AM Kritzinger
2	Carmen Grobler	People who suffer from tinnitus and persons who stutter: Do they share the same self-perceptions?	Ms UL Zsilavec Ms J van der Linde
3	Roxanne Malan Tamaryn Pike Lindsay Dickinson	Feeding and swallowing difficulties of children with Autism Spectrum Disorders (age 3 to 5 years) compared to typically developing children of the same age	Ms MM Viviers
4	Esté Combrinck Celeste Cornadie Helené Pieterse	Stakeholders' perception of speech-language therapy provided to post-adolescent individuals with Autism Spectrum Disorder in South Africa	Ms S Geertsema
5	Joanné Mouton Carlien Muller	Auditory processing characteristics of preschool children with symptoms of Autism Spectrum Disorder	Prof. AM Kritzinger
6	Megan Daniel Lauren Davisson	Caregiver perceptions, feeding profiles and nutritional status of children with cerebral palsy in Mquma health district in rural Eastern Cape	Prof. AM Kritzinger
7	Annelie Bornman Dorét Niemandt	The phonological awareness skills of children with Asperger syndrome in the foundation phase of education	Ms J van der Linde
8	Simone Lotriet Rebecca Ramage	The self-reported ability of speech-language therapists and occupational therapists to identify symptoms of Fetal Alcohol Spectrum Disorder (FASD) in the 0-5 year old population in South Africa	Ms MM Viviers
9	Candice Gordon	A preliminary feeding profile for a small group of neonates born prematurely	Ms MM Viviers
10	Raquel Monteiro Seijal Ravjee	Preliminary therapeutic outcomes after dysphonia treatment to the Stark-Griffin Test of Dyslexia	Ms S Geertsema
11	Berna Nolte Sumari van Biljon	To compare the performance of the GFTA-2 between English first language and English second language (first language Sepedi speakers) school aged learners in an urban South African context	Ms J van der Linde
12	Mollie Steyn Christine Viljoen	Temporal and spatial variability of speech production in childhood apraxia of speech	Prof. A van der Merwe

Table 6.8: Postgraduate research: MCommunication Pathology dissertations

Student	Title	Supervisors and examiners
1. De Clercq H	The instructional design of a training program for audiometricians	Supervisor: Dr ME Soer Co-supervisor: Ms T le Roux External examiner: Prof SR Hugo (Ear Institute, Namibia)
2. Friderichs N	Efficacy of a community-based infant hearing screening programme in the Western Cape	Supervisor: Prof. DCD Swanepoel Co-supervisor: Prof. JW Hall External examiner: Prof. D Hayes (University of Colorado, USA)
3. Meyer ME	National survey of early hearing detection and intervention in the private health sector	Supervisor: Prof. DCD Swanepoel Co-supervisor: Ms T le Roux External examiner: Prof. D Hayes (University of Colorado, USA)
4. Müller C	Extended frequency range amplification, speech recognition and functional performance in children with mild to severe sensorineural hearing loss	Supervisor: Dr L Pottas Co-supervisor: Ms T le Roux External examiner: Dr K Joubert (University of the Witwatersrand)

Table 6.9: Postgraduate research: DPhil Communication Pathology

Candidate	Thesis	Promotors and examiners
Uys M	The influence of non-linear frequency compression on music perception for adults with a moderate to severe hearing loss	Promotor: Dr L Pottas Co-promotor: Prof. BHME Vinck Internal examiner: Dr ME Soer External examiners: Dr S Cummings (private practice, Ireland) Dr L Joseph (University of KwaZulu-Natal)

7. COMMUNITY ENGAGEMENT

Table 7.1: Continuous professional development seminars presented by the Department of Communication Pathology during 2012

Topic	Date	Presenters	Number of attendees
1. The Future is HEAR - Update on occupational and recreational noise induced hearing loss	21 Feb	Prof. BHME Vinck Dr Egwin van der Heuwel	120
2. Ear canal management workshop	29 May	Prof. Jackie Clark	86
3. CI THE LIGHT on cochlear implants?	24 Aug	Prof. BHME Vinck	80
4. Annual CHRIB Seminar Early Communication Intervention: A shared role for audiologists and speech-language therapists	1 Sep	Dr L Pottas, Ms MM Viviers, Prof. BHME Vinck, Ms L Hugo, Prof. AM Kritzinger	40
5. Speakeasy Seminar to mark International Stuttering Awareness Day	25 Oct	Ms UL Zsilavec Adv L Nowosenetz	45

Table 7.2: CPD-HOUR activities presented by lecturers of the Department of Communication Pathology during 2012

Topic	Date	Presenter	Number of attendees
Management of feeding difficulties in the premature infant	23 February	Ms MM Viviers	12
Classroom observation: Should we do it?	10 May	Ms CM Visser	10
Stuttering workshop: Straight talk on stuttering	25 October	Ms UL Zsilavec	45

Table 7.3: Department of Communication Pathology as continuous professional development (CPD) accreditor during 2012

Different service providers	Number of service providers	Number of activities accredited
1. Journal clubs	5	51
2. Individuals who supervised student training	10	13
3. Level 3 activities: Individuals earning continuous educational units (CEU's) for postgraduate studies	6	6
4. Organizations, departments or units presenting workshops and seminars	5	16
5. Individuals presenting training seminars	4	4
6. Individuals earning CEU's as authors of posters	1	1
7. CPD articles provided to members of a professional body	1	6
Total	32	97

Table 7.4: Community engagement activities undertaken by staff members 2012

Member/s of staff and presentation	Organisation and location	Date
Ms S Geertsema <ul style="list-style-type: none"> - Vowel perception English Second Language Learners - Appointed member of the National Red Apple Dyslexia Association Board; ongoing assessment and diagnostic services at University of Pretoria - Strategic planning and collaboration with AFA with regard to systematic prevalence studies in the Northern Cape 	Informal Private Practitioners' Group, St Alban's College, Pretoria National Red Apple Dyslexia Association Association for Autism	13 Sep 3 Annual Meetings 3 Meetings
Dr GM Goldblum <ul style="list-style-type: none"> - Coordinator: Conversational groups for individuals with aphasia and cognitive communication disorders - Open evening for Conversational Groups 	Department of Communication Pathology Conference Centre, UP	Weekly meetings
Prof. AM Kritzinger <ul style="list-style-type: none"> - Phone-in programme on SAFM with Karen Key - Contribution to <i>Baba en Kleuter</i> article 	Topic: Early Intervention for children with Down syndrome Gebore om te praat: Idees vir ouers oor spraak- en taalontwikkeling	20 March May 2012
Dr L Pottas <ul style="list-style-type: none"> - Phone-in programme on SAFM with Karen Key 	Auditory processing problems	26 June
Mr JJ Schoeman <ul style="list-style-type: none"> - Self advocacy speech at the World Down Syndrome Congress, Cape Town 	My life and work as a South African Soap Star	Aug 2012
Dr ME Soer <ul style="list-style-type: none"> - Doctors in Occupational Health at Steve Biko Academic hospital 	Audiometry and noise-induced hearing loss	May 2012
Prof. DCD Swanepoel <ul style="list-style-type: none"> - Talk on hearing loss to geriatric interest group - Interview with Radio 702 - Phone-in programme on SAFM with Karin Key 	Dutch Reformed Church Elarduspark, Elderly Support Group Audiology Early hearing detection and intervention	April 2012 Sep 2012
Prof. BHME Vinck <ul style="list-style-type: none"> - Two phone-in programmes on SAFM with Karin Key 	Vestibular disorders	April 2012
Ms MM Viviers <ul style="list-style-type: none"> - Early communication intervention for young children with cleft lip and palate: New evidence - Eat, talk, love...Early intervention: Facilitating development in infants and young children with Down syndrome 	Informal Private Practitioners' Group, St Alban's College, Pretoria Down Syndrome Association: Pretoria Branch, Head Office, Centurion	2 May 10 Nov
Ms UL Zsilavec <ul style="list-style-type: none"> - Coordinator of UP Speakeasy Support Group for people who Stutter - Post graduate Social work students - Interview with Radio Namakwaland - Speakeasy Seminar to mark International Stuttering Awareness Day 	Department of Communication Pathology The role of the audiologist and speech-language therapist <i>"Help hulle praat"</i> <i>Straight talk on stuttering</i>	8 meetings 21 Feb 21 March 25 Oct

8. SPECIALIST CLINIC: CLINIC FOR HIGH-RISK BABIES (CHIRB)

Table 8.1: CHIRB student training and client profile in 2012

Description of activities and client characteristics		Number
Undergraduate student training	BCommunication Pathology IV (Intensive training)	41
	BCommunication Pathology III	53
	BCommunication Pathology II	61
	BCommunication Pathology I	75
	MBChB III	60
	BOccupational Therapy II	44
Postgraduate student training	MEducational Psychology final year	14
	MECI II (SLP & ODL)	7
Assessments (n=81): Parents and young children	Initial assessments	61
	Re-assessments	20
Number of families who received intervention at CHIRB		29
Risk conditions (n=81)	Cleft lip and/or palate, including Pierre Robin sequence, Goldenhar syndrome, Treacher Collins syndrome, van der Woude syndrome	19
	Suspected autism spectrum disorder, including Asperger syndrome	17
	Developmental delay	11
	Down syndrome	7
	Low birth weight and preterm birth with delayed development	7
	Slow expressive language development	6
	Foetal alcohol spectrum disorder	4
	Suspected 22q11.2 deletion	3
	Seizure disorder	2
	Other conditions: HIV encephalopathy, Auditory neuropathy spectrum disorder, Congenital blindness, Prader Willi syndrome, Multiple disabilities, 4q Deletion syndrome	5
Geographical distribution of client families (n=81)	Pretoria and surrounding areas	49
	Centurion	13
	Gauteng	9
	Mpumalanga	3
	Limpopo	3
	Northern Cape	1
	North West	1
	Kwa-Zulu Natal	1
	Botswana	1
Home language diversity of client families (n=81)	Afrikaans	45
	English	14
	Setswana	11
	IsiZulu	3
	Northern Sotho	2
	Sesotho, Xitsonga, Tshivenda, Greek, IsiNdebele, Sepedi	6

9. UNIVERSITY OF PRETORIA COCHLEAR IMPLANT UNIT (UP-CIU) 2012

Team Members

Chairman: Prof. BHME Vinck, chairman of UP-CIU

Co-ordinator: Ms Nicolize Cass

Medical: The pre-operative evaluations, surgery, post-operative care and management are performed by: Prof JG Swart (Private), Dr ECM Burden (Private), Dr L Hofmeyr (1 Military Hospital and private).

Psychology: *Ms T van Huyssteen* is responsible for the pre-operative evaluations as well as pre- and post-operative counselling.

Audiology and Speech-Language Pathology:

- *Ms N Cass:* Unit co-ordinator, pre-operative evaluation and counselling, programming (mapping) of speech processors, intra-operative testing and post-operative measurements.
- *Ms T le Roux:* Pre-operative evaluation and counselling, programming (mapping) of speech processors, intra-operative testing and post-operative measurements. Management and supervision of speech therapy and auditory training, student training and research (under- and postgraduate students).
- *Dr ME Soer:* Head of Audiology Division in the Department of Communication Pathology – offers support in clinical meetings and the functioning of the Unit within the Department.
- *Ms M Beukes:* Joined the UP-CIU in a private capacity. She is involved in pre-operative evaluation and counselling, programming (mapping) of speech processors, intra-operative testing and post-operative measurements.
- *Ms T van Zyl:* Joined the UP-CIU in a private capacity. She is involved in pre-operative evaluation and counselling, programming (mapping) of speech processors, intra-operative testing and post-operative measurements.
- *Ms R Botha:* Joined the UP-CIU in a private capacity. She is involved in pre-operative evaluation and counselling, programming (mapping) of speech processors, intra-operative testing and post-operative measurements.
- *Ms J Barnard:* Auditory rehabilitation and programming of speech processors of young children and school-going children at the satellite centre.
- *Ms K Weinmann:* Pre-operative and post-operative speech and language assessments of adults and children. Auditory rehabilitation, post-operatively, of adults and children is also performed as well as Auditory Verbal Therapy.
- *Ms M Barnes:* Pre-operative and post-operative speech and language assessments of adults. Auditory rehabilitation of adults.
- *Ms L Spies:* Pre-operative and post-operative speech and language assessments of adults. Auditory rehabilitation of adults.
- *Ms N Venter:* Pre-operative and post-operative speech and language assessments of adults. Auditory rehabilitation of adults.
- *Ms B Schmid:* Pre-operative and post-operative parental guidance. Auditory rehabilitation of young children pre-operatively and post-operatively is also performed as well as Auditory Verbal Therapy. Support to cochlear implant users in the mainstream educational environment is also provided.

Bio-Engineering *Prof. J Hanekom* is responsible for research on cochlear implants from an engineering perspective.

The team is supported by *Ms E Zybrands*, the administrative assistant.

Services Rendered: 2012

- **Evaluations performed and outcomes:**

During 2012, a total number of 41 new patients were evaluated by the UP-CIU as potential cochlear implant candidates. Of those evaluated, 20 patients were children and 21 patients were adults. Two children and two adults were rejected as candidates.

- **Implants performed and patient statistics:**

Table 9.1: Cochlear implants performed and patient statistics 2012 at the University of Pretoria

	Adults	Children
Total number of patients implanted in 2012	14*	18*
Number of bilateral implants	3	10
Patients from other programs	15	7
Total number of patients evaluated	21	20
Total number of devices upgraded in 2012	29	11
Number of explants and re-implants	-	1

* Bilateral implants included

The majority of the recipients were implanted with the Nucleus Freedom CI24RE(CA) cochlear implant systems from Cochlear Corporation. One adult patient was implanted with the Sonata i100 Standard electrode from MedEL.

Military Patients

The Military programme closed down all services to cochlear implant patients at the beginning of 2012. Their existing patient base (10 patients) was transferred to the UP-CIU for further management.

- **Evaluations performed and outcomes:**

During 2012, four patients were referred by 1 Military Hospital to be evaluated as potential cochlear implant candidates. All patients were accepted as suitable candidates for cochlear implants.

Table 9.2: Cochlear implants performed and patient statistics 2012 from 1 Military Hospital

	Adults	Children
Total number of patients implanted in 2012	0*	1*
Number of bilateral implants	0	0
Total number of patients evaluated	2	2
Total number of devices upgraded in 2012	2	0

* Bilateral implants included. The patient was implanted with the Sonata i100 Standard electrode from MedEL.

10. INTERNATIONAL VISITS, VISITORS AND COLLABORATION

Table 10.1: International visits by members of staff during 2012

Visitor	Institution	Date
Prof. DCD Swanepoel	Ear Science Institute Australia, Perth, Australia: Research collaboration visit and presentation.	25 June-14 July
Prof. DCD Swanepoel	National Acoustics Laboratory, Sydney, Australia Purpose: Research visit and presentation	5 June
Prof. DCD Swanepoel	University of Ghent, Belgium Purpose: Presentation	18-22 October
Ms T le Roux	Visited the Birmingham Paediatric Cochlear Implant Program, and the University College of London (UCL) Ear Institute (research centre); Attended the British Cochlear Implant Group's (BCIG) annual conference in Manchester Purpose: Study tour to the UK to investigate database systems for cochlear implant recipients and to collaborate with researchers in the field of cochlear implant database research	12-18 March

Table 10.2: International visitors received in 2012

Country	Visitors received	Institution/s name/s	Purpose
USA	Prof. Jackie Clark	University of Texas, Callier Centre	Workshops
Belgium	Dr Egwin van der Heuwel	University of Ghent	Workshop
USA	Prof. Edwin Maas	Department of Speech, Language, and Hearing Sciences, University of Arizona, Tucson	Research and teaching collaboration, workshop presentation
USA	Prof. Mick McNeil	Distinguished Professor and Chair, Department of Communication Science and Disorders, University of Pittsburgh	Research collaboration and presented a lecture to staff and students
USA	Dr Wayne Staab Dr Mary Ann Ronsky	Dr Wayne Staab and Associates Georgia State University	Both served on the review panel for the external evaluation of the Department of Communication Pathology