

**CONTROVERSIES 2013**

# **EMPHYEMA OF THE GALLBLADDER**

**Brian Warren**

**Division of Surgery**

**Tygerberg Hospital / University of Stellenbosch**



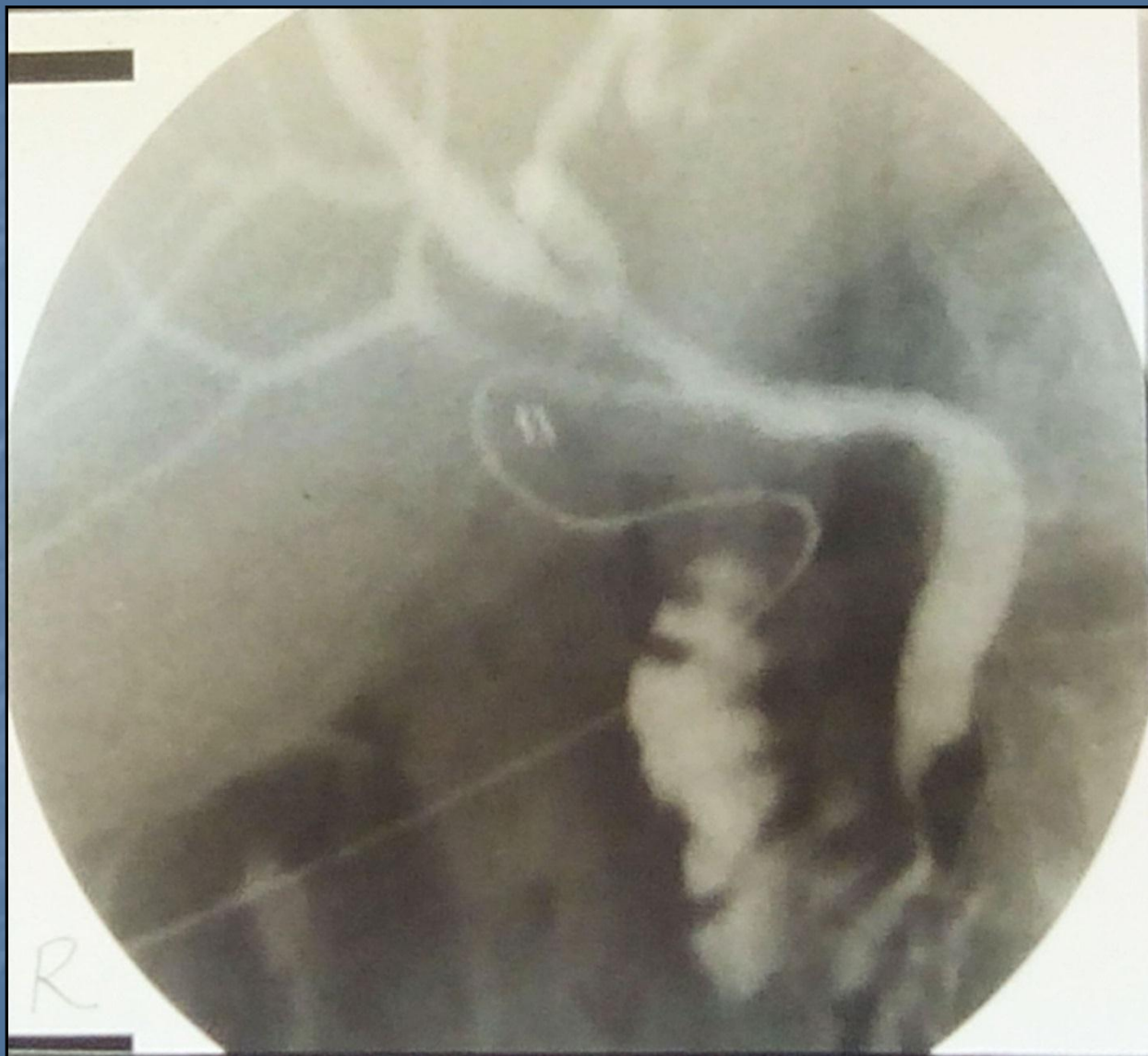
# **SURGICAL TECHNIQUES**

## **1990**

**“The Difficult Gallbladder”**









# **“EMPYEMA”**

**LITERALLY - Pus in an inflamed gallbladder.**

**IN PRACTICE - The most common outcome of Acute Cholecystitis not surgically treated.**

# **NATURAL HISTORY OF ACUTE CHOLECYSTITIS**

- **Empyema**
- **Resolution**
- **Mucocele**
- **Perforation – Types I, II, III**



## **EMPYEMA onset 4 – 5 days after onset of acute symptoms.**

- 1980's
  - Delayed Elective Cholecystectomy at 6+ weeks
  - ? Cholecystomy

Nel, Grobler: Surgery Annual 1991
- 1990's Acute Cholecystitis contraindicates
  - Laparoscopic Cholecystectomy
  - ↓
  - Delayed Laparoscopic Cholecystectomy
- 2000's Early Laparoscopic Cholecystectomy
  - Johansson *et al*: British Journal of Surgery 2004
  - Serralta *et al*: Surg Lap Endosc 2002



# **PREVENTION BETTER THAN CURE**

- **Late Presentation**
- **Other delaying factors**

1992  
09 SEP  
16:07  
DYNRNG  
58 db  
3M  
DEPTH  
164 MM  
POWER  
59%  
FPS  
24  
REJECT  
1  
EDGE  
1  
GREY  
2  
SMOOTH  
2

STEEN

GB

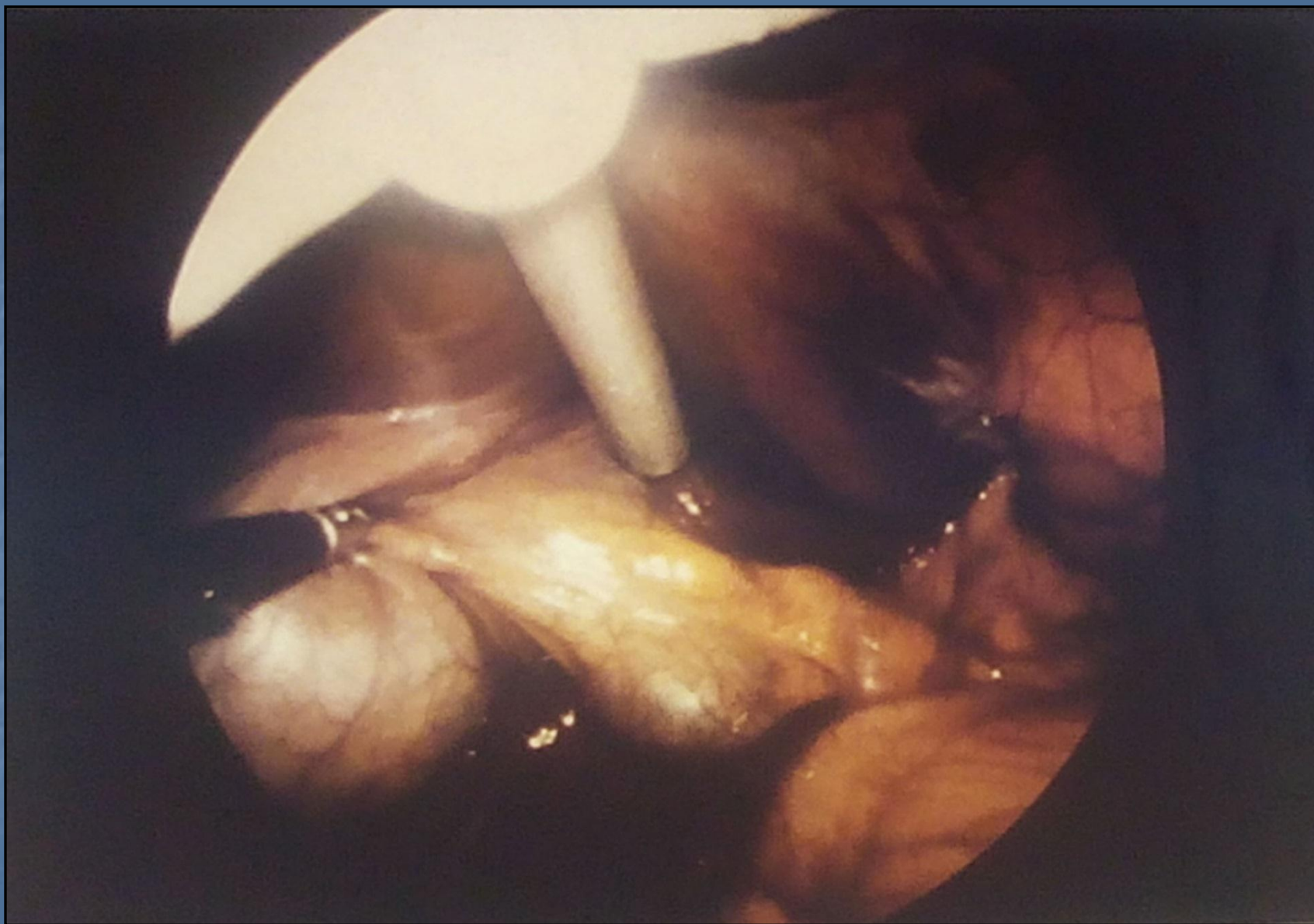
0 mm

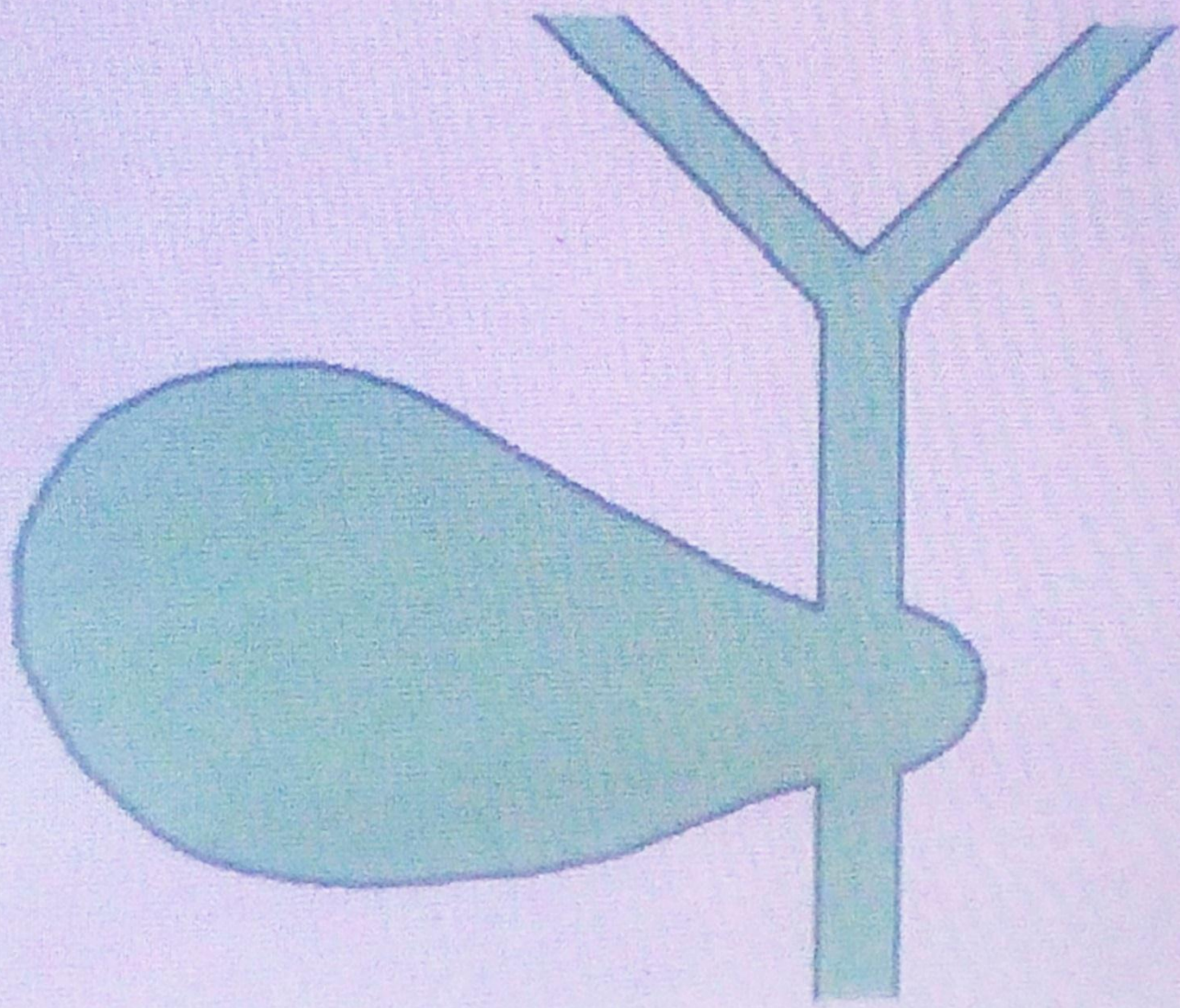
CAL +

16 MM





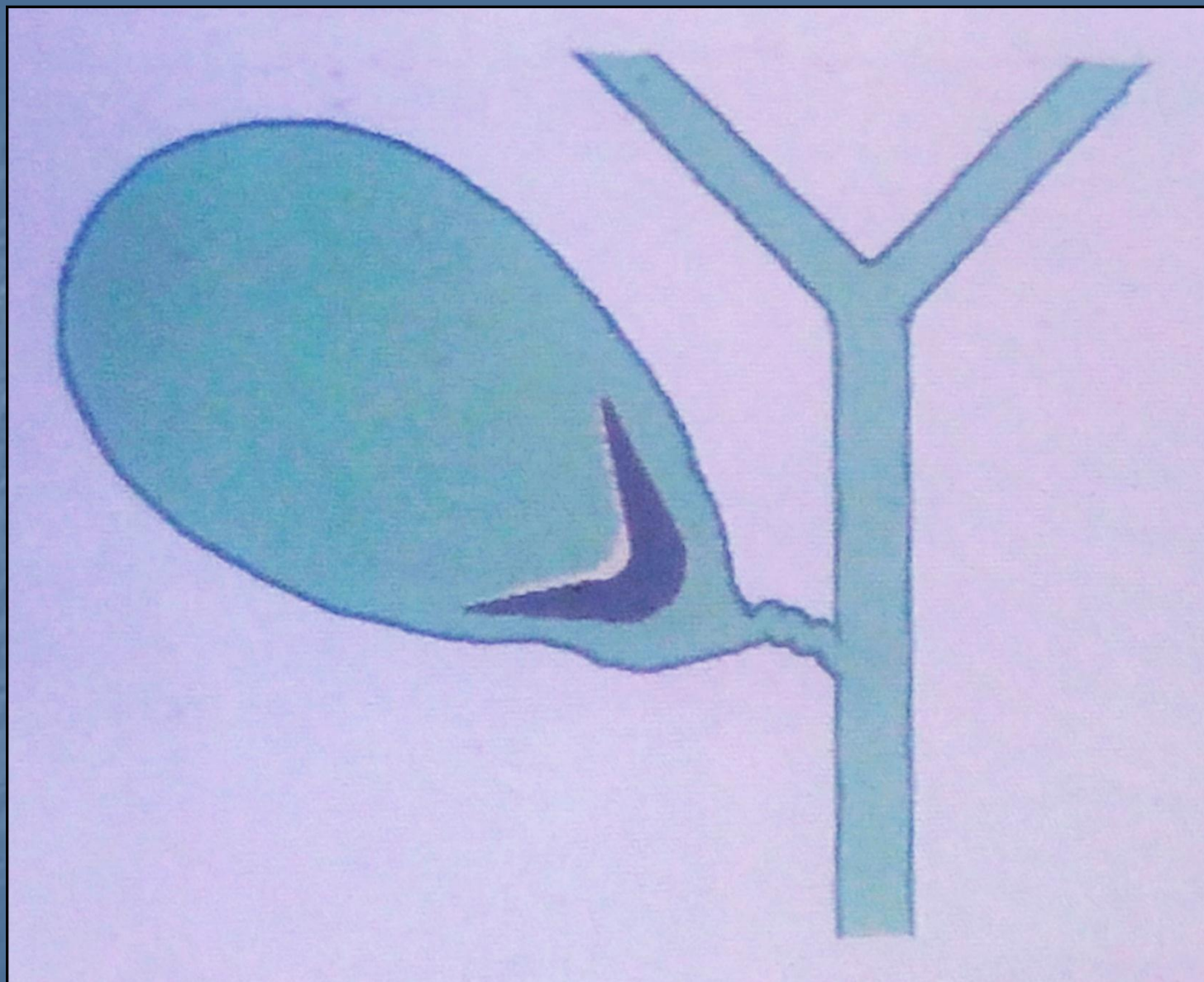




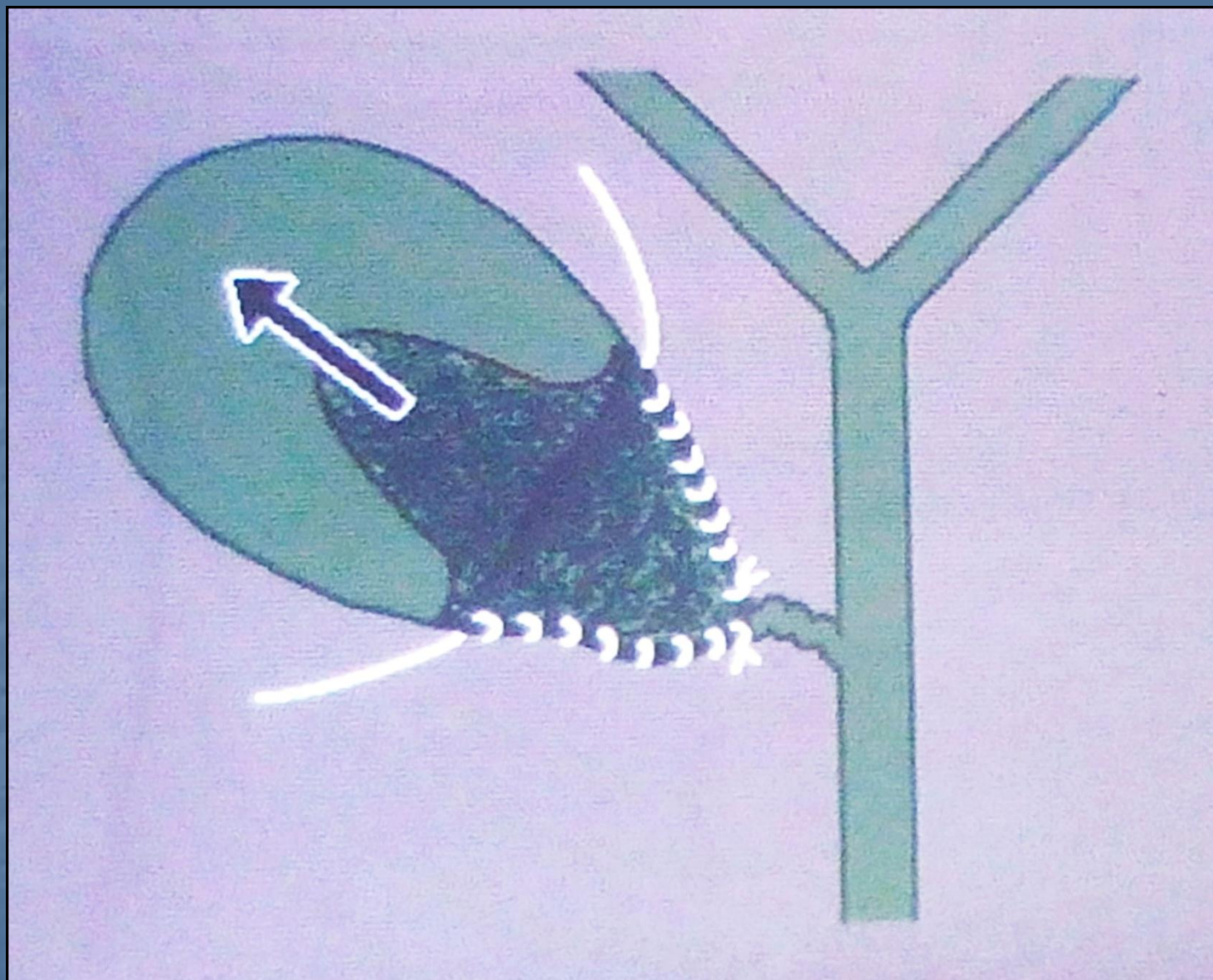


- **Cholecystostomy**
  - **Percutaneous**
  - **Laparoscopic**
  - **Open**
- **Cholecystectomy with no further delay**
  - **Be patient**
  - **Be defensive**

- **Low conversion threshold**
- **?? Fundus first**
- **? Cholecystostomy**
- **Subtotal Cholecystectomy**
  - **Thorek: J Phys Ther 1935**
  - **Bornman, Teblance: Surgery 1985**









**Better to leave some  
gallbladder behind than to  
remove the entire  
gallbladder plus a segment  
of bile duct...**