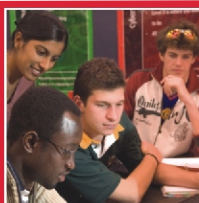
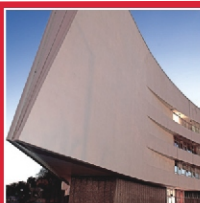
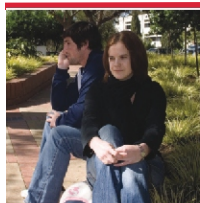


National Senior Certificate | 2009 Admission Requirements



UNIVERSITEIT VAN PRETORIA
UNIVERSITY OF PRETORIA



NATIONAL SENIOR CERTIFICATE (NSC)

ADMISSION REQUIREMENTS FOR THE UNIVERSITY OF PRETORIA

2009

The National Senior Certificate (NSC – a 130-credit certificate at level 4 on the NQF) will first be issued at the end of 2008. A learner must pass seven subjects (four subjects from **Group A** and three subjects from **Group B**) to be issued the National Senior Certificate.

National Senior Certificate generic requirements to pursue degree study at any university:

The Minister of Education gazetted the minimum admission requirements for entrance to higher education in August 2005.

The minimum statutory requirement to obtain university entrance is a National Senior Certificate (NSC) certified by Umalusi with an achievement rating of 4 (50-59%) in at least **four recognised 20-credit subjects** from the designated subject list.

Please note that Life Orientation is a ten-credit subject.

To be able to gain access to a Faculty and specific programmes, prospective students are required to have the appropriate combinations of recognised NSC subjects as well as certain levels of achievement in these subjects.

In this regard, the determination of an Admission Point Score (APS) is explained, and a summary of the faculty specific requirements, i.e. the APS per programme and the specific subjects required per programme, are provided. Take note that there may be additional subject requirements under "Regulations" in the Rules and Syllabi of each Faculty. Take further note that the achievement of the minimum requirements does not guarantee a learner admission to any programme or field of study.

Determination of an Admission Point Score (APS, old M-Score)

The calculation is simple and based on a candidate's achievement in **six recognised 20-credit subjects** by using the NSC ratings, i.e. the "1-to-7 scale of achievement". The highest APS that can be achieved is 42.

Life Orientation is excluded from the calculation determining the APS required for admission per faculty, but the University requires that this subject be passed at a rating higher than the 3 required to obtain an NSC. For example, the Faculty of Health Sciences requires an achievement level of 5 and the other faculties require an achievement level of 4.

Achievement	Achievement level	Marks%
7	Outstanding achievement	80-100%
6	Meritorious achievement	70-79%
5	Substantial achievement	60-69%
4	Adequate achievement	50-59%
3	Moderate achievement	40-49%
2	Elementary achievement	30-39%
1	Not achieved	0-29%

Preliminary admission is based on the results obtained in the final Grade 11 examination. Final admission is based on Grade 12 results. Please note: The final Grade 12 results will be the determining factor with regard to admission.

Alternative admission channels

Candidates with an APS lower than required, or without Mathematics where required, could be considered for admission to a faculty if they meet the additional assessment criteria specified by the University from time to time. Preference will however be given to students who comply with the standard admission requirements of the University.

RECOGNISED 20-CREDIT NATIONAL SENIOR CERTIFICATE (NSC) SUBJECTS (WHICH WILL BE KNOWN AS THE DESIGNATED SUBJECT LIST)

- Accounting
- Agricultural Science
- Business Studies
- Consumer Science
- Dramatic Arts
- Economics
- Engineering Graphics and Design
- Geography
- History
- Information Technology
- Languages (two additional languages over and above the languages in Group A may be offered)
- Life Sciences
- Mathematical Literacy
- Mathematics
- Music
- Physical Science
- Religious Studies
- Visual Arts

RECOGNISED SUBJECTS FOR THE NATIONAL SENIOR CERTIFICATE

GROUP A

OFFICIAL LANGUAGES AT HOME AND FIRST ADDITIONAL LEVELS

Afrikaans Home Language
Afrikaans First Additional Language
English Home Language
English First Additional Language
IsiNdebele Home Language
IsiNdebele First Additional Language
IsiXhosa Home Language
IsiXhosa First Additional Language
IsiZulu Home Language
IsiZulu First Additional Language
Sepedi Home Language
Sepedi First Additional Language
Sesotho Home Language
Sesotho First Additional Language
Setswana Home Language
Setswana First Additional Language
SiSwati Home Language
SiSwati First Additional Language
Tshivenda Home Language
Tshivenda First Additional Language
Xitsonga Home Language
Xitsonga First Additional Language

MATHEMATICAL SCIENCES

Mathematical Literacy

Mathematics

HUMAN AND SOCIAL STUDIES

Life Orientation

GROUP B

AGRICULTURE

Agricultural Management Practices

Agricultural Science

Agricultural Technology

ARTS AND CULTURE

Dance Studies

Design

Dramatic Arts

Music

Visual Arts

BUSINESS, COMMERCE AND MANAGEMENT STUDIES

Accounting

Business Studies

Economics

OFFICIAL LANGUAGES AT SECOND ADDITIONAL LEVEL, AND NON-OFFICIAL LANGUAGES

Afrikaans Second Additional Language

English Second Additional Language

IsiNdebele Second Additional Language

IsiXhosa Second Additional Language

IsiZulu Second Additional Language

Sepedi Second Additional Language

Sesotho Second Additional Language

Setswana Second Additional Language

SiSwati Second Additional Language

Tshivenda Second Additional Language

Xitsonga Second Additional Language

Arabic Second Additional Language

French Second Additional Language

German Home Language

German Second Additional Language

Gujarati Home Language

Gujarati First Additional Language

Gujarati Second Additional Language

Hebrew Second Additional Language

Hindi Home Language

Hindi First Additional Language

Hindi Second Additional Language

Italian Second Additional Language

Latin Second Additional Language

Portuguese Home Language

Portuguese First Additional Language

Portuguese Second Additional Language

Spanish Second Additional Language
Tamil Home Language
Tamil First Additional Language
Tamil Second Additional Language
Telugu Home Language
Telugu First Additional Language
Telugu Second Additional Language
Urdu Home Language
Urdu First Additional Language
Urdu Second Additional Language

ENGINEERING AND TECHNOLOGY

Civil Technology
Electrical Technology
Mechanical Technology
Engineering Graphics and Design

HUMAN AND SOCIAL STUDIES

Geography
History
Religion Studies

PHYSICAL, MATHEMATICAL, COMPUTER AND LIFE SCIENCES

Computer Applications Technology
Information Technology
Life Sciences
Physical Sciences

SERVICES

Consumer Studies
Hospitality Studies
Tourism

FACULTY OF HEALTH SCIENCES

1. A valid National Senior Certificate with admission for degree purposes.

2. General requirements and procedures (see University's website for further information)

- Applicants are divided into categories, and each category has its own APS requirements.
- Selection takes place in all programmes.
- Selection for MBChB and BChD is based on academic merit, the Health Sciences Consortium (HSC) Placement Test and the Value-added Questionnaire.
- Selection for BCur, BOccTher, BRad, BPhysT and BDietetics is based on academic merit and the HSC Placement Test.

3. Minimum subject and level requirements

Degree	Group A			Group B
	Two Languages	Mathematics	Life Orientation	3 Other subjects
MBChB (Medicine)	5 (60-69%) in English (at Home Language level or First Additional Language level) AND another language (at Home Language level or First Additional Language level)	5 (60-69%)	5 (60-69%) (Excluded when calculating the APS)	5 (60-69%) in Physical Science and 5 (60-69%) in two other subjects
BPhysT (Physiotherapy)	4 (50-59%) in English (at Home Language level or First Additional Language level) AND another language (at Home Language level or First Additional Language level)	4 (50-59%)	5 (60-69%) (Excluded when calculating the APS)	4 (50-59%) in Physical Science and 4 (50-59%) in two other subjects
BDietetics (Dietetics)	4 (50-59%) in English (at Home Language level or First Additional Language level) AND another language (at Home Language level or First Additional Language level)	4 (50-59%)	5 (60-69%) (Excluded when calculating the APS)	4 (50-59%) in Physical Science and 4 (50-59%) in two other subjects
BRad (Radiography)	4 (50-59%) in English (at Home Language level or First Additional Language level) AND another language (at Home Language level or First Additional Language level)	4 (50-59%)	5 (60-69%) (Excluded when calculating the APS)	4 (50-59%) in Physical Science and 4 (50-59%) in two other subjects

BOccTher (Occupational Therapy)	4 (50-59%) in English (at Home Language level or First Additional Language level) AND another language (at Home Language level or First Additional Language level)	4 (50-59%)	5 (60-69%) (Excluded when calculating the APS)	5 (60-69%) in Physical Science and 4 (50-59%) in two other subjects
BCur (Nursing)	4 (50-59%) in English (at Home Language level or First Additional Language level) AND another language (at Home Language level or First Additional Language level)	Mathematics or Mathematical Literacy	5 (60-69%) (Excluded when calculating the APS)	4 (50 - 59%) in three other subjects
BChD (Dentistry)	5 (60-69%) in English (at Home Language Level or First Additional Language level) AND another language (at Home Language level or First Additional Language level)	5 (60-69%)	5 (60-69%) (Excluded when calculating the APS)	5 (60-69%) in Physical Science
Dip (OH) (Oral Hygiene)	4 (50-59%) in English (at Home Language level or First Additional Language level)	Mathematics or Mathematical Literacy	4 (50-59%) (Excluded when calculating the APS)	4 (50-59%) in Life Sciences

FACULTY OF ENGINEERING, BUILT ENVIRONMENT AND INFORMATION TECHNOLOGY

1. A valid National Senior Certificate with admission for degree purposes.
2. Minimum subject and level requirements

School of Engineering – Minimum requirements

Degree	APS	Group A			Group B	
		Two Languages	Mathe-matics	Life Orientation	Physical Science	2 Other subjects
Engineering (Four-year Programme)	30	Comply with NSC minimum requirements; ADDITIONALLY one of these languages must be Afrikaans OR English at level 5 (60-69%).	6 (70-79%)	4 (50-59%) (Excluded when calculating the APS)	5 (60-69%)	Any two subjects
Engineering (Five-year Programme) Compulsory Admissions Test	24	Comply with NSC minimum requirements; ADDITIONALLY one of these languages must be Afrikaans OR English at level 4 (50-59%).	5 (60-69%)	4 (50-59%) (Excluded when calculating the APS)	4 (50-59%)	Any two subjects

School for the Built Environment – Minimum requirements

Degree	APS	Group A			Group B	
		Two Languages	Mathematics	Life Orientation	Physical Science	2 Other subjects
BSc (Architecture) (A limited number of students are selected. An interview takes place)	27	Comply with NSC minimum requirements; ADDITIONALLY one of these languages must be Afrikaans OR English at level 5 (60-69%).	4 (50-59%)	4 (50-59%) (Excluded when calculating the APS)	4 (50-59%)	Any two subjects
BSc (Interior Architecture) (A limited number of students are selected. An interview takes place)	27	Comply with NSC minimum requirements; ADDITIONALLY one of these languages must be Afrikaans OR English at level 5 (60-69%).	4 (50-59%)	4 (50-59%) (Excluded when calculating the APS)	4 (50-59%)	Any two subjects
BSc (Landscape Architecture) (A limited number of students are selected. An interview takes place)	27	Comply with NSC minimum requirements; ADDITIONALLY one of these languages must be Afrikaans OR English at level 5 (60-69%).	4 (50-59%)	4 (50-59%) (Excluded when calculating the APS)	4 (50-59%)	Any two subjects
BSc (Quantity Surveying) (A limited number of students are selected. An interview takes place)	25	Comply with NSC minimum requirements; ADDITIONALLY one of these languages must be Afrikaans OR English at level 5 (60-69%).	4 (50-59%)	4 (50-59%) (Excluded when calculating the APS)	4 (50-59%) for any one of the following subjects: Physical Science and/or Accounting	Any two subjects
BSc (Construction Management) (A limited number of students are selected)	25	Comply with NSC minimum requirements; ADDITIONALLY one of these languages must be Afrikaans OR English at level 5 (60-69%).	4 (50-59%)	4 (50-59%) (Excluded when calculating the APS)	4 (50-59%) for any one of the following subjects: Physical Science or Accounting	Any two subjects
BT&RP (Town and Regional Planning) (A limited number of students are selected)	24	Comply with NSC minimum requirements; ADDITIONALLY one of these languages must be Afrikaans OR English at level 4 (50-59%).	4 (50-59%)	4 (50-59%) (Excluded when calculating the APS)	Any three subjects	

School of Information Technology – Minimum requirements

Degree	APS	Group A			Group B	
		Two Languages	Mathe-matics	Life Orientation	Information Technology*	2 Other subjects
BIT (Information Technology)	27	Comply with NSC minimum requirements; ADDITIONALLY one of these languages must be Afrikaans OR English at level 5 (60-69%).	5 (60-69%)	4 (50-59%) (Excluded when calculating the APS)	5 (60-69%) or pass COS 130 presented during Summer School	Any two subjects
BSc (CS) (Computer Science)	27	Comply with NSC minimum requirements; ADDITIONALLY one of these languages must be Afrikaans OR English at level 5 (60-69%).	5 (60-69%)	4 (50-59%) (Excluded when calculating the APS)	5 (60-69%) or pass COS 130 presented during Summer School	Any two subjects
* Candidates who comply with all requirements but not with the minimum achievement rating for Information Technology can obtain special permission from the Heads of the Departments to register for the above-mentioned degrees.						
BIS Multimedia	24	Comply with NSC minimum requirements; ADDITIONALLY one of these languages must be Afrikaans OR English at level 4 (50-59%).	4 (50-59%)	4 (50-59%) (Excluded when calculating the APS)	4 (50-59%) or pass COS 130 presented during Summer School	Any two subjects
* Candidates who comply with all requirements but not with the minimum achievement rating for Information Technology can obtain special permission from the Heads of the Departments to register for the above-mentioned degrees.						
BSc (IT) Information and Knowledge Systems	24	Comply with NSC minimum requirements; ADDITIONALLY one of these languages must be Afrikaans OR English at level 4 (50-59%).	4 (50-59%)	4 (50-59%) (Excluded when calculating the APS)	4 (50-59%) or pass COS 130 presented during Summer School	Any two subjects
* Candidates who comply with all requirements but not with the minimum achievement rating for Information Technology can obtain special permission from the Heads of the Departments to register for the above-mentioned degrees.						

Degree	APS	Group A			Group B
		Two Languages	Mathematics or Mathematical Literacy	Life Orientation	3 Other subjects
BIS (Information Science)	24	Comply with NSC minimum requirements; ADDITIONALLY one of these languages must be Afrikaans OR English at level 4 (50-59%).	**3 (40-49%)	4 (50-59%) (Excluded when calculating the APS)	Any three subjects
	** If Informatics is selected as a subject at first-year level, an achievement rating of 4 (50-59%) must be obtained for Mathematics.				
BIS (Publishing)	24	Comply with NSC minimum requirements; ADDITIONALLY one of these languages must be Afrikaans OR English at level 4 (50-59%).	3 (40-49%)	4 (50-59%) (Excluded when calculating the APS)	Any three subjects

FACULTY OF NATURAL AND AGRICULTURAL SCIENCES

1. A valid National Senior Certificate with admission for degree purposes.
2. It is recommended that all applicants write the UP Admissions Test.
3. Minimum subject and level requirements

Degree	APS	Group A			Group B	
		Two Languages	Mathematics	Life Orientation	Physical Science	2 Other subjects
BSc Biological Sciences (All the degrees, including Medical Sciences and Veterinary Biology, but excluding Soil Science)	30	Comply with NSC minimum requirements; ADDITIONALLY one of these languages must be Afrikaans OR English at level 4 (50-59%).	4 (50-59%)	4 (50-59%) (Excluded when calculating the APS)	4 (50-59%)	Any two subjects
<p>There are only 72 places in the first year of BSc Medical Sciences. Students who apply for Medical Sciences as their first choice before 30 September will be admitted until the places have been filled. Students who indicate it as their second choice will be put on a waiting list and will be considered in January of the first year of study, if places are available.</p> <p>Selection to the third year of BSc: Veterinary Biology takes place after completion of all the prescribed modules of the first two years of study and after the completed second year of study.</p>						
BSc Soil Science	30	Comply with NSC minimum requirements; ADDITIONALLY one of these languages must be Afrikaans OR English at level 4 (50-59%).	5 (60-69%)	4 (50-59%) (Excluded when calculating the APS)	4 (50-59%)	Any two subjects
BSc Extended Programme (Veterinary Biology) Compulsory admissions test	24	Comply with NSC minimum requirements; ADDITIONALLY one of these languages must be Afrikaans OR English at level 4 (50-59%).	4 (50-59%)	4 (50-59%) (Excluded when calculating the APS)	4 (50-59%)	Any two subjects

BSc Extended Programme (Biological and Natural Sciences) Compulsory admissions test	24	Comply with NSC minimum requirements; ADDITIONALLY one of these languages must be Afrikaans OR English at level 4 (50-59%).	4 (50-59%)	4 (50-59%) (Excluded when calculating the APS)	4 (50-59%)	Any two subjects
BSc Natural Sciences/Physical Sciences (Geography, Geology, Environment and Engineering Geology, Meteorology, Environmental Science, Chemistry, Exploration Geophysics, Physics, Geoinformatics)	30	Comply with NSC minimum requirements; ADDITIONALLY one of these languages must be Afrikaans OR English at level 4 (50-59%).	5 (60-69%)	4 (50-59%) (Excluded when calculating the APS)	4 (50-59%)	Any two subjects
BConsumer Science	30	Comply with NSC minimum requirements; ADDITIONALLY one of these languages must be Afrikaans OR English at level 4 (50-59%).	4 (50-59%)	4 (50-59%) (Excluded when calculating the APS)	Any three subjects	
	24	Students who comply with Umalusi certification, the subject requirements and a minimum APS of 24 must write the admissions test to be considered for possible admission by the Admissions Committee.				

Degree	APS	Group A			Group B	
		Two Languages	Mathe- matics	Life Orientation	Physical Science	2 Other subjects
BConsumer Science (Ed)	30	Comply with NSC minimum requirements; ADDITIONALLY one of these languages must be Afrikaans OR English at level 4 (50-59%).	4 (50-59%)	4 (50-59%) (Excluded when calculating the APS)	Any three subjects	
	24	Students who comply with Umalusi certification, the subject requirements and a minimum APS of 24 must write the admissions test to be considered for possible admission by the Admissions Committee.				
Degree	APS	Group A			Group B	
		Two Languages	Mathematics	Life Orientation	3 Other subjects	
BSc Mathematical Sciences (Applied Mathe- matics, Mathe- matics, Mathe- matical Statistics)	30	Comply with NSC minimum requirements; ADDITIONALLY one of these languages must be Afrikaans OR English at level 4 (50-59%).	5 (60-69%)	4 (50-59%) (Excluded when calculating the APS)	Any three subjects	
	Candidates who do not comply with these entrance requirements may be considered for the extended programme.					
BSc Mathematical Sciences (Actuarial and Financial Mathematics)	30	Comply with NSC minimum require- ments; ADDITIONALLY one of these languages must be Afrikaans OR English at level 4 (50-59%).	6 (70-79%)	4 (50-59%) (Excluded when calculating the APS)	Any three subjects	
	Candidates who do not comply with these entrance requirements may be considered for the extended programme.					
BSc: Extended Programme (Mathematical Sciences) Compulsory admissions test	24	Comply with NSC minimum requirements; ADDITIONALLY one of these languages must be Afrikaans OR English at level 4 (50-59%).	4 (50-59%)	4 (50-59%) (Excluded when calculating the APS)	Any three subjects	

Degree	APS	Group A			Group B	
		Two Languages	Mathematics	Life Orientation	Physical Science	2 Other subjects
BSc(Agric)	30	Comply with NSC minimum requirements; ADDITIONALLY one of these languages must be Afrikaans OR English at level 4 (50-59%).	4 (50-59%)	4 (50-59%) (Excluded when calculating the APS)	4 (50-59%)	Any two subjects
BSec(Ed)(Sci)	30	Comply with NSC minimum requirements; ADDITIONALLY one of these languages must be Afrikaans OR English at level 4 (50-59%).	5 (60-69%)	4 (50-59%) (Excluded when calculating the APS)	4 (50-59%)	Any two subjects

FACULTY OF EDUCATION

1. A valid National Senior Certificate with admission for degree purposes.
2. Minimum subject and level requirements

Degree	APS	Group A			Group B
		Two Languages	Mathematics or Mathematical Literacy	Life Orientation	3 Other subjects
All BEd degrees for learners with endorsement	21 with Mathematics or 22 with Mathematical Literacy	4 (50-59%) in <u>two</u> languages at home or first additional language levels: Afrikaans and English or Afrikaans/English and another recognised language	2 (30-39%) in Mathematics or 3 (40-49%) in Mathematical Literacy	4 (50-59%) (Excluded when calculating the APS)	Any three subjects
	Learners with an APS of 19 or 20 will be considered by the Admissions Committee of the Faculty after completion of the UP Admissions Test.				
All BEd degrees for learners without endorsement	21 with Mathematics or 22 with Mathematical Literacy	4 (50-59%) in <u>two</u> languages at home or first additional language levels: Afrikaans and English or Afrikaans/English and another recognised language	2 (30-39%) in Mathematics or 3 (40-49%) in Mathematical Literacy	4 (50-59%) (Excluded when calculating the APS)	4 (50-59%) in one additional subject and 3 (40-49%) in two other subjects
	Learners with an APS of 19 or 20 will be considered by the Admissions Committee of the Faculty after completion of the UP Admissions Test.				

FACULTY OF LAW

- 1. A valid National Senior Certificate with admission for degree purposes.
- 2. Minimum subject and level requirements

Degree	APS	Group A			Group B
		Two Languages	Mathematics or Mathematical Literacy	Life Orientation	3 Other subjects
LLB	24	4 (50-59%) in <u>two</u> languages (at Home Language Level or First Additional Language levels): Afrikaans and English or Afrikaans/English and another recognised language	3 (40-49%)	4 (50-59%) (Excluded when calculating the APS)	Any three subjects

FACULTY OF THEOLOGY

1. A valid National Senior Certificate with admission for degree purposes.
2. Minimum subject and level requirements

Degree	APS	Group A			Group B
		Two Languages	Mathematics or Mathematical Literacy	Life Orientation	3 Other subjects
All Theology degrees	22	Comply with NSC minimum requirements; ADDITIONALLY one of these languages must be Afrikaans OR English at level 4 (50-59%).	3 (40-49%)	4 (50 – 59%) (Life Orientation is excluded when calculating the APS)	4 (50%-59) in 3 additional 20-credit subjects and 3 (40-49%) in one subject
Diploma in Theology	16	Afrikaans or English (at Home Language level or First Additional Language levels)	2 (30-39%)	4 (50 – 59%) (Life Orientation is excluded when calculating the APS)	3 (40%-49) in 4 additional 20-credit subjects and 2 (30-39%) in one subject

FACULTY OF VETERINARY SCIENCE

- 1. A valid National Senior Certificate with admission for degree purposes.
- 2. Minimum subject and level requirements

Degree	APS	Group A			Group B		
		Two Languages	Mathematics	Life Orientation	Life Sciences	Physical Science	1 of 2 other subjects
University Diploma in Veterinary Science	22	Comply with NSC minimum requirements; ADDITIONALLY one of these languages must be English at level 4 (50-59%).	4 (50-59%)	4 (50-59% (Life orientation is excluded when calculating the APS)	4 (50-59%)	4 (50-59%)	3 (40-49%)

The APS is calculated using English, Life Sciences, Mathematics, Physical Sciences and the two best alternative subjects.

FACULTY OF ECONOMIC AND MANAGEMENT SCIENCES

1. A valid National Senior Certificate with admission for degree purposes.
2. Minimum subject and level requirements

BCom degrees

Degree	APS	Group A			Group B
		Two Languages	Mathematics	Life Orientation	3 Other subjects
All BCom degrees excluding the exceptions mentioned below	24	Comply with NSC minimum requirements; ADDITIO-NALLY one of these languages must be Afrikaans OR English at level 4 (50-59%).	3 (40-49%)	4 (50-59%) (Excluded when calculating the APS)	Any three subjects
Accounting Sciences	28		5 (60-69%)		
Investment Management					
Informatics	26		4 (50-59%)		
Financial Management Sciences					
Econometrics	26				
Statistics					

BAdmin degrees

Degree	APS	Group A			Group B
		Two Languages	Mathematics or Mathematical Literacy	Life Orientation	3 Other subjects
Public Management and International Relations	23	Comply with NSC minimum requirements; ADDITIONALLY one of these languages must be Afrikaans OR English at level 4 (50-59%).	Mathematics or Mathematical Literacy	4 (50-59%) (Excluded when calculating the APS)	Any three subjects

FACULTY OF HUMANITIES

1. A valid National Senior Certificate with admission for degree purposes.
2. Minimum subject and level requirements

Degree	APS	Group A			Group B
		Two Languages	Mathematics or Mathematical Literacy	Life Orientation	3 Other subjects
All degree programmes in the Faculty, except BA (Law) and packages/ programmes with specified selection criteria	24	Comply with NSC minimum requirements; ADDITIONALLY one of these languages must be Afrikaans OR English at level 4 (50-59%).	2 (30-39%)	4 (50-59%) (Excluded when calculating the APS)	Any three subjects
BA (Law)	24	Comply with NSC minimum requirements; ADDITIONALLY one of these languages must be Afrikaans OR English at level 4 (50-59%).	3 (40-49%)	4 (50-59%) (Excluded when calculating the APS)	Any three subjects

The Client Service Centre (CSC)

The Client Service Centre (CSC) at the University of Pretoria (UP) is geared to offer you a quick and efficient service so that you will have enough time to enjoy being a student!

Services provided by the CSC are:

- Attending to all general enquiries;
- Providing information on residences;
- Assisting with the completion of applications;
- Acceptance of payments and the provision of information on student accounts;
- The provision of information on bursaries, loans and study financing;
- The issuing of student identity cards;
- Giving advice on career placement of students;
- Providing information on study programmes.

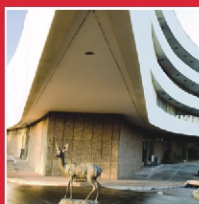
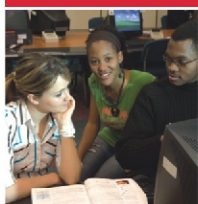
Other sources of information:

- www.up.ac.za for Faculty websites;
- www.up.ac.za/study for Faculty yearbooks; and
- www.up.ac.za/up/web/en/up/index/ for more information on Faculties, Schools and Academic Departments.

* This information is subject to change



UNIVERSITEIT VAN PRETORIA
UNIVERSITY OF PRETORIA



Contact numbers at the CSC:

Call Centre: +27 (0)12 420 3111

Fax: +27 (0)12 420 4555 • E-mail: csc@up.ac.za • Website: www.up.ac.za

Postal address: Client Service Centre
University of Pretoria
Lynnwood Road
Pretoria
0002

Published: February 2007