

Fakulteit Geesteswetenskappe
Faculty of Humanities

Department of Speech-Language Pathology and
Audiology
Established in 1959

ANNUAL REPORT 2014

Editors: Prof. Bart Vinck
Prof. Alta Kritzinger
Co-workers: Departmental staff



UNIVERSITEIT VAN PRETORIA
UNIVERSITY OF PRETORIA
YUNIBESITHI YA PRETORIA

Denkleiers • Leading Minds • Dikgopolo tša Dihlalefi

TABLE OF CONTENTS

	PAGE
1. THE YEAR 2014 IN RETROSPECT	3
2. DEPARTMENTAL MANAGEMENT STRUCTURE	4
3. DEPARTMENTAL STAFF	5
• Major achievements by staff members	9
• Staff serving membership: Committees of the University of Pretoria	10
• Staff serving membership: Committees, associations, boards, councils and task groups	10
4. STUDENTS DEMOGRAPHICS AND ACHIEVEMENTS	12
• Undergraduate students	12
5. TEACHING AND LEARNING	16
• Clinical contexts utilized for student training	16
6. RESEARCH	17
• Peer-reviewed articles by staff members	17
• Publication of books	18
• International conference papers by staff members	18
• Papers delivered by staff members at national conferences	19
• Achievements by students	19
• Research reports by final year students	20
• Postgraduate research: MCommunication Pathology and DPhil	21
7. COMMUNITY ENGAGEMENT	22
• Continuous professional development seminars presented by the Department of Speech-Language Pathology and Audiology	22
• Department of Speech-Language Pathology and Audiology as continuous professional development accreditor during 2014	22
• Community engagement activities undertaken by staff members	23
8. SPECIALIST CLINIC: Clinic for High-Risk Babies (CHRIB)	24
9. UNIVERSITY OF PRETORIA COCHLEAR IMPLANT UNIT (UP-CIU)	25
10. INTERNATIONAL VISITS, VISITORS AND COLLABORATION	27
• International visits by members of staff	27
• International visitors	27

1. THE YEAR 2014 IN RETROSPECT

In 2014 important changes in our Faculty of Humanities occurred again. Professor Norman Duncan was appointed as the new Vice-Principal Academic and resigned from his position as Dean of the Faculty. Professor Hennie Stander was appointed as the acting Dean for a period of 1 year until the new Dean is appointed.

There were also changes to the permanent staff compliment in the Department. Ms Esedra Strasheim was added to the SPP staff in a 25 hours position and Professor Anita Van der Merwe retired and was appointed as Emeritus Professor. We would like to thank Anita for her achievements in the field of Speech-Language Pathology and for all her achievements in the Department.

The new approach and template for research and postgraduate studies succesfully led to a high increase of research output in accredited journals in 2014. Dr. Baraba Heinze and Dr. Leigh Biagio defended with good success their PhD's in the Department. For the first time the public defence model was used where the candidates had to defend their doctorate in front of a live jury.

In addition, most if not all of the other younger staff members are in the process of writing up their theses so that in a few years time more than 90% of the academic staff will have a PhD as their highest qualification.

I want to thank all academic and support staff for their exceptional achievements and their contributions to the success of our Department.

Professor Bart Vinck

HEAD: DEPARTMENT OF SPEECH-LANGUAGE PATHOLOGY AND AUDIOLOGY

2. DEPARTMENTAL MANAGEMENT STRUCTURE

The participatory management structure of the department is illustrated in Figure 2.1. All members of staff share responsibility for the effective functioning of the department as each has designated functions within the structure.

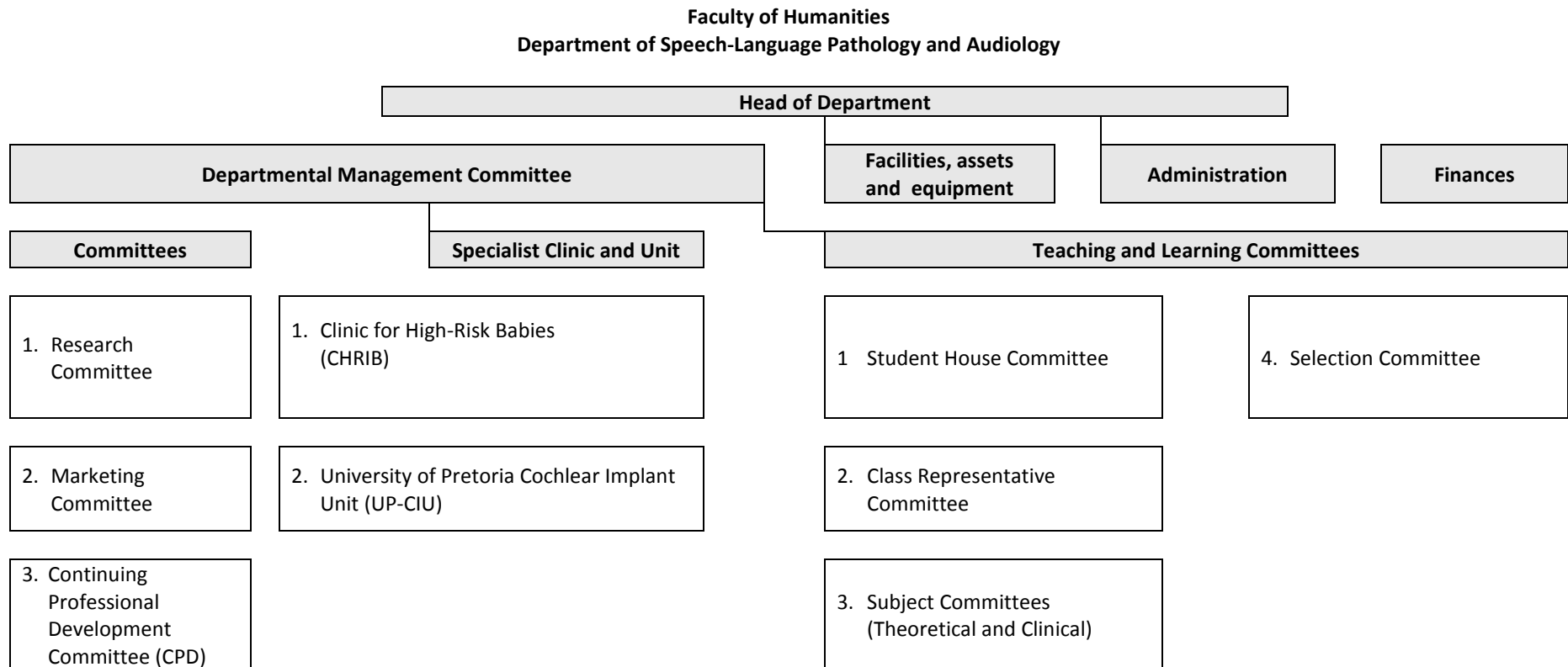
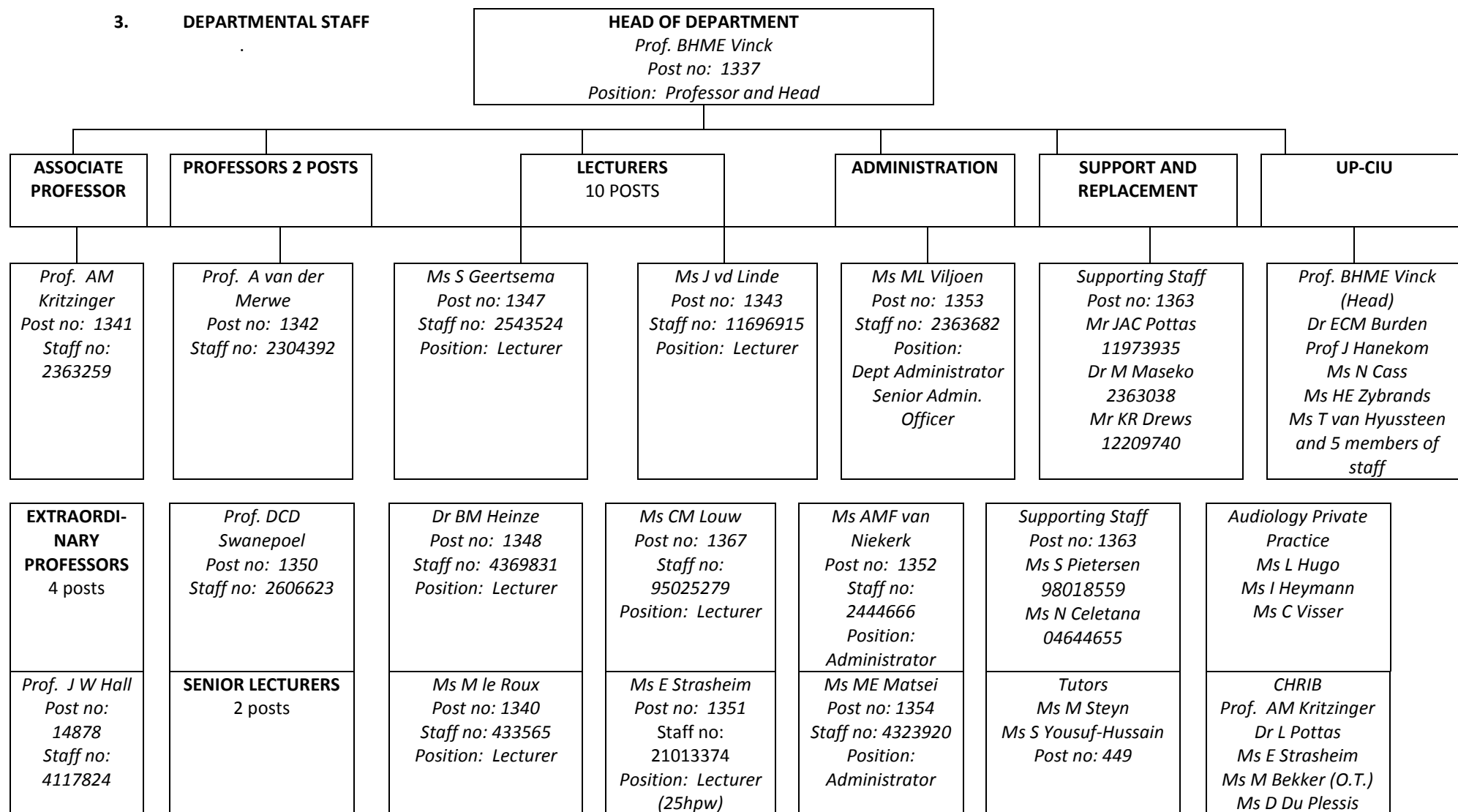


Figure 2.1: Departmental management structure

3. DEPARTMENTAL STAFF



<p><i>Prof R Eikelboom</i></p>	<p><i>Dr L Pottas</i> Post no: 1349 Staff no: 2446367 Position: Senior Lecturer</p>	<p><i>Ms T le Roux</i> Post no: 1346 Staff no: 01289055 Position: Lecturer</p>	<p><i>Ms UL Zsilavec</i> Post no: 0886 Staff no: 2347288 Position: Lecturer</p>	<p><i>Mr K Modise</i> Post no: 7261 Staff no: 2635178 Position: Administrative assistant</p>		<p><i>Ms H vd Berg</i> (Community Health Nurses)</p>
<p><i>Prof C Laurent</i></p>	<p><i>Dr ME Soer</i> Post no: 676 Staff no: 2316951 Position: Senior Lecturer</p>	<p><i>Ms L Biagio</i> Post no: 1345 Staff no: 94256838 Position: Lecturer</p>	<p>Post no: 20392 Clinical supervisors Dept of Education funding <i>Ms C Louw</i> <i>Ms R Mosca</i> <i>Ms H Mapisa</i> <i>Ms B Pillay</i></p>	<p><i>Mr J Schoeman</i> Post no: 8828 Staff no: 4292987 Position: Permanent Part-time Messenger 15hpw</p>		
		<p><i>Ms F Mahomed</i> Post no: 12009 Staff no: 27038158 Position: Lecturer</p>				

Figure 3.1: Department of Speech-Language Pathology and Audiology staff 2014



Departmental staff at the year-end function on campus, 21 November 2014

Front row: L Biagio, S Geertsema, U Zsilavec, ME Soer, B Vinck, A van der Merwe, L Pottas, D Swanepoel, B Heinze

Second row: F Mahomed, M Steyn, K Modise, R Viljoen, A van Niekerk, S Yousuf-Hussain, C Louw

Last row: N Naude, E Strasheim, E Zybrands, N Cass, M le Roux, T le Roux, A Louw, J van der Linde, M Christoforou

Complete list of departmental staff 2014**Senior staff**

Prof. BHME Vinck, Prof. AM Kritzinger, Dr L Pottas, Dr ME Soer, Prof. DCD Swanepoel, Prof. A van der Merwe, Ms UL Zsilavec

Junior staff

Ms L Biagio, Ms S Geertsema, Dr BM Heinze, Ms M le Roux, Ms T le Roux, Ms CM Louw, Ms F Mahomed, Ms J van der Linde, Ms E Strasheim

Part-time staff

Dr M Maseko, Mr C Drews, Ms C Louw, Ms H Mapisa, Ms R Mosca, Ms S Pietersen, Mr C Pottas, Ms N Celetana

Departmental tutors

Ms M Christoforou, Ms M Steyn

Administrative staff

Ms M Matsei, Mr K Modise, Ms G Nel, Mr JJ Schoeman, Ms AMF van Niekerk, Ms R Viljoen

Pretoria Cochlear Implant Unit:

Ms M Beukes, Ms N Cass, Ms T van Zyl, Ms E Zybrands

Private audiologists:

Ms I Heymann, Ms L Hugo, Ms C Visser

Cleaning staff:

Ms S Mokgalaka, Ms T Ratau

Table 3.1: Major achievements by staff members 2014

Staff member	Achievements
Ms L Biagio	- 2014 SAAA PhD Research Award
Ms S Geertsema	- NRF Sabbatical Grant
Dr BM Heinze	- Obtained doctoral degree
Ms M Le Roux	- NRF Sabbatical Grant
Prof. DCD Swanepoel	<p><i>hearScreen</i>TM smartphone hearing screening innovation (inventors: Prof De Wet Swanepoel & Dr Herman Myburgh) reached the top 21 finalists for the Innovation Prize for Africa 2014 Award. African Innovation Foundation (innovationprizeforafrica.org).</p> <p><i>hearScreen</i>TM smartphone hearing screening innovation (inventors: Prof De Wet Swanepoel & Dr Herman Myburgh) awarded the 2013/2014 National Science and Technology Forum (NSTF) / BHP-Billiton Award in the category of research leading to an innovation.</p> <p>2014 AU-TWAS Young Scientist National Award in the category of Basic Sciences, Technology and Innovation (R50 000). The Academy of Science of South Africa (ASSAf), the Department of Science and Technology (DST), the Academy of Sciences for the Developing World (TWAS) and the African Union Commission (AUC) have entered into an agreement to award an AU TWAS Young Scientists National Award on an annual basis.</p> <p>Master's degree student supervised (Ms Lucia Scheepers) wins the <i>2014 Faculty Researcher of the Year (Applied Social Sciences) Award</i> for Research Master's degree category. 23 September 2014.</p> <p><i>hearScreen</i>TM smartphone hearing screening innovation (inventors: Prof De Wet Swanepoel & Dr Herman Myburgh) was awarded third prize in the 2014 SAB Foundation Social Innovation Awards (Prize money of R350 000).</p> <p><i>hearScreen</i>TM smartphone hearing screening innovation (inventors: Prof De Wet Swanepoel & Dr Herman Myburgh) was awarded 4th prize in the 2014 Social Entrepreneurship Festival of Ideas pitching event (Prize money of R15 000).</p> <p>Best Paper Award for a presentation at the 5th Annual Meeting (SFT-14) of the Australasian Telehealth Society, Adelaide, South Australia, 17-18 November 2014 [Eikelboom RH, Swanepoel D, Myburgh H, Howe D, Mahomed F. HearScreen – a Smartphone hearing screening app with integrated quality control and data management. SFT-14, 5th Annual Meeting of the Australasian Telehealth Society, Adelaide, South Australia, 17-18 November 2014]</p> <p>Valerie Alder Research Prize awarded (R50 000) by the Ear Science Institute Australia (ESIA) to a researcher in the field of ear and hearing science for the best scientific paper for 2014. [Awarded for the following paper: Swanepoel D, Eikelboom RH, Margolis RH (2014). Revisiting tympanometry screening in school-entry children 5 to 7 years of age. <i>Journal of the American Academy of Audiology</i>, IN PRESS]</p>

Table 3.2: Staff serving membership: Committees of the University of Pretoria

Staff member	Committee	Portfolio
Dr BM Heinze	• Marketing Committee: Faculty of Humanities	• Member
Prof. AM Kritzinger	• Teaching and Learning Committee: Faculty of Humanities	• Member
Ms F Mahomed	• Marketing Committee: Faculty of Humanities	• Member
Dr L Pottas	• Research Committee: Faculty of Humanities	• Member
Prof. DCD Swanepoel	• Postgraduate Research Committee: Faculty of Humanities	• Member
Ms J van der Linde	• Research Information System: Faculty of Humanities	• Member
Prof. BHME Vinck	<ul style="list-style-type: none"> • Dean's Advisory Committee: Faculty of Humanities • Cluster of Social Sciences in the Faculty of Humanities 	<ul style="list-style-type: none"> • Member • Chair

Table 3.3: Staff serving membership: Committees, associations, boards, councils, task groups

Staff Member	Body	Appointed position
Ms S Geertsema	The National Red Apple Dyslexia Association	Appointed board member
Dr BM Heinze	Journal of HIV for Clinical and Scientific Research	Editorial board member
	Clinics African Journal of AIDS Research	Reviewer
	SAAA (South African Association of Audiologists)	Co-adjudicator for annual Audiology Award
Prof. AM Kritzinger	South African Neonate, Infant and Toddler Support Association (SANITSA)	Board Member: Speech-Language Therapy
	South African Journal of Communication Disorders	Reviewer
	Represented the Department at the Interuniversity meeting 21 & 22 August, Pretoria	Representative
Ms F Mahomed	International Journal of Audiology South African Journal of Communication Disorders	Reviewer
Dr L Pottas	South African Speech-Language Hearing Association (SASLHA)	Member: Ethics and Standards Committee
Dr ME Soer	South African Speech-Language Hearing Association (SASLHA)	Member: Ethics and Standards Committee
	Society of Hearing Aid Acousticians (SHAA)	Lifelong honorary member
	South African Bureau of Standards	Member: Working Group 43, Acoustics
	Represented the Department at the Interuniversity meeting 21 & 22 August, Pretoria	Representative
Ms E Strasheim	South African Neurodevelopment	Chair: North Gauteng branch committee

Staff Member	Body	Appointed position
	Therapy Association (SANDTA)	
Prof. DCD Swanepoel	World Health Organization (WHO), International Classification of Functioning and Health (ICF) steering committee	Member, representing Africa for the development of a Core Set of questions for classification of hearing impairment as a chronic health condition (2008 – 2011)
	International Society of Audiology (ISA)	Co-chair of the Task Force of the American Academy of Audiology for Tele-Audiology
	International Society of Audiology (ISA)	Executive Board member, President-Elect
	South African Association for Audiology	Ethics committee member
	International Journal of Audiology The International Journal of Health Science Education Journal of Speech, Language and Hearing Research (Guest editor)	Editorial board member
	International Journal of Audiology International Journal of Pediatric Otorhinolaryngology Journal of Occupational and Environmental Hygiene Ear and Hearing South African Medical Journal South African Journal of Communication Disorders Journal of Telemedicine and Telecare Telemedicine and e-Health Journal of the American Academy of Audiology BMJ Open Journal of Medical Internet Research	Reviewer
Prof. A van der Merwe	South African Journal of Communication Disorders American Journal of Speech-Language Pathology Journal of Speech, Language and Hearing Research	Reviewer
Ms UL Zsilavec	Department of Health	Liaison re community service year
	South African Speech-Language Hearing Association (SASLHA)	Chair: Ethics and Standards Committee

Tables 4.1 to 4.4

STUDENT DEMOGRAPHICS 2014

Table 4.1

UNIVERSITY OF PRETORIA

BIRAP report: Registrations per Academic Plan, Academic Level, Race and Gender(Alle registrations, viz cancellations included) : Source - PSCS

Date run: 2014/05/23

				Asian		Asian Total	% Of Grand Total	Black		Black Total	% Of Grand Total	Coloured	Coloured Total	% Of Grand Total	White		White Total	% Of Grand Total	Other	Othe r Total	% Of Grand Total	GRAND TOTAL
Department	Academic Plan Code	Academic Plan	Academic Level Code	Male	Female			Female	Male						Female	Male			Female			
00122 - Speech-Language Pathlgy + Aud	01122555	Advanced Diploma: Hearing Aid Acoustics	1					1		1	12.5%				4	3	7	87.5%				8
			FIN	2		2	20.0%		2	2	20.0%				3	3	6	60.0%				10
	01122555 Total			2		2	11.1%	1	2	3	16.7%				7	6	13	72.2%				18
	01135021	BCommunication Pathology: Speech- Language Pathology	1		4	4	14.8%	3		3	11.1%				19		19	70.4%	1	1	3.7%	27
			2		2	2	6.3%								29	1	30	93.8%				32
			3		2	2	5.1%					1	1	2.6%	36		36	92.3%				39
			FIN		1	1	3.7%	1		1	3.7%				25		25	92.6%				27
	01135021 Total				9	9	7.2%	4		4	3.2%	1	1	0.8%	109	1	110	88.0%	1	1	0.8%	125
	01135031	BCommunication Pathology: Audiology	1		2	2	7.7%	1		1	3.8%				22	1	23	88.5%				26
			2		3	3	7.1%	2	1	3	7.1%				34	2	36	85.7%				42
			3		4	4	15.4%	5		5	19.2%	1	1		15	1	16	61.5%				26
			FIN		1	1	4.0%	1		1	4.0%				22	1	23	92.0%				25
	01135031 Total				10	10	8.4%	9	1	10	8.4%	1	1		93	5	98	82.4%				119
	01135041	BCommunication Pathology: Speech-	1												1		1	100.0%				1
	01135041 Total														1		1	100.0%				1
Grand Total				2	19	21	8.0%	14	3	17	6.5%	2	2	0.8%	210	12	222	84.4%	1	1	0.4%	263

Table 4.2
UNIVERSITY OF PRETORIA

BIRAP Report: Contact education registrations specific department per home language (Cancellations after 1 March included): Source: PSCS

Date run: 9/4/2014

		Home Language													
Academic Plan	Academic Level Code	Afrikaans		Afrikaans Total	English	Other Language								Other Language Total	Grand Total
		Afrikaans	Afrikaans / English		English	German	IsiXhosa	IsiZulu	Other Language	Sepedi	Setswana	SiSwati	Xitsonga		
Advanced Diploma: Hearing Aid Acoustics	01	13		13	5				3					3	21
	FIN	8		8	3			1	1					2	13
Advanced Diploma: Hearing Aid Acoustics Total		21		21	8			1	4					5	34
BCommunication Pathology: Speech-Language Pathology	01	9	4	13	9		1	1		1				3	25
	02	15	3	18	14										32
	03	24	1	25	16	2					1			3	44
	FIN	13	1	14	9										23
BCommunication Pathology: Speech-Language Pathology		61	9	70	48	2	1	1		1	1			6	124
BCommunication Pathology: Audiology	01	17	3	20	7							1		1	28
	02	23	2	25	13	1		2				1		4	42
	03	11		11	9	2		1		1		1	1	6	26
	FIN	16		16	8						1			1	25
BCommunication Pathology: Audiology Total		67	5	72	37	3		3		1	1	3	1	12	121
BCommunication Pathology: Speech-Language Path and Aud	01		1	1											1
BCommunication Pathology: Speech-Language Path and Aud			1	1											1
Grand Total		149	15	164	93	5	1	5	4	2	2	3	1	23	280

Table 4.3

UNIVERSITY OF PRETORIA

BIRAP Report: Undergraduate registrations in a specific department per race and gender (Cancellations after 1 March included): Source: PSCS

Date run: 2014/05/22

TERM: 2014

Academic Plan Code	Academic Plan	Asian		Asian Total	% Of Total	Black		Black Total	% Of Total	Coloured	Coloured Total	% Of Total	White		White Total	% Of Total	Other	Other Total	% Of Total	Grand Total
		Female	Male			Female	Male			Female	Total		Female	Male			Female	Total		
1135021	BCommunication Pathology: Speech-Language Pathology	9		9	7.2%	4		4	3.2%	1	1	0.8%	109	1	110	88.0%	1	1	0.8%	125
1135031	BCommunication Pathology: Audiology	10		10	8.4%	9	1	10	8.4%	1	1	0.8%	93	5	98	82.4%				119
1122555	Advanced Diploma: Hearing Aid Acoustics		2	2	11.1%	1	2	3	16.7%			0.0%	7	6	13	72.2%				18
1135041	BCommunication Pathology: Speech-Language Path and Aud												1		1	100.0%				1
Grand Total		19	2	21	8.0%	14	3	17	6.5%	2	2	0.8%	210	12	222	84.4%	1	1	0.4%	263

Table 4.4

NAME OF UNIVERSITY: PRETORIA													
DEMOGRAPHIC PROFILE OF UNDERGRADUATE STUDENTS													
	African			Coloured			Indian			White			Total
	F	M	%	F	M	%	F	M	%	F	M	%	
Year of study													
1 st SLT	4	0	15%	0	0	0%	4	0	15%	19	0	70%	27
1st Aud	1	0	3.80%	0	0	0%	2	0	7.70%	22	1	88.50%	26
2 nd SLT	0	0	0%	0	0	0%	2	0	6%	29	1	94%	32
2nd Aud	2	1	7.10%	0	0	0%	3	0	7.10%	34	2	85.70%	42
3 rd SLT	0	0	0%	1	0	2.60%	2	0	5%	36	0	92%	39
3rd Aud	5	0	19.20%	1	1	3.80%	4	0	15.40%	15	1	61.50%	26
4 th SLT	1	0	4%	0	0	0%	1	0	4%	25	0	93%	27
4th Aud	1	0	4%	0	0	0%	1	0	4%	22	1	92%	25
Total													244

5. TEACHING AND LEARNING

Table 5.1: Clinical contexts utilized for student training during 2014

Clinical training sites	Modules
1. Tertiary hospitals: Steve Biko Academic hospital, 1 Military hospital, Dr George Mukhari hospital, Chris Hani Baragwanath hospital, Universitas hospital, Charlotte Maxeke hospital, Red Cross War Memorial Children's hospital, Groote Schuur hospital, Greys hospital, Pelenomi hospital, Kalafong hospital	KMP 381 ODL 482
2. Secondary level hospitals King Edward VIII hospital, Leratong hospital, 1Military hospital, Tshwane District hospital, Tambo Memorial hospital, Witbank hospital, Dihlabeng hospital, Kimberley hospital, Coronation hospital, FH Odendaal hospital	KMP 281 381 482 ODL 281 482
3. Private hospitals and Centres Eugene Marais hospital, Femina hospital, Kloof hospital, Little Company of Mary hospital, Medforum hospital, Muelmed Rehabilitation Centre	KMP 381 483 ODL 382 SPP 482
4. Primary health care clinics Daspoort Poli Clinic, Mamelodi Stanza II Clinic	KMP 483
5. Specialized clinics/centres Facial Cleft Deformities Clinic, University of Pretoria Cochlear Implant Unit, Consultation Voice Clinic, CHRIB, Vestibular Laboratory, Whispers Early Childhood Development Centre	KMP 110 482 ODL 481 482 SPP 181 210 482
6. Care centres Mamelodi Centre for children with multiple disabilities	KMP 483
7. Primary schools Lindopark Primary School, Riviera Laerskool, Meyerspark Primary School, Brooklyn Primary School, Garsfontein Laerskool, Oost-Eind Skool, Tuinrand Laerskool	KMP 120 281 483 ODL 281 SPP 281 381 382 482
8. Special schools Sonitus School, New Hope School, Pretoria School, Via Nova School, Alma Centre	ODL 481 482 SPP 481 482
9. Nursery schools Sunnyside pre-primary school, Voetstappies , Chrysalis preschool, Kleinmensies kleuterskool	KMP 120 SPP 281 381
10. Support group Speakeasy	SPP 482
11. Industries Volkswagen: Panel beaters and factories	ODL 281
12. Speech, Voice and Hearing Clinic, Department of Speech-Language Pathology and Audiology	ODL 281 381 382, 482 SPP 481 482
13. CHRIB, Department of Speech-Language Pathology and Audiology	KMP 181 210 220 482 SPP 381
14. Private audiology and speech-language therapy practices HASS, Mariet du Plooy, Hearing Innovations, and various other practices, depending on students' choice	KMP 210 ODL 381 382

6. RESEARCH

Table 6.1: Articles published by staff members

1. Biagio L, Swanepoel D, Laurent C, Lundberg T (2014). Video-otoscopy recordings for diagnosis of childhood ear disease using telehealth at primary health care level. *Journal of Telemedicine and Telecare*, 20(6):300-306.
2. Biagio L, Swanepoel D, Laurent C, Lundberg T (2014). Paediatric otitis media at a primary health care clinic in South Africa. *South African Medical Journal*, 104(6):431-435.
3. Clark JL, Swanepoel D (2014). Technology for Hearing Loss - as We Know It, and as We Dream It. *Disability and Rehabilitation: Assistive Technology*, 9(5):408-413.
4. Degeest S, Corthals P, Vinck BHME, Keppler H (2014). Prevalence and characteristics of tinnitus after leisure noise exposure in young adults. *Noise and Health*, 16(68):26-33.
5. Eikelboom RH, Jayakody D, Swanepoel D, Chang S, Atlas MD (2014). Validation of remote mapping of cochlear implants. *Journal of Telemedicine and Telecare*, 20(4):171-177.
6. Geertsema s, Le Roux M (2014). Engels addisionele taalleerders: Ondersteuning vir fonologiese bewustheidsuitvalle. *Tydskrif vir Geesteswetenskappe*, 54(1):1-15.
7. Granberg S, Pronk M, Swanepoel D, Kramer SE, Hagsten H, Möller C, Hjaldaahl J, Danermark B (2014). The ICF Core Sets for Hearing Loss Project: Functioning and Disability from the Patient Perspective. *International Journal of Audiology*, 53(8):497-506.
8. Granberg S, Swanepoel D, Englund U, Möller C, Danermark B (2014). The ICF Core Sets for Hearing Loss Project: International Expert Survey on Functioning and Disability of Adults with Hearing Loss using the International Classification of Functioning, Disability and Health (ICF). *International Journal of Audiology*, 53(8):497-506.
9. Haeri Mazanderani AF, du Plessis NM, Lumb J, Feucht UD, Myburgh M, Mayaphi SH, Lekalakala MR Swanepoel D, Georgakis H, Avenant T (2014). Recommendations for the medical evaluation of children prior to adoption in South Africa. *South African Medical Journal*, 104(8):544-549.
10. Heinze B, Swanepoel D, Hofmeyr LM, Vinck BM (2014). Vestibular involvement in adults with HIV/AIDS. *Auris Nasus Larynx*, 41(2):160-168.
11. Heinze B, Vinck BM, Swanepoel D, (2014). Does the human immunodeficiency virus influence the vestibulocollic reflex pathways? A comparative study. *Journal of Laryngology & Otology*, 128(9):779-779.
12. Keppler H, Dhooge I, Maes L, Bockstael A, Phillips B, Swinnen F, Vinck BHME (2014). Evaluation of the olivocochlear efferent reflex strength in the susceptibility to temporary hearing deterioration after music exposure in young adults. *Noise and Health*, 16(69): 108-115.
13. Kritzinger A, Van Rooyen E (2014). The effect of formal, neonatal communication-intervention training on mothers in kangaroo care. *African Journal of Primary Health Care and Family Medicine*, doi:10.4102/phcfm.v6i1.657.p1-9.
14. Lundberg T, Biagio L, Laurent C, Sandström H, Swanepoel D (2014). Remote evaluation of video-otoscopy recordings in an unselected pediatric population with an otitis media scale. *International Journal of Pediatric Otorhinolaryngology*, 78(9):1489-1495.
15. Lundie M, Erasmus Z, Zsilavec UL, Van der Linde J (2014). Compilation of a preliminary checklist for the differential diagnosis of neurogenic stuttering. *South African Journal of Communication Disorders*, 61:1-10.

16. Meyer ME, Swanepoel D, le Roux T (2014). National survey of paediatric audiological services for diagnosis in the private health sector of South Africa. *South African Journal of Communication Disorders*, 61(1):1-8. Potgieter JM, Swanepoel D, Heinze B, Hofmeyr LM, Hamersma H (2014). An auditory profile of sclerosteosis. *Journal of Laryngology and Otology*, 128:336-344.
17. Moodley P, Kritzing AM, Vinck BHME (2014). Comparison of educational approaches for Grade R English additional language learning in rural Mpumalanga. *South African Journal of Education*, 34(2). 839-846.
18. Potgieter j, Swanepoel DCD, Heinze BM, Hofmeyr LM, Burger A, Hamersma H (2014). An auditory profile of sclerosteosis. *Journal of Laryngology and Otology*, 128, 336-344.
19. Scheepers L, Swanepoel D, le Roux T (2014). Why parents refuse newborn hearing screening and default on follow-up rescreening - a South African perspective. *International Journal of Pediatric Otorhinolaryngology*, 78(4):652-658.
20. Strauss S, Swanepoel D, Becker P, Eloff Z, Hall JW III (2014). Noise and age related hearing loss - a study of 40 123 South African Gold Miners. *International Journal of Audiology*, 53 S2:S66-75
21. Swanepoel D, Scheepers L, le Roux T (2014). Why parents refuse newborn hearing screening in South Africa. *International Journal of Pediatric Otorhinolaryngology*, 78(7):1197-1198.
22. Swanepoel D, Myburgh HC, Howe D, Mahomed F, Eikelboom RH (2014). Smartphone hearing screening with integrated quality control and data management. *International Journal of Audiology*, 53: 841-849.

Book Chapter

Van der Merwe A, Le Roux M (2014). Dysarthria and apraxia of speech in selected South African languages: Zulu and Tswana. In N Miller & A Lowit (eds). *Motor speech disorders. A cross-language perspective*. Bristol UK: Multilingual matters. (pp125-142).

Table 6.2: International conference papers and posters by staff members 2014

Conference Name	Presentation Title	Presenter/s
XXVIIIth Barany Society Meeting Buenos Aires, Argentina 25-28 May 2014	Paper: Does HIV/AIDS influence the vestibulocollic reflex pathways? A comparative study	BM Heinze
2014 Clinical Aphasiology Conference USA 27-31 May 2014	Paper: What can speech production errors tell us about cross-linguistic processing in bilingual aphasia? Evidence from 4 English/Afrikaans speaking individuals with aphasia	DL Kendall L Edmonds A van Zyl A Odendaal M Steyn A van der Merwe
Communication: The key to success. Conference at Edge Hill University, Lancashire, UK 20 June 2014	Poster: Communication development of toddlers with symptoms of autism in comparison to typical peers	C Dowd J Schickeling AM Kritzing
15 th Symposium of Logopedics and Audiology University of Gent, Belgium 20 October 2014	Paper: Vestibular abnormalities in adults with HIV	BM Heinze

Table 6.3: Papers delivered by staff members at a national conference 2014

Authors	Title of paper	Conference name	Venue	Date
Ms L Biagio	Paediatric otitis media at a primary health care clinic in South Africa Telehealth for primary health care ear disorders: A study in video-otoscopy Video-otoscopy: Recordings for diagnosis for ear disease using Telehealth at primary health care level	The 50th ENT/ SASLHA/ SAAA Congress	Cape Town International Convention Centre, Cape Town	18 to 21 October
Ms M Meyer Prof. A Kritzinger	Ethics in neonatal care: Speech-Language Pathology			
Ms M Steyn Prof. A van der Merwe Prof. DL Kendall	Effects of the speech motor learning approach to treatment of childhood apraxia if speech			
Prof DCD Swanepoel Ms S Kruyt	Update on Telehealth Chairperson of Session 10			
Ms UL Zsilavec	Best practice: managing the young child with fluency disorders Chairperson Session 12			

Table 6.4: Undergraduate student awards 2013

Name	Award
Aaqilah Bhamjee	SASLHA Gauteng Branch Prize – Best final year student in Audiology: Clinical
Meghan Kidson	Susan M Swart Prize – Best final year student in Audiology: Academic
Marissa van der Merwe	SASLHA Gauteng Branch Prize - Best final year student in Speech-Language Pathology: Clinical
Marissa van der Merwe	P De V Pienaar Prize – Best final year student in Speech Pathology: Academic
Leanne Hyams	AB Clemons Award for best research project
Meghan Kidson and Amy Klapwijk	SAAA Prize for the most professional student in Audiology

Table 6.5: Research reports by final year students in Audiology 2014

Topic	Supervisors	Student Names
A comparison of the quality of life of adult bilateral cochlear implant users and adult bilateral hearing aid users	Ms A Louw Dr ME Soer	Jani Steenkamp Marieke Schutte
A comparison of the temporal processing of adult bilateral cochlear implant users and adult bilateral hearing aid users	Ms A Louw Dr ME Soer	Elandi Pretorius Lindsay Marsay
oVEMP and cVEMP responses in adults with cochlear implants	Dr BM Heinze Prof. B Vinck	Anzil van Jaarsveld Maresa Visser Juzanne Botha
Air caloric: A systematic review and meta-analysis	Dr BM Heinze Prof. B Vinck	Alison Millar Gabriella Seekola
The impact of inverting electrodes on cVEMP recordings	Dr BM Heinze Prof. B Vinck	Hanno Breedts Famke Minnaar Zinette van der Walt
Managing classroom noise using a visual feedback system	Prof. DCD Swanepoel Ms C Louw	Nadia Woite Jessica van Tonder Suzaan Strydom
Effects of sleep deprivation on gap detection thresholds in young adults	Dr ME Soer Dr L Pottas	Petri Nel Lezahn Prinsloo
A Comparison of the gap detection threshold results between 12 and 18 year olds using the Gaps-in Noise test	Dr L Pottas Ms L Biagio	Meghan Freeman Kathryn May
Cochlear implant outcomes and quality of life in adults	Ms T le Roux Dr ME Soer	Katri Mulder Annelie Els
The auditory characteristics of children attending a large facial cleft deformities clinic	Prof. AM Kritzinger Ms A Louw	Madelie Snyman (S*) Shannon Verwey (A*)

S* Speech-Language Pathology student A* Audiology student

Table 6.6: Research reports by final year students in Speech-Language Pathology 2014

Topic	Supervisors	Student Names
The prevalence of communication delays or disorders in infants from birth to one year in an urban under-privileged community in South Africa	Ms J van der Linde Prof. B Vinck	Jeanette Bogatsu A*) Tasneem Taawildar (S*)
A three-point time interval depiction of early communication intervention services at CHRIB 1992-2012	Prof. AM Kritzinger Ms E Strasheim	Samantha Rees Cherise de Beer
Risks for communication delays and disorders in infants in an urban under-privileged community in South Africa	Ms J van der Linde Prof. B Vinck	Dirkje Classen (S) Joanette Pieterse (A)
The effectiveness of the PEDS test in infants from birth to one year in an urban under-privileged community in South Africa	Ms J van der Linde Prof. B Vinck	Tasha Lemmer Linique Hanekom Karla Schoeman
An inventory of sounds affecting the moment of stuttering in English and Afrikaans	Ms UL Zsilavec Ms M le Roux	Taryn Morrish Amy Nesbitt
Language development and mismatch between receptive and expressive abilities in dysfluent children	Ms UL Zsilavec Ms S Geertsema	Bianca Erasmus Bea O'Callaghan
Do PWS reach their full potential regarding appoint ability – discrimination in the workplace	Mrs UL Zsilavec Ms H Mapisa	Ilana Botha Tanya Heyneke
Stuttering as a processing disorder – a case study on dysfluency in sign language	Ms UL Zsilavec Dr L Pottas	Denise Huxham Tanya Robbertse
Feedback during eye contact in children with ASD	Ms S Geertsema Ms E Strasheim	Michelle McDonald Retha Swanepoel Altea van der Merwe
A differential profile of risk factors associated with the different types of dysphagia in a group of infants in a specific NICU	Prof. AM Kritzinger Ms E Strasheim	Caitlin Pike Melissa Pike
The influence of vowel perception and production therapy on the spelling of English L2 learners.	Ms M le Roux Ms S Geertsema	Nicole Stroebel Richenda Wright

Table 6.7: Postgraduate research: MCommunication Pathology dissertations

Student	Title	Supervisors and examiners
1. Degenaar MJ (cum laude)	Infantiele koliek en suig-, sluk- en asemhalingskoördinasie by jong babas	<u>Supervisor:</u> Prof. AM Kritzinger <u>External examiners:</u> Ms AR Lloyd-Jones (Steve Biko Academic hospital) Ms AM Stipinovich (Private practice)
2. Hanekom TH	Comparison of South African Spondaic Wordlist and the CIDW-1 Wordlist for measuring speech recognition threshold	<u>Supervisor:</u> Dr ME Soer <u>Co-supervisor:</u> Dr L Pottas <u>Internal examiner:</u> Prof. DCD Swanepoel <u>External examiner:</u> Dr L Joseph (University of KwaZulu-Natal)
3. Loots S	Support groups for adult cochlear implant users: Needs and perceived outcomes	<u>Supervisor:</u> Ms T le Roux <u>Co-supervisor:</u> Dr L Pottas <u>Internal examiner:</u> Ms N Cass <u>External examiner:</u> Ms JL Perold (Tygerberg hospital)

Table 6.8: Postgraduate research: DPhil Communication Pathology

Candidate	Thesis	Promoters and examiners
Heinze BM	Vestibular functioning and pathology in adults with HIV/AIDS	<u>Promoter:</u> Prof. DCD Swanepoel <u>Co-promoter:</u> Prof. BHME Vinck <u>External examiners:</u> Prof. FW Akin (East Tennessee State University, USA) Prof. RE Gans (University of South Florida, USA) Prof. LKN Maes (University of Ghent, Belgium)

7. COMMUNITY ENGAGEMENT

Table 7.1: Continuous professional development seminars presented by the Department of Speech-Language Pathology and Audiology during 2014

Topic	Date	Presenters	Number of attendees
1. The use of PRAAT as scientific tool in the fields of Speech-Language Pathology and Audiology	27 Feb	Prof. P Corthals	50
2. The role of the speech-language therapist in the Neonatal Intensive Care Unit (NICU) and beyond	30 May	Ms Rina van der Walt	48
3. Cochlear Implants and vestibular testing	28-29 Aug	Dr R Free Prof. E Offeciers Dr L Hofmeyr Dr L Maes Prof. F Wuyts Ms UL Zsilavec Prof. BHME Vinck Dr B Heinze	70
4. Voice Matters: The professional voice user	27 Oct	Prof. K van Lierde	40

Table 7.3: Department of Speech-Language Pathology and Audiology as continuous professional development (CPD) accreditor during 2014

Different service providers	Number of service providers	Number of activities accredited
1. Journal clubs	2	14
2. Individuals who supervised student training	3	3
3. Level 3 activities: Individuals earning continuous educational units (CEU's) for postgraduate studies	2	3
4. Organizations, departments or units presenting workshops and seminars	9	29
5. Individuals presenting training seminars	4	5
6. Individuals earning CEU's as principle presenters of papers/posters at a conference or principle authors of articles in a peer-reviewed journal	1	1
7. CPD articles provided to members of a professional body	3	19
8. Personal CPD activities (conference/seminar/workshop attendance)	1	1
Total	25	75

Table 7.4: Community engagement activities undertaken by staff members 2014

Member/s of staff and presentation	Organisation and location	Date
Ms S Geertsema	- Radio talk on SAfm on autism on Autism Awareness Day	May 2014
Prof. AM Kritzinger	- Popular article in <i>Baba en Kleuter</i> : Beginner Pratertjies - Article in <i>Sensitive Midwifery</i> : Cup feeding in neonates - Talk on autism at private practitioner's group - Presented CPD journal discussion groups at UNICA school	March 2014 July 2014 24 May 23 May 7 Nov
Ms C Louw	- Daspoort Family Health Fun Day: Mandela Day Project- Hearing screening together with students and the multi-disciplinary team at Beertjies pre-school - Daspoort Polyclinic 50 th Celebrations: Community Health Day Project- Hearing screening of people in the community at General Nick Smit School together with students within a multi- disciplinary team approach	24 July 12 Sep
Ms F Mahomed	- Interviewed by ENCA for ETV news bulletin - Interviewed by Features Africa. Link with recorded interview: https://featuresafrica.tv/hearing-app/ - Presented 'hearing loss in school-aged children' at SBA hospital - Co-ordinator of KMP 483- Provision of audiology and speech services to underprivileged children in Mamelodi Bophelong care centre - Co-ordinator of hearing screening practical for ODL 281, awareness and identification of hearing loss in government schools in Tshwane	2014 2014 5 Sep 2014 2014
Ms H Mapisa	- Daspoort Family Health Fun Day: Mandela Day Project. Speech & Language Screening together with students and the multi-disciplinary team at Beertjies pre-school - Daspoort Polyclinic 50 th Celebrations: Community Health Day Project- Speech & Language Screening of people in the community at General Nick Smit School together with students within a multi- disciplinary team approach	24 July 12 Sept
Dr L Pottas	- Radio talk on SAfm on auditory processing disorders	20 May
Mr K Schoeman	- Raising community awareness for persons with Down syndrome: Played the character of Kosie, delivery man for the butcher in the soapie, Sewende Laan on SABC 2	5 June 28 Oct
Dr ME Soer	- Article in <i>Agriland</i> . "Die invloed van geraas op gehoor – voorkom gehoorverlies so" - Fitting of donated hearing aids. 9 children were fitted with 18 hearing aids; 15 adults were fitted with 30 hearing aids	April Jan-August
Ms E Strasheim	- Article in <i>Sensitive Midwifery</i> : Cup feeding in neonates	July
Prof. DCD Swanepoel	- Interviews on audiology and hearing loss with eTV Sunrise Show, Classic FM - Interviews on hearScreen with KykNet Kwela, eNCA News, Cape Talk Radio, RSG - Articles in Pretoria News, Beeld, Mail & Guardian and New Age	2014
Ms UL Zsilavec	- Coordinator of UP Speakeasy Support Group for people who Stutter, Department of Speech-Language Pathology and Audiology - Article in <i>Die Huisgenoot</i>	6 meetings

8. SPECIALIST CLINIC: CLINIC FOR HIGH-RISK BABIES (CHRIB)

Table 8.1: CHRIB student training and client profile in 2014

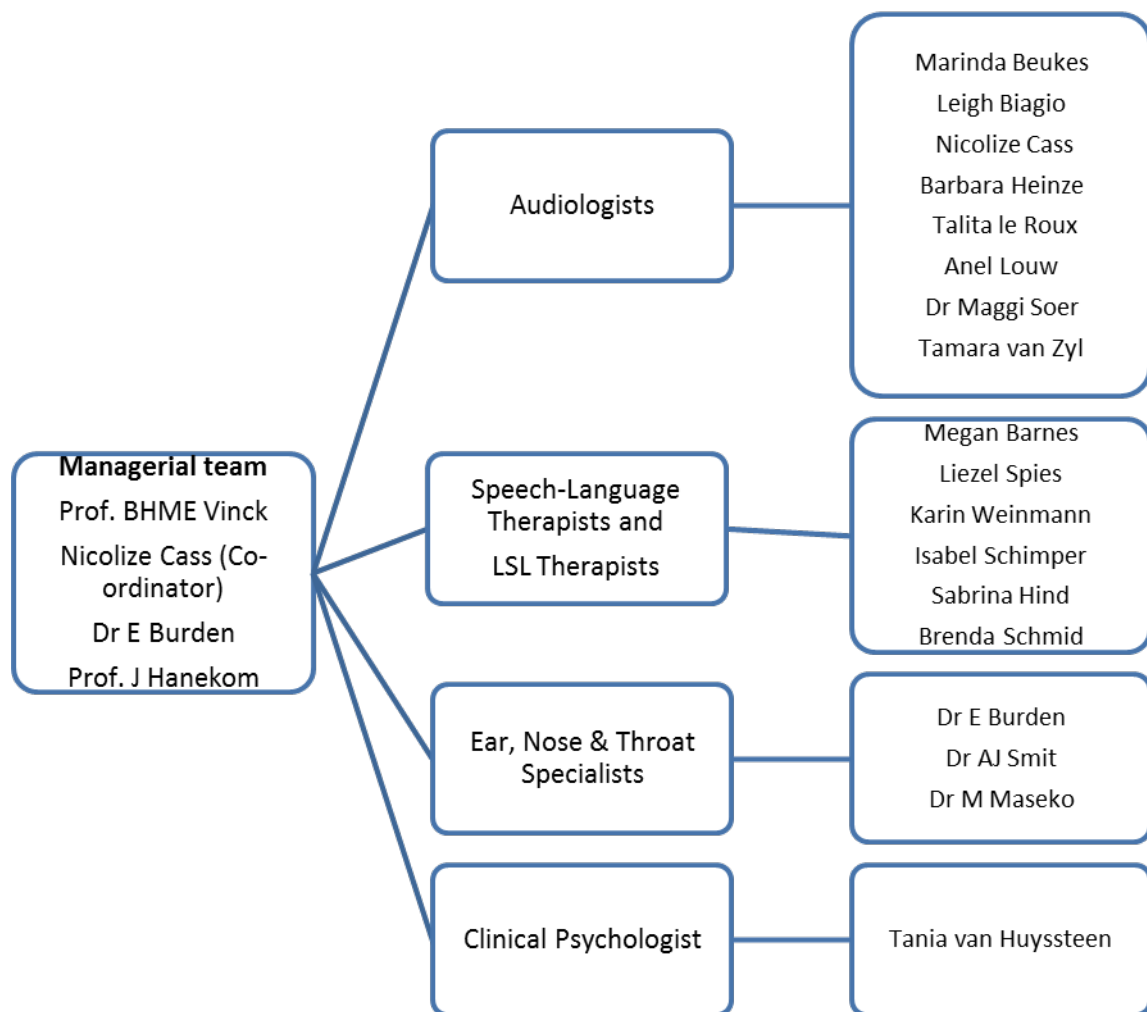
Description of activities and client characteristics		Number
Undergraduate student training	BCommunication Pathology IV (Intensive training)	58
	BCommunication Pathology III	61
	BCommunication Pathology II	72
	BCommunication Pathology I	60
	BOccupational Therapy II	30
Postgraduate student training	MEducational Psychology final year	10
	MECI II (SPP)	5
Assessments (n=72): Parents and young children	Initial assessments	54
	Re-assessments	18
<ul style="list-style-type: none"> - Number of families who received intervention at CHRIB - Average age of child clients - Age range 		40 39.5 months 3-77months
Different developmental conditions in the clients (n=72)	Specific language impairment 12, including low birth weight/preterm birth 7, late talkers 5, pragmatic communication disorder 1	25
	Suspected autism spectrum disorder	12
	Cleft lip and/or palate, including van der Woude syndrome, congenital myopathy and preterm/low birth weight	10
	Global developmental delay, including epilepsy, Sotos syndrome	5
	Down syndrome	4
	Significant hearing loss	2
	Suspected foetal alcohol spectrum disorder	2
	Visual impairment	2
	ADHD	2
	Typical development	2
	Other conditions: Auditory neuropathy spectrum disorder, regulatory disorder, apraxia of speech, developmental phonological disorder, suspected auditory processing disorder	6
Geographical distribution of client families (n=72)	Pretoria and surrounding areas	56
	Mpumalanga	8
	Gauteng	6
	Free State	2
Home language diversity of client families (n=72)	Afrikaans	46
	English	13
	Shona	5
	Setswana	4
	Xhosa	2
	IsiZulu	1
	Sepedi	1

9. UNIVERSITY OF PRETORIA COCHLEAR IMPLANT UNIT (UP-CIU) 2014

The UP-CIU was established in 1991 under the leadership of Prof JG Swart. The Unit is delivering services to persons with moderate-severe to profound hearing loss who is not benefitting from conventional sound amplification as supplied by conventional hearing aids.

The UP-CIU is delivering services as a large cross-disciplinary team in different sites of the Pretoria area. Surgery is performed at two hospitals and mapping at the Department of Speech-Language Pathology and Audiology, as well as one smaller satellite centre at the Eduplex School.

The UP-CIU team is structured as follows:



The UP-CIU has implanted a total of 428 patients since 1991. An additional 117 bilateral implants has been performed. The UP-CIU supplies implant systems from Cochlear™, MedEL and Advanced Bionics. In 2014, a total of 59 new patients were evaluated for possible cochlear implantation. A total number of 30 new implants and 8 bilateral implants were performed during 2014.

Table 9.1: Summary of the total patient distribution of the UP-CIU (end 2014)

	Unilateral implantation			Sequential bilateral implantation			Simultaneous bilateral implantation			Total		
Implant system	C	M	AB	C	M	AB	C	M	AB	C	M	AB
Children (0-3 years)	114	1		20			2			136	1	
Children (4-12 years)	123	1		46						169	1	
Children (13-18 years)	20		2	9						29		2
Adults	162	4	5	41		1				203	4	6
Total number of devices	419	6	7	116		1	2			537	6	8

C= Cochlear™

M= MedEL

AB= Advanced Bionics

Table 9.2: UP-CIU statistics for 2014

	Adults			Children			Total		
Evaluated	34			25			59		
Implanted	Unilateral		Bilateral	Unilateral		Bilateral			
	18		3	12		5	38		
Upgraded	Cochlear	MedEl	AB	Cochlear	MedEl	AB	C	M	AB
	54	1	1	44			98	1	1

10. INTERNATIONAL VISITS, VISITORS AND COLLABORATION

Table 10.1: International visits by members of staff during 2014

Visitor	Institution	Date
Dr BM Heinze	Visit to University of Gent and University Hospital of Antwerpen, Belgium	18 to 24 Oct
Prof. DCD Swanepoel	Visit to Ear Science Institute Australia & The University of Western Australia, Perth	28 April to 9 May

Table 10.2: International visitors received in 2014

Country	Visitors received	Institution/s name/s	Purpose
Australia	Prof. Robert Eikelboom	University of West Australia	Research collaboration, joint writing on several manuscripts, postgraduate student supervision
Belgium	Prof. Kristiane van Lierde	Speech-Language Pathology Department, Gent University	Workshop presentation and research collaboration
Belgium	Prof. Erwin Offeciers	University of Antwerp	Workshop presentation and external examiner for doctoral defence: B Heinze
Belgium	Prof. Floris Wuyts	University of Antwerp	Workshop presentation and research collaboration
Belgium	Prof. Paul Corthals	Audiology Department, Gent University	Workshop presentation
Belgium	Dr Leen Maes	ENT Department, Gent University	Workshop presentation and external examiner for doctoral defence: B Heinze
Sweden	Ms Josefin Lundberg	University of Umea, Sweden	Medical research student conducting collaborative research project data collection
Sweden	Prof. Claude Laurent	University of Umea, Sweden	External examiner for doctoral defence: L Biagio Research supervision of postgraduate students
The Netherlands	Dr Rolien Free	University of Groningen	Workshop presentation
USA	Prof. Diane L Kendall	Associate Professor Speech and Hearing Sciences; Director: Aphasia Lab, University of Washington, Seattle, WA	Postgraduate supervision and research associate of Prof. A van der Merwe
USA	Prof. Jackie Clark	University of Texas at Dallas	Research collaboration