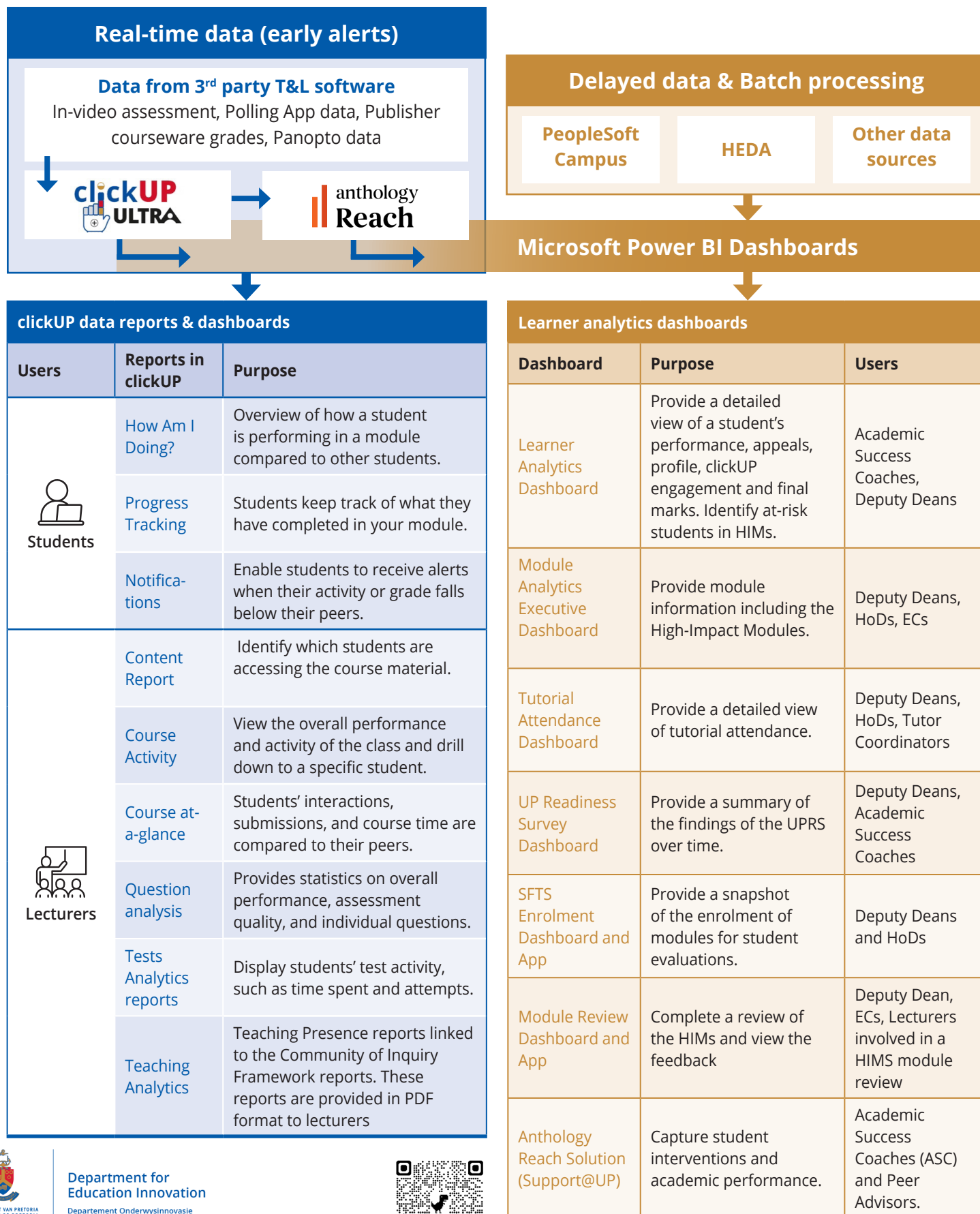


Learning analytics @ UP: Reports, dashboards & alerts

The University of Pretoria enhances student success through a data-driven strategy that identifies at-risk students early. By integrating data from the LMS (Blackboard or clickUP), Peoplesoft, and Anthology Reach into Microsoft Power BI, the university creates user-friendly dashboards for management, lecturers, and students. This enables personalised advising and real-time monitoring of student performance, with effective use of the clickUP [Gradebook](#) and setting up a [current grade](#) being essential.



Department for
Education Innovation

Departement Onderwysinnovasie
Kgoro ya Tšwetsopele ya Thuto

