



UNIVERSITEIT VAN PRETORIA
UNIVERSITY OF PRETORIA
YUNIBESITHI YA PRETORIA

Theology

Undergraduate faculty brochure



2015/16

www.up.ac.za

Message from the Dean

At this juncture, the Faculty of Theology embraces the challenges and, together with the University, has entered into a process to execute the institutional strategic vision and mission for the period 2012 to 2025. The special co-operative spirit among the Faculty's staff and students also renders this challenge exciting.

The Faculty of Theology emphasises excellence, especially with regard to academia and, simultaneously, in the way it lives up to its values.

The Faculty has a particular nature in that it works primarily with partner churches. The Nether Dutch Reformed Church of Africa (NRCA) became the first partner in 1917, and the Dutch Reformed Church (DRC) is the largest partner. The Uniting Presbyterian Church in Southern Africa (UPCSA), as well as the youngest partner, the Uniting Reformed Church in Southern Africa (URCSA), contributes to the unique character of the Faculty. The Faculty believes that each one of the denominational partners adds value to the quality and relevance of its programmes.

The Faculty of Theology is nationally and internationally acknowledged for its high academic standards and scholarly integrity. The branding of the Faculty as one of intellectual excellence can be unpacked in terms of the following three claims:

- We connect worlds.
- We teach life-giving theology.
- Proven excellence is our guarantee.

The Faculty wishes to remain relevant and supply training to the church of the future, not of the past. We wish to support churches in their ministry of today and tomorrow. We therefore address focus areas like urban ministry, African Christianity, public theology, and community development.

The overall research theme of the Faculty is Ecodomy: life in its fullness. Research in the fields of ethics, the



Prof Johan Buitendag
Dean: Faculty of Theology

environment and gender, as well as theological and religious themes with social implications, are of special importance. These include xenophobia, discrimination and violence in communities. Unique themes that are of national relevance, yet are also of international interest, are researched in the Faculty. Much of the research is of an interdisciplinary

nature and includes international participation.

The Faculty of Theology is keen to welcome prospective students who wish to become ministers or other religious workers.

The question to you is: You deserve the best! Why not the University of Pretoria?

Content

Message from the Dean.....	ii
Undergraduate study programmes	1
Faculty highlights	2
Why study at the Faculty of Theology?.....	3
What does the study programme entail?	3
Undergraduate study programmes in Theology	3
Postgraduate study programmes in Theology.....	4
General information	6
- University of Pretoria campuses and contact information.....	6
- Admission requirements.....	6
- Application for admission	6
- Language policy and medium of instruction	7
- Bursaries, awards and loans (financial aid)	7
- Special offer to academic achievers	8
- UP banking details	9
- Accommodation	9
- Security services.....	9
- International students.....	9

Produced by the Client Service Centre in November 2014.
Comments and queries can be directed to csc@up.ac.za or tel: +27 (0)12 420 3111.

Disclaimer: This publication contains information about regulations, policies, tuition fees, curricula and programmes of the University of Pretoria applicable at the time of printing. Amendments to or updating of the information in this publication may be effected from time to time without prior notification. The accuracy, correctness or validity of the information contained in this publication is therefore not guaranteed by the University at any given time and is always subject to verification. The user is kindly requested to verify the correctness of the published information with the University at all times. Failure to do so will not give rise to any claim or action of any nature against the University by any party whatsoever.

Undergraduate study programmes

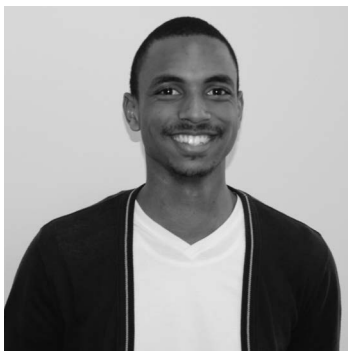
Important information on undergraduate study programmes for 2016

• In order to register for the study programmes, candidates must comply with the minimum NSC/IEB/Cambridge requirements for tertiary studies as well as the minimum requirements of the relevant study programme. • Life Orientation is excluded in the calculation of the APS.

University of Pretoria website www.up.ac.za/theology

National Benchmark Test website www.nbt.ac.za

Study programme Duration Closing dates Careers	Minimum requirements for 2016				
	Achievement level				APS
	Afrikaans or English				
	NSC/ IEB	HIGCSE	AS- Level	A- Level	
BDiv – Bachelor of Divinity (for admission to MDiv studies) [4 years] Closing dates: SA – 30 September Non-SA – 31 August	4	3	D	D	25 (23–24 admission based on the NBT)
Careers: Ministers, pastors, priests, preachers in certain denominations, missionaries and youth counsellors. Other possibilities include ethics consultants to businesses. Theological studies can be enriching for people in various other vocations. If prospective students are interested in ordained ministry, this should also be discussed with their church leadership. This study programme is presented in separate groups in only one language (English or Afrikaans). This is the first step to MDiv studies.					
BTh – Bachelor of Theology [3 years] Closing dates: SA – 30 September Non-SA – 31 August	4	3	D	D	25 (23–24 admission based on the NBT)
Careers: Ministers, pastors, priests, preachers in certain denominations, missionaries and youth counsellors. Other possibilities include ethics consultants to businesses. Theological studies can be enriching for people in various other vocations. If prospective students are interested in ordained ministry, this should also be discussed with their church leadership. This study programme is presented in separate groups in only one language (English or Afrikaans).					
DipTheol – University Diploma in Theology [3 years] Closing dates: SA – 30 September Non-SA – 31 August	3	4	E	E	22 (20–21 admission based on the NBT)
Careers: Ministers, pastors, priests, lay preachers in certain denominations, missionaries and youth counsellors. Candidates should consult their church leadership on which would suit their aims best. The University Diploma in Theology is intended for candidates who have completed Grade 12 (or its equivalent), but without the required university admission. The University Diploma in Theology consists of the same subjects as the two degrees in Theology, and students who excel can possibly continue with postgraduate studies later. This study programme is only presented in English.					



My dream is to be an academic, a theologian of international stature. The Faculty of Theology has contributed substantially to that dream already, in these formative months of my study. I look forward to the forthcoming years that will challenge me intellectually and advance my knowledge.

Siyaphiwa M Maphanga

Faculty highlights

- The Faculty of Theology is the largest of its kind in South Africa and achieves the most degrees, especially PhDs.
- The Faculty has a high number of NRF-rated researchers.
- Two open-access accredited academic journals are linked to the Faculty, namely, HTS Theological Studies/Teologiese Studies and VE (Verbum et Ecclesia). HTS is an Institute for Scientific Information (ISI)-accredited journal and is both the oldest and largest theological journal in South Africa.
- The Faculty has the highest research output among other national faculties of theology.
- The Faculty has established research collaborations with universities in Africa, South Korea, Austria, Europe, UK and USA.
- It is internationally renowned for its programmes in Pastoral Theology, Septuagint Studies, Pentateuch Research and Public Theology.

Contact information

Yolanda Dreyer

Tel +27 (0)12 420 2385

Email yolanda.dreyer@up.ac.za

Rina Roos

Tel +27 (0)12 420 2040

Email rina.roos@up.ac.za

Undergraduate study programmes

Why study at the Faculty of Theology?

The Faculty of Theology is renowned for its commitment to the following:

- *The Bible.* This remains the central point of reference for theology.
- *Spirituality.* Faith formation is of great importance.
- *Academic excellence.* The Faculty's standards of education compare with the best in the world.
- *Lecturers.* Lecturers are noted academics and also respected church leaders.
- *Student life.* Theology students (tokkelokke) participate fully in campus life: tours, Rag, camps, sports, serenades and many more.
- *International contacts.* Students can benefit from the many international contacts of the Faculty.

People study theology for a variety of reasons, and not only to make it their profession. Some find it a fascinating field about which they would like to know more, whereas others search for spiritual enrichment through study or may want to equip themselves to function more effectively in their workplace. The Faculty also offers courses that will benefit students who do not necessarily want to become ministers, but who would like to enrich their lives.

Enriching one's study in another field with insights and applications from theology has many advantages. By including modules from Religion Studies in another field of study, such as computer science, engineering, languages, psychology, social work or teaching, graduates will enter their chosen careers as better equipped, more fully developed people.

What does the study programme entail?

Theology deals with the basic questions of life:

- How do faith and religion influence people's lives?
- How does one approach ethical and moral questions in the workplace?
- How do theological insights promote good human resource practices?
- How does one cultivate ecological sensitivity and awareness?
- The Christian and laws.
- How do religious values contribute to peace and good human relations?
- Can crime be stopped by appealing to people's beliefs and values?
- What is the meaning and purpose of life?
- Where does one find answers to the deepest life questions?

- How does one gain a better understanding of humanity in order to make a difference in the world?

Some students feel called to work in the church as ministers, pastors, priests, lay preachers, missionaries or youth workers. If this is the case, then studying theology is the way to go. Others find their calling in serving the community as social workers, development workers, psychologists, teachers, journalists or writers. Yet others will become engineers, lawyers or entrepreneurs. For all, studying theology will contribute to a greater understanding of humanity and society.

Undergraduate study programmes in Theology

The seven main sections in the study of theology focus on questions about the Bible and life.

- **Old Testament Studies**
The Old Testament is concerned with God's care for creation and for humanity, and God's relationship with Israel. In Old Testament Studies questions on suffering, love, and how to live a life in God's presence are addressed.
- **New Testament Studies**
In the New Testament, the story of Jesus is told and elaborated on from several perspectives. New Testament Studies focuses on the books of the New Testament and the first-century Mediterranean context in which they originated.
- **Church History and Polity**
The history of the Christian church and the lives and theology of great figures in history, such as St Augustine, Thomas Aquinas, John Calvin and Martin Luther, are studied. Church Polity is about the specific ways in which different denominations organise themselves.
- **Science of Religion and Missiology**
Science of Religion focuses on the world religions – Judaism, Islam, Buddhism and Hinduism – and their relationship to Christianity. Missiology investigates the manner in which Christian faith communities participate in God's mission. A holistic approach is followed.
- **Dogmatics and Christian Ethics**
Dogmatics studies faith in God. Who is God? What is faith and how does it contribute to our ability to make sense of the world? Ethics connects what we believe with how we live – always in conversation with others and amid the complexity of our world.
- **Practical Theology**
Practical Theology focuses on what Christians do (faith actions) – how they experience and express their faith. Worship and preaching, the meaning of the symbols and symbolic acts, helping people in a crisis, teaching faith and faith formation, as well as understanding the world in which we live, comprise the concerns of this field.

Contact information

Prof Ernest van Eck
Tel +27 (0)12 420 3804
Email ernest.vaneck@up.ac.za

Postgraduate Study Programmes

Religion Studies

Religion Studies (formerly known as Biblical Studies) is a life-enriching course open to anyone who may be interested in religion. Students from diverse fields, such as engineering, architecture, music, political science, law, fine arts and many more choose to broaden their vision by taking this course. It addresses questions such as the following: Why are people religious? What did ancient people believe? How do we understand and respect our neighbours from other religious denominations?

For more information, contact Dr Jaco Beyers

Tel +27 (0)12 420 2777

Email jaco.beyers@up.ac.za

Postgraduate study programmes in Theology

Bachelor of Theology Honours – BThHons

The purpose of this programme is to provide graduate students with specialised knowledge, skills and competence in a particular field or fields of theology at postgraduate level.

Master of Philosophy in Applied Theology – MPhil (Applied Theology)

Theological studies can be pursued by candidates who already have tertiary qualifications equivalent to any bachelor's degree, but not in theology. Theology is applied to specific ministries, occupations or aspects of community life. An MPhil programme that specialises in the Psalms is also offered.

Master of Divinity – MDiv

The MDiv builds on the BDiv programme or previously the four-year BTh programme. It is a structured master's degree programme based on coursework and focuses on advanced theological knowledge and practical skills that will meet the needs of church ministry. Church-specific training and formation are offered in cooperation with particular church partners.

Master of Theology – MTh

This programme offers the student with a four-year BDiv, a BThHons or equivalent qualification, the opportunity for theological specialisation and research at master's level. There are two possibilities, namely a programme with coursework and a mini-dissertation or a research master's consisting of a dissertation. The coursework modules offer the opportunity to acquire specialist skills in a particular discipline.

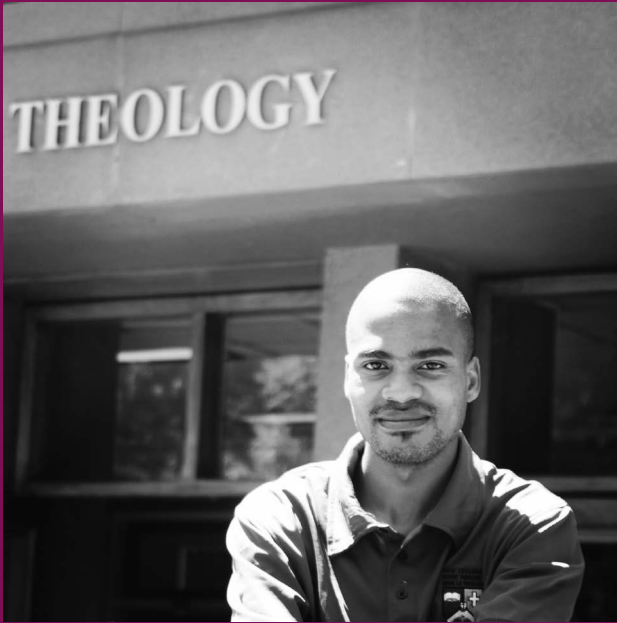
Doctor of Philosophy – PhD

The programme line that starts with the three-year BTh and continues via the BThHons to MTh, or the programme line that starts with the four-year BDiv and continues with the MTh, is concluded with the PhD. The outcome of a PhD is highly specialised knowledge and expertise based on research.



I am currently in my first year of theological studies. So far this year has been a wondrous adventure and never was there a doubt in my mind that choosing theology was the right decision. Not only did the uniquely close-knit community of the Faculty of Theology embrace me from the very beginning, but the studies themselves are interesting and insightful. For me, studying theology is an answer to a calling that has grown within me through the years of growing up in the church – my father is also a minister. During the past six months I have developed as a person and deepened in my faith, therefore I'm looking forward to continuing my journey!

Marina Kok



I am a BTh student in my third year. Growing up I was a very inquisitive child and wanted to know how things came to being, whether it was through inventions, history or the influence of religion in our lives today. I am from Generation Y, I guess that influenced my curiosity about why things happen.

I believe I have been called by God to be a teacher of the Word and my passion is to teach through the media. I love theology because it gives me a new way of thinking and approach to all the questions I have always had. It equips me to be critical, analytical and provides me with the necessary tools to teach the Word of God effectively.

The lecturers are abreast of research and are willing to help students understand difficult theological concepts. Furthermore, they admit when they do not have answers and create an interesting space for interaction.

I am passionate about filmmaking and I have been given an opportunity by the Northern Theological Seminary to produce short documentaries. I dream of using my calling to produce Christian films and documentaries.

Katleho K Mokoena

General information

1. University of Pretoria campuses and contact information

Client Service Centre (CSC)

Tel +27 (0)12 420 3111

Email csc@up.ac.za

Website www.up.ac.za

Location

University of Pretoria, cnr Lynnwood Road and Roper Street, Hatfield, South Africa

Postal address

University of Pretoria, Private bag X20, Hatfield 0028, South Africa

GPS coordinates to campuses

Hatfield	S25° 45' 21" E28° 13' 51"
GIBS	S26° 07' 46.2" E28° 02' 46.788" (56 km from Hatfield Campus)
Groenkloof	S25° 46' 10" E28° 12' 34" (3.5 km from Hatfield Campus)
UP Sports Campus	S25° 45' 10" E28° 14' 46" (1.2 km from Hatfield Campus)
Mamelodi	S25° 43' 22" E28° 23' 56" (12 km from Hatfield Campus)
Onderstepoort	S28° 10' 54" E25° 38' 52" (22 km from Hatfield Campus)
Prinshof	S25° 43' 57" E28° 12' 10" (6 km from Hatfield Campus)

2. Admission requirements

The statutory minimum requirements for degree studies is a National Senior Certificate (NSC), with a minimum achievement level of 4 (50%–59%) in four recognised NSC 20-credit subjects from the designated subject list below:

- Accounting
- Agricultural Science
- Business Studies
- Consumer Studies
- Dramatic Arts
- Economics
- Engineering Graphics and Design
- Geography
- History
- Information Technology
- Languages*
- Life Sciences
- Mathematical Literacy
- Mathematics
- Music
- Physical Science
- Religion Studies
- Visual Arts

*Based on the languages used as medium of instruction at the University of Pretoria, it is advisable that students should have English and/or Afrikaans as a Home Language or as a First Additional Language, together with any other language of choice. Faculties and/or certain study programmes may impose additional requirements.

Prospective students in Grade 12 (final school-year) must use their final Grade 11 year mark (promotion mark) to apply. No Grade 12 marks will be considered for provisional admission. Please note that prospective students who have already left school should use their NSC/IEB* Certificate to apply. Also refer to "Higher Education South Africa" on page 11. Additional selection criteria are applicable in applications for selection programmes.

Provisional admission is granted on the results obtained in the final Grade 11 examination (promotion mark). Please note that the final Grade 12 results remain the determining factor with regard to admission. Also note that compliance with the minimum requirements does not necessarily guarantee admission to any study programme.

The calculation of an Admission Point Score (APS) is based on a candidate's achievement in any SIX recognised NSC 20-credit subjects (including subjects from the non-designated subject list, eg CAT, Tourism, Hospitality Studies and Civil, Electrical & Mechanical Technology, etc), by using the NSC seven-point rating scale. Life Orientation is a 10-credit subject and may not be used for calculating the APS. Life Orientation is also not a faculty-specific subject requirement.

*Independent Examination Board (IEB)

National Senior Certificate (NSC) seven-point rating scale

Achievement level	Description	Percentage
7	Outstanding achievement	80–100%
6	Meritorious achievement	70–79%
5	Substantial achievement	60–69%
4	Adequate achievement	50–59%
3	Moderate achievement	40–49%
2	Elementary achievement	30–39%
1	Not achieved	0–29%

National Benchmark Test (NBT)

The NBT is not compulsory for all study programmes. Please refer to the relevant study programmes in this brochure. Please note that the Academic Literacy Test does not replace the NBT.

Contact information

Tel +27 (0)21 650 3523

Website www.nbt.ac.za

3. Application for admission

- Applications open on 1 March of the year preceding the year of study. Completed application forms must reach the CSC before the closing date.
- We recommend that you apply online at www.up.ac.za/ apply. Once your application form has been processed, you will receive an eight-digit UP student number. You are also welcome to download an application form from the website.
- It is strongly recommended that you also indicate a second choice study programme on your application form. Refer to www.up.ac.za/admissioninfo. It is not advisable to apply for two selection programmes as your first and second choice. Selection programmes are study

General information

programmes with early closing dates and limited space and must preferably be indicated as first choice on your application form.

- A non-refundable application levy of R300 must accompany every application.
- The following documents must accompany your application:
 - A copy of your final Grade 11 examination report indicating your promotion mark
 - A copy of your ID or your birth certificate
- Faxed, scanned, or emailed application forms will not be accepted. Each student must complete only one application form.
- You may follow the progress of your application online via the UP Portal (Student Centre). Visit www.up.ac.za/portal.

4. Language policy and medium of instruction

In conducting its business, the University uses two official languages, namely English and Afrikaans. In formal education the medium of instruction is either English or Afrikaans, or both of these languages; provided that there is a demand and that it is academically and economically justifiable. However, it remains the student's responsibility to ascertain on an annual basis in which language a module and any further level of that module is presented. In respect of administrative and other services, a student has the right to choose whether the

University should communicate with him or her in English or Afrikaans. Where the University has the capacity, Sepedi is used as an additional language of communication.

5. Bursaries, awards and loans (financial aid)

University-managed bursaries and loans

Apply between 1 August and 30 September of the year preceding studies at www.up.ac.za/feesfunding. Please note that applicants for sports bursaries, should also complete an application form, which can be obtained from the Sports Centre, sportsinfo@up.ac.za, +27 (0)12 420 6060 or www.up.ac.za/sport.

University-managed awards

Learners do not apply for these awards. They are awarded automatically after registration. For the specific criteria, please refer to www.up.ac.za/feesfunding.

Other financial aid options

- Edu-loan: www.eduloan.co.za
- The Bursary Register:
 - Tel +27 (0)11 672 6559
 - Email slevin@mnet.co.za
 - www.gostudy.mobi
- www.bursary.hcifoundation.co.za

Achievement awards – new first-year students: 2015*

Guaranteed undergraduate achievement awards

Learners do not apply for the achievement awards below. These awards are awarded based on academic achievement.

Qualifying average percentage	Faculty of Natural and Agricultural Sciences Faculty of Engineering, Built Environment and Information Technology	Faculty of Health Sciences Faculty of Veterinary Science	Other faculties
75%–79.99%	R6 000	–	–
80%–89.99%	R15 000	R6 000	R15 000
90%–100%	R40 000	R20 000	R40 000

*Amounts will be adjusted for 2016.

Please note: The University of Pretoria reserves the right to amend award values without prior notice. Please refer to www.up.ac.za/feesfunding for the criteria applicable to the above achievement awards.

General information

6. Special offer to academic achievers

The special offer to academic achievers is based on average percentages obtained in the end examination of the final school year. This special offer may include guaranteed awards, placement in study programmes and/or residence placement. For more information on the University's special offer to new first-year students, visit www.up.ac.za/admissioninfo.

Guaranteed admission to a non-selection study programme of a student's first or second choice

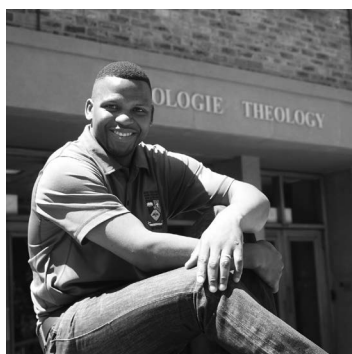
Conditions

- Applications must be received on or before 1 May of the year preceding commencement of studies.
- The minimum requirements for admission to the chosen study programme must be met with the results achieved in the end examination of the final school-year.
- The minimum National Benchmark Test (NBT) requirements for the specific study programme must be met.

Please note that admission to selection study programmes cannot be guaranteed.

Placement in a residence of the University of Pretoria

75%–89.99%	90%–100%
<p>Consideration for placement in a residence of the University of Pretoria rests upon the following:</p> <p>The prospective student must:</p> <ul style="list-style-type: none"> ▪ apply before 1 May in the year preceding studies; ▪ have obtained an average of between 75% and 89.99% in the examination with which the student apply for admission to study at UP; and ▪ be provisionally admitted to a study programme. <p>Please take note that the academic average percentage is based on a calculation formula of the University of Pretoria.</p>	<p>Guaranteed placement in a residence of the University of Pretoria rests upon the following:</p> <p>The prospective student must:</p> <ul style="list-style-type: none"> ▪ apply before 1 May in the year preceding studies; ▪ have obtained a minimum average of 90% in the examination with which the student apply for admission to study at UP; and ▪ be provisionally admitted to a study programme. <p>Please take note that the academic average percentage is based on a calculation formula of the University of Pretoria.</p>



What I love about the Faculty of Theology is that our lecturers are enthusiastic about their work and have time for their students, thus enabling us to always to do our best and become the best we can be. My dream job is to be a preacher of the Gospel of Jesus Christ in the Evangelical Presbyterian Church.

Bongakonke M Madela

General information

7. UP banking details

ABSA	Standard Bank
Branch: Hatfield	Branch: Hatfield
Branch code: 632005	Branch code: 011545
Account number: 214 000 0054	Account number: 012 602 604
Deposit Reference: Eight-digit student number	Deposit Reference: Eight-digit student number
For international transactions: SWIFT CODE: ABSAZAJCPT	

Please note:

- Always quote your eight-digit UP student number when making payments.
- Allow at least five working days for processing by your bank and retain the proof of payment (deposit slip).
- Do not fax your deposit slip to UP, unless specifically requested to do so. Faxing the deposit slip to UP will NOT reduce processing time at the University and will NOT allow same day services, especially during registration.
- For the Absa online banking page, see www.up.ac.za for help on setting up first time online banking. Search with "UNI" as beneficiary and choose the "students" option. This will reflect UP's bank account number 214 000 0054 when making a payment and will allow you to use your student number as reference.

8. Accommodation

Only a limited number of places are available in the University's residences. Placement in residences is based on academic achievement (APS) in Grade 11 and the date of your application. Consequently, you are strongly advised to apply for placement in a residence in March of the year preceding your studies. Please note that the demand for residence accommodation exceeds the availability and admission to a study programme can thus not guarantee placement in a residence. Guaranteed placement in a residence only applies to students who meet the minimum requirements of the UP special offer to academic achievers.

Application for placement in a residence is made on the application form for a study programme. Placement in a residence then takes place AFTER a prospective student has been provisionally admitted to a study programme. A prescribed reservation fee for residence place, is payable once you have been notified in writing that you have been placed in a residence. Please visit www.up.ac.za/admissioninfo or www.up.ac.za/accommodation.

Private accommodation

The University can unfortunately not provide accommodation to all applicants as the demand exceeds the available places. For more information please refer to www.up.ac.za/accommodation.

9. Security services

The Department of Security Services creates and maintains a 24-hour safe environment, provides access control on all campuses as well as 24 hour surveillance by the UP Operational Management Centre.

Contact information

24 hour UP Operational Manager

+27 (0)83 654 0476

24 hour UP Operational Management Centre

+27 (0)12 420 2310/2760

24 hour crisis line

+27 (0)80 000 6428 (toll-free)

10. International students

All non-South African citizens must report to the International Students Division in the Client Service Centre on the Hatfield Campus prior to registration. Non-South African citizens will have to submit proof of legal status in South Africa, as well as proof of adequate medical aid cover at the International Students Division in the Client Service Centre before they will be able to register.

Contact information

Tel +27 (0)12 420 3111

Email csc@up.ac.za

Website www.up.ac.za/ISD

Location Client Service Centre
Hatfield Campus

Supporting documents

All non-South African citizens will have to show their original documents and submit two photocopies of each of the documents listed below:

- The International Students Information form, completed and signed
- A valid passport or an ID (in the case of students with permanent residence in South Africa)
- A valid study permit endorsed for studies at the University of Pretoria or one of the following:
 - A study visa
 - An asylum-seekers transit visa
 - Refugee – Section 24 permit
 - A diplomatic visa
- Proof of medical aid cover (medical aid cover must be paid a year in advance, from January to December)

The above-mentioned documents must be submitted to an international consultant and the information must be captured before you can register.

Medical aid cover for study permit-holders

Non-South African citizens who are holders of study permits, or who wish to apply for a study permit must, in terms of South Africa's Immigration Act, have sufficient medical aid

General information

cover for the duration of their stay in South Africa. Non-South African citizens intending to study at the University of Pretoria can join one of the following medical aid schemes:

Momentum Health (Ingwe option)

Membership fees are payable in advance annually.

Tel +27 (0)12 671 8749 (Centurion office) or
+27 (0)86 010 2493

Email studenthealth@momentum.co.za

Website www.ingwehealth.co.za

BestMed Medical Scheme (Blueprint student option)

Membership fees are payable in advance annually.

Tel +27 (0)12 339 9800 or
+27 (0)86 000 2378 or
+27 (0)86 000 BEST

Fax +27 (0)12 323 4106 or
+27 (0)12 339 9900

Email lineyl@curemed.co.za

Higher Education South Africa (HESA)

A full or foreign conditional exemption certificate is a prerequisite and applicable to non-South African citizens and to students who do not have a South African National Senior Certificate (NSC) qualification or Independent Examination Board (IEB) qualification and who want to enrol for undergraduate studies at the University of Pretoria. This certificate can only be obtained from HESA.

Contact information

Tel +27 (0)12 481 2821

Fax +27 (0)12 481 2843/50

Email info@hesa.org.za

Website www.hesa.org.za

Location Unisa Sunnyside Campus
Building 3 Level 1
Cnr Rissik and Steve Biko Street
Sunnyside
Pretoria



I am currently studying towards a BTh degree with Psychology as my elective subject. I was on the verge of applying for a BA (General) degree when I woke up one day with the conviction that I should study theology. I believe that it is my calling to help people in every way possible. Combining these two study fields will enable me to understand people on a psychological as well as a spiritual level. I can honestly say that I am where I need to be. I really enjoy the course and I am more passionate about God than I have ever been, my studies truly make me feel happy and fulfilled.

Shanté le Roux

General information

Admission Point Score (APS) conversion

The following tables can be used to convert your marks/symbols into an Admission Point Score (APS) when applying for studies at the University of Pretoria (UP).

Admission Point Score (APS) Conversion Table

APS (requirement level for subjects as well as overall APS)	NSC/IEB	SC HG M-score	SC SG M-score	HIGCSE NSSC HL	AS-Level	IB SL	IGCSE/ GCSE/ NSSC OL/ O-Level	IGCSE/ GCSE/ NSSC OL/ O-Level
							Grade 11*	Grade 12**
7	7 (80–100%)	A		1	A	7	A	
6	6 (70–79%)	B	A	2	B	6	B	
5	5 (60–69%)	C	B	3	C	5	C	A
4	4 (50–59%)	D	C	3	D	4	C	B
3	3 (40–49%)	E	D	4	E	3	D	C
2	2 (30–39%)	F	E			2	E	D/E
1	1 (0–29%)	G	F			1	F	F/G

* APS conversion for Grade 11 equivalent qualifications only and for conditional admission and selection purposes

** APS conversion for Grade 12 equivalent qualifications – not for final admission and must be taken together with Advanced Subsidiary Level and Advanced Level for exemption purposes

Admission Point Score (APS) Conversion Table only for Cambridge Advanced Level and IB Higher Level

APS		A-Level	IB HL
Required level for subjects	Required level for overall APS		
7	10	A	7
6	8	B	6
5	7	C	5
4	6	D	4
3	5	E	
2	4		
1	3		

NSC	National Senior Certificate (completed Grade 12 in and after 2008)
IEB	Independent Examination Board
SC HG	Senior Certificate Higher Grade (completed Grade 12 before 2008)
SC SG	Senior Certificate Standard Grade (completed Grade 12 before 2008)
HIGCSE	Higher International General Certificate of Secondary Education
A-Level	Advanced Level
AS-Level	Advanced Subsidiary Level
IB	International Baccalaureate Schools (Higher Levels and Standard Levels)
IGCSE	International General Certificate of Secondary Education
GCSE	General Certificate of Secondary Education
NSSC	Namibia Senior Secondary Certificate
O-Level	Ordinary Level