



Department of Residence Affairs and Accommodation

Guest Accommodation Brochure



UNIVERSITEIT VAN PRETORIA
UNIVERSITY OF PRETORIA
YUNIBESITHI YA PRETORIA

Make today matter

About University of Pretoria

Welcome

The University of Pretoria (UP) is pleased to welcome you to its hometown, Pretoria, the Jacaranda City. We believe that your participation in academic activities at UP will prove to be a significant contribution to the realisation of our vision. In an attempt to make your stay in Pretoria a memorable one, the Department of Residence Affairs and Accommodation (TuksRes) brings you this Guest Accommodation Brochure.

About the University

UP was established in 1908 and currently has more than 60 000 students. It has become one of the leading higher education institutions in Africa and the world.

Vision

The vision of UP is to be a leading research-intensive university in Africa, recognised internationally for its quality, relevance and impact, developing people, creating knowledge and making a difference locally and globally.

Mission

In pursuing recognition and excellence in its core functions of research, teaching and learning, as well as integrating engagement with society and communities into these, UP will use quality, relevance, diversity and sustainability as its navigational markers.

TuksRes: Legaegae – Real home

TuksRes is committed to providing its guests not only with a bed, but also with a chance to engage with a culturally diverse guest community. Its guest accommodation facilities support a culture of learning by providing comfortable accommodation.

A wide range of short-term self-catering accommodation is available for VIP guests, postdoctoral fellows, visiting academics, exchange students and elective students of the University. The accommodation is situated within walking distance of the University's campuses.

The Guest Accommodation Brochure provides an outline of the types of guest accommodation available, as well as the services and amenities offered at each facility. A limited number of places are available. It is therefore essential to reserve accommodation well in advance of your trip.



Reservations

Email: tuksres.guest@up.ac.za
Tel: +27 (0)12 420 5385/6395



UP CAMPUSES



UP's academic activities take place across six campuses: Hatfield, Hillcrest, Groenkloof, Prinshof, Onderstepoort and Mamelodi. Guest accommodation is available at all the campuses, with the exception of Mamelodi Campus.

Hatfield

The suburb of Hatfield is known as the student hub of Pretoria. The reason for this is that UP's Hatfield Campus houses the majority of academic activities. The area is home to restaurants, shopping centres, medical centres, embassies, the University's sports fields and gym facilities, as well as an active nightlife. Hatfield is also close to some of the gems of the Jacaranda City, including the Union Buildings, Freedom Park, the Voortrekker Monument, the Pretoria Art Museum and Loftus Versveld stadium.

Groenkloof

UP's Groenkloof Campus is located in the tranquil Groenkloof area, and is famous for its close proximity to the Groenkloof Nature Reserve. This 600 hectare piece of land was the first game sanctuary in Africa. Visitors can participate in bicycle, hiking and 4x4 routes, as well as self-driven game drives. Groenkloof Campus is close to Brooklyn Mall, as well as a range of shopping centres, private hospitals and independent schools.

Onderstepoort

In Pretoria, the word "Onderstepoort" is synonymous with veterinary science. The Onderstepoort Campus hosts the University's Faculty of Veterinary Science, which is the only one of its kind in South Africa.



Guests typically travel to OR Tambo International Airport, which is located some 55 km (40 minutes' drive) from Hatfield Campus. Guests are required to make their own shuttle arrangements to the Guest Accommodation Office at 1134 South Street for the collection of keys. Guest staying at Hippokrates and Onderstepoort Campus can travel there directly for on-site collection of keys.



A complimentary bus service is available for transportation between UP's campuses.

Hatfield is also home to the Hatfield Gautrain station and the A Re Yeng stop at Loftus Versveld. Please visit the respective websites of these services for schedules and bookings.

Uber services are typically available from your accommodation, but these services are not readily accessible from public train stations.



UP's campuses offer Wi-Fi to visitors in most open and indoor student communal areas. These areas are indicated by signs. Please refer to <http://www.up.ac.za/up-wireless-network>.



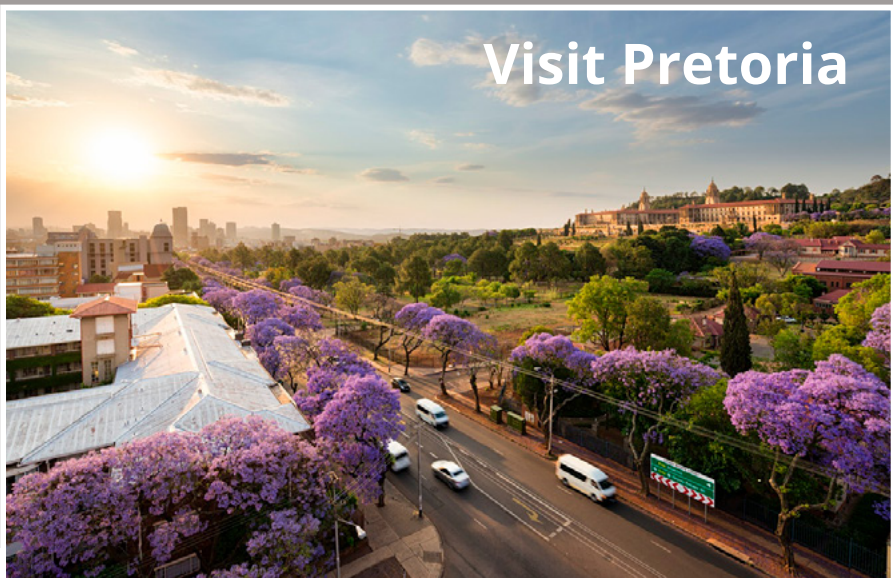
Holiday accommodation for groups



With 10 000 student accommodation spaces, the University of Pretoria is proud to be known as the largest residential university in South Africa.

Do you need group accommodation during the holiday period?

TuksRes offers its residence facilities for groups of 50 or more people during the July recess period. The accommodation is suitable for a range of activities, including conferences, as well as academic and sports groups. The proximity of the residences to exciting activities and attractions in Pretoria make them ideal for visitors from across the country and the world.



Visit Pretoria

Holiday accommodation

Amenities

- Standard rooms with single beds
- Bedding is provided
- Shared communal bathrooms

Catering

- Meals can be provided (email: food@up.ac.za)
- No self-catering options available

Services

- Parking may be arranged
- Residence Wi-Fi available
- Cleaning service available for communal areas
- 24-hour security guard



Find your
home away
from home



Cum Laude 3

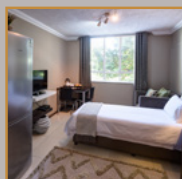


1155 South Street, Hatfield

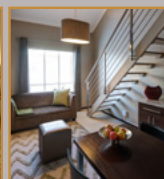
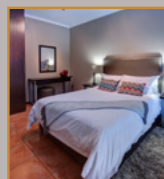
28°23'82"(E), -25°75'36"(S)

- Cum Laude 3 is an accommodation complex situated in the heart of Hatfield, in close proximity to Hatfield Campus (700 m from the Lunnon Road entrance) and the sports ground with gym facilities (1 km from the South Street entrance).
- It has modern and spacious bachelor units (one person), loft units (maximum two people sharing), one-bedroom units (maximum two people sharing) and three-bedroom units (maximum four people sharing with a shared kitchen, living area and bathroom).
- The shopping centres are conveniently located within walking distance of Cum Laude 3.
- There are a number of up-market restaurants in the area
- Cum Laude 3 is close to the Hillcrest public swimming pool.
- The Hatfield Gautrain station is just a stone's throw away.
- Cum Laude 3 is surrounded by many world-renowned attractions, including the Union Buildings, Freedom Park, the Voortrekker Monument, embassies, the Pretoria Art Museum and Loftus Versveld stadium.

Bachelor unit:
Single bed



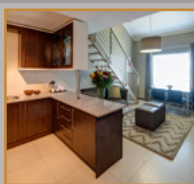
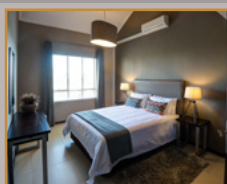
Loft unit:
Double bed



One-bedroom unit: Double bed



Three-bedroom unit: 2 x single beds; 1 x double bed



Amenities

- Furnished
- Self-catering
- Kitchen fully equipped with the necessary appliances (including fridge) and kitchenware
- En-suite bathroom (shower)
- Lounge available in loft units, one-bedroom units and three-bedroom units
- LED TV and DStv (selected channels)

Services

- Complimentary undercover parking
- 24-hour security guard on site
- Ethernet connection
- On-site laundry facility
- Housekeeping service (linen provided)
- Disability units available upon request



Reservations

Email: tuksres.guest@up.ac.za

Tel: +27 (0)12 420 5385/6395



Postdoc Houses



1146 South Street, Hatfield

28°23'74"(E), -25°75'32"(S)



525 and 533 Grosvenor Street, Hatfield

28°23'75"(E), -25°75'27"(S) 28°23'75"(E), -25°75'29"(S)



1135, 1139 and 1141 Prospect Street, Hatfield

28°23'71"(E), -25°75'21"(S) 28°23'71"(E), -25°75'23"(S)



1294 Boundary Lane, Hatfield

28°24'45"(E), -25°75'38"(S)



Reservations

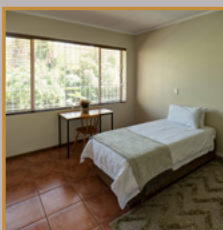
Email: tuksres.guest@up.ac.za

Tel: +27 (0)12 420 5385/6395

The postdoc houses are specifically designed to promote a sense of academic community. Here, guests share communal spaces such as the kitchen, living area and bathroom, while still enjoying the solitude of a private bedroom.

- Six postdoc houses are situated across central Hatfield, all within walking distance of UP's Hatfield Campus and the sports grounds with gym facilities.
- The houses in South, Grosvenor and Prospect streets are some 700 m from Hatfield Campus (Lunnon Road entrance), while the Boundary Lane house is 1.2 km from Hatfield Campus and includes a private swimming pool.
- A range of shopping centres are conveniently located within walking distance of the houses.
- Guests can enjoy the many great restaurants in the area.
- Guests can also visit the Hillcrest public swimming pool.
- The Hatfield Gautrain station is just a stone's throw away.
- The houses are surrounded by many world-renowned attractions, including the Pretoria National Botanical Garden, the Union Buildings, Freedom Park, the Voortrekker Monument, embassies, the Pretoria Art Museum and Loftus Versveld stadium.

Commune houses



Amenities

- Furnished
- Shared communal spaces such as the kitchen, living area and bathroom
- Single rooms
- Self-catering
- Kitchen equipped with the necessary appliances (including fridge) and kitchenware

Services

- Residential parking available
- Ethernet connection
- On-site laundry facility
- Partial housekeeping service

Exchange/ Elective Houses

📍 1220 South Street, Hatfield
28°24'09"(E), -25°75'30"(S)

📍 545 Glynn Street in Hatfield
28°24'21"(E), -25°74'60"(S)

The exchange/elective houses provide the perfect space to kindle a culture of learning. Here, guests share communal spaces such as the kitchen, living area and bathroom, while still enjoying the solitude of a private bedroom.

- Guest are accommodated in two exchange/elective houses.
- The houses are situated within walking distance of UP's Hatfield Campus in Lunnon Road (800 m) and the sports grounds in South Street (600 m).
- Many shopping centres are conveniently located within walking distance of the houses.
- Guests can enjoy the high-end restaurants in the area.
- Guests can visit the Hillcrest public swimming pool.
- The Hatfield Gautrain station is just around the corner.



Reservations

Email: tuksres.guest@up.ac.za
Tel: +27 (0)12 420 5385/6395

Commune houses



Amenities

- Furnished
- Shared communal spaces such as the kitchen, living area and bathroom
- Single rooms and double rooms available
- Self-catering
- Kitchen equipped with the necessary appliances (including fridge) and kitchenware

Services

- Residential parking available
- Ethernet connection
- On-site laundry facility
- Partial housekeeping service

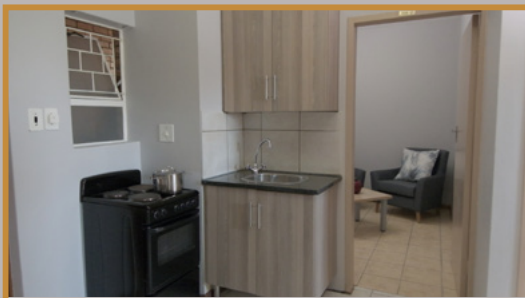
Fairview Village



243 Lunnon Road, Hillcrest

28°24'39"(E), -25°75'83"(S)

- Fairview Village is situated in Hillcrest, a short drive from central Hatfield, and walking distance (800 m) from UP's Hatfield Campus in Lunnon Road and from the sports grounds in South Street.
- Fairview apartments comprise three- to four-bedroom shared units. Twenty of these units are owned by the University for the exclusive use of guests.
- Hillcrest is a tranquil area just beyond the vibrant atmosphere of Hatfield.
- The shopping centres are conveniently located within walking distance of the apartments.
- There are also a number of up-market restaurants in the area.
- Fairview Village is close to the Hillcrest public swimming pool.
- The Hatfield Gautrain station is just a short drive away.



Amenities

- Furnished
- Shared communal spaces such as the kitchen and bathroom
- Single rooms (single beds)
- Self-catering
- Kitchen equipped with the necessary appliances (including fridge) and kitchenware

Services

- Residential parking available
- Laundry facility
- Partial housekeeping service
- Guests to provide their own internet connection



Reservations

Email: tuksres.guest@up.ac.za

Tel: +27 (0)12 420 5385/6395



Groenkloof Campus Guest Accommodation



Corner George Storrar and Leyds
Street (Groenkloof Campus)
28°20'90"(E), -25°76'95"(S)

- Groenkloof Campus guest accommodation is located on UP's Groenkloof Campus, which houses the Faculty of Education. The Campus is situated in the tranquil Groenkloof area.
- All activities of the Faculty of Education take place on Groenkloof Campus, which ensures a simple and pleasant commute for guests. The Campus also has its own sports fields with gym facilities and a swimming pool.
- UP's Hatfield Campus can be accessed through its complimentary bus service during the academic period.
- Groenkloof Campus is ideally located in an area close to corporate companies, high-end restaurants, malls, shopping centres, independent schools and private hospitals.
- Groenkloof is famous for the Groenkloof Nature Reserve, which boasts bicycle, hiking and 4x4 routes, as well as the opportunity to go on a self-driven game drive.



Reservations

Email: tuksres.guest@up.ac.za
Tel: +27 (0)12 420 6395

Amenities

- Furnished
- Open-plan family living area and dining room
- Bathrooms with showers and baths
- Self-catering
- Kitchen fully equipped with the necessary appliances (including fridge) and kitchenware
- Study
- LED TV and DStv (selected channels)
- Sports fields

Services

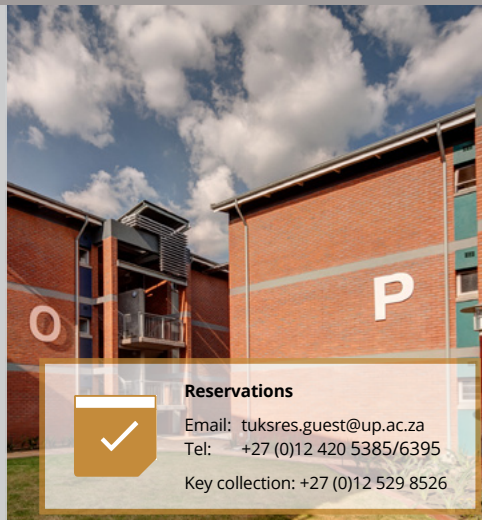
- Parking available on Campus (open and garages)
- Ethernet connection and Campus Wi-Fi
- Laundry facility
- Partial housekeeping service (linen provided)

Onderstepoort Campus Guest Accommodation



M35
(Onderstepoort/Soutpan)
(Onderstepoort Campus)
28°18'25"(E), -25°65'12"(S)

- In Pretoria, the word "Onderstepoort" is synonymous with veterinary science. Guest accommodation is located on this very unique campus, which hosts the Faculty of Veterinary Science – the only one of its kind in South Africa. All activities of the Faculty take place on Onderstepoort Campus, which ensures a simple and pleasant commute for guests.
- The Campus is also home to the Onderstepoort Veterinary Academic Hospital, as well as the animals studied by the Faculty. It is always alive with activity and the sounds of our four-legged friends.
- The closest shopping centre is Wonderboom Junction.
- One of the fascinating attraction in the area is the Wonderboom Airport, where many interesting small and medium planes are housed.
- This accommodation offers lovely spacious rooms in the heart of all the academic activities on the Campus. It also has an on-site swimming pool and gym facilities.



Reservations



Email: tuksres.guest@up.ac.za
Tel: +27 (0)12 420 5385/6395
Key collection: +27 (0)12 529 8526



Bachelor flat

Amenities

- Furnished
- Queen-size bed
- En-suite bathroom (shower)
- Self-catering
- Kitchen equipped with the necessary appliances (including fridge, stove and microwave), as well as kitchenware
- LED TV and DSTv (selected channels)

Services

- Open parking
- 24-hour security guard
- Ethernet connection
- Self-service laundry facility
- Partial housekeeping service (linen provided)
- Check-in and key collection at Onderstepoort Guest Office

Commune flat (Type A)

Amenities

- Furnished
- Shared communal space (kitchen)
- Single bed
- En-suite bathroom (shower)
- Self-catering
- Kitchen equipped with the necessary appliances (including fridge, stove and microwave), as well as kitchenware

Services

- Open parking
- 24-hour security guard
- Ethernet connection
- Self-service laundry facility
- Partial housekeeping service
- Check-in and key collection at Onderstepoort Guest Office

Commune flat (Type B)

Amenities

- Furnished
- Shared communal spaces (kitchen and bathroom)
- Single bed
- Self-catering
- Kitchen equipped with the necessary appliances (including fridge, stove and microwave), as well as kitchenware

Services

- Open parking
- 24-hour security guard
- Ethernet connection
- Self-service laundry facility
- Partial housekeeping service
- Check-in and key collection at Onderstepoort Guest Office

FIRST THINGS FIRST

Guest Accommodation Office

Address: 1134 South Street, Hatfield
Hours: 08:00–16:30 (Monday to Friday)
Contact number: +27 (0)12 420 6395

Visit the Guest Accommodation Office for your proof of accommodation. You will need this to buy a cell phone or open a bank account.



Cellular

Four major South African cellular service providers each have a store in Hatfield Plaza, which is located near the Guest Accommodation Office.

Cell C Hatfield Plaza

Hours: 08:30–17:00 (Monday to Friday)
09:00–17:00 (Saturday)
10:00–16:00 (Sunday)

MTN Hatfield Plaza

Hours: 09:00–17:30 (Monday to Friday)
09:00–15:00 (Saturday)
10:00–15:00 (Sunday)

Telkom Direct Hatfield Plaza

Hours: 09:00–17:00 (Monday to Friday)
09:00–13:00 (Saturday)

Vodacom Hatfield Plaza

Hours: 09:00–17:30 (Monday to Friday)
09:00–15:00 (Saturday)
09:00–13:00 (Sunday)



Shopping centres

The areas surrounding the University's campus have a range of exciting shopping centres where you will find restaurants, shops and entertainment.

Hatfield Plaza

Cnr Burnett and Grosvenor streets, Hatfield
Website: <http://www.hatfieldplaza.com/>
(Hatfield accommodation)

Hillcrest Boulevard

361 Lynnwood Road, Hatfield
Website: <http://www.hillcrestboulevard.co.za/>
(Hatfield and Groenkloof accommodation)

Menlyn Park Shopping Centre

Cnr Atterbury Road and Lois Avenue, Menlyn
Website: <http://www.menlynpark.co.za/>

Menlyn Maine

Cnr January Masilela Road and Aramist Avenue, Menlyn
Website: <http://www.menlynmaine.co.za/>

Brooklyn Mall

Cnr Fehrnsen and Veale streets, Brooklyn
Website: <http://www.brooklynmall.co.za/>
(Hatfield and Groenkloof accommodation)

Jacaranda Shopping Centre

Cnr Nico Smith and Frates roads, Rietfontein
Website: <http://www.jakarandacentre.co.za/>
(Prinshof accommodation)

Wonderboom Junction

Cnr Lavender and Lavender East roads, Wonderboom
Website: <http://www.wonderboomjunction.co.za/>
(Onderstepoort accommodation)

North Park Shopping Centre

Cnr Rachel de Beer Street and Emily Hobhouse Avenue, Pretoria North
(Onderstepoort accommodation)

Kolonnade Shopping Centre

Cnr Sefako Makgatho Drive and Enkelodoorn Avenue, Montana Park
Website: <https://www.kolonnadecentre.co.za/>



Hospitals

Public hospital: Steve Biko Academic Hospital
Cnr Voortrekker Road and Malan Street, Prinshof
Phone: +27 (0)12 354 1000

Private hospitals:

Life Groenkloof (Little Company of Mary)

50 George Storrar Drive, Groenkloof Pretoria
Phone: +27 (0)12 424 3600

Zuid Afrikaans Hospital

255 Bourke Street, Muckleneuk Pretoria
Phone: +27 (0)12 343 0300

Eugene Marais Hospital

696 Fifth Avenue, Les Marais Pretoria
Phone: +27 (0)12 334 2777



Attractions

Loftus Versfeld Stadium
416 Kirkness Street, Arcadia

Voortrekker Monument
Eufees Road, Groenkloof

Groenkloof Nature Reserve
335/M7 Eufees Road, Groenkloof

Union Buildings
Government Avenue, Pretoria

Pretoria National Botanical Garden
2 Cussonia Avenue, Brummeria

Wonderboom Airport
122 Linvelt Road, Onderstepoort

Freedom Park
Cnr Koch Street and 7th Avenue, Salvokop

National Zoological Gardens of South Africa
232 Boom Street, Daspoort

Pretoria Art Museum
Cnr Francis Baard and Wessels streets, Arcadia



Groceries

Hatfield

Checkers Loftus

Brooklyn Mall, Cnr Fehrsen and Veale streets, Brooklyn

Hours: 08:30–19:00 (Monday to Friday)
08:00–18:00 (Saturday)
09:00–13:00 (Sunday)

(Hatfield and Groenkloof accommodation)

Pick-n-Pay Hatfield Plaza

Cnr Burnett and Grosvenor streets, Hatfield

Hours: 08:00–20:00 (Monday to Friday)
08:00–17:00 (Saturday)
09:00–15:00 (Sunday)

(Hatfield accommodation)

Pick-n-Pay Hillcrest

361 Lynnwood Road, Hatfield

Hours: 08:00–20:00 (Monday to Friday)
08:00–17:00 (Saturday)
08:00–15:00 (Sunday)

(Hatfield accommodation)

Menlyn Maine Superspar

Cnr Dallas and Aramist avenues, Menlyn

Hours: 08:00–19:00 (Monday to Saturday)
08:00–18:00 (Sunday)

Groenkloof Kwikspar

Cnr George Storrar Drive and Baine Street, Groenkloof

Hours: 07:00–20:00 (Monday to Sunday)

(Groenkloof accommodation)

Woolworths Lynwood

361 Lynnwood Road, Hatfield

Hours: 08:30–20:00 (Monday to Friday)
08:00–18:00 (Saturday)
09:00–17:00 (Sunday)

(Hatfield accommodation)

Onderstepoort

Bon Accord Spar

841 Old Main Road, Bon Accord

Hours: 08:00–18:00 (Monday to Friday)
08:00–15:00 (Saturday)
08:00–13:00 (Sunday)

(Onderstepoort accommodation)

Pick-n-Pay Wonderboom Junction

Cnr Lavender and Lavender East roads, Wonderboom

Hours: 09:00–19:00 (Monday to Friday)
08:00–17:00 (Saturday)
09:00–17:00 (Sunday)

(Onderstepoort accommodation)

Woolworths Wonderboom Junction

Cnr Lavender and Lavender East roads, Wonderboom

Hours: 09:00–18:00 (Monday to Thursday)
09:00–19:00 (Friday)
08:00–18:00 (Saturday)
09:00–17:00 (Sunday)

(Onderstepoort accommodation)



Quick bites

Pretoria is home to a number of fantastic restaurants. To get an idea of the restaurants that are available to you, download the Zomato app to find trending restaurants, as well as to search restaurants by categories. The following list includes popular take away restaurants in Hatfield.

McDonald's Hatfield

Cnr Hilda and Burnett streets, Hatfield

Hours: Open 24 hours

Burger King Hatfield

1066 Burnett Street, Hatfield

Hours: 09:00–22:00 (Sunday to Wednesday)
09:00–24:00 (Thursday to Saturday)

Steers Plaza Hatfield

Engen Garage, 1303 Pretorius Street, Hatfield

Hours: Open 24 hours

Uncle Faouzi Hatfield

1122 Burnett Street, Hatfield

Hours: Open 24 hours

KFC Hatfield

1084 Burnett Street, Hatfield

Hours: Open 24 hours

Domino's Pizza Hatfield

1066 Burnett Street, Hatfield

Hours: 10:00–22:00 (Sunday to Thursday)
10:00–24:00 (Friday to Saturday)

Kung Fu Kitchen

495 Hilda Street, Hatfield

Hours: 11:00–22:00 (Monday to Sunday)

Debonairs Pizza Hatfield Plaza

Engen Garage, 1303 Pretorius Street, Hatfield

Hours: Open 24 hours



Reservations

Email: tuksres.guest@up.ac.za

Tel: +27 (0)12 420 5385/6395



Make today matter