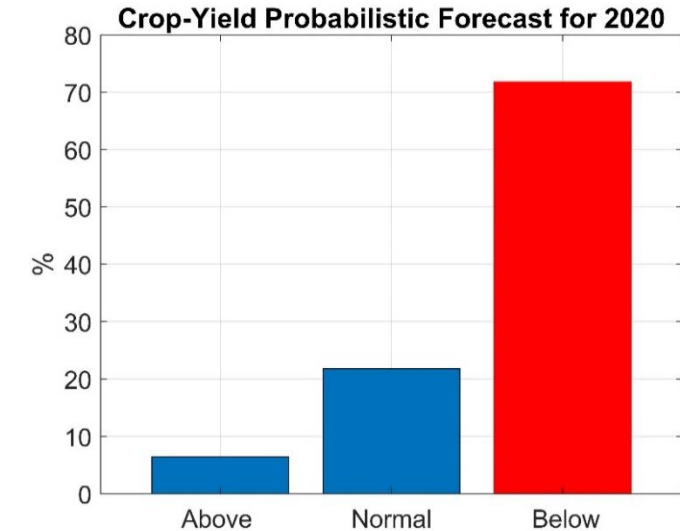
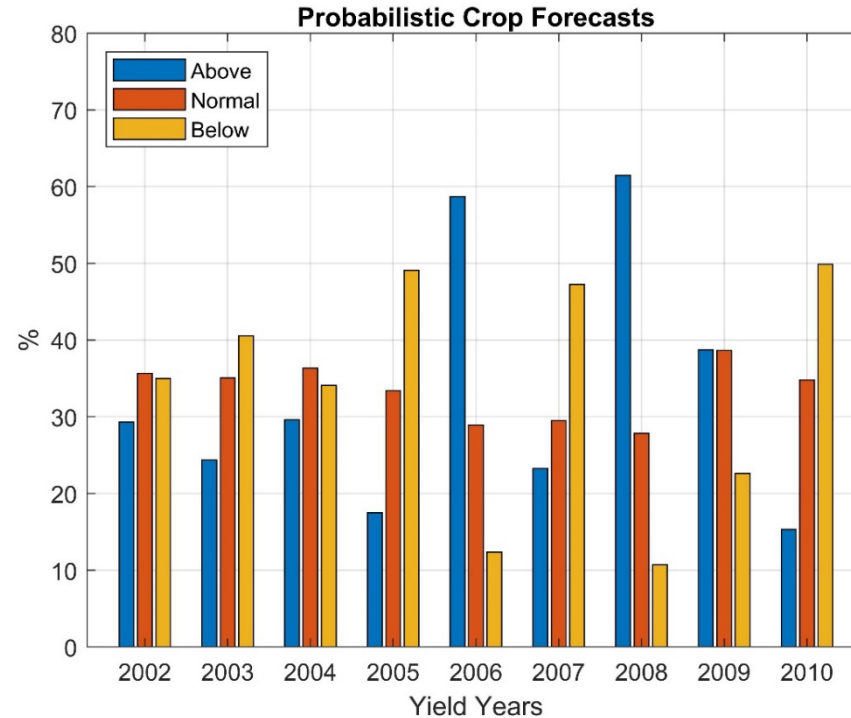
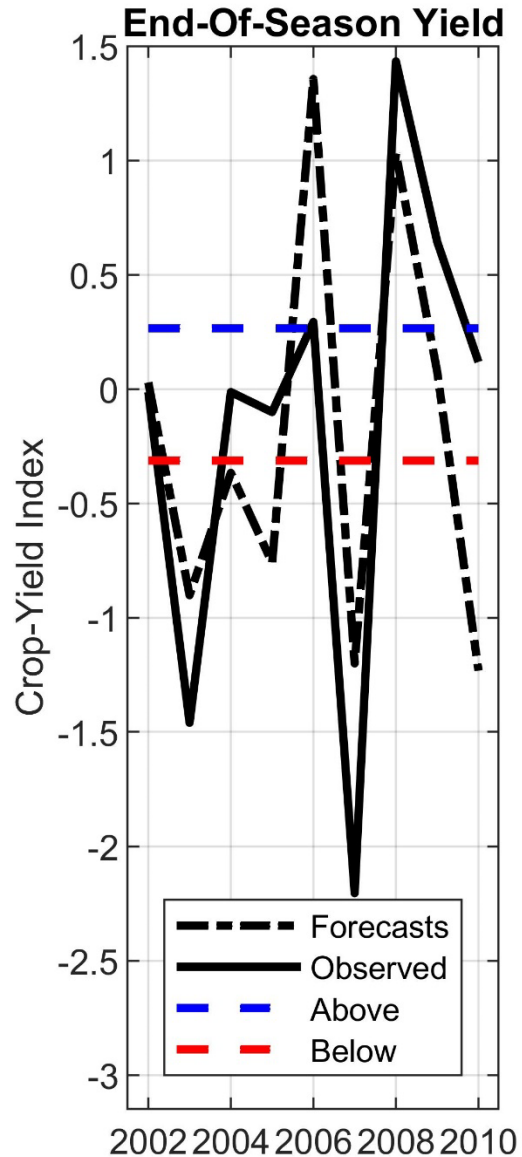


**Are you a farmer who wants to make use of science-based seasonal predictions for your farm? If you are interested to be part of an initiative at the University of Pretoria that involves the development of seasonal forecast systems for farms, specifically tailored to farmers' needs, please send an email to [WALandman1981@gmail.com](mailto:WALandman1981@gmail.com)**

**Have a look at this example of end-of-season crop yield forecasts for a farm near Bapsfontein. The farmer provided several decades of crop-yield data and these data were subsequently used to create a crop forecast model specific to the farm**



**Above is the crop-yield forecast for the coming season. The forecast is for enhanced probabilities of **below-normal** (low) crop yield for the farm. The farmer may be able with support to use this forecast information to plan for the coming season**

**On the left are time series of forecast and observed crop yields at the time of harvest for the years indicated. Next to the time series are probabilistic forecasts over the same 9-years for below- (low yields), near- (about average) and above-normal (high yields). For example, in 2008 the forecast and observed index values are high and positive (figure on the left), and the highest predicted probability is for above-normal yield (figure in the middle).**

**Share your data and become part of this initiative**