

Probabilistic minimum temperature forecasts for AMJ, MJJ and JJA 2020 (issued in March)

Forecasts are a result of collaboration with Dr. Christien Engelbrecht of the South African Weather Service

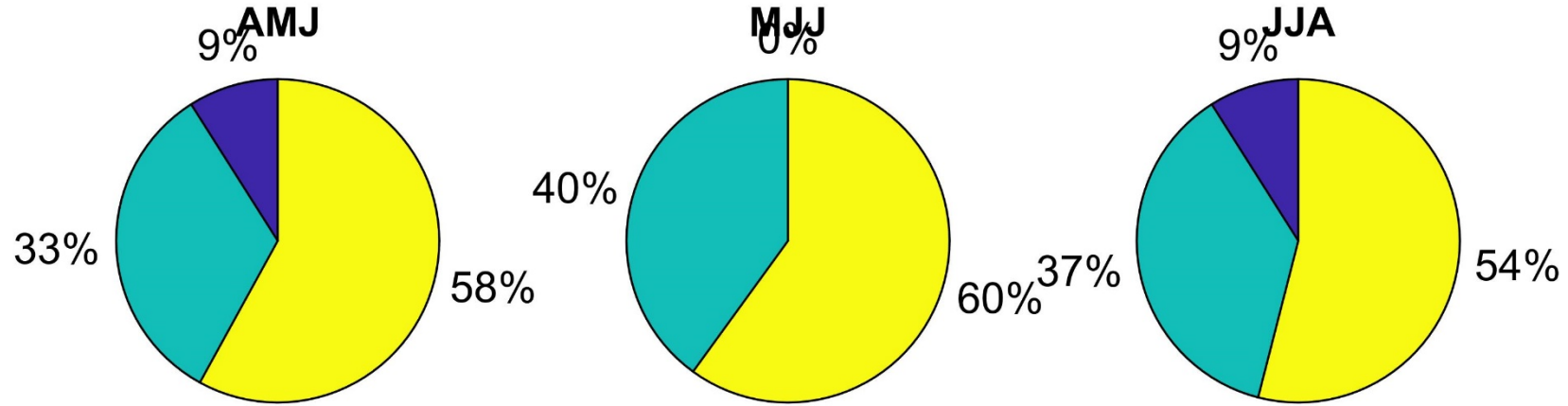


UNIVERSITEIT VAN PRETORIA
UNIVERSITY OF PRETORIA
YUNIBESITHI YA PRETORIA



South African
Weather Service

Min Temp Cape Town



10.1
10.3
10.8
11

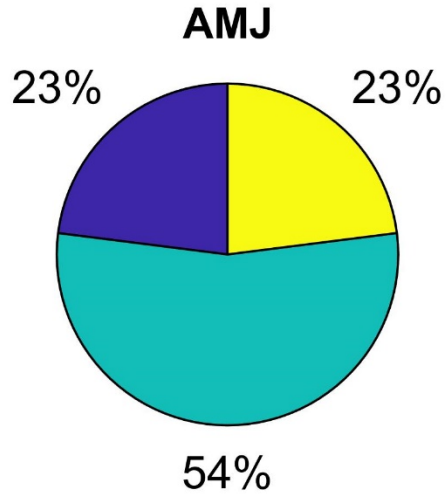


8.3
8.4
8.9
9.1

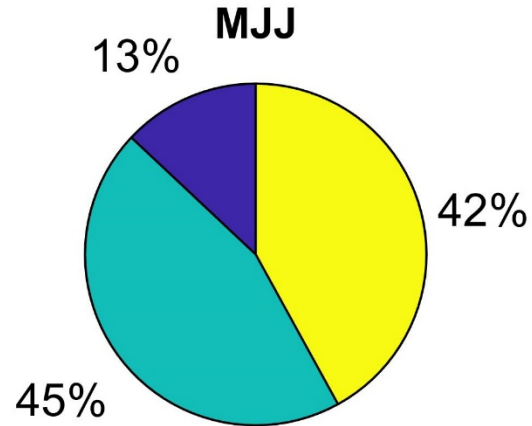


7.2
7.5
8
8

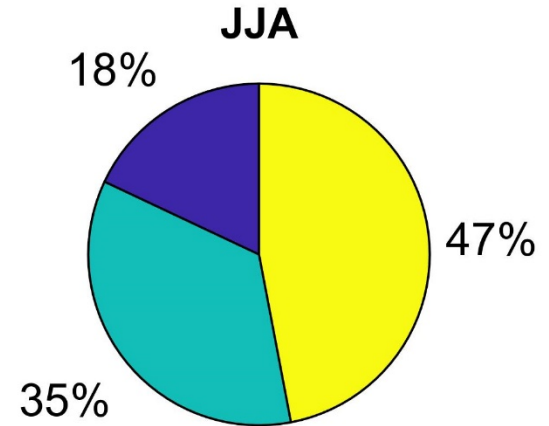
Min Temp Port Nolloth



10.1
10.3
12.3
12.3

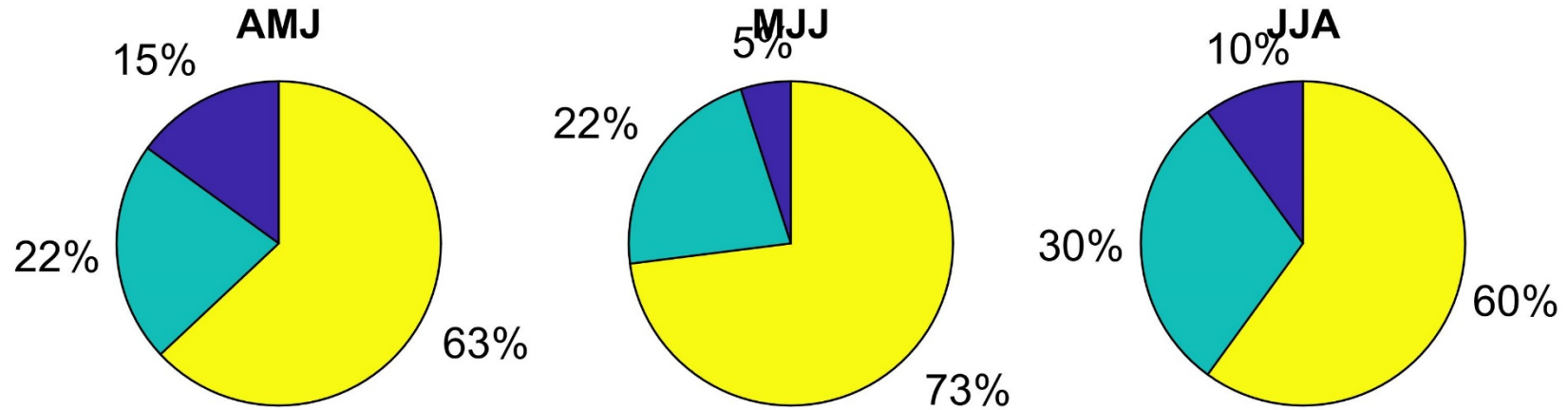


8.2
8.6
10.1
10.3



7.6
7.7
8.9
9.4

Min Temp George



6.2
6.5
7.2
7.4

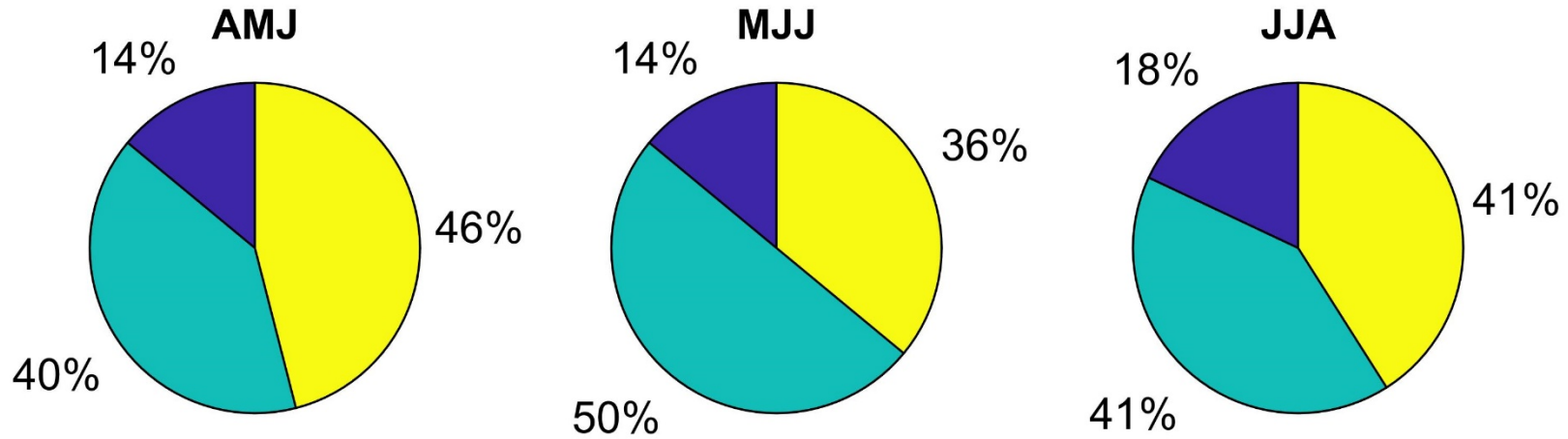


4
4.4
4.9
5.1



3.4
3.6
4
4.1

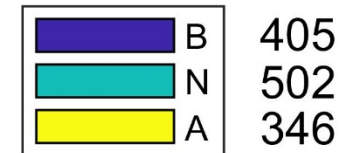
Min Temp Port Elizabeth



9.5
9.8
10.2
10.4

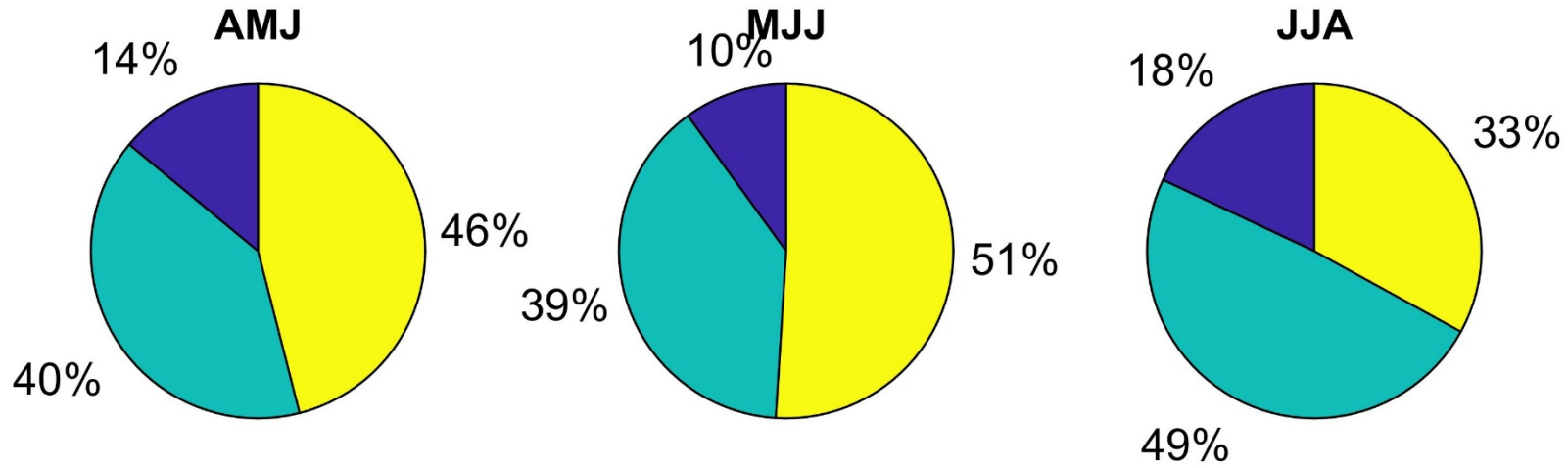


7.7
7.7
8.3
8.6



6.9
7.1
7.7
7.8

Min Temp East London



10.3
10.5
10.9
11.1

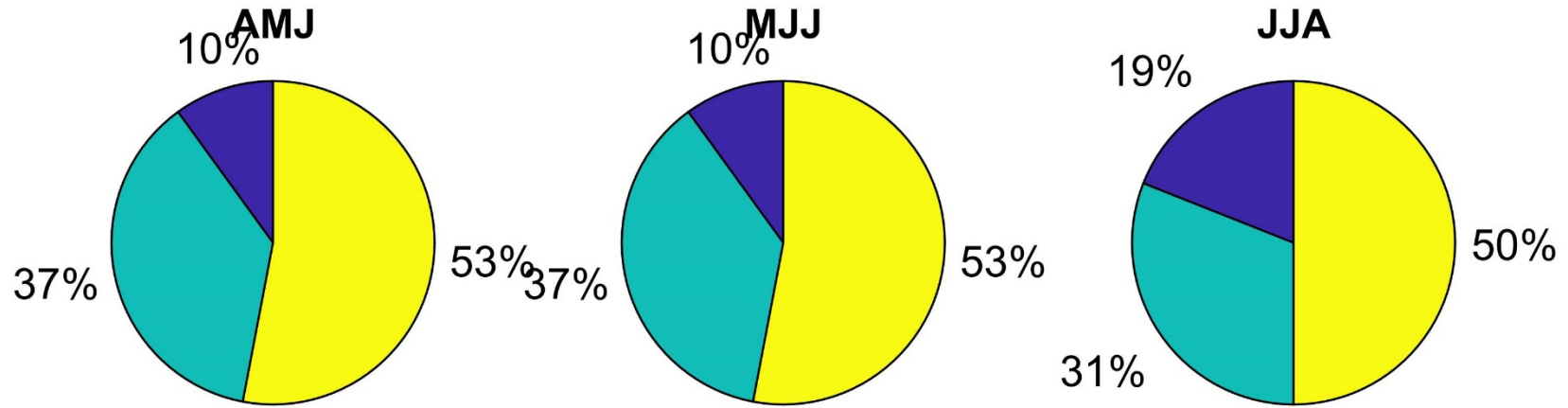


8.4
8.5
9.1
9.2



7.8
7.9
8.5
8.6

Min Temp Mthatha



9.3
9.5
10.1
10.2

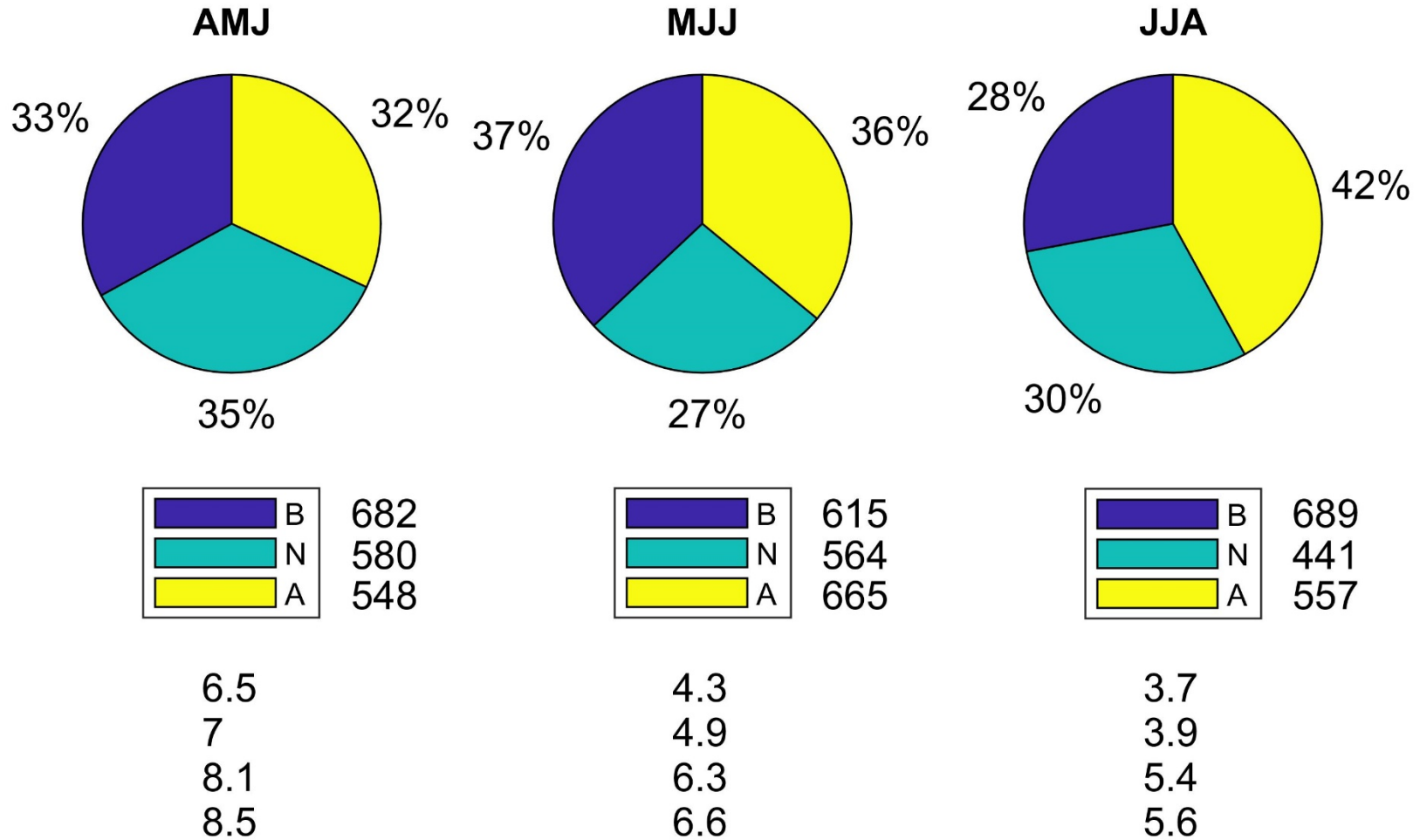


7.1
7.4
8.1
8.2

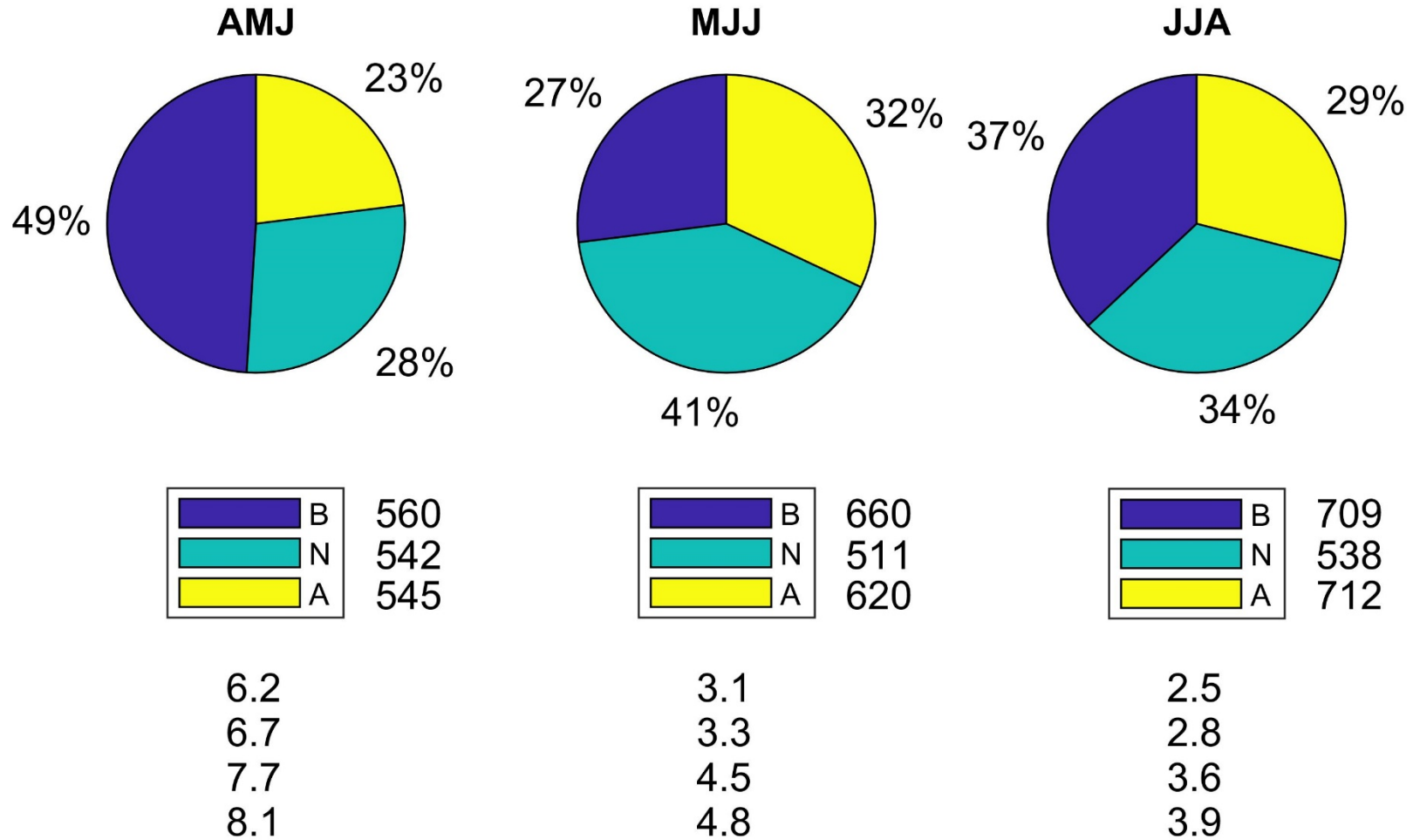


6.6
6.7
7.5
7.5

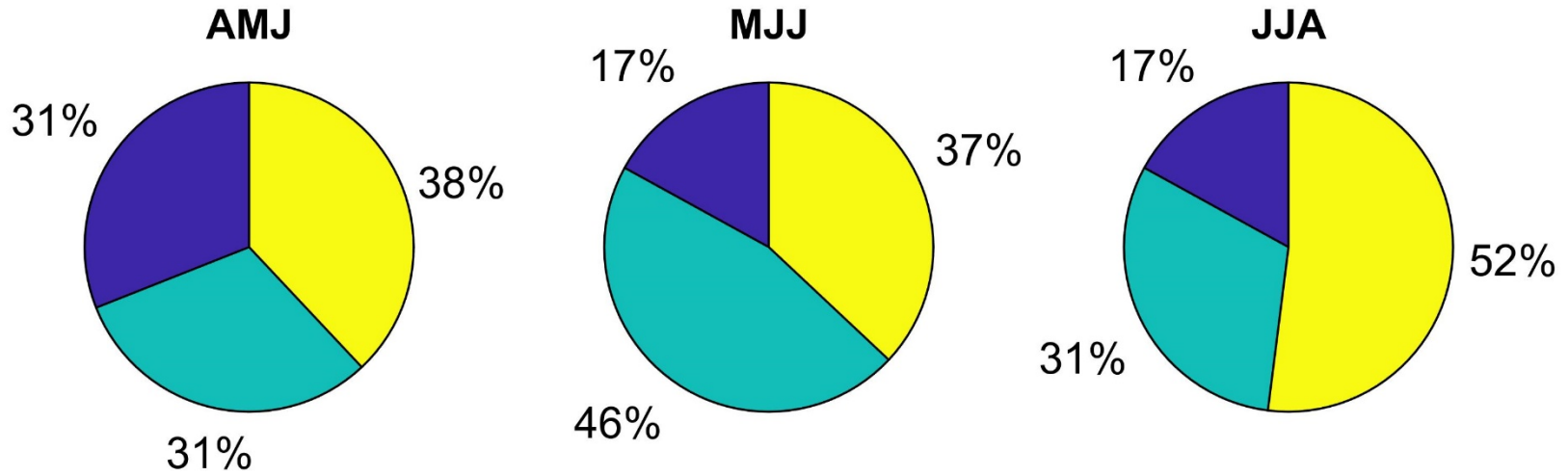
Min Temp Beaufort West



Min Temp Prieska



Min Temp Upington



8.3
8.4
9.2
9.6

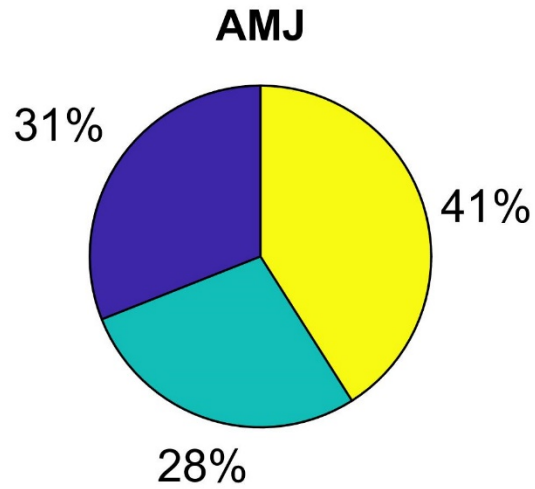


4.9
5.4
6.2
6.3

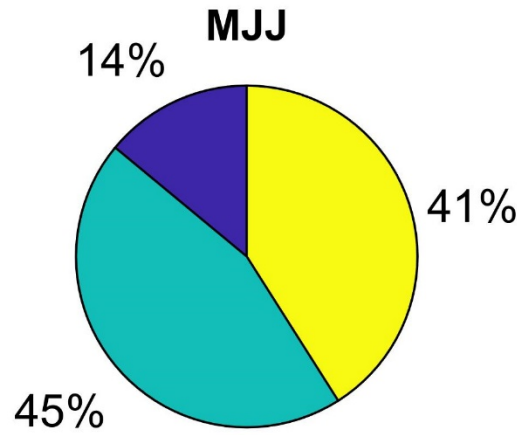


3.8
4.3
5.2
5.4

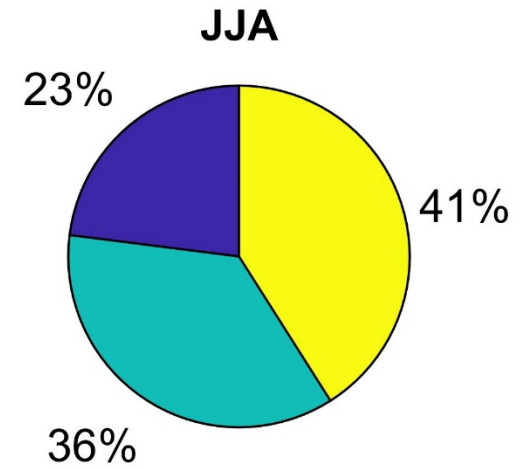
Min Temp Mmabatho



7.4
7.5
8
8.3

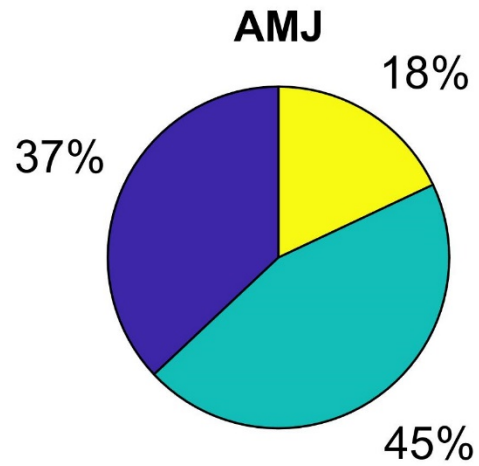


4.8
4.8
5.3
5.6

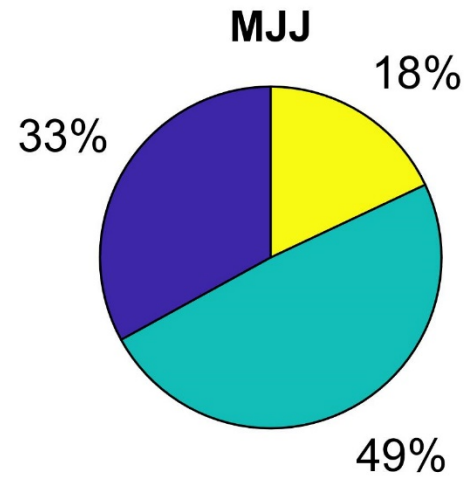


4.5
4.6
5.1
5.2

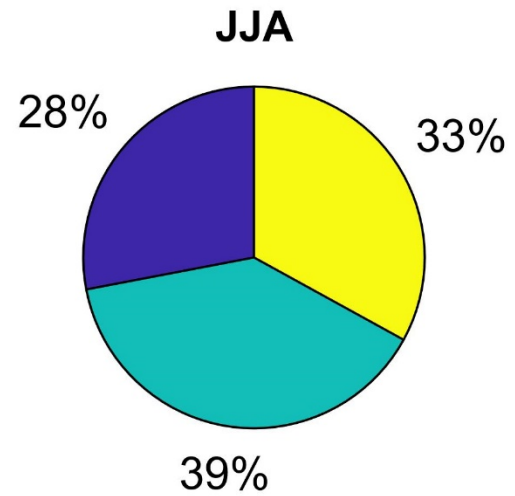
Min Temp Bloemfontein



2.4
2.7
3.8
3.9

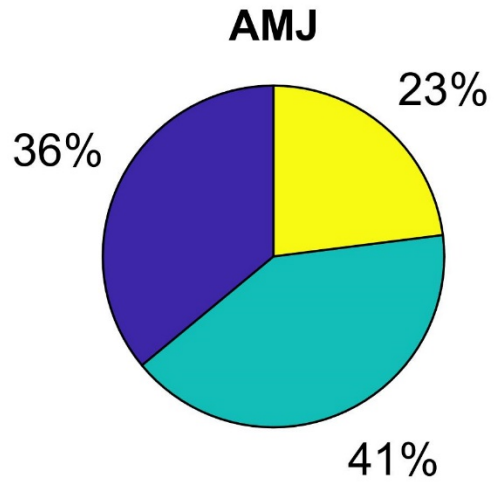


-0.6
-0.2
0.5
1.1

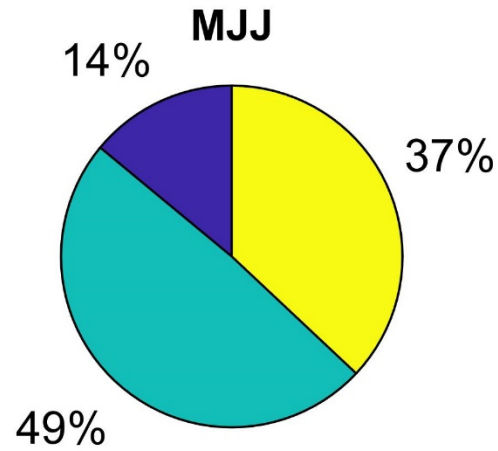


-0.9
-0.6
-0.2
0.2

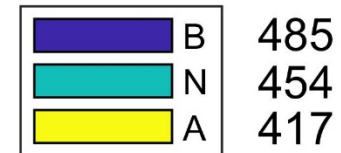
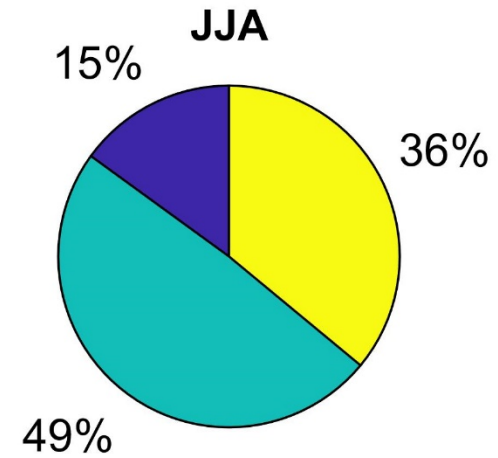
Min Temp Potchefstroom



4.6
4.7
5.5
5.7

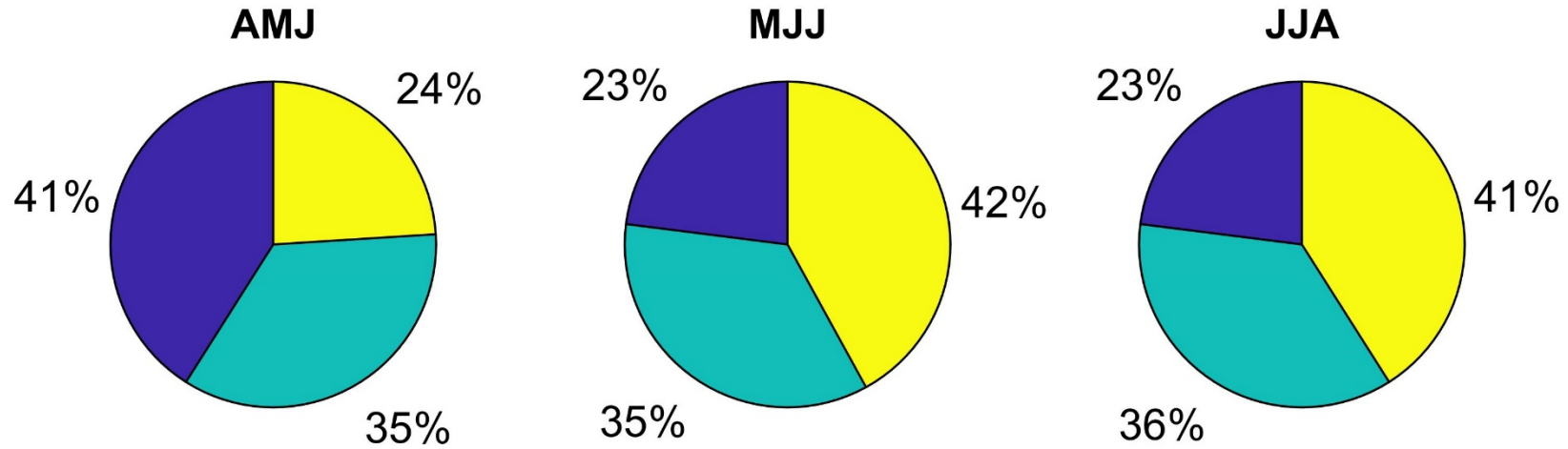


1.7
1.8
2.6
2.7



1.7
1.7
2.3
2.4

Min Temp Gauteng



4.9
5.2
6.2
6.3

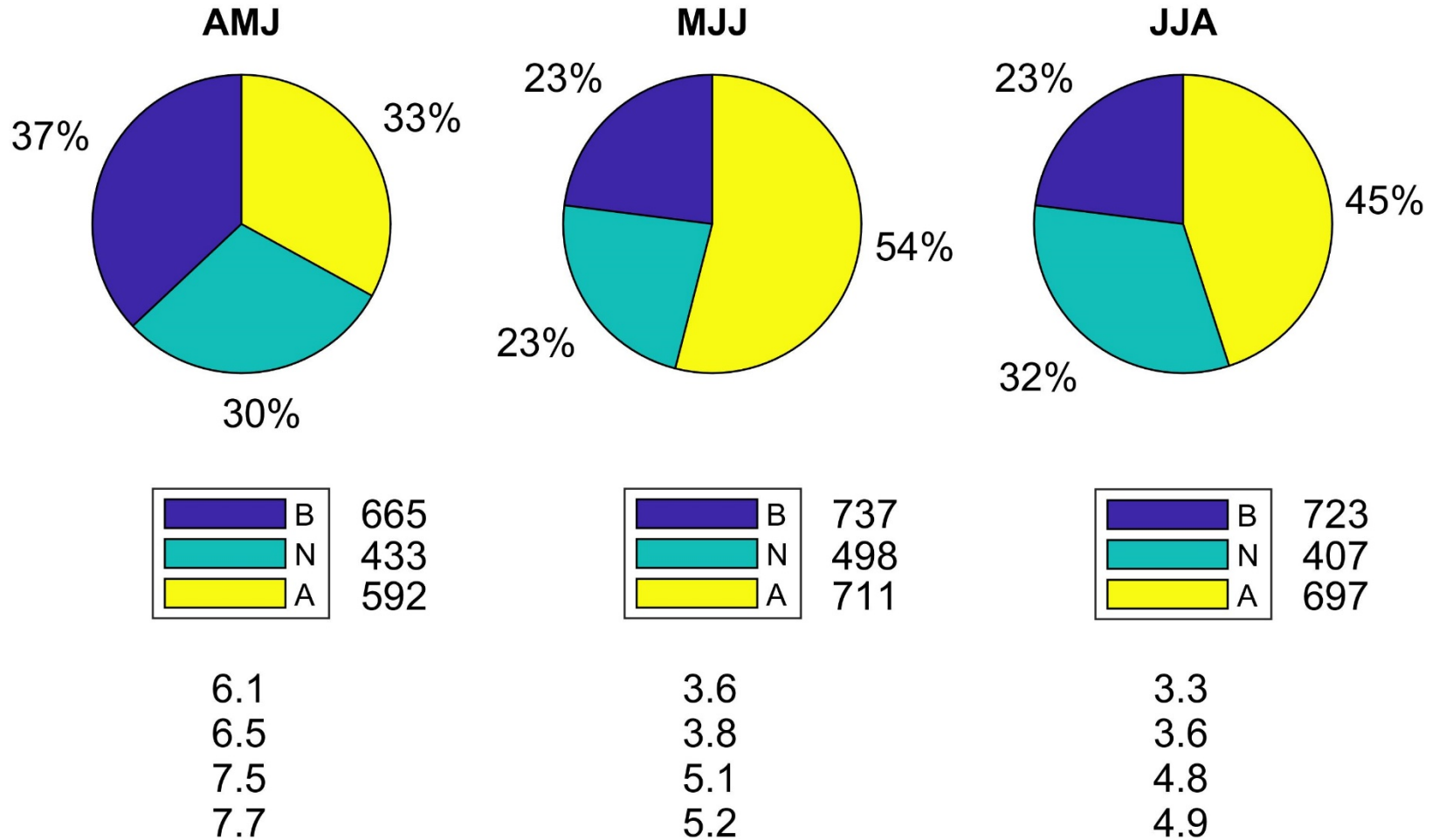


2.4
2.7
3.2
3.4

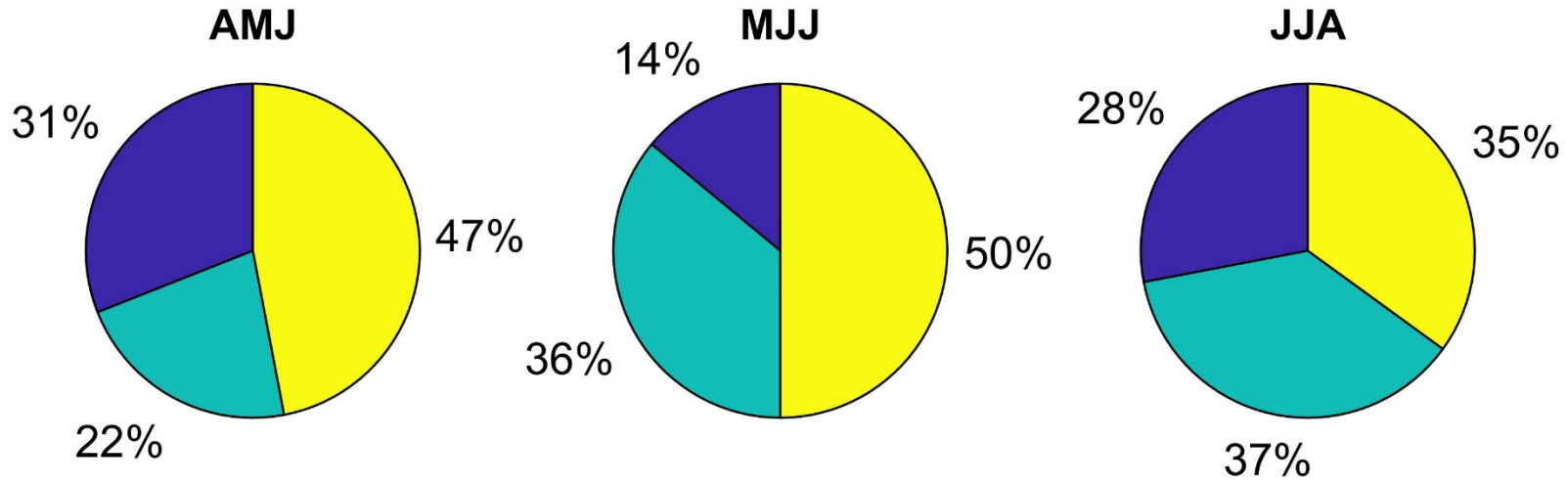


2
2.3
3
3.1

Min Temp eMalahleni



Min Temp Musina



12.5
12.7
13.4
13.6

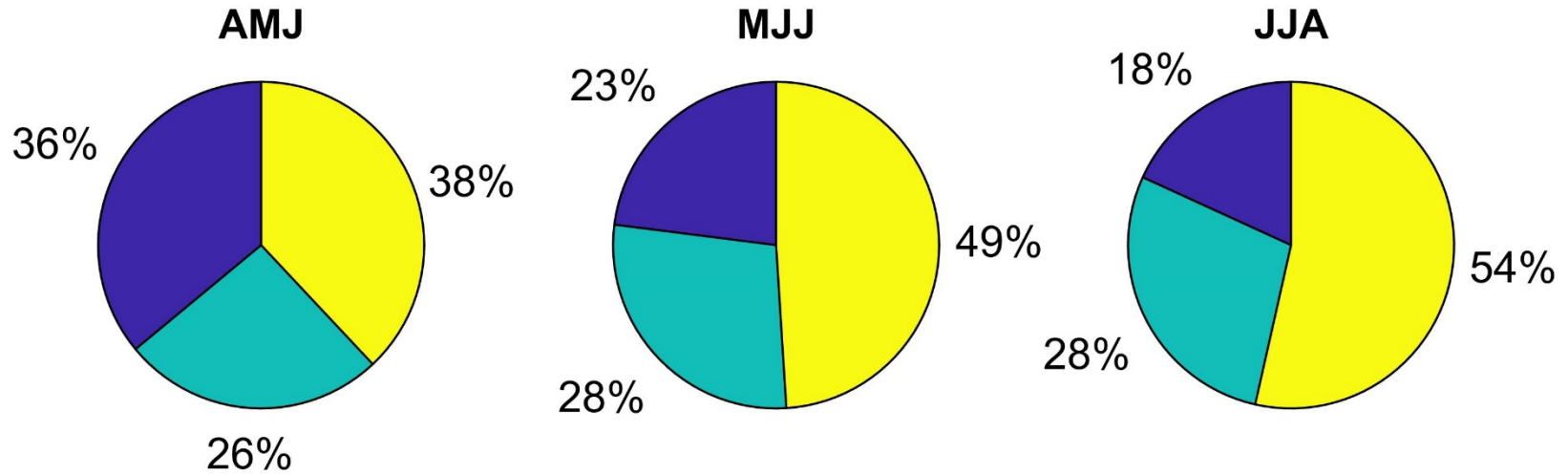


9.8
9.9
11
11.2



9.5
9.7
10.5
10.8

Min Temp Polokwane



8.3
8.6
9.1
9.3

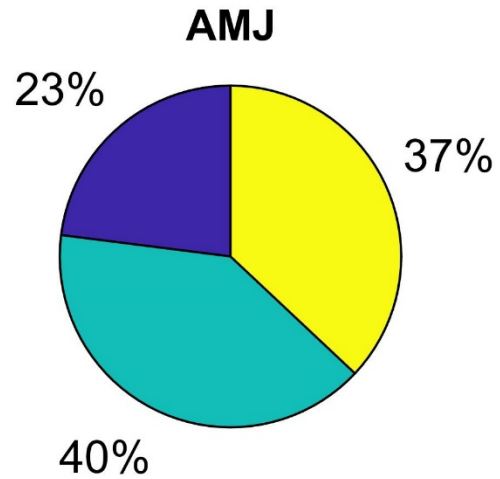


5.8
5.9
6.6
6.7

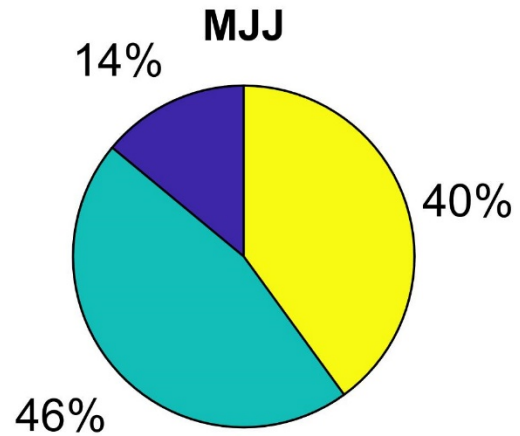


5.5
5.6
6.2
6.5

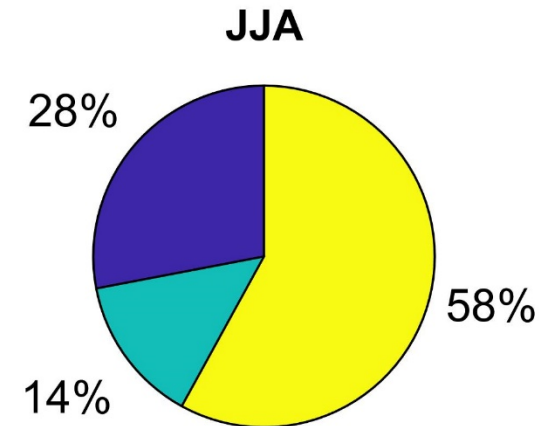
Min Temp Skukuza



11.5
11.7
12.6
12.7

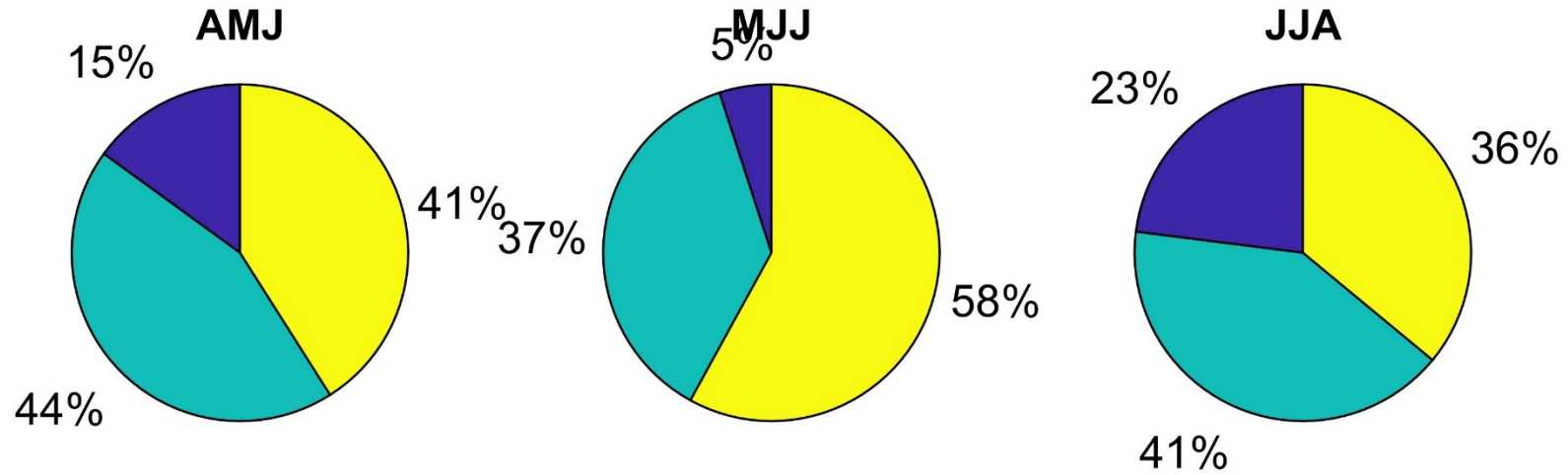


8.7
9.1
9.8
10.2



8.2
8.6
9.5
9.6

Min Temp Pietermaritzburg



7.4
7.6
8.6
8.8

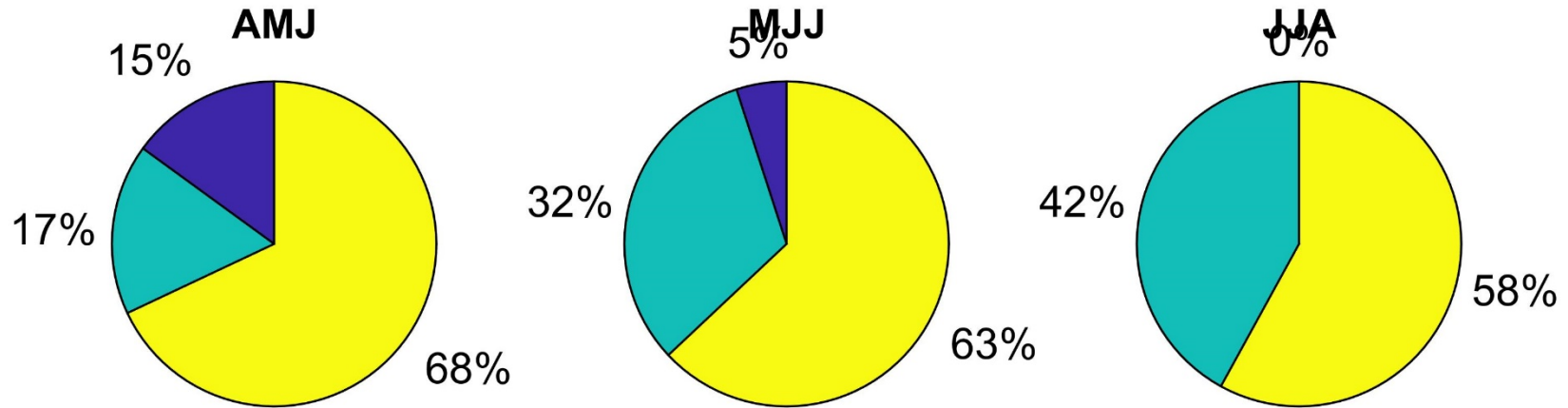


4.9
5.1
6.1
6.4



4.7
4.9
5.8
6

Min Temp Durban



9.1
9.3
9.8
10.1



6.7
7.1
7.4
7.8



6.6
6.7
7.2
7.5