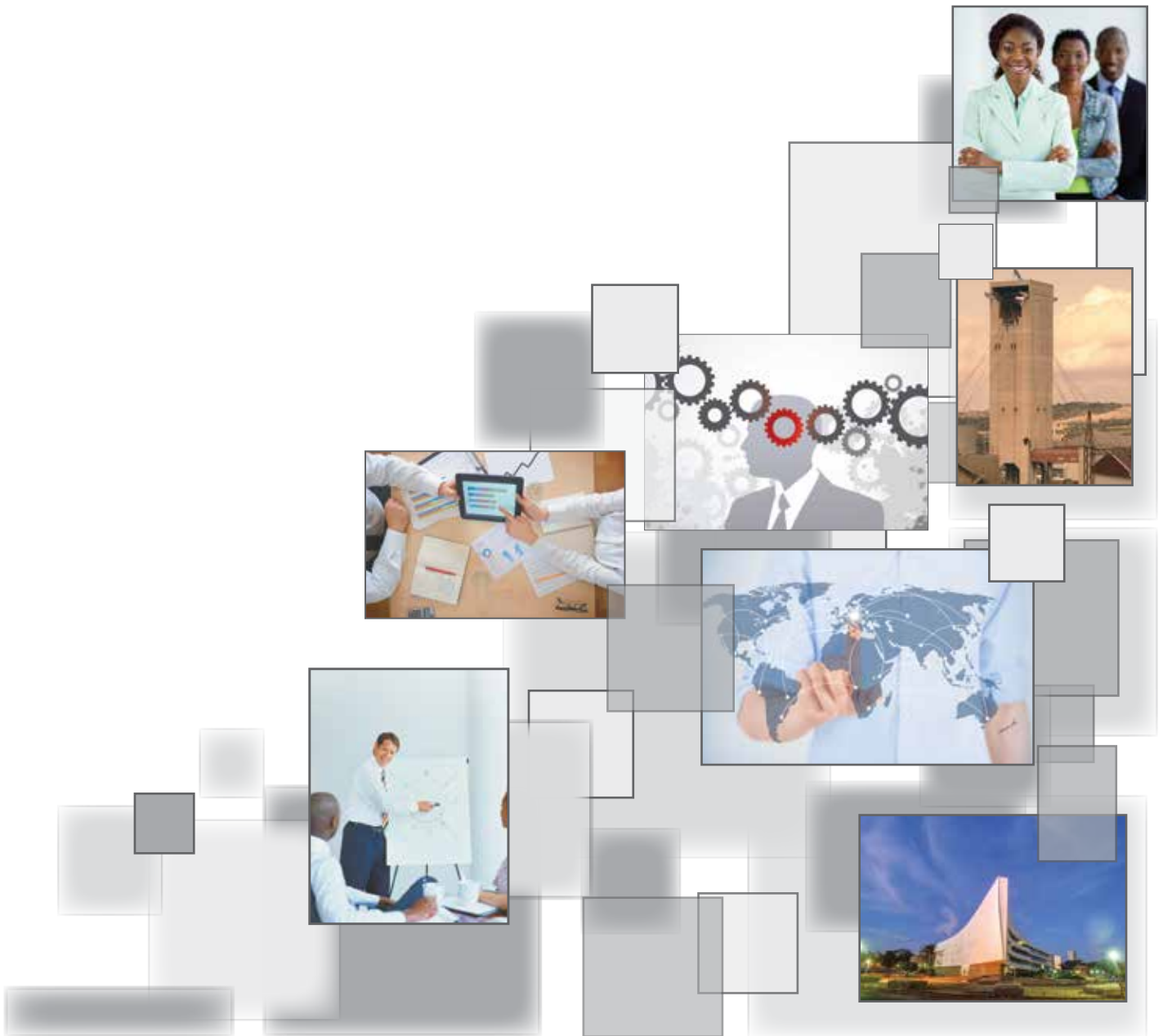


Graduate School of Technology Management GSTM Masters in Project Management MPM 2015



UNIVERSITEIT VAN PRETORIA
UNIVERSITY OF PRETORIA
YUNIBESITHI YA PRETORIA
Graduate School of Technology Management



Masters in Project Management

Doing MPM has helped me approach projects with confidence. I have learned the importance of considering stakeholders and human resources. I have gained the knowledge of viewing projects from a system perspective which considers the full life cycle of a project.

Philla Sithole, 2009

Project Management

Internationally, Project Management (PM), has become the fastest growing form of management. Projects and the effective management thereof form the basis of any growing economy. Developing countries need the effective management of industrial and infrastructure projects to even a greater degree than developed economies do.

Project Management is widely hailed as the “lynchpin of organisational success” and the “number one career choice”. One of the reasons is that the tools, techniques and paradigms unique to Project Management, provide the capacity to deal effectively with rapid, radical change resulting from fierce international competition and advancements in technology. Project managers are generalists that are exposed to all aspects of the organisation. This exposure also prepares them for positions as general managers.

PM has its roots in engineering and almost all engineers are involved in projects in one way or the other. Some engineers however, choose to make PM the central focus of their careers. These engineers typically manage large projects or in some cases portfolios of projects.

Purpose of the MPM

The purpose of the Masters in Project Management (MPM) is to provide relevant, highlevel project management education for the practicing engineer and scientist pursuing a career in project management in primarily technology-based enterprises. While the programme teaches the fundamentals of project management in its simplest form, of more importance is learning to integrate projects with a company’s strategic intent. Another strong focus of MPM is on the people, financial, and cost management side of projects. Many companies are focusing on core business and outsourcing other processes. The programme also covers the key elements of procurement and legal aspects of project management (specifically labour law and contract law).

International Accreditation

The MPM Programme, offered by the Graduate School of Technology Management (GSTM) was awarded full accreditation in 2008 by the Global Accreditation Center for Project Management Education Programs (GAC), of the Project Management Institute, USA.



Domain Specialisation

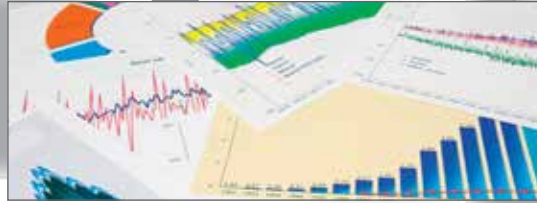
Domain specialisation allows an exciting and meaningful expansion of the programme. The domain model provides the opportunity for a number of derivatives based on a single platform with a similar architecture, while responding to the specific needs of various industries. Students complete their first study year and then follow the general programme option or select a domain for their second year. Summary of the two available domains:

- **Construction Management Domain**

This domain is aimed at the Construction Industry including three specialised Construction Management modules. An overview of the construction business is provided with specific focus on the project management aspects thereof. International best practise, entrepreneurship and unique South African challenges are addressed.

- **Engineering Services Management Domain**

The international economy is fundamentally changing from product based (manufacturing) to a more service orientated economy. South Africa has a dual economy, i.e. product (manufacturing) and services based. This domain addresses the fundamentals of services science in the engineering type of environment. The design and delivery of services are explored. Relevant management approaches, e.g. complex adaptive systems (CAS) are studied. Web-based service delivery, required technology support and a human systems perspective are addressed.



Learning Model

The programme is offered on a part-time, modular basis over two years. The time available for class attendance is limited. Student/lecturer contact is crucial. In view of the above, candidates are expected to free themselves completely from other duties during block weeks. Candidates will be expected to work in the evenings and over weekends during study blocks, and attendance is compulsory.

The programme is structured around two study blocks per year. The first two-week contact block is scheduled typically during February, and the second during August. Web-based support is provided to create a virtual classroom and an e-learning experience. For this reason all students are required to have access to the Internet via a suitable browser. Students must be able to take part in discussions using the Internet. Lecturers facilitate distance learning (group and individual activities) throughout each academic cycle. It is expected of participants to attend the contact sessions fully prepared.

Assignments are done before, during and after the class contact sessions. Group interaction is emphasised as an integral part of learning and personal development. A balance between theory and practice, individual and group activity, class contact and distance support, is strived at. A personal development programme is integrated into the academic activities of the MPM.

Assessment

Assessment takes the form of individual and group assignments, oral presentations, tests and written examinations. Students are allowed, and indeed encouraged to use challenging areas in their work environment as subject material for assignments. A final year symposium where students present their research concludes the MPM.

Qualifications Awarded

Two types of qualifications are awarded: MEng (Project Management) and MSc (Project Management), depending on the undergraduate qualification of the student. Course structure, content and duration are nominally the same in both cases.

Admission and Selection

Admission is competitive and a selection committee carefully screens applicants. Selection procedures may include a personal interview. Compliance with the criteria does not guarantee admission.

The medium of instruction is English.

A TOEFL or IELTS test may be required of candidates who have not studied the prerequisite degree through the medium of English.

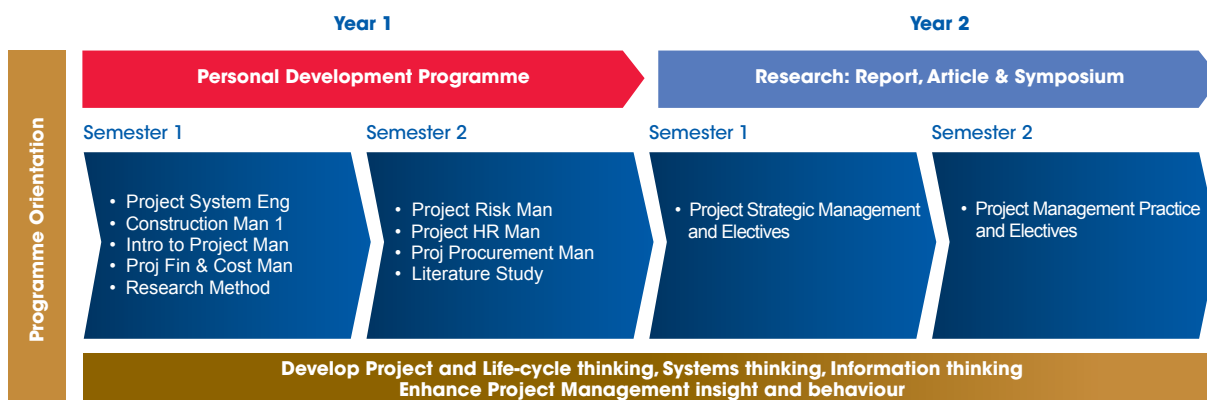
Admission Criteria

Candidates for the MEng degree must be in possession of a four-year Bachelors degree in Engineering from a recognised institution and have at least 3 years' relevant postgraduate experience.

Candidates for the MSc degree must be in possession of a BSc degree as well as a BSc Honours degree (four study years) in a suitable scientific field and also have at least 3 years' relevant postgraduate experience.

Only applicants with a minimum average of 60% (calculated on the grades of all the final year modules (failed/passed) for the prerequisite degree) will be considered for registration for the MSc (Project Management) degree.

Outcome and Architecture



Application and Closing Date

1. Application at UP

Any person who wishes to register at the University for the first time, or after an interruption of studies: Please complete the on-line University's Application form at www.up.ac.za and click on "Apply at UP".

OR

To receive a hard copy application form, please contact the Client Service Centre at csc@up.ac.za or 012 420 3111. A hard copy application form will then be posted to you.

2. Application for selection to MPM

Please complete the application form at www.up.ac.za/gstm/mpm

This application for admission to the programme as well as a copy of the form to register at UP, should go to the Programme Administrator, Tanya van Zyl, Engineering Building 2, Room 2-12, University of Pretoria, Lynnwood Road, Pretoria, 0001.

The closing date for applications for 2015 is 31 October 2014.

Programme Fees

The total fee will be approximately R 100 000. The fee includes tuition, textbooks, study material and meals on campus. These fees are applicable for 2015 and apply to students completing the programme within the prescribed two-year period. The fees are typically payable as follows: 60% in the first year, and 40% in the second year. Where necessary, arrangements can be made to pay each year's portion in two equal installments. In the case of the programme not being completed in the prescribed two years, a re-registration fee of R 7 500 for a third (final) year is payable. The University reserves the right to increase fees annually. Students who do not have South African citizenship are liable for an additional R 2 500 per annum administration fee.

Distance examinations are arranged for students who apply, but at an extra cost of R 550 per examination paper within the RSA and SADC countries and R 1 100 per examination paper for international countries. Examination fees are reviewed annually, and could thus be higher in 2015. Fees will be finalised towards the end of the year, typically during November.

Contact Details

Tanya van Zyl

Programme Administrator

Tel: +27 12 420 4764

Fax: +27 12 420 6700

E-mail: tanya.vanzyl@up.ac.za



Certificate Programmes in Project Management

The Graduate School of Technology Management (GSTM) offers several certificate programmes in project management with Continuing Education at University of Pretoria (Pty) Ltd. The goal with these programmes is to develop individual and organisational skills for individuals and organisations that do not want to go the formal degree route or do not comply with the admission criteria for doing a masters programme.

Completion of the certificate courses will not qualify you for entrance to MPM.

One year courses in Project Management

- Programme in Project Management (PPM) www.ppm.up.ac.za
- Advanced Programme in Project Management (APPM)

Short courses in Project Management

- Project Management Principles and Practices
- Project Management Principles and Practices in Organisations

Method of presentation

Lectures and group work during course days. Assessment takes the form of practical assignments that solve real problems in the workplace.

Further information on Certificate Programmes

Amanda Mostert

Tel: +27 12 420 5043

E-mail: amanda.mostert@ce.up.ac.za

www.ceatup.co.za