



**University of Pretoria**  
*Department of Economics Working Paper Series*

**Housing Market Spillovers in South Africa: Evidence from an Estimated Small Open Economy DSGE Model**

Rangan Gupta

University of Pretoria

Xiaojin Sun

University of Texas at El Paso

Working Paper: 2016-41

May 2016

---

Department of Economics  
University of Pretoria  
0002, Pretoria  
South Africa  
Tel: +27 12 420 2413

# Housing Market Spillovers in South Africa: Evidence from an Estimated Small Open Economy DSGE Model

Rangan Gupta\*    Xiaojin Sun<sup>†</sup>

May 19, 2016

## Abstract

This paper evaluates, for the first time, the impact of housing market spillovers on a small open economy, namely South Africa, using a small-open economy new Keynesian dynamic stochastic general equilibrium model (SOE-NKDSGE) which explicitly incorporates a housing sector. Using quarterly data covering the period of 1971:Q1-2015:Q3, we obtain the following set of results: (a) Over the business cycle, the housing preference shock and the technology shock in the consumption sector drive most of the fluctuations of real house price; (b) The spillover effects of the housing market to the boarder economy are not negligible; (c) The central bank of South Africa has actively responded to house price movements over the past 45 years; and (d) The flexible exchange rate policy has helped South Africa maintain the macroeconomic stability to a large extent.

**Keywords:** Housing Market, Spillovers, Monetary Policy, Dynamic Stochastic General Equilibrium Model, South Africa

**JEL Classification:** E21, E32, E44, E52, R31

---

\*Professor, Department of Economics, University of Pretoria, South Africa. E-mail: Rangan.Gupta@up.ac.za.

<sup>†</sup>To whom correspondence should be addressed. Assistant Professor, Department of Economics and Finance, University of Texas at El Paso, USA. E-mail: xsun30@utep.edu.

# 1 Introduction

The housing market meltdown associated with the subprime mortgage crisis of 2007 led to the worst global financial and economic crisis since the "Great Depression" ([André et al. \(Forthcoming\)](#)). This has resulted in a proliferation of research on the importance of the housing market in terms of the general economy in both advanced and developing/emerging countries (see [Cesa-Bianchi \(2013\)](#), [Hirata et al. \(2013\)](#), and [Cesa-Bianchi et al. \(2015\)](#)). Though it is true, that research on housing market spillovers did exist even prior to the recent financial crisis, it was basically part of real estate economics, and in addition, was primarily (barring few exceptions like [Davis and Heathcote \(2005\)](#) and [Iacoviello \(2005\)](#)) limited to atheoretical regression-based analyses (see [Nyakabawo et al. \(2015\)](#) for a detailed review in this regard). However, the recent global crisis led to the need for deeper modelling of the housing market using microfounded structural dynamic stochastic general equilibrium (DSGE) models ([Iacoviello \(2010\)](#) and [Iacoviello and Neri \(2010\)](#)). This transition was natural as housing became part of mainstream economics, and warranted the need to understand better as to where the shocks to the housing market, and in particular house prices, originated from in their process of affecting the business cycle through the wealth effect ([Iacoviello \(2010\)](#)).

Against this backdrop, the objective of this paper is to evaluate for the first time, the impact of housing market spillovers on a small open economy, namely South Africa, using a small-open economy new Keynesian dynamic stochastic general equilibrium model (SOE-NKDSGE). Given that housing wealth accounts for 50.05 percent of household's total assets and 38.41 percent of households net worth ([Aye et al. \(2014\)](#)), it is not surprising that there is ample research that looks into and documents significant housing market spillovers on both the national and regional economies of South Africa (see for example [Das et al. \(2011\)](#), [Peretti et al. \(2012\)](#), [Simo-Kengne et al. \(2013a\)](#), [Simo-Kengne et al. \(2015\)](#), [Simo-Kengne et al. \(2013b\)](#), [Simo-Kengne et al. \(2012\)](#), [Simo-Kengne et al. \(2014\)](#), [Aye et al. \(2013\)](#), [Aye et al. \(2014\)](#), [Inglesi-Lotz and Gupta \(2013\)](#), [Apergis et al. \(2014\)](#), and [Chang et al. \(2013\)](#)). However, all these studies rely on linear regressions, and variations of vector autoregressive (VAR) or vector error-correction (VEC) frameworks based on time-series or panel data. These types of models involve only a few variables and therefore tend to be misspecified ([Paetz and Gupta \(Forthcoming\)](#)). As a consequence, the results from these studies could be biased and

probably differ from the true magnitude of the wealth effects of house price. Further, with these approaches being atheoretical and nonstructural, they suffer from the [Lucas \(1976\)](#) critique. The DSGE based approach treats house prices as endogenous and determines the underlying shocks that move house prices in the first place, and allows us to detect (possible) different impacts on the real economy depending on what type of shocks drive the housing market. Using a theoretical framework helps understanding the wealth channel, quantify its importance, and also provide recommendations for policy-makers, especially central bankers.

Besides the fact that housing market spillovers could be inflationary if they significantly affect aggregate demand through consumption, the recent financial crisis has rekindled the debate on whether central banks should conduct monetary policy in a more active manner to prevent the development of bubbles that can be costly in terms of future output and financial stability ([André et al. \(2012\)](#) and [Sun and Tsang \(2014\)](#)). The papers, namely that of [Peretti et al. \(2012\)](#), [Simo-Kengne et al. \(2013a\)](#), [Simo-Kengne et al. \(2015\)](#), [Simo-Kengne et al. \(2013b\)](#), [Simo-Kengne et al. \(2012\)](#), and [Simo-Kengne et al. \(2014\)](#), which investigates the behaviour of the interest rate in response to house movements in South Africa, suggest that the South African Reserve Bank (SARB) responds significantly to house price movements. However, according to [Pariès and Notarpietro \(2008\)](#), [Finocchiaro and Queijo von Heideken \(2009\)](#), and [Paetz and Gupta \(Forthcoming\)](#) these non-microfounded based approaches are again likely to be flawed and produce biased and dispersed estimates. Interestingly, in a recent study, [Paetz and Gupta \(Forthcoming\)](#) use a DSGE model to show that, the so-called significant effects of stock prices on the South African macroeconomy, as observed in the domestic literature of stock market spillover based on atheoretical models,<sup>1</sup> in fact becomes virtually non-existent. The findings of [Paetz and Gupta \(Forthcoming\)](#), in turn, provide us an additional motivation to conduct a DSGE-based study to validate or invalidate the claims of significant housing market spillovers in South Africa made by the atheoretical papers discussed above.

The remainder of the paper is organized as follows: Section 2 describes the model economy. Section 3 estimates the model using Bayesian methods, interprets the impulse response functions,

---

<sup>1</sup>For a detailed discussion of the literature on stock market spillovers in South Africa, see [Aye et al. \(2015\)](#) and [Paetz and Gupta \(Forthcoming\)](#).

and conducts a historical shock decomposition to understand macroeconomic dynamics and housing market fluctuations. Section 4 quantifies the spillover effects of housing market to the broader economy and compares social welfare from the stabilization point of view between the flexible and fixed exchange rate policies. Section 5 concludes the paper.

## 2 Model Economy

The model we use in this paper is based on the DSGE model with housing of [Iacoviello \(2005\)](#) and [Iacoviello and Neri \(2010\)](#) and the small open economy model of [Gali and Monacelli \(2005\)](#). The domestic economy features entrepreneurs (denoted with a subscript  $e$ ) who produce consumption goods and new houses on the supply side and two types of households (denoted with subscripts  $u$  and  $c$ ) on the demand side.

**Entrepreneurs:** There is a continuum of measure one of entrepreneurs. They accumulate capital and hire labor to produce wholesale goods  $Y_t$  and new houses  $IH_t$ . They seek to maximize their lifetime utility:

$$V_e = E_0 \sum_{t=0}^{\infty} \beta_e^t z_t \left( \frac{1 - \epsilon_e}{1 - \beta_e \epsilon_e} \ln(c_{e,t} - \epsilon_e c_{e,t-1}) \right), \quad (2.1)$$

subject to technologies:

$$Y_t = \left( a_{c,t} \left( n c_{u,t}^{\omega} n c_{c,t}^{1-\omega} \right) \right)^{1-\mu_c} (k_{c,t-1})^{\mu_c}, \quad (2.2)$$

$$IH_t = \left( a_{h,t} \left( n h_{u,t}^{\omega} n h_{c,t}^{1-\omega} \right) \right)^{1-\mu_h-\mu_b-\mu_l} (k_{h,t-1})^{\mu_h} (k_{b,t})^{\mu_b} (l_{t-1})^{\mu_l}, \quad (2.3)$$

and a budget constraint:

$$\begin{aligned} \frac{Y_t}{X_t} + q_t IH_t + b_{e,t} = c_{e,t} + \frac{R_{t-1} b_{e,t-1}}{\pi_t} + \sum_{i=\{u,c\}} (w c_{i,t} n c_{i,t} + w h_{i,t} n h_{i,t}) + \frac{k_{c,t} - (1 - \delta_{kc}) k_{c,t-1}}{a_{k,t}} \\ + (k_{h,t} - (1 - \delta_{kh}) k_{h,t-1}) + k_{b,t} + p_{l,t} (l_t - l_{t-1}) + \Phi_t, \end{aligned} \quad (2.4)$$

as well as the following borrowing constraint:

$$b_{e,t} \leq m_e E_t \left( \left( \frac{(1 - \delta_{kc})k_{c,t}}{a_{k,t}} + (1 - \delta_{kh})k_{h,t} \right) \frac{\pi_{t+1}}{R_t} \right), \quad (2.5)$$

which indicates that entrepreneurs' borrowing is limited by a fraction of the present value of their capital stock.

In above equations,  $c$  and  $b$  are consumption and borrowing in real terms;  $q$  is the real house price;  $k_c$  and  $k_h$  stand for capital in the consumption and the housing sectors;  $R$  is a riskless nominal return of loans;  $\pi$  is the gross money inflation in the consumption sector. Entrepreneurs hire labor  $nc$  for the production of consumption goods and  $nh$  for the production of new houses at real wages of  $wc$  and  $wh$ . Entrepreneurs sell consumption goods via retailers who purchase wholesale goods and sell them at a markup  $X$ . Intermediate inputs, land, and the land price are denoted  $k_b$ ,  $l$ , and  $p_l$ . The term  $z_t$  in the utility function captures the shock to intertemporal preferences and it follows an AR(1) process:

$$\ln z_t = \rho_z \ln z_{t-1} + \varepsilon_{z,t}, \quad (2.6)$$

where  $\rho_z$  is the autoregressive parameter;  $\varepsilon_{z,t}$  is an i.i.d. innovation with mean zero and variance  $\sigma_z^2$ .

The terms  $a_c$  and  $a_h$  in the production functions stand for technologies in the consumption and housing sectors. In the budget constraint,  $a_k$  is the investment-specific shock which captures the marginal cost, measured in terms of consumption, of producing capital used in the consumption sector. They all follow AR(1) processes:

$$\ln a_{c,t} = \rho_c \ln a_{c,t-1} + \varepsilon_{c,t}, \quad (2.7)$$

$$\ln a_{h,t} = \rho_h \ln a_{h,t-1} + \varepsilon_{h,t}, \quad (2.8)$$

$$\ln a_{k,t} = \rho_k \ln a_{k,t-1} + \varepsilon_{k,t}, \quad (2.9)$$

where  $\rho_c$ ,  $\rho_h$ , and  $\rho_k$  are autoregressive parameters;  $\varepsilon_{c,t}$ ,  $\varepsilon_{h,t}$ , and  $\varepsilon_{k,t}$  are i.i.d. innovations with mean

zero and variances  $\sigma_c^2$ ,  $\sigma_h^2$ , and  $\sigma_k^2$ .

The last term in the budget constraint,  $\Phi_t$ , stands for the capital adjustment cost which follows:

$$\Phi_t = \frac{\phi_{kc}}{2} \left( \frac{k_{c,t}}{k_{c,t-1}} - 1 \right)^2 \frac{k_{c,t-1}}{a_{k,t}} + \frac{\phi_{kh}}{2} \left( \frac{k_{h,t}}{k_{h,t-1}} - 1 \right)^2 k_{h,t-1}. \quad (2.10)$$

The parameters  $\beta_e$  and  $\epsilon_e$  in the utility function capture entrepreneurs' discount factor and habits in consumption;  $\omega$  in the production functions measures the income share of unconstrained households;  $\mu_c$ ,  $\mu_h$ ,  $\mu_b$ , and  $\mu_l$  are production function parameters;  $\phi_{kc}$  and  $\phi_{kh}$  are adjustment cost parameters;  $m_e$  is the loan-to-value (LTV) ratio.

**Households:** There is a continuum of measure one of agents in each of the unconstrained (u) and constrained (c) groups of households. Within each group  $i = \{u, c\}$ , a representative household maximizes:

$$V_i = E_0 \sum_{t=0}^{\infty} \beta_i^t z_t \left( \frac{1 - \epsilon_i}{1 - \beta_i \epsilon_i} \ln(c_{i,t} - \epsilon_i c_{i,t-1}) + j_t \ln h_{i,t} - \frac{\tau_t}{1 + \eta_i} \left( n c_{i,t}^{1+\xi_i} + n h_{i,t}^{1+\xi_i} \right)^{\frac{1+\eta_i}{1+\xi_i}} \right), \quad (2.11)$$

subject to the following budget constraint:

$$c_{i,t} + q_t(h_{i,t} - (1 - \delta)h_{i,t-1}) + \frac{R_{t-1}b_{i,t-1}}{\pi_t} = b_{i,t} + \frac{w c_{i,t} n c_{i,t}}{X_{wc,t}} + \frac{w h_{i,t} n h_{i,t}}{X_{wh,t}} + DIV_{i,t}, \quad (2.12)$$

where  $DIV$  stands for dividends obtained from retailers and labor unions.<sup>2</sup>

In above equations,  $h$  is the housing stock;  $j_t$  and  $\tau_t$  capture the housing preference shock and the labor supply shock which follow:

$$\ln \tau_t = \rho_\tau \ln \tau_{t-1} + \varepsilon_{\tau,t}, \quad (2.13)$$

$$\ln j_t = (1 - \rho_j) \ln j + \rho_j \ln j_{t-1} + \varepsilon_{j,t}, \quad (2.14)$$

---

<sup>2</sup>Dividends take the following form:

$$DIV_{u,t} = \frac{X_t - 1}{X_t} Y_t + \frac{X_{wc,t} - 1}{X_{wc,t}} w c_{u,t} n c_{u,t} + \frac{X_{wh,t} - 1}{X_{wh,t}} w h_{u,t} n h_{u,t},$$

$$DIV_{c,t} = \frac{X_{wc,t} - 1}{X_{wc,t}} w c_{c,t} n c_{c,t} + \frac{X_{wh,t} - 1}{X_{wh,t}} w h_{c,t} n h_{c,t},$$

where we assume that retail businesses are owned by unconstrained households.

where  $\rho_\tau$  and  $\rho_j$  are autoregressive parameters;  $\varepsilon_{\tau,t}$  and  $\varepsilon_{j,t}$  are i.i.d. innovations with mean zero and variances  $\sigma_\tau^2$  and  $\sigma_j^2$ ;  $j$  is the steady-state value of the housing preference shock;  $X_{wc}$  and  $X_{wh}$  are wage markups charged by labor unions.

In addition, constrained households face a borrowing constraint which states that their borrowing cannot exceed a fraction of the present value of their housing stock:

$$b_{c,t} \leq m_c E_t \left( \frac{(1-\delta)q_{t+1}h_{c,t}\pi_{t+1}}{R_t} \right), \quad (2.15)$$

where  $m_c$  is the LTV ratio associated with constrained households. This parameter affects the size of the spillover effects of the housing market to the broader economy.

**Nominal Rigidities:** The model allows for sticky price in the domestic consumption sector and sticky wages in both sectors. Price stickiness is introduced through assumptions of monopolistic competition at the retail level, implicit costs of adjusting nominal prices following [Calvo \(1983\)](#) contracts, and partial indexation to lagged inflation of those prices that cannot be re-optimized. The resulting Phillips curve for domestically produced goods is:<sup>3</sup>

$$\ln \pi_{H,t} - \iota_\pi \ln \pi_{H,t-1} = \beta_u (E_t \ln \pi_{H,t+1} - \iota_\pi \ln \pi_{H,t}) - \frac{(1-\theta_\pi)(1-\beta_u\theta_\pi)}{\theta_\pi} \ln \left( \frac{X_t}{X} \right) + \epsilon_{\pi,t}, \quad (2.16)$$

where  $\pi_{H,t} = p_{H,t}/p_{H,t-1}$  is the gross price inflation of domestically produced goods;  $X_t$  is the markup charged by retailers with a steady-state value of  $X$ ;  $\theta_\pi$  is the fraction of prices that cannot re-optimize in each period and  $\iota_\pi$  is the elasticity of price indexation. The term  $\epsilon_{\pi,t}$  is an i.i.d. cost push shock with zero mean and standard deviation  $\sigma_\pi$ .

Similarly, we have the following wage Phillips curves for each pair of households and sector:

$$\ln \omega_{c,i,t} - \iota_{wc} \ln \pi_{t-1} = \beta_i (E_t \ln \omega_{c,i,t+1} - \iota_{wc} \ln \pi_t) - \frac{(1-\theta_{wc})(1-\beta_i\theta_{wc})}{\theta_{wc}} \ln \left( \frac{X_{wc,t}}{X_{wc}} \right), \quad (2.17)$$

$$\ln \omega_{h,i,t} - \iota_{wh} \ln \pi_{t-1} = \beta_i (E_t \ln \omega_{h,i,t+1} - \iota_{wh} \ln \pi_t) - \frac{(1-\theta_{wh})(1-\beta_i\theta_{wh})}{\theta_{wh}} \ln \left( \frac{X_{wh,t}}{X_{wh}} \right), \quad (2.18)$$

---

<sup>3</sup>A detailed derivation of the Phillips curve can be found in [Smets and Wouters \(2003\)](#).



for  $i \in \{u, c\}$ , with  $\omega c_{i,t}$  and  $\omega h_{i,t}$  nominal wage inflations, that is  $\omega c_{i,t} = \pi_t \omega c_{i,t} / \omega c_{i,t-1}$  and  $\omega h_{i,t} = \pi_t \omega h_{i,t} / \omega h_{i,t-1}$ . The parameters  $\theta_{wc}$  and  $\theta_{wh}$  capture the fractions of wage contracts that cannot re-optimize in each period;  $\iota_{wc}$  and  $\iota_{wh}$  are the elasticities of wage indexation.

**Identities:** We define the effective terms of trade as:

$$S_t = \frac{P_{F,t}}{P_{H,t}}, \quad (2.19)$$

where  $P_{H,t}$  is the price of domestically produced goods and  $P_{F,t}$  is the price of imported goods expressed in domestic currency. They relate to the CPI according to:

$$P_t \equiv \left[ (1 - \alpha) P_{H,t}^{1-\eta} + \alpha P_{F,t}^{1-\eta} \right]^{\frac{1}{1-\eta}}, \quad (2.20)$$

where  $\alpha$  corresponds to the share of domestic consumption allocated to imported goods (or an index of openness) and  $\eta$  measures the substitutability between domestic and foreign goods.<sup>4</sup> Log-linearization of the CPI formula around a symmetric steady state satisfying the purchasing power parity (PPP) condition  $P_{H,t} = P_{F,t}$  yields:

$$\begin{aligned} \ln P_t &= (1 - \alpha) \ln P_{H,t} + \alpha \ln P_{F,t}, \\ &= \ln P_{H,t} + \alpha \ln S_t. \end{aligned} \quad (2.21)$$

It follows that domestic inflation and CPI inflation are linked according to:

$$\ln \pi_t = \ln \pi_{H,t} + \alpha \Delta \ln S_t, \quad (2.22)$$

which makes the gap between the two measures of inflation proportional to the percent change in

---

<sup>4</sup>According to the definition of openness, the optimal allocation of expenditures between domestic and imported goods is given by:

$$\begin{aligned} C_{H,t} &= (1 - \alpha) \left( \frac{P_{H,t}}{P_t} \right)^{-\eta} C_t, \\ C_{F,t} &= \alpha \left( \frac{P_{F,t}}{P_t} \right)^{-\eta} C_t, \end{aligned}$$

where  $C_{H,t}$  and  $C_{F,t}$  are consumption of domestic goods and consumption of imported goods.

the effective terms of trade, with the coefficient of proportionality given by the index of openness  $\alpha$ .

We assume that the law of one price holds:

$$\ln P_{F,t} = \ln \xi_t + \ln P_t^*, \quad (2.23)$$

where  $\ln \xi_t$  is the log nominal exchange rate and  $\ln P_t^*$  is foreign price index. Combining this result with the definition of the terms of trade, we obtain:

$$\ln S_t = \ln \xi_t + \ln P_t^* - \ln P_{H,t}, \quad (2.24)$$

which implies:

$$\Delta \ln S_t = \Delta \ln \xi_t + \ln \pi_t^* - \ln \pi_{H,t}, \quad (2.25)$$

where  $\pi_t^* = P_t^* / P_{t-1}^*$  is foreign gross price inflation.

The uncovered interest parity (UIP) implies:

$$\ln R_t - \ln R_t^* = E_t(\Delta \ln \xi_{t+1}) + rp_t, \quad (2.26)$$

where  $rp_t$  is usually interpreted as a risk premium.<sup>5</sup> The risk premium is modeled as an AR(1) process:

$$rp_t = \rho_{rp} rp_{t-1} + \varepsilon_{rp,t}, \quad (2.27)$$

where  $\rho_{rp}$  is the autoregressive parameter and  $\varepsilon_{rp,t}$  is an i.i.d. shock to the risk premium with mean zero and variance  $\sigma_{rp}^2$ .

In the UIP, the change in exchange rate is forward looking. This forward looking feature causes indeterminacy that the number of expectational variables is larger than the number of unstable

---

<sup>5</sup>The hypothesis that interest rate differentials are unbiased predictors of future exchange rate movements has been almost universally rejected in empirical studies. Actually the UIP is likely to explain only a very small proportion of variation in exchange rates. In this paper, the risk premium shock explains about 30% of the variation in the exchange rate.

roots of the system. To solve and estimate this indeterminate DSGE model, we adopt the method proposed by [Farmer et al. \(2015\)](#). The idea of this method is to treat a subset of the non-fundamental errors as newly defined fundamentals. Specifically, we define an expectational sunspot shock  $\varepsilon_{de,t}$  which captures the rational expectation forecast error:

$$\varepsilon_{de,t} = \Delta \ln \xi_t - E_{t-1}(\Delta \ln \xi_t), \quad (2.28)$$

where  $\varepsilon_{de,t}$  has mean zero and variance  $\sigma_{de}^2$ . Then we define a new variable  $dess_t \equiv E_t(\Delta \ln \xi_{t+1})$  so that it can be linked to  $\Delta \ln \xi_t$  via the sunspot shock according to:

$$\Delta \ln \xi_t - dess_{t-1} = \varepsilon_{de,t}. \quad (2.29)$$

This newly defined variable  $dess_t$  is included in the model as one of the endogenous variables.

**Monetary Policy:** The central bank is assumed to set the interest rate  $R_t$  according to a Taylor rule that responds gradually to inflation and GDP growth. We also allow for the possibility for the interest rate to respond to house price growth. The behavior of the monetary authority is described by:

$$\begin{aligned} \ln \left( \frac{R_t}{\bar{R}} \right) = & \gamma_R \ln \left( \frac{R_{t-1}}{\bar{R}} \right) + (1 - \gamma_R) \gamma_\pi \ln \left( \frac{\pi_t}{\bar{\pi}} \right) + (1 - \gamma_R) \gamma_Y \ln \left( \frac{GDP_t}{GDP_{t-1}} \right) \\ & + (1 - \gamma_R) \gamma_Q \ln \left( \frac{q_t}{q_{t-1}} \right) + \varepsilon_{R,t}, \end{aligned} \quad (2.30)$$

where  $\bar{R}$  and  $\bar{\pi}$  are the steady-state interest rate and the inflation target, and  $\varepsilon_{R,t}$  is an i.i.d. monetary policy shock with mean zero and variance  $\sigma_R^2$ . Real GDP is domestic output  $Y_t$  plus the real value of housing investment  $\bar{q}IH_t$ :

$$GDP_t = Y_t + \bar{q}IH_t, \quad (2.31)$$

where  $\bar{q}$  denotes the steady-state real house price.

**Market Clearing:** The market clearing conditions are:

$$C_t + IK_{c,t}/a_{k,t} + IK_{h,t} + k_{b,t} + \Phi_t + NX_t = Y_t, \quad (2.32)$$

$$(h_{u,t} - (1 - \delta)h_{u,t-1}) + (h_{c,t} - (1 - \delta)h_{c,t-1}) = IH_t, \quad (2.33)$$

$$b_{u,t} + b_{c,t} + b_{e,t} = 0, \quad (2.34)$$

where  $C_t = c_{u,t} + c_{c,t} + c_{e,t}$ ,  $IK_{c,t} = (k_{c,t} - (1 - \delta_{kc})k_{c,t-1})/a_{k,t}$ ,  $IK_{h,t} = k_{h,t} - (1 - \delta_{kh})k_{h,t-1}$ ,  $k_{b,t}$  is the intermediate inputs in the housing sector,  $\Phi_t$  is the capital adjustment cost, and  $NX_t$  stands for net exports.

**Foreign Economy:** We use the simple three-equation model with aggregate supply (AS), aggregate demand (IS), and monetary policy (MP) to characterize foreign economy (denoted with an asterisk):

$$\ln \pi_t^* = \delta E_t \ln \pi_{t+1}^* + (1 - \delta) \ln \pi_{t-1}^* + \kappa \Delta y_t^* + \varepsilon_{AS,t}^*, \quad (2.35)$$

$$\Delta y_t^* = \mu E_t \ln \Delta y_{t+1}^* + (1 - \mu) \Delta y_{t-1}^* - \phi \left( \ln \left( \frac{R_t^*}{\bar{R}^*} \right) - E_t \ln \left( \frac{\pi_{t+1}^*}{\bar{\pi}^*} \right) \right) + \varepsilon_{IS,t}^*, \quad (2.36)$$

$$\ln \left( \frac{R_t^*}{\bar{R}^*} \right) = \gamma_R^* \ln \left( \frac{R_{t-1}^*}{\bar{R}^*} \right) + (1 - \gamma_R^*) \gamma_\pi^* \ln \left( \frac{\pi_t^*}{\bar{\pi}^*} \right) + (1 - \gamma_R^*) \gamma_Y^* \Delta y_t^* + \varepsilon_{MP,t}^*, \quad (2.37)$$

where  $\pi_t^*$  is foreign gross inflation,  $\Delta y_t^*$  is foreign output growth, and  $R_t^*$  is foreign nominal gross returns of riskless loans. The terms  $\varepsilon_{AS,t}^*$ ,  $\varepsilon_{IS,t}^*$ , and  $\varepsilon_{MP,t}^*$  are AS, IS, and MP i.i.d. shocks with mean zero and variances  $\sigma_{AS}^2$ ,  $\sigma_{IS}^2$ , and  $\sigma_{MP}^2$ .

## 3 Empirical Results

### 3.1 Data Description

We use quarterly data ranging from the first quarter of 1971 to the third quarter of 2015. Note that the start and end-points of the sample are not only driven by data availability at the time of writing the paper, but also to take into account the fact that South Africa moved to a flexible exchange rate regime since 1970. The dataset includes per-capita real consumption, per-capita

real business investment, per-capita real housing investment, real house price, CPI inflation rate, nominal interest rate, nominal wage inflation rates in the consumption and housing sectors, nominal exchange rate between the South African Rand and the US Dollar, as well as US real GDP, inflation, and nominal interest rate. Most of the South African variables have been obtained from the the South African Reserve Bank database, the exceptions being CPI, nominal interest rate and the house price index. The first two data were sourced from International Financial Statistics database of the International Monetary Fund, with ABSA - a leading private bank of the country, providing the house price index. While, data for the US economy is obtained from the FRED database of the Federal Reserve Bank of St. Louis.

### 3.2 Calibration

Table 1 summarizes our calibrated parameters. We calibrate the discount factor of unconstrained households  $\beta_u = 0.9975$  to match the average real interest rate over the sample and set the discount factors of entrepreneurs and constrained households at  $(\beta_e, \beta_c) = (0.9875, 0.96)$  so that they both have enough incentive to borrow the maximum amounts they qualify. We set the LTV ratios at  $(m_e, m_c) = (0.1, 0.45)$ , the steady-state value of housing preference shock at  $j = 0.2$ , the depreciation rates at  $(\delta, \delta_{kc}, \delta_{kh}) = (0.01, 0.04, 0.04)$ , and the production function parameters at  $(\mu_c, \mu_h, \mu_b, \mu_l) = (0.3, 0.1, 0.1, 0.1)$ . The openness index parameter  $\alpha$  is set to 30% to match the share of South African imports in GDP. We choose a widely used value 1.15 for the price and wage markups  $X$ ,  $X_{wc}$ , and  $X_{wh}$ . These values, together with the estimated parameters, help pin down the steady-state loan-to-GDP ratios for constrained households and entrepreneurs.

Table 1: Calibrated Parameters

Parameter	Value	Parameter	Value	Parameter	Value
$\beta$	0.9875	$\mu_l$	0.10	$m_e$	0.10
$\beta'$	0.9975	$j$	0.20	$m_c$	0.45
$\beta''$	0.96	$\delta$	0.01	$X$	1.15
$\mu_c$	0.30	$\delta_{kc}$	0.04	$X_{wc}$	1.15
$\mu_h$	0.10	$\delta_{kh}$	0.04	$X_{wh}$	1.15
$\mu_b$	0.10	$\alpha$	0.30		

### 3.3 Estimation

The left panels of Tables 2 and 3 present the prior distributions of structural parameters and shock processes. Overall, they are broadly consistent with previous studies, e.g., [Lubik and Schorfheide \(2004\)](#), [Iacoviello and Neri \(2010\)](#), and [Baele et al. \(2015\)](#).

Table 2: Prior and Posterior Distribution of the Structural Parameters

Parameter	Prior Distribution			Posterior Distribution			
	Distribution	Mean	SD	Mean	5%	Median	95%
$\epsilon_e$	Beta	0.500	0.075	0.5060	0.3517	0.4952	0.6674
$\epsilon_u$	Beta	0.500	0.075	0.4425	0.3167	0.4396	0.5665
$\epsilon_c$	Beta	0.500	0.075	0.5773	0.4235	0.5795	0.7676
$\eta_u$	Gamma	0.500	0.100	0.5040	0.3363	0.4990	0.6604
$\eta_c$	Gamma	0.500	0.100	0.5007	0.3198	0.4917	0.6913
$\xi_u$	Normal	1.000	0.100	0.5635	0.3874	0.5531	0.7310
$\xi_c$	Normal	1.000	0.100	0.9353	0.7673	0.9319	1.1090
$\omega$	Beta	0.650	0.050	0.7349	0.6619	0.7380	0.7969
$\theta_\pi$	Beta	0.667	0.050	0.7366	0.6895	0.7384	0.7771
$\theta_{wc}$	Beta	0.667	0.050	0.8747	0.8492	0.8752	0.9037
$\theta_{wh}$	Beta	0.667	0.050	0.7893	0.7215	0.7931	0.8552
$\iota_\pi$	Beta	0.500	0.200	0.0662	0.0092	0.0583	0.1248
$\iota_{wc}$	Beta	0.500	0.200	0.1301	0.0261	0.1180	0.2304
$\iota_{wh}$	Beta	0.500	0.200	0.1824	0.0430	0.1770	0.3045
$\phi_{kc}$	Gamma	10.000	2.500	7.1837	4.5163	7.1200	9.9559
$\phi_{kh}$	Gamma	10.000	2.500	9.2792	5.3039	8.9727	12.8815
$\gamma_R$	Beta	0.750	0.100	0.6568	0.6099	0.6573	0.7085
$\gamma_Y$	Normal	0.000	0.100	0.3813	0.2860	0.3854	0.4891
$\gamma_Q$	Normal	0.000	0.100	0.5836	0.4461	0.5738	0.7097
$\gamma_\pi$	Normal	1.500	0.100	1.3787	1.2840	1.3800	1.4868
$\delta$	Beta	0.400	0.100	0.0898	0.0445	0.0882	0.1339
$\kappa$	Normal	0.100	0.100	0.2231	0.1268	0.2220	0.3070
$\mu$	Beta	0.700	0.100	0.9007	0.8570	0.9020	0.9579
$\phi$	Normal	0.100	0.100	0.0282	0.0036	0.0252	0.0554
$\gamma_R^*$	Beta	0.750	0.100	0.8353	0.7721	0.8363	0.9060
$\gamma_Y^*$	Normal	0.000	0.100	0.0989	0.0007	0.0847	0.1989
$\gamma_\pi^*$	Normal	1.500	0.100	1.5095	1.3521	1.5107	1.6515

The posterior distributions are presented in the right panels. The labor income share of credit-unconstrained households  $\omega$  is estimated to be 73.49%. This value implies that about one fourth of South African households are subject to a collateral constraint. The domestic monetary policy parameter estimates suggest that nominal interest rate is considerably persistent and it actively responds to inflation. The response of interest rate to GDP growth is also considerably significant.

More interestingly, the domestic monetary policy is found to be reacting to house price growth too, while this reaction cannot be detected in the US monetary policy (see [Sun and Tsang \(2014\)](#)). Foreign interest rate is relatively more persistent and more responsive to inflation but less responsive to GDP growth.<sup>6</sup> All AR(1) shock processes are highly persistent.

Table 3: Prior and Posterior Distribution of the Shock Processes

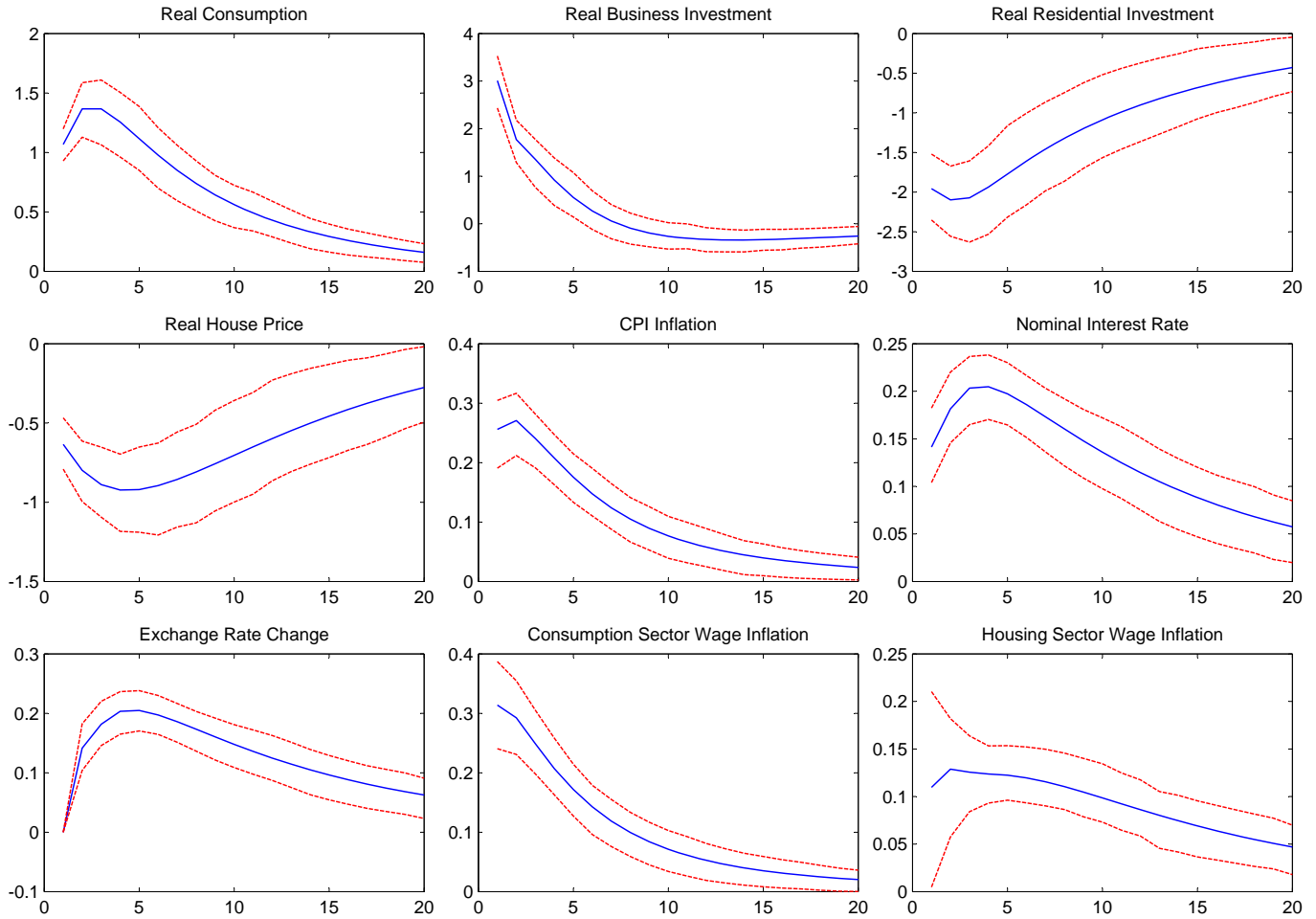
Parameter	Prior Distribution			Posterior Distribution			
	Distribution	Mean	SD	Mean	5%	Median	95%
$\rho_c$	Beta	0.800	0.100	0.9678	0.9445	0.9702	0.9925
$\rho_h$	Beta	0.800	0.100	0.9915	0.9841	0.9927	0.9990
$\rho_k$	Beta	0.800	0.100	0.9510	0.8927	0.9635	0.9969
$\rho_j$	Beta	0.800	0.100	0.9674	0.9512	0.9678	0.9865
$\rho_\tau$	Beta	0.800	0.100	0.8387	0.7460	0.8442	0.9527
$\rho_z$	Beta	0.800	0.100	0.9076	0.8630	0.9122	0.9418
$\rho_{rp}$	Beta	0.800	0.100	0.8554	0.7697	0.8579	0.9487
$\sigma_c$	Inv. Gamma	0.100	2.000	0.0282	0.0246	0.0281	0.0315
$\sigma_h$	Inv. Gamma	0.100	2.000	0.0237	0.0215	0.0236	0.0260
$\sigma_k$	Inv. Gamma	0.100	2.000	0.0166	0.0134	0.0164	0.0194
$\sigma_j$	Inv. Gamma	0.100	2.000	0.0838	0.0617	0.0830	0.1040
$\sigma_\tau$	Inv. Gamma	0.100	2.000	0.0373	0.0253	0.0371	0.0490
$\sigma_z$	Inv. Gamma	0.100	2.000	0.0325	0.0264	0.0324	0.0378
$\sigma_r$	Inv. Gamma	0.100	2.000	0.0096	0.0085	0.0095	0.0108
$\sigma_\pi$	Inv. Gamma	0.100	2.000	0.0339	0.0296	0.0338	0.0379
$\sigma_{AS}$	Inv. Gamma	0.100	2.000	0.0080	0.0072	0.0080	0.0086
$\sigma_{IS}$	Inv. Gamma	0.100	2.000	0.0094	0.0083	0.0094	0.0103
$\sigma_{MP}$	Inv. Gamma	0.100	2.000	0.0064	0.0058	0.0064	0.0069
$\sigma_{rp}$	Inv. Gamma	0.100	2.000	0.0251	0.0199	0.0250	0.0302
$\sigma_{wc}$	Inv. Gamma	0.100	2.000	0.0106	0.0094	0.0106	0.0116
$\sigma_{wh}$	Inv. Gamma	0.100	2.000	0.0166	0.0147	0.0164	0.0186
$\sigma_{de}$	Inv. Gamma	0.100	2.000	0.0561	0.0492	0.0561	0.0623

### 3.4 Impulse Response Analysis

We plot the impulses of nine domestic observables – real consumption, real business investment, real residential investment, real house price, CPI inflation, nominal interest rate, exchange rate change, and wage inflations in the consumption and the housing sectors – to the intertemporal preference, housing preference, housing technology, and monetary policy shocks as wells as foreign monetary policy shock.

<sup>6</sup>The US nominal interest rate has been around the zero lower bound since the last quarter of 2008, hence the simple Taylor rule estimation might not be accurate. However, the US economy is not of the primary interest of this paper.

Figure 1 shows that the intertemporal preference shock plays an important role in domestic economy. When economic agents become less patient, they increase current consumption. Entrepreneurs invest more in the consumption sector but less in the housing sector. Real house price drops but CPI inflation rises. The central bank responds to the rise in CPI inflation by raising nominal interest rate. According to the UIP, domestic currency is expected to depreciate and the exchange rate increases since the next period.



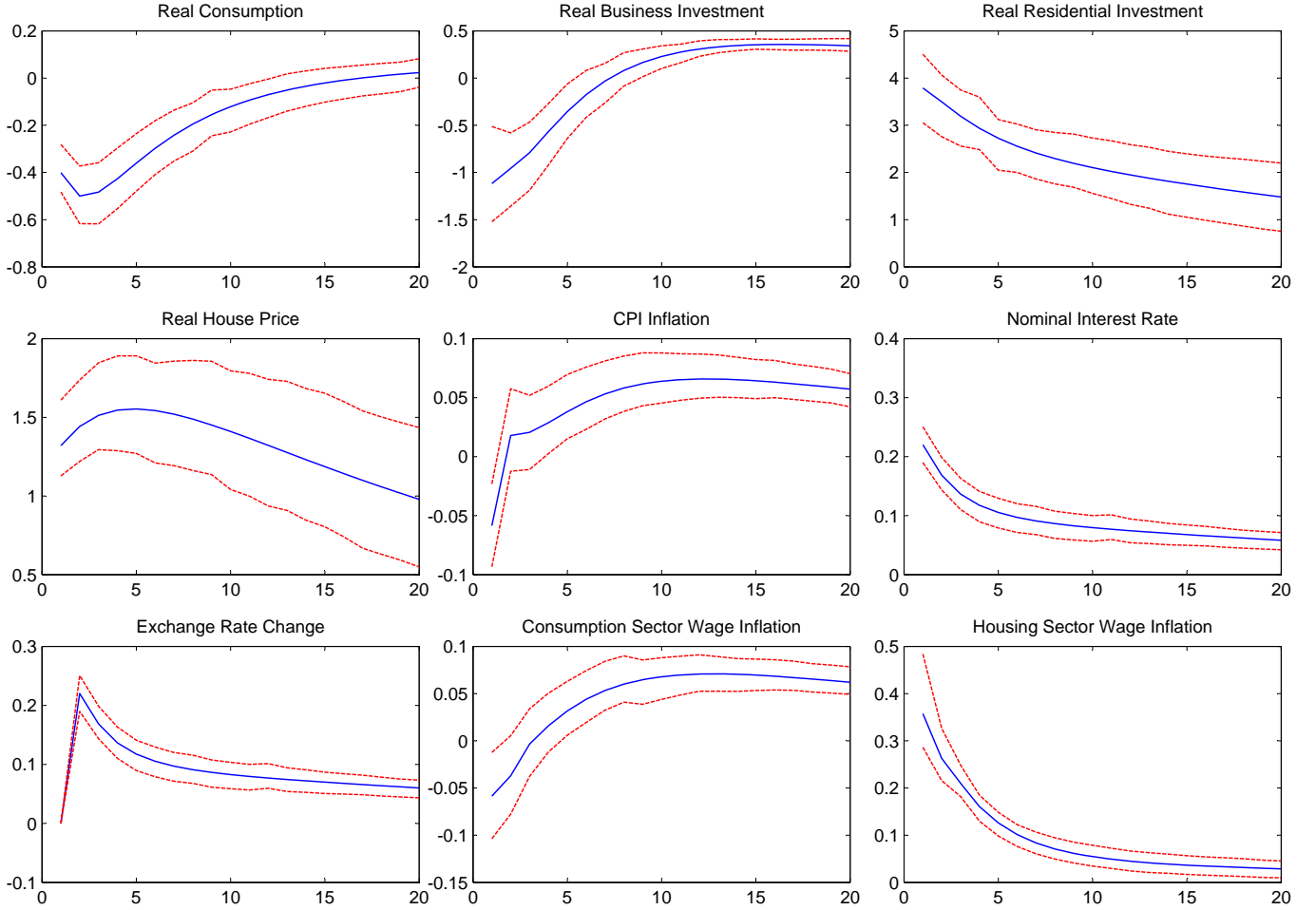
Note: The y-axis measures the percent deviation from the steady state.

Figure 1: Impulse Responses to a One Standard-Error Intertemporal Preference Shock

Figure 2 depicts the impulse responses to the housing preference shock which has a significant impact on housing investment and real house price. When households have a stronger preference over housing relative to consumption, they choose to consume less and hence real consumption decreases. Therefore investment in the consumption sector also goes down. The impact on CPI



inflation is limited. The central bank slightly raises nominal interest rate as a response to house price growth. Domestic currency starts to depreciate since one period later. While the housing preference shock heavily influences the wage inflation in the housing sector, it does not affect consumption sector wage inflation much.

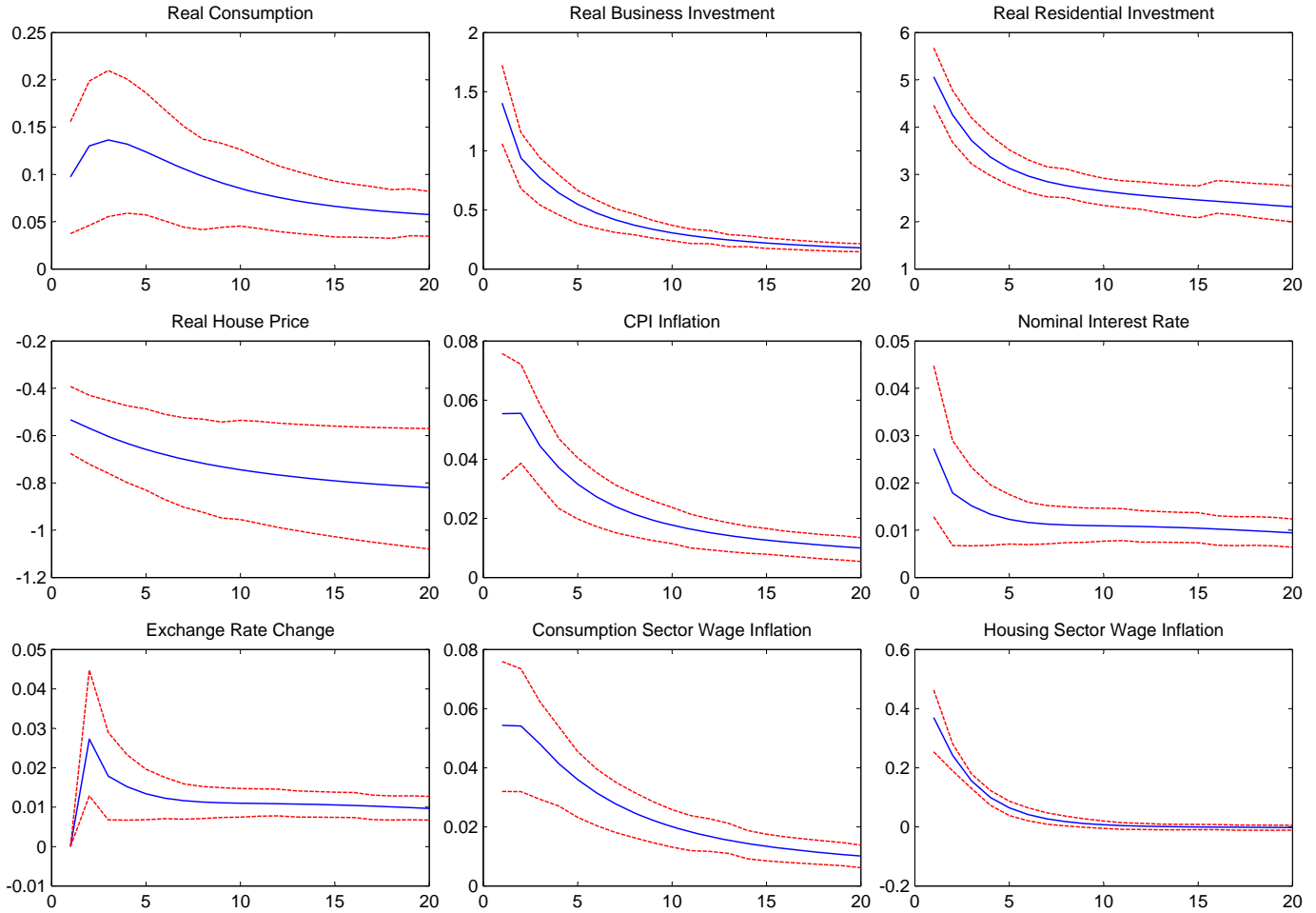


Note: The y-axis measures the percent deviation from the steady state.

Figure 2: Impulse Responses to a One Standard-Error Housing Preference Shock

As shown in Figure 3, the housing technology shock stimulates entrepreneurs' investment in the housing market and brings real house price down for a long time though the drop in house price is only mild. The impact of the housing technology shock on consumption and CPI inflation is limited. The central bank is supposed to adjust nominal interest rate in two directions as a response to the increase in all components of domestic aggregate demand and the decrease in real house price. The net effect is positive but almost negligible. Domestic currency slightly depreciates since one period

later. While the housing technology shock does not affect wage inflation in the consumption sector, its impact on housing sector wage inflation is significant. So, the spillover results based on the impulse response analysis is in line with the atheoretical literature on South Africa discussed in the introduction.

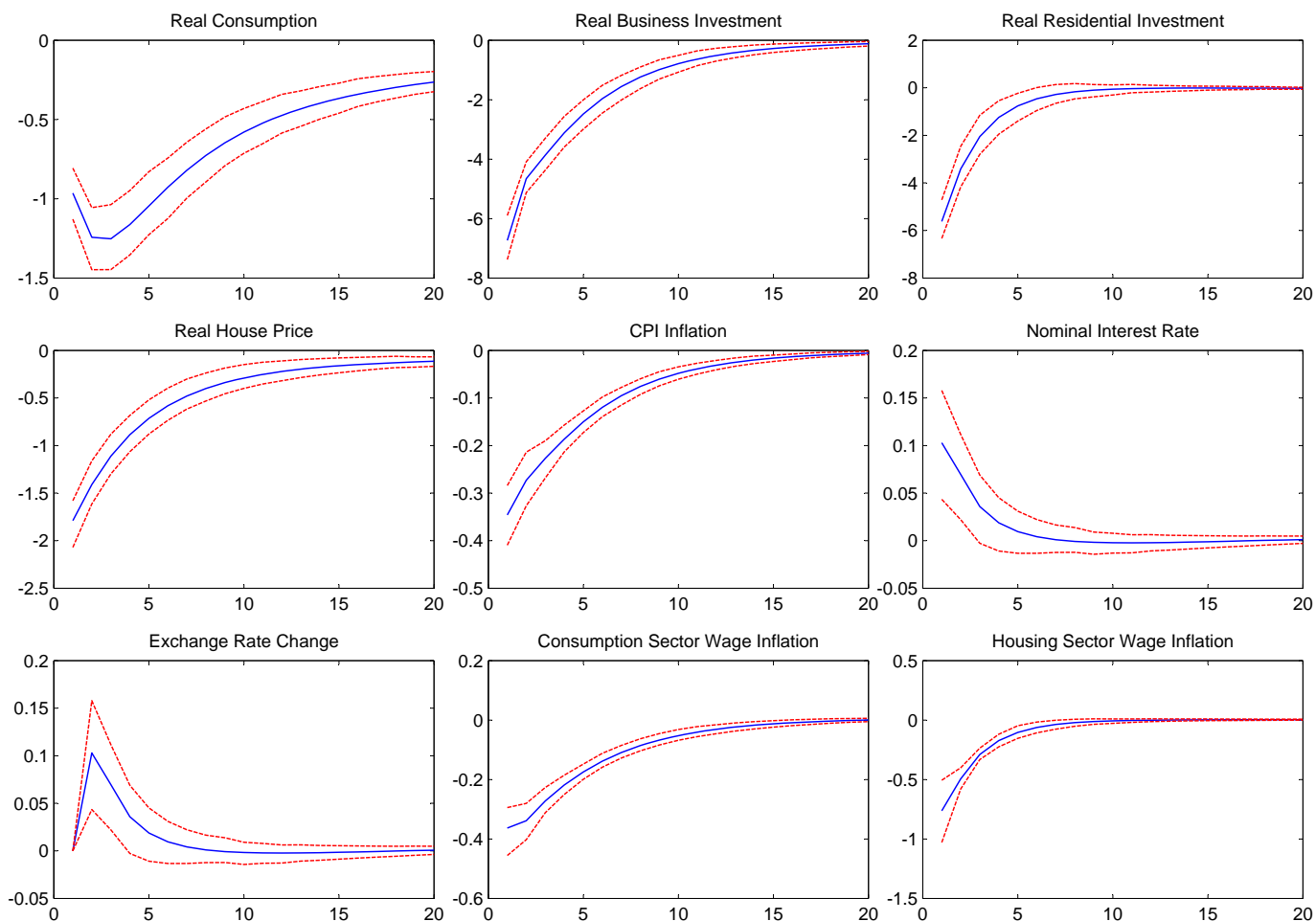


Note: The y-axis measures the percent deviation from the steady state.

Figure 3: Impulse Responses to a One Standard-Error Housing Technology Shock

Figure 4 indicates that the monetary policy shock affects the real economy to a large extent. Following a contractionary monetary policy shock, both business investment and housing investment drop by more than 5%, real consumption drops by almost 1%. The impact on business and housing investment diminishes within a year and the impact on consumption lasts longer. CPI inflation decreases, so does wage inflation in both sectors. Due to the higher gross return, domestic currency is expected to depreciate since the next period. The negative impact on house prices following

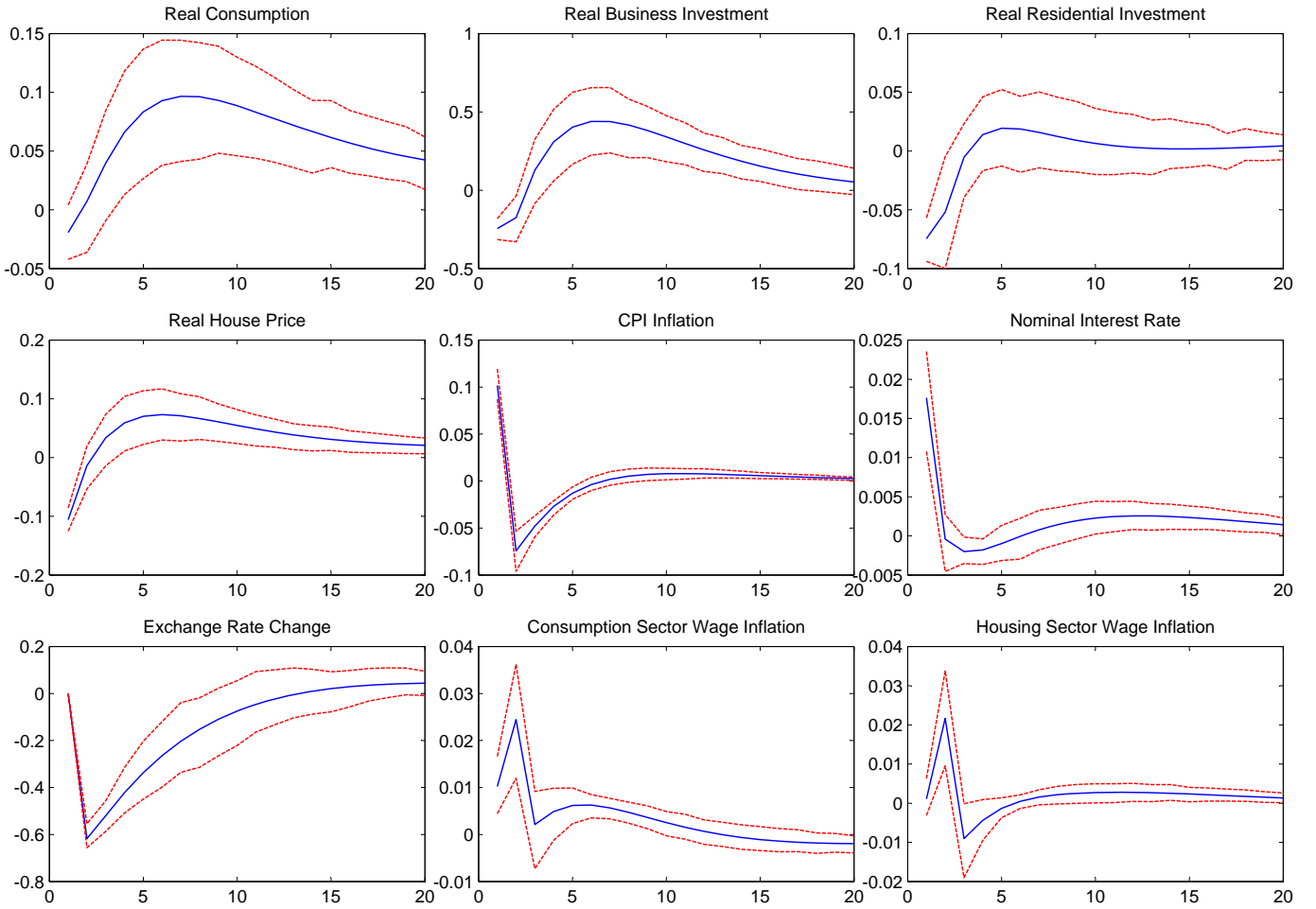
a monetary policy shock is in line with the VAR literature (see for example [Gupta et al. \(2010\)](#), [Ndahiriwe and Gupta \(2010\)](#), [Simo-Kengne et al. \(2013b\)](#), and [Simo-Kengne et al. \(2014\)](#)).



Note: The y-axis measures the percent deviation from the steady state.

Figure 4: Impulse Responses to a One Standard-Error Monetary Policy Shock

Figure 5 shows the impact of the foreign monetary policy shock on domestic economy. Overall, the impact is limited. When foreign goods become more expensive, domestic consumers reduce their consumption. While all components of aggregate demand shrink, CPI inflation increases due to the higher price of imported goods. The central bank slightly raises nominal interest rate as a response to CPI inflation. However, since foreign interest rate increases dramatically after a monetary policy shock, domestic currency starts to appreciate since one period later.



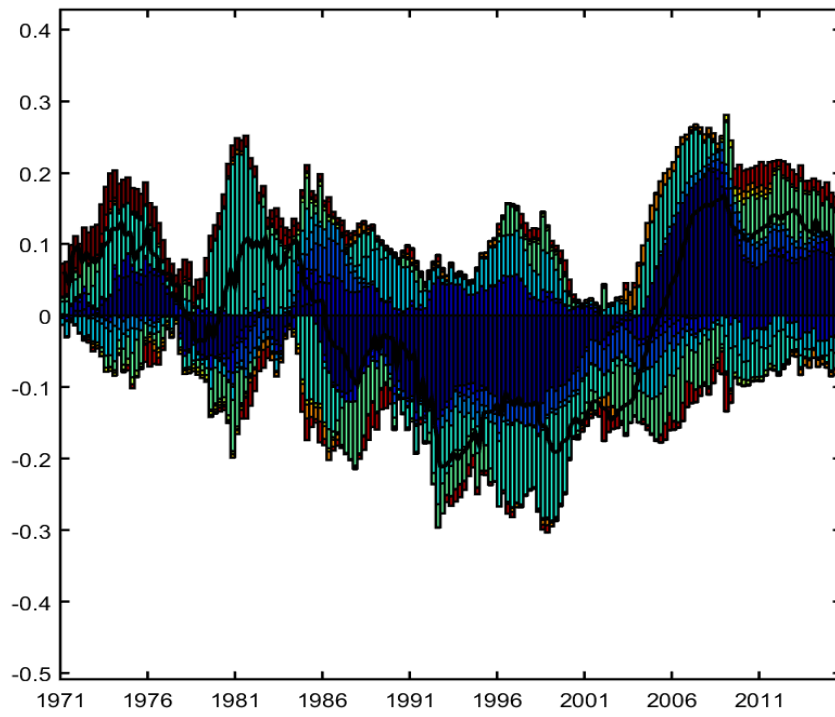
Note: The y-axis measures the percent deviation from the steady state.

Figure 5: Impulse Responses to a One Standard-Error Foreign Monetary Policy Shock

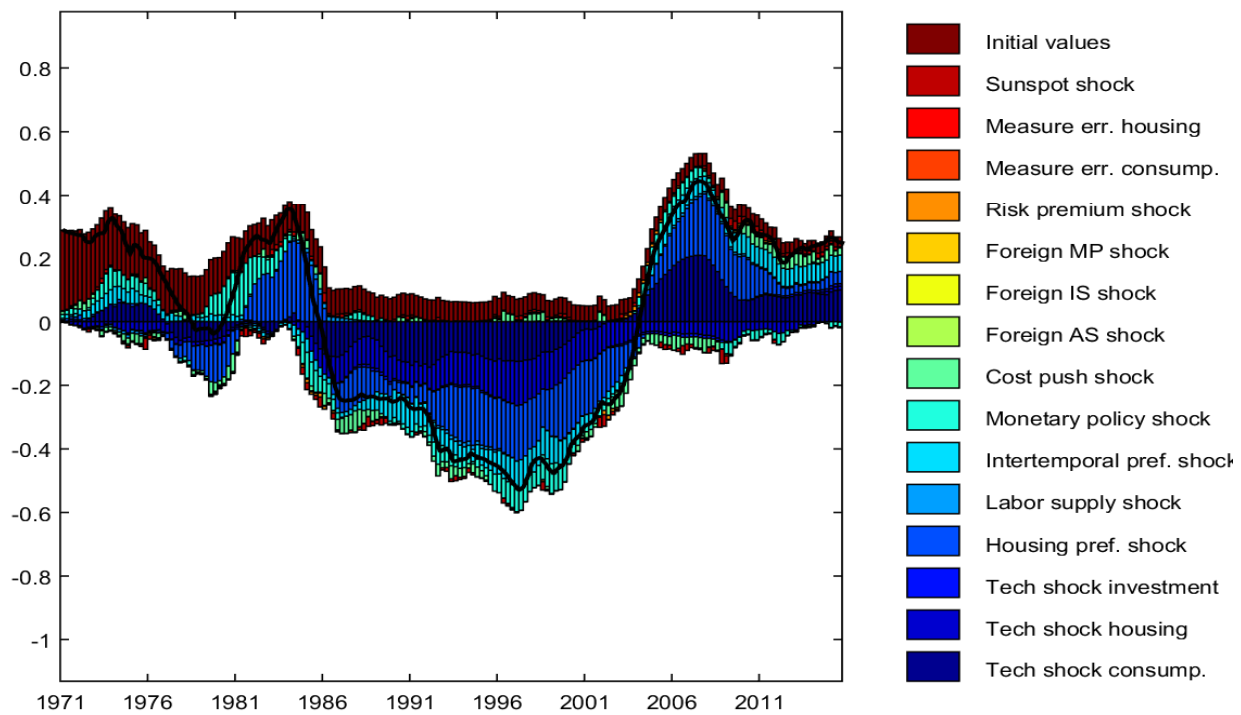
### 3.5 What Shocks Drive the Macroeconomy and the Housing Market?

To understand the relative importance of structural shocks in explaining the dynamics of the macroeconomy and the housing market fluctuations, we conduct a historical shock decomposition for real GDP and real house price in Figure 6. Since consumption accounts for the majority of aggregate demand, the technology shock in the consumption sector ( $\varepsilon_c$ ) becomes the leading driving force of the dynamics of real GDP. The monetary policy shock ( $\varepsilon_r$ ) also contributes significantly around 1980 and in the second half of the 1990s. Most of the fluctuations of house price are driven by the housing preference shock ( $\varepsilon_j$ ) and the technology shock in the consumption sector ( $\varepsilon_c$ ). The monetary policy shock ( $\varepsilon_r$ ) and the technology shock in the housing sector ( $\varepsilon_h$ ) also contribute to

house price fluctuations, but to a lesser extent.



(a) Real GDP



(b) Real House Price

Note: The solid lines plot model variables, expressed in percentage deviation from their steady-state values. The bars show the contributions of the estimated structural shocks.

Figure 6: Historical Decomposition of Key Variables

## 4 Economic Implications

### 4.1 Spillover Effects of the Housing Market

To quantify the spillover effects of the housing market to the broader economy, we run a bivariate regression of the percentage change in consumption on the lag percentage change in housing wealth (both data series are generated from the estimated model):

$$\Delta \ln C_t = \beta_0 + \beta_1 \Delta \ln HW_{t-1} + \varepsilon_t, \quad (4.1)$$

where  $HW_t = q_t(h_{u,t} + h_{c,t})$ . The coefficient  $\beta_1$  measures the elasticity of consumption to housing wealth. The spillover effects are reinforced by the degree of financial frictions, which depends on the LTV ratio ( $m_c$ ). We report the regression result for the baseline model in the first column of Table 4 and then we simulate a counterfactual model in the absence of collateral effects (by setting  $m_c$  to zero) and report the same regression result in the second column.

Table 4: Spillover Effects of the Housing Market

	(1) Baseline	(2) No Collateral Effects
Constant	0.0004 (0.0009)	0.0003 (0.0009)
$\Delta \ln HW_{t-1}$	0.1911 (0.0321)	0.1657 (0.0315)

Note: Standard errors are in parentheses.

The results in Table 4 suggest that the structural shocks in the model generate a positive correlation between consumption and previous period housing wealth even without collateral effects. A one percent increase in previous period housing wealth leads to about a 0.17% increase in consumption. In the presence of collateral effects, however, the positive correlation becomes even stronger. The comparison between columns (1) and (2) indicates that collateral effects strengthen the elasticity of consumption to housing wealth by 2.54 percentage points.

## 4.2 Welfare Analysis under Fixed Exchange Rate Policy

As we mentioned in the data section, South Africa moved to a flexible exchange rate regime since 1970. Given the estimated structural shocks, we conduct a counterfactual analysis to examine what would have happened if South Africa had adopted the fixed exchange rate policy over the entire sample period.<sup>7</sup> We assume that the risk premium shock does not play a role in the UIP so that South Africa simply follows the US monetary policy. As Figure 7 shows, consumption, business investment, and housing investment would have been higher during the two crises around 1982 and 2008 when the US central bank significantly lowered nominal interest rate to fight against the economic downturn. Real house price would have not been affected much. An apparent difference is that the South African economy would have been much more volatile if the country had given up using its own monetary policy but simply adopted the fixed exchange rate policy. Next, we move a step further to see how social welfare would have been affected by the fixed exchange rate policy.

We use an ordinary loss criterion (a weighted variability of money inflation and output growth) as in [Giannoni and Woodford \(2003\)](#) to measure social welfare from the stabilization point of view:

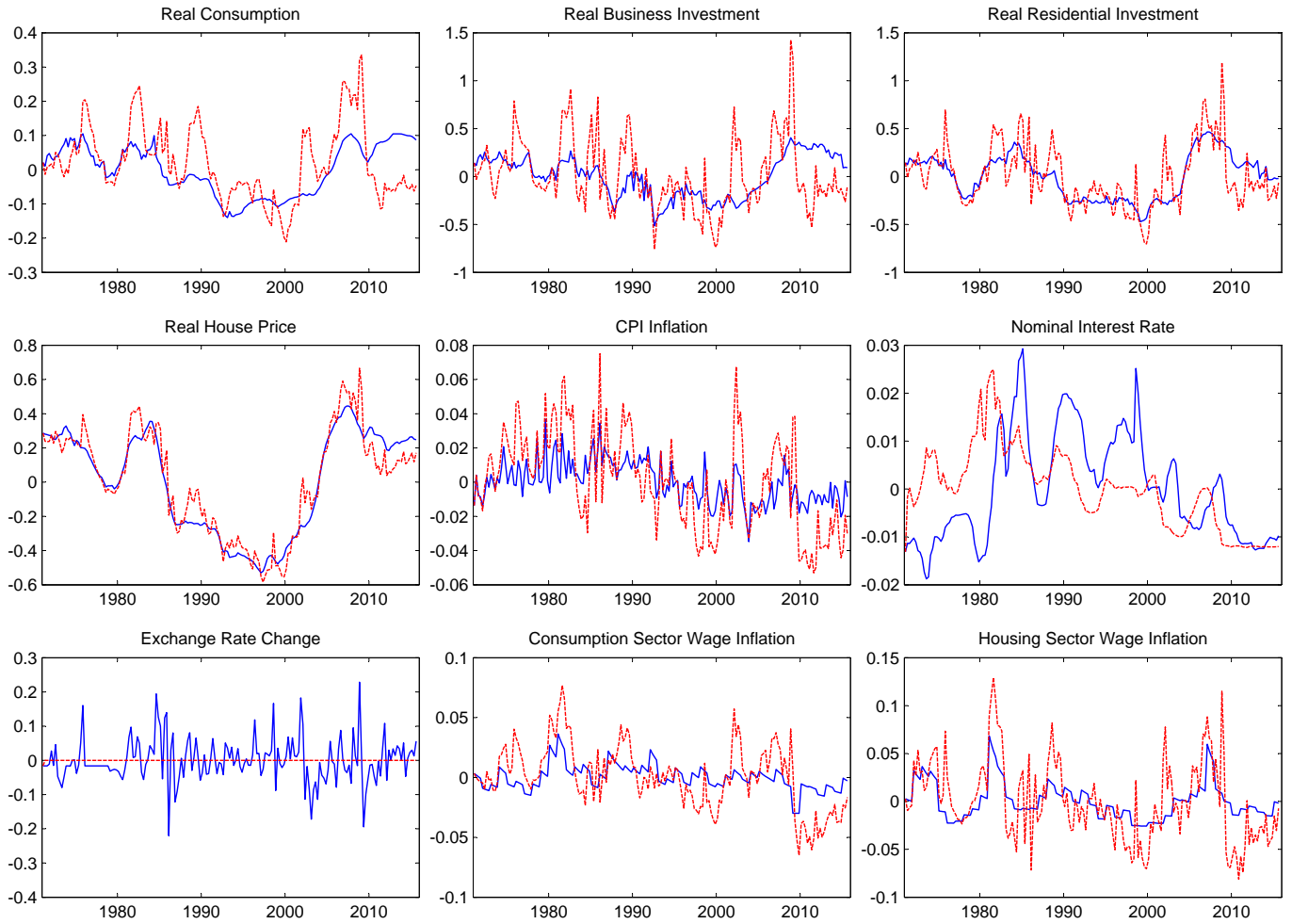
$$\mathcal{L} = var(\ln \pi_t - \iota_\pi \ln \pi_{t-1}) + \lambda_y var(\ln GDP_t - \ln GDP_{t-1}), \quad (4.2)$$

where  $\lambda_y$  is suggested to be 0.048.

According to this criterion, the loss in the baseline model case is  $1.54 * 10^{-4}$  and this value under the fixed exchange rate policy increases to  $11.41 * 10^{-4}$ . Such a comparison suggests that the overall economic stability of South Africa would have been worsen more than seven times if the fixed exchange rate policy had been adopted.

---

<sup>7</sup>For detailed expositions of stock and housing market spillovers in estimated DSGE models for the small open economy of Hong Kong operating under a fixed exchange rate regime, please refer to [Funke and Paetz \(2013\)](#) and [Funke et al. \(2011\)](#) respectively.



Note: The solid lines are observed data series and the dashed lines are counterfactual series under fixed exchange rate.

Figure 7: Counterfactual Analysis under Fixed Exchange Rate

## 5 Conclusion

The impact of house price on the real economy of South Africa has been quite extensively analyzed. Related to this, there are also studies that have looked into the role of monetary policy on the housing markets and, in turn, have also asked whether house price movements are accounted for by the SARB when formulating its monetary policy stance. However, this literature is based primarily on atheoretical small-scale models which are likely to suffer from misspecification due to omitted variable bias, making their results unreliable, over and above the fact, that these models are not immune to the [Lucas \(1976\)](#) critique. Given this, our paper, for the first time estimates a small-open



economy new Keynesian dynamic stochastic general equilibrium model (SOE-NKDSGE) with an explicit housing sector, in attempt to validate or invalidate the claims made by the existing econometric regression-based methods. Using quarterly data covering the period of 1971:Q1-2015:Q3, we draw the following inferences: (a) Over the business cycle, the housing preference shock and the technology shock in the consumption sector drive most of the fluctuations of real house price; (b) The spillover effects of the housing market to the boarder economy are not negligible; (c) The central bank of South Africa has actively responded to house price movements over the past 45 years; and (d) The flexible exchange rate policy has helped South Africa maintain the macroeconomic stability to a large extent.

## References

- André C, Bonga-Bonga L, Gupta R, Muteba Mwamba J. Forthcoming. The impact of economic policy uncertainty on US real housing returns and their volatility: A nonparametric approach. *Journal of Real Estate Research* .
- André C, Gupta R, Kanda P, et al. 2012. Do house prices impact consumption and interest rate?: Evidence from OECD countries using an agnostic identification procedure. *Applied Economics Quarterly* **58**: 19–70.
- Apergis N, Simo-Kengne B, Gupta R. 2014. The long-run relationship between consumption, house prices, and stock prices in South Africa: Evidence from provincial-level data. *Journal of Real Estate Literature* **22**: 83–99.
- Aye GC, Balcilar M, Bosch A, Gupta R. 2014. Housing and the business cycle in South Africa. *Journal of Policy Modeling* **36**: 471–491.
- Aye GC, Gupta R, Kaninda A, Nyakabawo W, Razak A. 2013. House price, stock price and consumption in South Africa: A structural VAR approach. *Corporate Ownership and Control* **10**: 585–90.
- Aye GC, Gupta R, Modise MP. 2015. Do stock prices impact consumption and interest rate in South Africa? evidence from a time-varying vector autoregressive model. *Journal of Emerging Market Finance* **14**: 176–196.
- Baele L, Bekaert G, Cho S, Inghelbrecht K, Moreno A. 2015. Macroeconomic regimes. *Journal of Monetary Economics* **70**: 51–71.
- Calvo GA. 1983. Staggered prices in a utility-maximizing framework. *Journal of Monetary Economics* **12**: 383–398.
- Cesa-Bianchi A. 2013. Housing cycles and macroeconomic fluctuations: A global perspective. *Journal of International Money and Finance* **37**: 215–238.
- Cesa-Bianchi A, Cespedes LF, Rebucci A. 2015. Global liquidity, house prices, and the macroeconomy: Evidence from advanced and emerging economies. *Journal of Money, Credit and Banking* **47**: 301–335.
- Chang T, Simo-Kengne BD, Gupta R, et al. 2013. The causal relationship between house prices and economic growth in the nine provinces of South Africa: Evidence from panel-Granger causality tests. *International Journal of Sustainable Economy* **6**: 345–358.

- Das S, Gupta R, Kanda P. 2011. International articles: Bubbles in South African house prices and their impact on consumption. *Journal of Real Estate Literature* **19**: 69–91.
- Davis MA, Heathcote J. 2005. Housing and the business cycle. *International Economic Review* **46**: 751–784.
- Farmer RE, Khramov V, Nicolò G. 2015. Solving and estimating indeterminate DSGE models. *Journal of Economic Dynamics and Control* **54**: 17–36.
- Finocchiaro D, Queijo von Heideken V. 2009. Do central banks react to house prices? *Riksbank Research Paper* .
- Funke M, Paetz M. 2013. Housing prices and the business cycle: An empirical application to Hong Kong. *Journal of Housing Economics* **22**: 62–76.
- Funke M, Paetz M, Pytlarczyk E. 2011. Stock market wealth effects in an estimated DSGE model for Hong Kong. *Economic Modelling* **28**: 316–334.
- Gali J, Monacelli T. 2005. Monetary policy and exchange rate volatility in a small open economy. *The Review of Economic Studies* **72**: 707–734.
- Giannoni MP, Woodford M. 2003. How forward-looking is optimal monetary policy? *Journal of Money, Credit and Banking* : 1425–1469.
- Gupta R, Jurgilas M, Kabundi A. 2010. The effect of monetary policy on real house price growth in South Africa: A factor-augmented vector autoregression (FAVAR) approach. *Economic modelling* **27**: 315–323.
- Hirata H, Kose MA, Otrok C, Terrones ME. 2013. Global house price fluctuations: Synchronization and determinants. *NBER International Seminar on Macroeconomics, University of Chicago Press* **9**: 119 – 166.
- Iacoviello M. 2005. House prices, borrowing constraints, and monetary policy in the business cycle. *American Economic Review* **95**: 739–764.
- Iacoviello M. 2010. *Housing in DSGE Models: Findings and New Directions*. Springer.
- Iacoviello M, Neri S. 2010. Housing market spillovers: Evidence from an estimated DSGE model. *American Economic Journal: Macroeconomics* **2**: 125–164.

- Inglesi-Lotz R, Gupta R. 2013. The long-run relationship between house prices and inflation in South Africa: an ARDL approach. *International Journal of Strategic Property Management* **17**: 188–198.
- Lubik TA, Schorfheide F. 2004. Testing for indeterminacy: An application to US monetary policy. *American Economic Review* : 190–217.
- Lucas RE. 1976. Econometric policy evaluation: A critique. In *Carnegie-Rochester conference series on public policy*, volume 1. Elsevier, 19–46.
- Ndahiriwe K, Gupta R. 2010. Financial liberalization and the effectiveness of monetary policy on house prices in South Africa. *ICFAI Journal of Monetary Economics* **8**: 59–74.
- Nyakabawo W, Miller SM, Balcilar M, Das S, Gupta R. 2015. Temporal causality between house prices and output in the US: A bootstrap rolling-window approach. *The North American Journal of Economics and Finance* **33**: 55–73.
- Paetz M, Gupta R. Forthcoming. Stock price dynamics and the business cycle in an estimated DSGE model for South Africa. *Journal of International Financial Markets, Institutions and Money* .
- Pariès MD, Notarpietro A. 2008. *Monetary policy and housing prices in an estimated DSGE model for the US and the euro area*. European Central Bank.
- Peretti V, Gupta R, Inglesi-Lotz R. 2012. Do house prices impact consumption and interest rate in South Africa? evidence from a time-varying vector autoregressive model. *Economics, Management and Financial Markets* **7**: 101–120.
- Simo-Kengne B, Bittencourt M, Gupta R. 2012. House prices and economic growth in South Africa: Evidence from provincial-level data. *Journal of Real Estate Literature* **20**: 97–117.
- Simo-Kengne B, Gupta R, Aye G. 2014. Macro shocks and house prices in South Africa. *Journal of Real Estate Literature* **20**: 179–193.
- Simo-Kengne BD, Balcilar M, Gupta R, Reid M, Aye GC. 2013a. Is the relationship between monetary policy and house prices asymmetric across bull and bear markets in South Africa? evidence from a markov-switching vector autoregressive model. *Economic Modelling* **32**: 161–171.

- Simo-Kengne BD, Gupta R, Aye GC. 2015. House prices and balance of trade dynamics in South Africa: evidence from an agnostic identification procedure. *Journal of Housing Research* **24**: 107–126.
- Simo-Kengne BD, Gupta R, Bittencourt M. 2013b. The impact of house prices on consumption in South Africa: evidence from provincial-level panel VARs. *Housing Studies* **28**: 1133–1154.
- Smets F, Wouters R. 2003. An estimated dynamic stochastic general equilibrium model of the euro area. *Journal of the European Economic Association* **1**: 1123–1175.
- Sun X, Tsang KP. 2014. Optimal interest rate rule in a DSGE model with housing market spillovers. *Economics Letters* **125**: 47–51.